

SURE-SEAL[®] IP67 HDMI SERIES CATALOG



Table of Contents

- Technical Information** 4

- How to Order**
 - HDMI Cable Assemblies..... 5
 - HDMI Receptacles 5

- HDMI Cable Assemblies**
 - HDMI Cable Assembly Molded Plug to HDMI Plug 6
 - HDMI Cable Assembly Molded Plug to Molded Plug 6
 - HDMI Cable Assembly Molded Receptacle to HDMI Plug 7

- HDMI Receptacles**
 - HDMI Molded Receptacle to Flying Leads..... 7
 - HDMI Molded Receptacle Feed Thru..... 8
 - HDMI Molded Receptacle to PC Tails 8

- HDMI Accessories**
 - HDMI Receptacle Cap..... 9

Technical Information

Wire Gauge Conversion Chart

Conversion between American Wire Gauge (AWG), Circular Mil Area (CMA), and approximate metric millimeter squared (mm²) wire sizes.

Diameter			Area	
AWG	in.	mm	CMA	mm ^{2*}
4/0 (0000)	0.46	11.68	212000	120
3/0 (000)	0.41	10.41	168000	95
2/0 (00)	0.365	9.27	133000	70
1/0 (0)	0.325	8.26	106000	50
1	0.289	7.34	83700	-
2	0.258	6.55	66400	35
3	0.229	5.82	52600	-
4	0.204	5.18	41700	25
5	0.182	4.62	33100	-
6	0.162	4.11	26300	16
7	0.144	3.66	20800	-
8	0.128	3.25	16500	10
9	0.114	2.90	13100	-
10	0.102	2.59	10400	6
11	0.091	2.31	8230	-
12	0.081	2.06	6530	4
13	0.072	1.83	5180	-

Diameter			Area	
AWG	in.	mm	CMA	mm ^{2*}
14	0.062	1.57	4110	2.5
15	0.057	1.45	3260	-
16	0.051	1.30	2580	1.5
17	0.045	1.14	2050	1
18	0.040	1.02	1620	0.75
19	0.036	0.91	1290	-
20	0.032	0.81	1020	0.5
21	0.0285	0.72	810	-
22	0.0253	0.643	642	0.34
23	0.0226	0.574	509	-
24	0.0201	0.511	404	0.25
25	0.0179	0.45	320	-
26	0.0159	0.404	254	0.14
27	0.0142	0.361	202	-
28	0.0126	0.320	160	0.08
29	0.0113	0.29	127	-
30	0.01	0.254	101	0.05

*Nearest metric wire size
Use to Convert American Wire Gauge to Diameter and Circular Mil Area.

How to Order

HDMI Cable Assemblies

1		2		3
IPHDM	-	WPP	-	1M
SERIES		CONNECTOR STYLE		LENGTH

SERIES

IPHDM = HDMI

CONNECTOR STYLE

WPP = Molded Plug to HDMI Plug
 WPWP = Molded Plug to Molded Plug
 WJP = Molded Receptacle to HDMI Plug

LENGTH*

1M - 1 Meter
 2M - 2 Meter
 3M - 3 Meter

*Additional lengths are available upon request

HDMI Receptacles

1		2
IPHDM	-	FPC
SERIES		CONNECTOR STYLE

SERIES

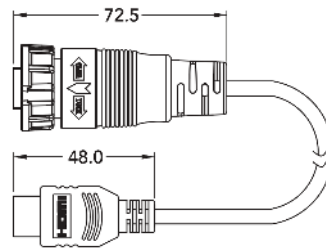
IPHDM = HDMI

CONNECTOR STYLE

FL = Molded Receptacle to 500 mm flying leads
 FBHD = HDMI Feed Thru
 FPC = Molded Receptacle to PC Tails

HDMI Cable Assembly Molded Plug to HDMI Plug

Connector series: HDMI
 Gender: Male
 Part No.: IPHDM-WPP-#M
 # refers to cable length

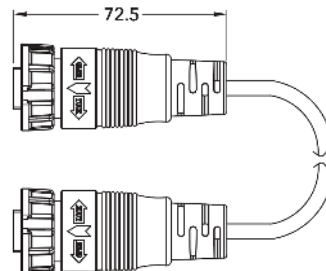


General Information

Connector type:	HDMI A type	Withstanding voltage:	AC 300V/1 minute
Temperature range:	-20°C ~ +80°C	Salt spray:	48 hr.
Terminal:	Copper alloy, gold plated	Protection class:	IP67 (unmated)
Shell / screw nut:	Nylon + GF	Durability:	1000 times
Mating style:	Bayonet	Current rating:	0.5A
Contact resistance:	≤ 20MΩ	Voltage rating:	30V

HDMI Cable Assembly Molded Plug to Molded Plug

Connector series: HDMI
 Gender: Male
 Part No.: IPHDM-WPWP-#M
 # refers to cable length



General Information

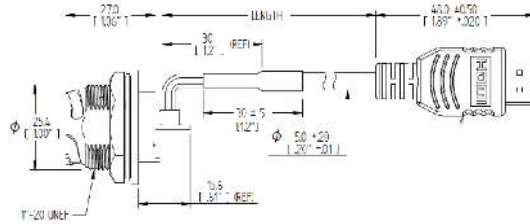
Connector type:	HDMI A type	Withstanding voltage:	AC 300V/1 minute
Temperature range:	-20°C ~ +80°C	Salt spray:	48 hr.
Terminal:	Copper alloy, gold plated	Protection class:	IP67 (unmated)
Shell / screw nut:	Nylon + GF	Durability:	1000 times
Mating style:	Bayonet	Current rating:	0.5A
Contact resistance:	≤ 20MΩ	Voltage rating:	30V

Notes

- Please refer to Page 4 for the Conversion between American Wire Gauge AWG and Wire Cross-section mm²
- Please refer to Page 5 for part number breakdown.

HDMI Cable Assembly Receptacle to HDMI Plug

Connector series: HDMI
Gender: Female
Part No.: IPHDM-WJP-#M
refers to cable length

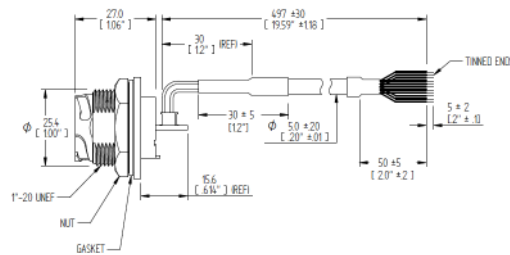


General Information

Connector type:	HDMI A type	Withstanding voltage:	AC 300V/1 minute
Temperature range:	-20°C ~ +80°C	Salt spray:	48 hr.
Terminal:	Copper alloy, gold plated	Protection class:	IP67 (unmated)
Shell / screw nut:	Nylon + GF	Durability:	1000 times
Mating style:	Bayonet	Current rating:	0.5A
Max panel thickness:	4.5 mm ² (without cap chain)	Voltage rating:	30V
Contact resistance:	≤ 20MΩ		

HDMI Molded Receptacle to Flying Leads

Connector series: HDMI
Gender: Female
Part No.: IPHDM-FL
refers to cable length



General Information

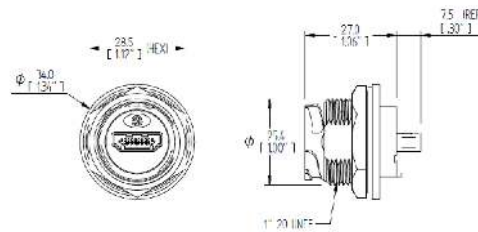
Connector type:	HDMI A type	Withstanding voltage:	AC 300V/1 minute
Temperature range:	-20°C ~ +80°C	Salt spray:	48 hr.
Terminal:	Copper alloy, gold plated	Protection class:	IP67 (unmated)
Shell / screw nut:	Nylon + GF	Durability:	1000 times
Mating style:	Bayonet	Current rating:	0.5A
Max panel thickness:	4.5 mm ² (without cap chain)	Voltage rating:	30V
Contact resistance:	≤ 20MΩ	Cable length:	500 mm

Notes

- Please refer to Page 4 for the Conversion between American Wire Gauge AWG and Wire Cross-section mm²
- Please refer to Page 5 for part number breakdown.

HDMI Receptacle Feed Thru

Connector series: HDMI
 Gender: Female
 Part No.: IPHDM-FBHD

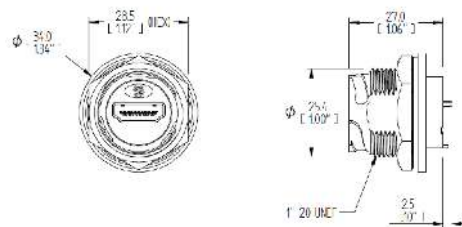


General Information

Connector type:	HDMI A type	Withstanding voltage:	AC 300V/1 minute
Temperature range:	-40°C ~ +105°C	Salt spray:	48 hr.
Terminal:	Copper alloy, gold plated	Protection class:	IP67 (unmated)
Shell / screw nut:	Nylon + GF	Durability:	1000 times
Mating style:	Bayonet	Current rating:	0.5A
Max panel thickness:	4.5 mm ² (without cap chain)	Voltage rating:	30V
Contact resistance:	≤ 20MΩ		

HDMI Receptacle to PC Tails

Connector series: HDMI
 Gender: Female
 Part No.: IPHDM-FPC



General Information

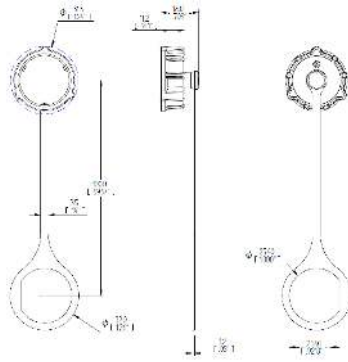
Connector type:	HDMI A type	Withstanding voltage:	AC 300V/1 minute
Temperature range:	-40°C ~ +105°C	Salt spray:	48 hr.
Terminal:	Copper alloy, gold plated	Protection class:	IP67 (unmated)
Shell / screw nut:	Nylon + GF	Durability:	1000 times
Mating style:	Bayonet	Current rating:	0.5A
Max panel thickness:	4.5 mm ² (without cap chain)	Voltage rating:	30V
Contact resistance:	≤ 20MΩ		

Notes

- Please refer to Page 4 for the Conversion between American Wire Gauge AWG and Wire Cross-section mm²
- Please refer to Page 5 for part number breakdown.

HDMI Receptacle Cap

Connector series: HDMI
Locking type: Bayonet
Part No.: IPCAP-3PT



General Information

Temperature range: -40°C ~ +105°C

Material, cap: Nylon, black

Material, holder: Nylon, black

Protection class: IP67

Material, gasket: EPDM, black

Material, chain: EPDM, black

Part Numbers

All HDMI Series P/Ns	Catalog Page
IPHDM-WPP-1M	6
IPHDM-WPP-2M	6
IPHDM-WPP-3M	6
IPHDM-WPWP-1M	6
IPHDM-WPWP-2M	6
IPHDM-WPWP-3M	6
IPHDM-WJP-1M	7
IPHDM-WJP-2M	7
IPHDM-WJP-3M	7
IPHDM-FL	7
IPHDM-FBHD	8
IPHDM-FPC	8
IPCAP-3PT	9



Corporate Headquarters, Philadelphia, PA



European Headquarters & Production Facility, Southampton, UK



Production Facility, Zhuhai, China



North American Production Facility, South Bend, IN



FilConn, Chandler, AZ



PEI-Genesis has sales offices throughout the Americas, Europe and Asia.
Visit www.peigenesis.com, call +1 800.675.1214 (North America), +44 (0) 23 8062 1260 (Europe),
+86 756 7683 088 (Asia), +1 631.475.5050 (Rest of World), or email: sales@peigenesis.com.

www.peigenesis.com | www.peigenesis.cn

