

NOTE:

- MATERIAL AND FINISH
SHELL ASSEMBLY: COPPER ALLOY, OUTER SHELL AND COLLECT NUT Cr PLATING, OTHER METALLIC COMPONENTS Ni PLATING.
INSULATOR: PEEK
CONTACT: COPPER ALLOY, GOLD PLATING OVER Ni.
- DURABILITY: 5000 CYCLES
- PROTECTION INDEX(MATED): IP66/IP68, IP68 ACHIEVED PROVIDING THAT THE CABLE IS PERFECTLY CIRCULAR AND THAT ASSEMBLY PROCESS ENSURES A HIGH INTEGRITY SEAL.
- HUMIDITY: UP TO 95% AT 60°C
- TEMPERATURE: -55°C,+200°C
- ROHS COMPLIANCE.
- PART NO.:

R - F 0 K S * * 0 * C 1 0 * *

CONTACT POS.
02-09=2pin-09pin

SHELL MATERIAL
0=Brass

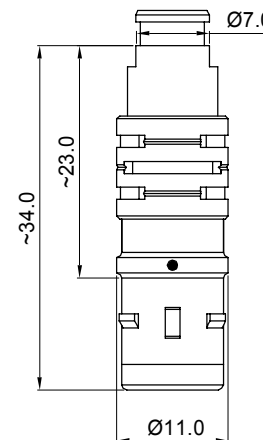
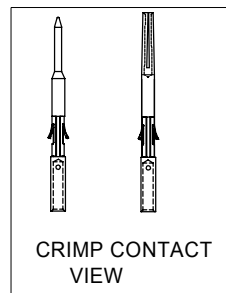
CODE	CONTACT TYPE
2	Male Solder Contact
4	Female Solder Contact
C	Crimp Male Contact
M	Crimp Female Contact

COLLET NUT
1=Nut for fitting a bend relief

CODE	KEY ANGLES
0	0°
A	30°
*	**

CODE	KEY ANGLES
0	0°
A	30°
*	**

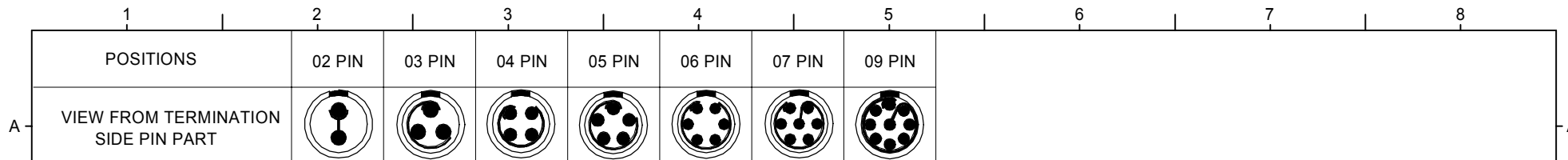
CODE	KEY ANGLES
0	0°
A	30°
*	**



REV.	DESCRIPTION	DATE
A1	UPDATE FRAME	11/11'19
A	ECN-160053	7/05'16

UNITS:	SIZE	NAME:	nexttron NEXTRONICS ENGINEERING CORP.
■ mm □ inch	A3	SNAP LATCH METAL 0K PLUG	
GENERAL TOLERANCE: (UNLESS SPECIFIED)		PART NO: R-F0KS**0*C1***	TITLE: CUSTOMER DWG.
4 PLACE	mm ± ** inch ± **	APPD: Alex 梁良駒 2019/11/19	DWG NO: 010-0000-B85
3 PLACE	mm ± 0.1 inch ± **	CHKD: Ken 張永 2019/11/19	C
2 PLACE	mm ± 0.3 inch ± **	DRAW: Ellen 孫郁婷 2019/11/15	
1 PLACE	mm ± 0.5 inch ± **	DESIGN: Cayley 梁思雅 2019/11/12	
ANGLES	X° ± 2°		SCALE SHEET REV. 2/1 1/3 A1

CONFIDENTIAL: THIS DOCUMENT CONTAINED THE INFORMATION IS PROPRIETARY AND CONFIDENTIAL TO Nextronics Engineering Corp. NO PERSON IS ALLOWED TO USE COPY, PUBLISH OR OTHERWISE DISCLOSE THE INFORMATION TO OTHERS, UNLESS BY THE PRIOR WRITTEN EXPRESS AUTHORIZATION OF Nextronics Engineering Corp. (C)COPYRIGHT- Nextronics Engineering Corp.

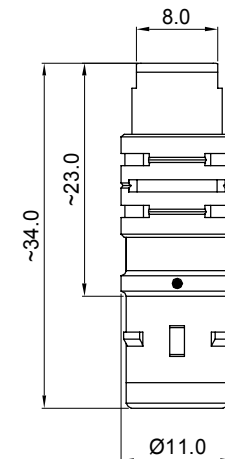
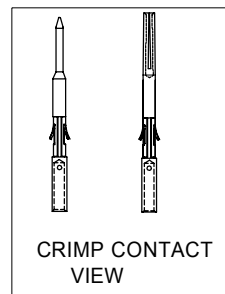


NOTE:

- MATERIAL AND FINISH
SHELL ASSEMBLY: COPPER ALLOY, OUTER SHELL AND COLLECT NUT Cr PLATING, OTHER METALLIC COMPONENTS Ni PLATING.
INSULATOR: PEEK
CONTACT: COPPER ALLOY, GOLD PLATING OVER Ni.
- DURABILITY: 5000 CYCLES
- PROTECTION INDEX(MATED): IP66/IP68, IP68 ACHIEVED PROVIDING THAT THE CABLE IS PERFECTLY CIRCULAR AND THAT ASSEMBLY PROCESS ENSURES A HIGH INTEGRITY SEAL.
- HUMIDITY: UP TO 95% AT 60°C
- TEMPERATURE: -55°C,+200°C
- ROHS COMPLIANCE.
- PART NO.:

R - F 0 K S * * 0 * C 2 0 **

CONTACT POS. 02-09=2pin-09pin	CABLE OD
SHELL MATERIAL 0=Brass	10=OD: 1.0mm-1.2mm
CODE CONTACT TYPE	15=OD: 1.3mm-1.5mm
2 Male Solder Contact	20=OD: 1.6mm-2.0mm
4 Female Solder Contact	25=OD: 2.1mm-2.5mm
C Crimp Male Contact	30=OD: 2.6mm-3.0mm
M Crimp Female Contact	35=OD: 3.1mm-3.5mm
COLLET NUT	40=OD: 3.6mm-4.0mm
2=Nut for Standard	45=OD: 4.1mm-4.5mm
	50=OD: 4.6mm-5.0mm
	CODE KEY ANGLES
	0 0°
	A 30°
	* **

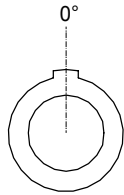


A1	UPDATE FRAME	11/11'19
A	ECN-160053	7/05'16
REV.	DESCRIPTION	DATE

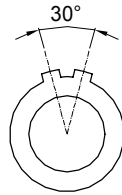
UNITS: ■ mm □ inch	SIZE A3	NAME: SNAP LATCH METAL 0K PLUG	nexttron® NEXTRONICS ENGINEERING CORP.	
GENERAL TOLERANCE: (UNLESS SPECIFIED)		PART NO: R-F0KS**0*C2***	TITLE: CUSTOMER DWG.	
4 PLACE	mm ± **	inch ± **	APPD: Alex梁良駒 2019/11/19	DWG NO: 010-0000-B85
3 PLACE	mm ± 0.1	inch ± **	CHKD: Ken張永 2019/11/19	C
2 PLACE	mm ± 0.3	inch ± **	DRAW: Ellen孫郁婷 2019/11/15	
1 PLACE	mm ± 0.5	inch ± **	DESIGN: Cayley梁思雅 2019/11/12	
ANGLES	X° ± 2°		SCALE 2/1	SHEET 2/3
			REV. A1	

CONFIDENTIAL: THIS DOCUMENT CONTAINED THE INFORMATION IS PROPRIETARY AND CONFIDENTIAL TO Nextronics Engineering Corp. NO PERSON IS ALLOWED TO USE COPY, PUBLISH OR OTHERWISE DISCLOSE THE INFORMATION TO OTHERS, UNLESS BY THE PRIOR WRITTEN EXPRESS AUTHORIZATION OF Nextronics Engineering Corp. (C)COPYRIGHT- Nextronics Engineering Corp.

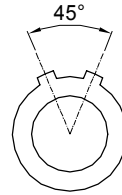
KEY ANGLES (PLUG FRONT VIEW):



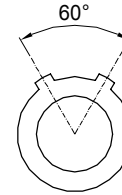
0



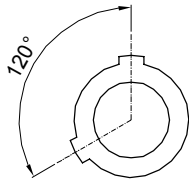
A



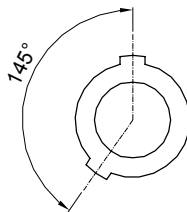
D



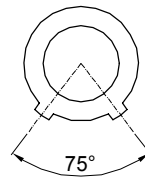
B



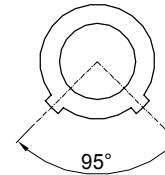
K



U



H



C



A1	UPDATE FRAME	11/11'19
A	ECN-160053	7/05'16
REV.	DESCRIPTION	DATE

UNITS: ■ mm □ inch	SIZE A3	NAME: SNAP LATCH METAL OK PLUG	nexttron [®] NEXTRONICS ENGINEERING CORP.		
GENERAL TOLERANCE: (UNLESS SPECIFIED)		PART NO: R-FOKS**0*C****	TITLE: CUSTOMER DWG.		
4 PLACE	mm ± **	inch ±. **	APPD: Alex 梁良駒	2019/11/19	DWG NO: 010-0000-B85
3 PLACE	± 0.1	±. **	CHKD: Ken 張永	2019/11/19	
2 PLACE	± 0.3	±. **	DRAW: Ellen 孫郁婷	2019/11/15	SCALE SHEET REV. 2.5/1 3/3 A1
1 PLACE	± 0.5	±. **	DESIGN: Cayley 梁思雅	2019/11/12	
ANGLES	X° ± 2°				

CONFIDENTIAL: THIS DOCUMENT CONTAINED THE INFORMATION IS PROPRIETARY AND CONFIDENTIAL TO Nexttronics Engineering Corp. NO PERSON IS ALLOWED TO USE COPY, PUBLISH OR OTHERWISE DISCLOSE THE INFORMATION TO OTHERS, UNLESS BY THE PRIOR WRITTEN EXPRESS AUTHORIZATION OF Nexttronics Engineering Corp. (C)COPYRIGHT- Nexttronics Engineering Corp.