

| PART NUMBER | REV | TERMINATOR | FEED TYPE | DESCRIPTION |
|-------------|-----|------------|----------------|--------------------|
| 1528781-1 | A | LEADMAKER | MECH POST FEED | CUTS CARRIER |
| 1528781-2 | A | BENCH | MECH PRE FEED | CUTS CARRIER |
| 1528781-6 | A | LEADMAKER | MECH POST FEED | CONTINUOUS CARRIER |
| 7-1528781-1 | A | LEADMAKER | MECH POST FEED | -1 AND SPARE PARTS |
| 7-1528781-2 | A | BENCH | MECH PRE FEED | -2 AND SPARE PARTS |
| 7-1528781-6 | A | LEADMAKER | MECH POST FEED | -6 AND SPARE PARTS |
| 7-1528781-7 | A | - | - | SPARE PARTS KIT |

| CRIMP | SIZE | TYPE | RANGE |
|-------|-----------------|------|----------------------------|
| WIRE | 2.36 [1.093 IN] | F | 2.00mm ² |
| INSUL | 2.79 [1.110 IN] | F | 2.60-2.70 [1.102-1.106 IN] |

| WIRE STRIP LENGTH | APPL INSTRUCTIONS |
|--------------------------|---------------------|
| 5.00-5.50 [1.97-.217 IN] | 408-8322 & 408-8490 |

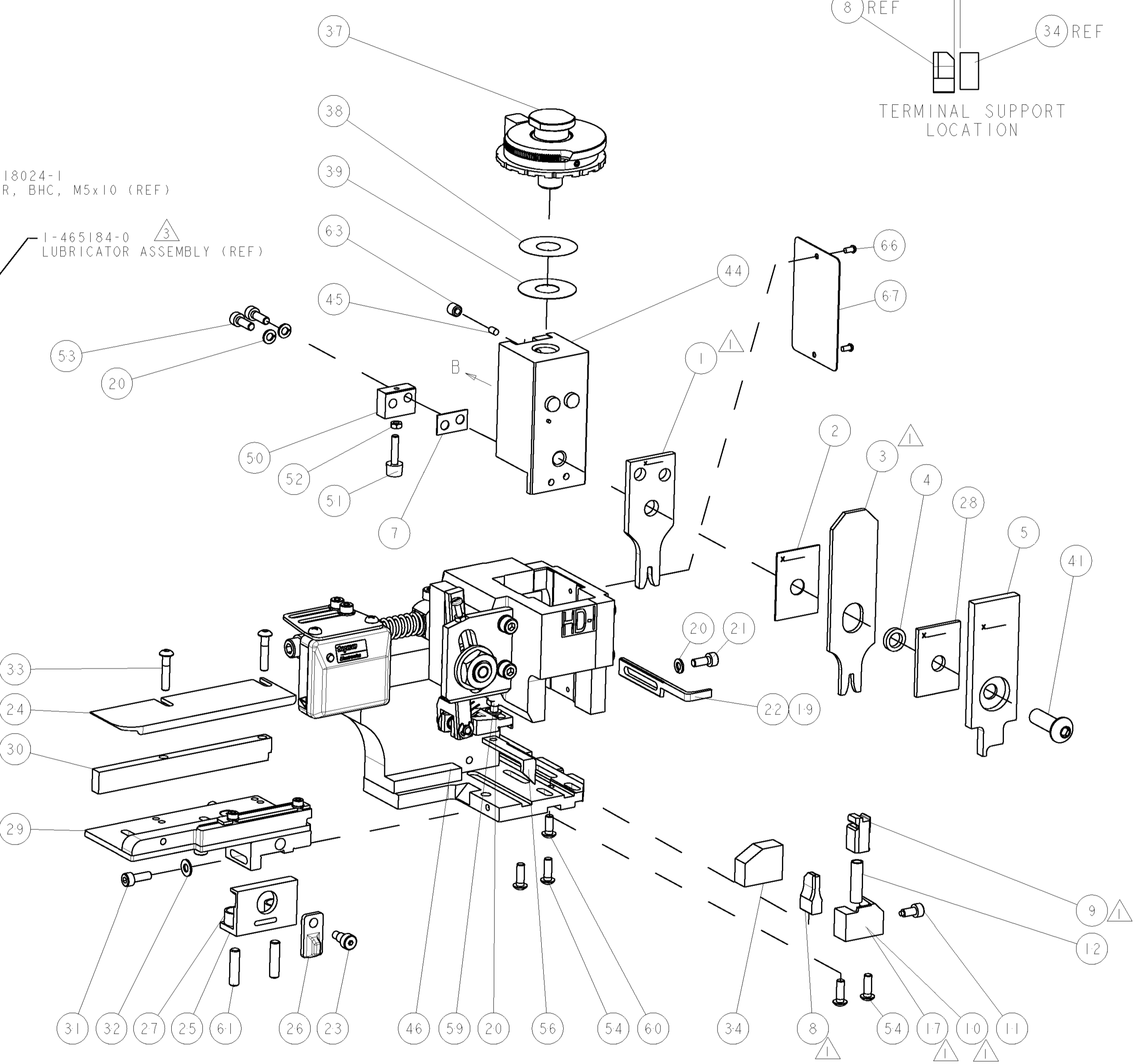
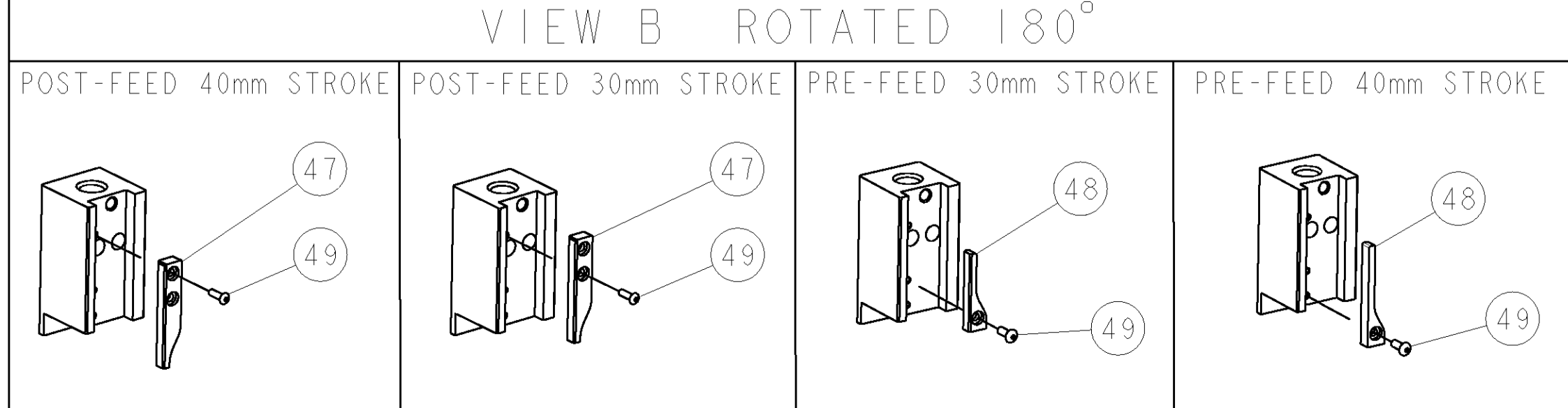
| TERMINAL SEWS DATA SHT | FEED |
|------------------------|------------------|
| APPL SPEC 8240-4942 | 12.57 [1.495 IN] |

| TYCO TERM PN | MANUF TERM PN |
|--------------|---------------|
| 1949307-1 | 8240-4942 |

| WIRE SIZE | CRIMP HEIGHT | REF SETTING |
|---|-------------------------------|-------------|
| 2.00mm ² | 1.70 ± 0.05 [1.067 ± .002 IN] | C 6 |
| 1.00mm ² + 1.00mm ² | 1.70 ± 0.05 [1.067 ± .002 IN] | C 6 |
| 0.75mm ² + 0.75mm ² | 1.55 ± 0.05 [1.061 ± .002 IN] | D 8 |

- 1. RECOMMENDED SPARE PARTS.
- 2. GREASE RAM, CAM, CAM FOLLOWER AND FEED ROD LIGHTLY.
- 3. CERTAIN TERMINALS REQUIRE LUBRICATION. REFER TO THE APPLICATOR INSTRUCTION SHEET FOR MORE INFORMATION.
- 4. LUBRICATE DAILY PER THE APPLICATOR INSTRUCTION SHEET SUPPLIED WITH THE APPLICATOR.
- 5. ALL CRIMP DATA SUPPLIED BY THE TERMINAL MANUFACTURER.
- 6. APPLICATOR DESIGNED TO APPLY AVSS INSULATION TYPE.
- 7. CRIMP HEIGHTS CALCULATED BY TYCO ELECTRONICS UK, BASED ON TERMINAL MANUFACTURER'S CRIMP WIDTH.
- 8. WIRE & INSULATION RANGES SHOWN ARE TERMINAL RANGES. INS. RANGE FOR DOUBLE WIRE APPLICATION IS:- 2 X 2.00mm DIAMETER MAX.

*** WARNING**
ON INSTALLATION, SET WIRE DISC TO LARGEST WIRE SIZE SETTING. USE OF SETTINGS BELOW MIN. REQUIRED CRIMP HEIGHT SETTING WILL CAUSE DAMAGE TO CRIMP TOOLING.



| REV | DATE | BY | CHKD | DESCRIPTION |
|-----|-----------|-----|------|-------------------|
| 1 | 24APR2007 | LJL | MC | SEE ECO-07-009622 |

| REV | DATE | BY | CHKD | DESCRIPTION | ITEM NO | | |
|-----|------|----|------|-------------|-------------|---------------------------------|----|
| - | - | - | - | - | 73 | | |
| - | - | - | - | - | 72 | | |
| - | 1 | 1 | 1 | 1 | 1338705-3 | DOCUMENTATION PACKAGE | 71 |
| - | - | - | - | - | - | 70 | |
| - | - | - | - | - | - | 69 | |
| - | - | - | - | - | - | 68 | |
| - | 1 | 1 | 1 | 1 | 461264-5 | PLATE, IDENTIFICATION | 67 |
| - | 2 | 2 | 2 | 2 | 21017-2 | SCREW, DRIVE | 66 |
| - | - | - | - | - | - | 65 | |
| - | - | - | - | - | - | 64 | |
| - | 1 | 1 | 1 | 1 | 3-18031-0 | SCR, SET, CUP POINT M6 X 6.0 | 63 |
| - | - | - | - | - | - | 62 | |
| - | 2 | 2 | 2 | 2 | 2-18032-5 | SCR, SET, FLT POINT M5 X 20.0 | 61 |
| - | 1 | 1 | 1 | 1 | 18024-7 | SCR, BTN SKT HD CAP (M4 X 10.0) | 60 |
| - | 1 | 1 | 1 | 1 | 5-18022-2 | SCR, HEX HD CAP M4 X 8.0 | 59 |
| - | - | - | - | - | - | 58 | |
| - | - | - | - | - | - | 57 | |
| - | 1 | 1 | 1 | 1 | 1338685-1 | PAWL, FEED | 56 |
| - | - | - | - | - | - | 55 | |
| - | 4 | 4 | 4 | 4 | 18024-8 | SCR, BTN SKT HD CAP (M4 X 12.0) | 54 |
| - | 2 | 2 | 2 | 2 | 1-18023-2 | SCR, SKT HD CAP M4 X 12.0 | 53 |
| - | 1 | 1 | 1 | 1 | 18030-1 | NUT, HEX, REG M3 | 52 |
| - | 1 | 1 | 1 | 1 | 811242-5 | BUMPER, HOLD DOWN | 51 |
| - | 1 | 1 | 1 | 1 | 690753-2 | SPACER, TONKER | 50 |
| - | 1 | 1 | 1 | 1 | 18024-3 | SCR, BTN SKT HD CAP (M3 X 10.0) | 49 |
| - | 1 | 1 | 1 | 1 | 1338675-1 | CAM, UNIVERSAL PRE FEED | 48 |
| - | 1 | 1 | 1 | 1 | 1338676-1 | CAM, UNIVERSAL POST-FEED | 47 |
| - | 1 | 1 | 1 | 1 | 1320999-3 | APPLICATOR SUBASSEMBLY, HDI | 46 |
| - | 1 | 1 | 1 | 1 | 690191-1 | PLUG, NYLON | 45 |
| - | 1 | 1 | 1 | 1 | 1338660-1 | RAM | 44 |
| - | - | - | - | - | - | 43 | |
| - | - | - | - | - | - | 42 | |
| - | 1 | 1 | 1 | 1 | 2-18024-6 | SCR, BTN SKT HD CAP (M8 X 25.0) | 41 |
| - | - | - | - | - | - | 40 | |
| - | 1 | 1 | 1 | 1 | 690125-1 | SHIM SUB-ASSY | 39 |
| - | 1 | 1 | 1 | 1 | 469367-4 | SHIM | 38 |
| - | 1 | 1 | 1 | 1 | 879103-2 | FINE ADJUST HEAD ASSEMBLY | 37 |
| - | - | - | - | - | - | 36 | |
| - | - | - | - | - | - | 35 | |
| - | 1 | 1 | 1 | 1 | 1320934-1 | SUPPORT, TERMINAL | 34 |
| - | 2 | 2 | 2 | 2 | 1-18024-0 | SCR, BTN SKT HD CAP (M4 X 20.0) | 33 |
| - | 1 | 1 | 1 | 1 | 18027-2 | WASHER, FLAT, REG M4 | 32 |
| - | 1 | 1 | 1 | 1 | 1-18023-2 | SCR, SKT HD CAP M4 X 12.0 | 31 |
| - | 1 | 1 | 1 | 1 | 1-1320908-5 | SPACER, STRIP GUIDE | 30 |
| - | 1 | 1 | 1 | 1 | 1633073-1 | STRIP GUIDE ASSEMBLY | 29 |
| - | 1 | 1 | 1 | 1 | 2-455888-2 | SPACER, CRIMPER | 28 |
| - | 2 | 2 | 2 | 2 | 1-22284-0 | SPRING, COMPRESSION | 27 |
| - | 1 | 1 | 1 | 1 | 356835-1 | LEVER, DRAG RELEASE | 26 |
| - | 1 | 1 | 1 | 1 | 240792-1 | DRAG, TERMINAL | 25 |
| - | 1 | 1 | 1 | 1 | 1320928-1 | PLATE, STRIP GUIDE | 24 |
| - | 1 | 1 | 1 | 1 | 980371-4 | SCR, SKT HD SHLDR 5.0 DIA X 6.0 | 23 |
| - | 1 | 1 | 1 | 1 | 690472-2 | STRIPPER | 22 |
| - | 1 | 1 | 1 | 1 | 1-18023-1 | SCR, SKT HD CAP M4 X 10.0 | 21 |
| - | 4 | 4 | 4 | 4 | 18025-2 | WASHER, SPRG LOCK, REG M4 | 20 |
| - | 1 | 1 | 1 | 1 | 690472-1 | STRIPPER | 19 |
| - | - | - | - | - | - | 18 | |
| - | 1 | 1 | 1 | 1 | 1338684-1 | SHEAR HOLDER, FRONT | 17 |
| - | - | - | - | - | - | 16 | |
| - | - | - | - | - | - | 15 | |
| - | - | - | - | - | - | 14 | |
| - | - | - | - | - | - | 13 | |
| - | 1 | 1 | 1 | 1 | 3-22280-3 | SPRING, COMPRESSION | 12 |
| - | 1 | 1 | 1 | 1 | 356885-4 | STOP, SHEAR | 11 |
| - | 1 | 1 | 1 | 1 | 1320921-1 | SHEAR HOLDER, FRONT, CUT | 10 |
| - | 1 | 1 | 1 | 1 | 454276-1 | FLOATING SHEAR, FRONT | 9 |
| 1 | 2 | 2 | 2 | 2 | 3-1633139-6 | ANVIL, COMBINATION | 8 |
| - | 1 | 1 | 1 | 1 | 2-240641-1 | SPACER | 7 |
| - | - | - | - | - | - | 6 | |
| - | 1 | 1 | 1 | 1 | 2-455889-0 | DEPRESSOR, SHEAR | 5 |
| - | 1 | 1 | 1 | 1 | 238011-4 | BLOCK, CRIMPER SPACER | 4 |
| 1 | 2 | 2 | 2 | 2 | 6-456134-5 | CRIMPER, INSULATION F PREMIUM | 3 |
| - | 1 | 1 | 1 | 1 | 455888-6 | SPACER, CRIMPER | 2 |
| 1 | 2 | 2 | 2 | 2 | 6-1673600-3 | CRIMPER, WIRE | 1 |

| REV | DATE | BY | CHKD | DESCRIPTION | ITEM NO |
|-----|------|----|------|-------------|---------|
| - | - | - | - | - | 84 |
| - | - | - | - | - | 83 |
| - | - | - | - | - | 82 |
| - | - | - | - | - | 81 |
| - | - | - | - | - | 80 |
| - | - | - | - | - | 79 |
| - | - | - | - | - | 78 |
| - | - | - | - | - | 77 |
| - | - | - | - | - | 76 |
| - | - | - | - | - | 75 |
| - | - | - | - | - | 74 |