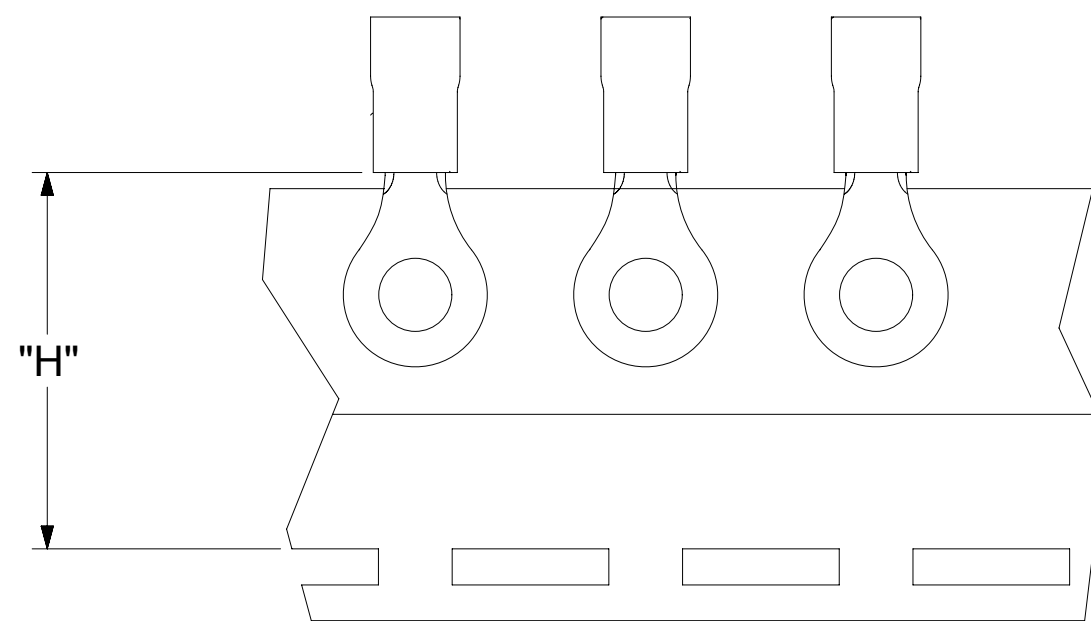
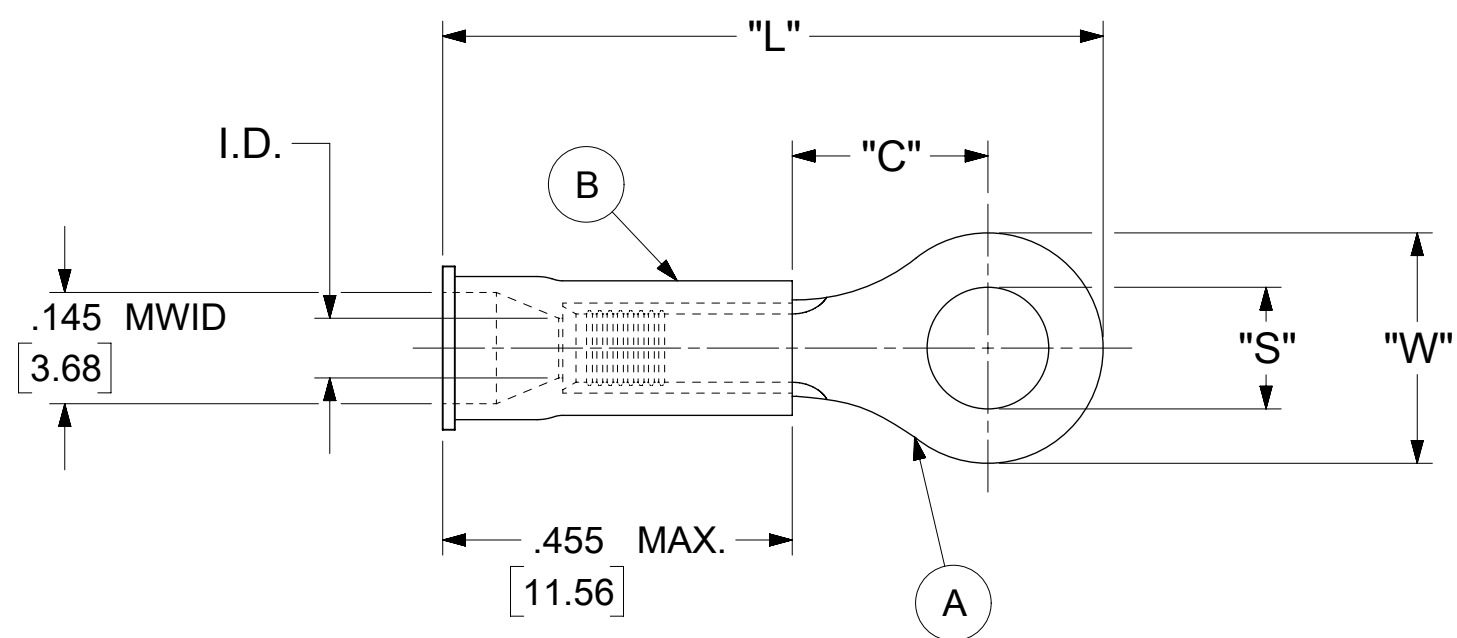


LOOSE PIECE		TAPE MOUNTED		SPECIFICATIONS							
MATERIAL NUMBER	ENGINEERING NUMBER	MATERIAL NUMBER	ENGINEERING NUMBER	STUD SIZE	"S" ±.005 [0.13]	"W" ±.010 [0.25]	"C" MIN.	"L" MAX.	"I.D." MIN.	"H"	STOCK ±.001 [0.025] THICKNESS
190540032	A-220-04X	---	---	4	.119 [3.02]	.225 [5.71]	.157 [3.99]	.759 [19.28]	.062 [1.57]	.98 [24.89]	.028 [0.71]
190540033	A-220-06X	---	---	6	.146 [3.71]						
190540035	A-221-06X	---	---	6	.146 [3.71]	.312 [7.92]	.270 [6.86]	.946 [23.26]	.062 [1.57]	.98 [24.89]	.028 [0.71]
190540037	A-221-08X	190540038	A-221-08XT	8	.173 [4.39]						
190540039	A-221-10X	190540040	A-221-10XT	10	.198 [5.03]						
190540042	A-222-14X	---	---	14	.265 [6.73]	.467 [11.86]	.386 [9.80]	1.110 [28.19]	.062 [1.57]	.98 [24.89]	.028 [0.71]
190540044	A-222-56X	---	---	56	.328 [8.33]						
190540048	A-226-38X	---	---	38	.390 [9.91]	.534 [13.56]	.552 [14.02]	1.309 [33.25]	.054 [1.37]	1.172 [29.77]	.031 [0.79]
190540051	A-232-04X	---	---	4	.119 [3.02]	.254 [6.45]	.240 [6.10]	.857 [21.77]	.062 [1.57]	.98 [24.89]	.028 [0.71]
190540052	A-232-06X	190540053	A-232-06XT	6	.146 [3.71]						
190540054	A-232-08X	---	---	8	.173 [4.39]						



PARTS ON TAPE

NOTES:

- MATERIAL:
 - (A). RING TONGUE TERMINAL: COPPER
PLATING: ELECTRO-TIN (.0003 MIN.)
 - (B). INSULATION: MOLDED PVC (RED)
- MWID: MAXIMUM WIRE INSULATION DIAMETER
- WIRE SIZE: 22 -18 AWG
.25 -1.5 MM²
- ALL DIMENSIONS IN INCHES/[MM].
- PARTS ARE ROHS COMPLIANT.
- DIMS. SHOWN ARE FOR REFERENCE ONLY.

THIS DRAWING CONTAINS INFORMATION THAT IS PROPRIETARY TO MOLEX ELECTRONIC TECHNOLOGIES, LLC AND SHOULD NOT BE USED WITHOUT WRITTEN PERMISSION													
DIMENSION UNITS		SCALE		CURRENT REV DESC: OBSOLETE PART NUMBERS AS PER PCN#512131									
INCH		NTS											
GENERAL TOLERANCES (UNLESS SPECIFIED)				EC NO: 727779				RING TONGUE TERMINAL INSULKRIMP 200-SERIES					
				DRWN: ANIKES1 2022/09/30									
4 PLACES ±				CHK'D: GGA 2022/11/29				PRODUCT CUSTOMER DRAWING					
3 PLACES ±				APPR: GGA 2022/11/29									
2 PLACES ± 0.13				INITIAL REVISION:				DOCUMENT NUMBER					
1 PLACE ± 0.25				DRWN: ABENJAMINLW 2019/08/23									
0 PLACES ±				APPR: JMACNEIL 2019/09/05				190540031					
ANGULAR TOL ± 0.5 °				THIRD ANGLE PROJECTION				DOC TYPE		DOC PART		REVISION	
DRAFT WHERE APPLICABLE MUST REMAIN WITHIN DIMENSIONS				DRAWING		SERIES		MATERIAL NUMBER		CUSTOMER		SHEET NUMBER	
				C-SIZE		19054		SEE TABLE		GENERAL MARKET		1 OF 1	