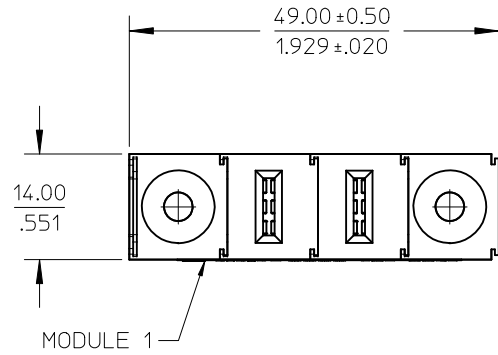
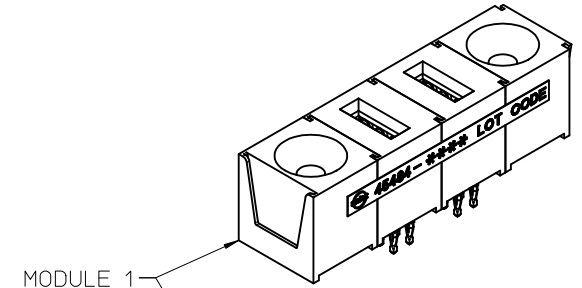
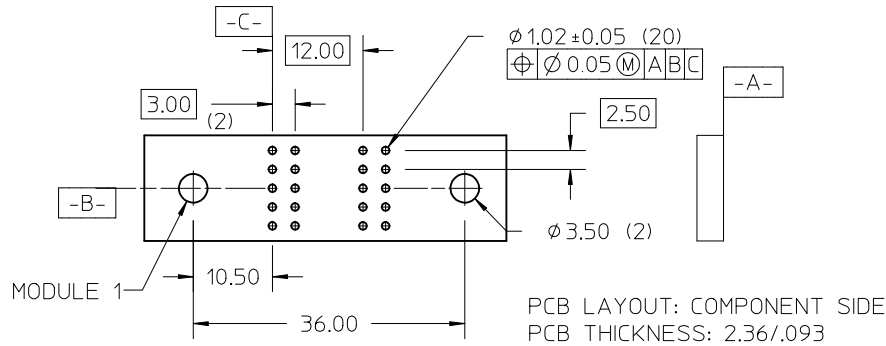
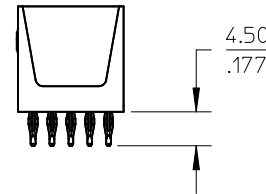
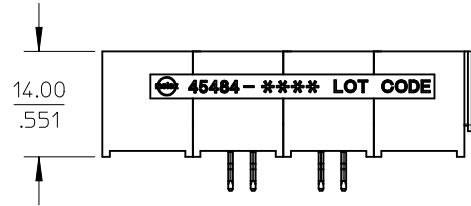


NOTES:

- 1. MATERIAL: LCP, GLASS FILLED, UL 94V-0, BLACK
CONTACTS: COPPER ALLOY
- 2. FINISH: SELECT GOLD 30 μN MIN
SELECT TIN 100 μN MIN
BOTH OVER NICKEL
- 3. PRODUCT SPECIFICATION: PS-45424-001
- 4. PACKAGING SPECIFICATION: PK-45424-001
- 5. PCB HOLE SPECIFICATION: PS-45424-001
- 6. THIS PART CONFORMS TO CLASS B REQUIREMENTS OF
COSMETIC SPEC PS-45499-002.



MODULE 1



MODULE 1

PD 502	PD 216	PD 216	PD 502
-----------	-----------	-----------	-----------

INITIAL RELEASE EC NO: UCP2012-3818 DRWN: JSCHAFFER CH'KD: APPR: APATEL 2012/06/26 DESCRIPTION	QUALITY SYMBOLS	GENERAL TOLERANCES (UNLESS SPECIFIED)		DIMENSION STYLE	SCALE	DESIGN UNITS	THIRD ANGLE PROJECTION		
	$\nabla = 0$ $\nabla = 0$ $\nabla = 0$	mm	INCH	MM ONLY	1:1	METRIC			
		4 PLACES	± ---	± ---	DRAWN BY	DATE	POWER DOCK ASSEMBLY SOCKET, VERTICAL CPI		
		3 PLACES	± ---	± ---	JSCHAFFER	2012/06/18			
		2 PLACES	± 0.13	± ---	CHECKED BY	DATE			
	1 PLACE	± 0.25	± ---	APPROVED BY	DATE				
	0 PLACE	± ---	± ---	APATEL	2012/06/26	DOCUMENT NO.			
		ANGULAR ± 1/2°		MATERIAL NO.	45484-0179		SD-45484-0179		
		DRAFT WHERE APPLICABLE MUST REMAIN WITHIN DIMENSIONS		SIZE	A		SHEET NO. 1 OF 1		