

DO NOT SCALE FROM THIS PRINT

FIG 1  
SPE-01-01-E SHOWN  
DESIGNED & DIMENSIONED  
IN MILLIMETERS [INCHES]

SPE-XX-XX-X  
 No OF PORTS  
 -01, -02  
 LEAD STYLE  
 -01: RIGHT ANGLE  
 PLATING SPECIFICATION  
 -E: SELECTIVE, 0.00127 MIN GOLD ON CONTACT, FLASH GOLD ON TAIL

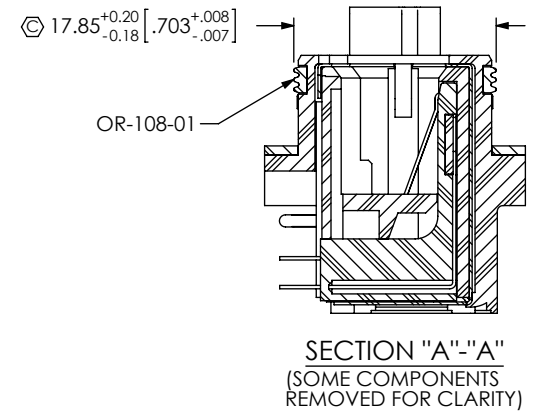
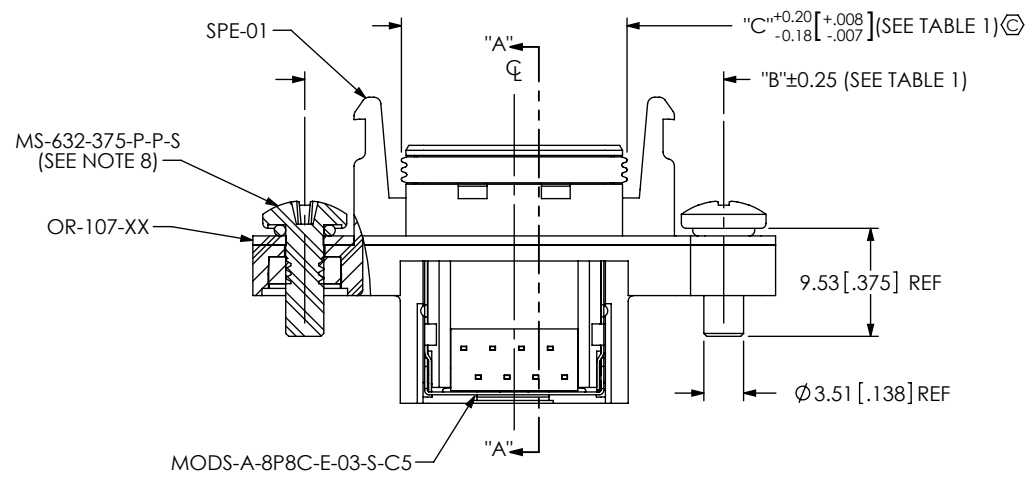
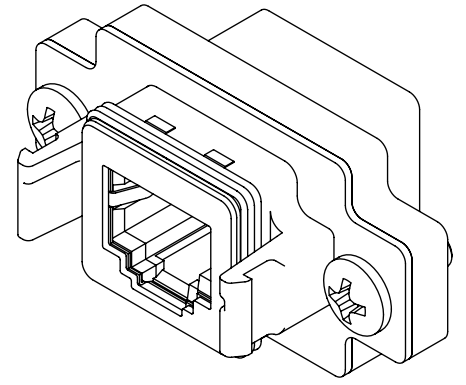
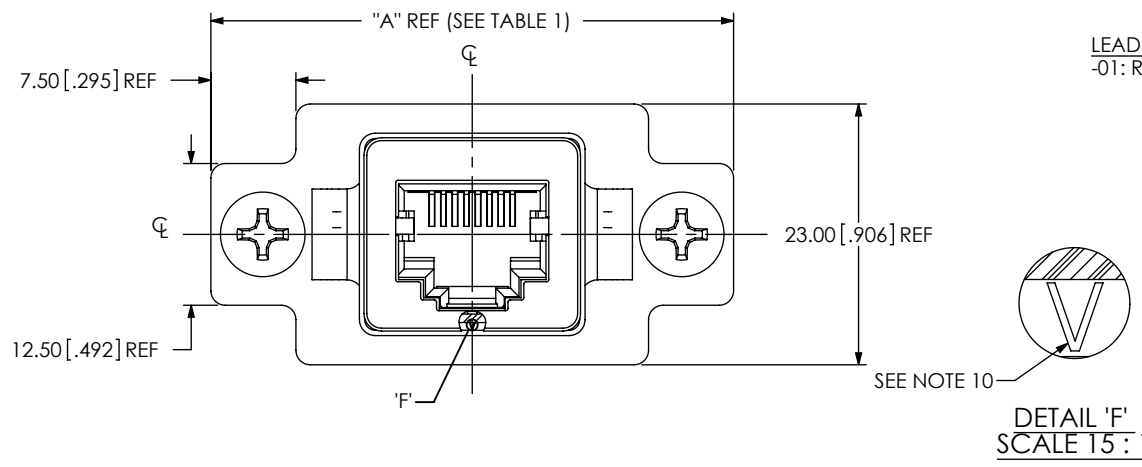


TABLE 1

PORT	"A"	"B"	"C"
-01	46.10 [1.815]	36.95 [1.455]	19.90 [0.783]
-02	58.70 [2.311]	49.55 [1.951]	37.60 [1.480]

NOTES:

- ⊕ REPRESENTS A CRITICAL DIMENSION.
- COPLANARITY TO BE WITHIN 0.10[.004].
- BURR ALLOWANCE: 0.038[.0015] MAX.
- MINIMUM PUSHOUT FORCE: 4.4N[1.00 LB].
- MAXIMUM ALLOWABLE BOW: 0.05[.002] MM/MM AFTER ASSEMBLY.
- PANEL THICKNESS: 0.08[.030] - 3.96[.156], RECOMMENDED PANEL CUT OUT ON SHEET 2.
- ALL PARTS MUST BE PACKAGED IN TUBES.
- SEALING O-RING IS INCLUDED WITH MS-632-375-P-P-S.
- REQUIRED TORQUE ON MS-632-375-P-P-S: 0.32+/-0.07Nm [45+/-10 IN-OZ].
- OR-108-XX POSITION INDICATOR.

UNLESS OTHERWISE SPECIFIED, DIMENSIONS ARE IN MILLIMETERS. TOLERANCES ARE:  
 DECIMALS ANGLES  
 X.X: ±0.3 [.01] 2°  
 X.XX: ±0.13 [.005]  
 X.XXX: ±0.051 [.0020]

PROPRIETARY NOTE  
 THIS DOCUMENT CONTAINS INFORMATION CONFIDENTIAL AND PROPRIETARY TO SAMTEC, INC. AND SHALL NOT BE REPRODUCED OR TRANSFERRED TO OTHER DOCUMENTS OR DISCLOSED TO OTHERS OR USED FOR ANY PURPOSE OTHER THAN THAT WHICH IT WAS OBTAINED WITHOUT THE EXPRESSED WRITTEN CONSENT OF SAMTEC, INC.

MATERIAL: DO NOT SCALE DRAWING SHEET SCALE: 3:2  
 INSULATOR: LCP, COLOR: BLACK  
 CONTACT: PHOS BRONZE  
 SHIELD: COPPER ALLOY  
 SEAL: NBR  
 SCREW: STAINLESS STEEL  
 NUT: STAINLESS STEEL  
 O-RING: SILICONE  
 F:\DWG\MISC\MKTG\SPE-XX-XX-X-MKT.SLDDRW

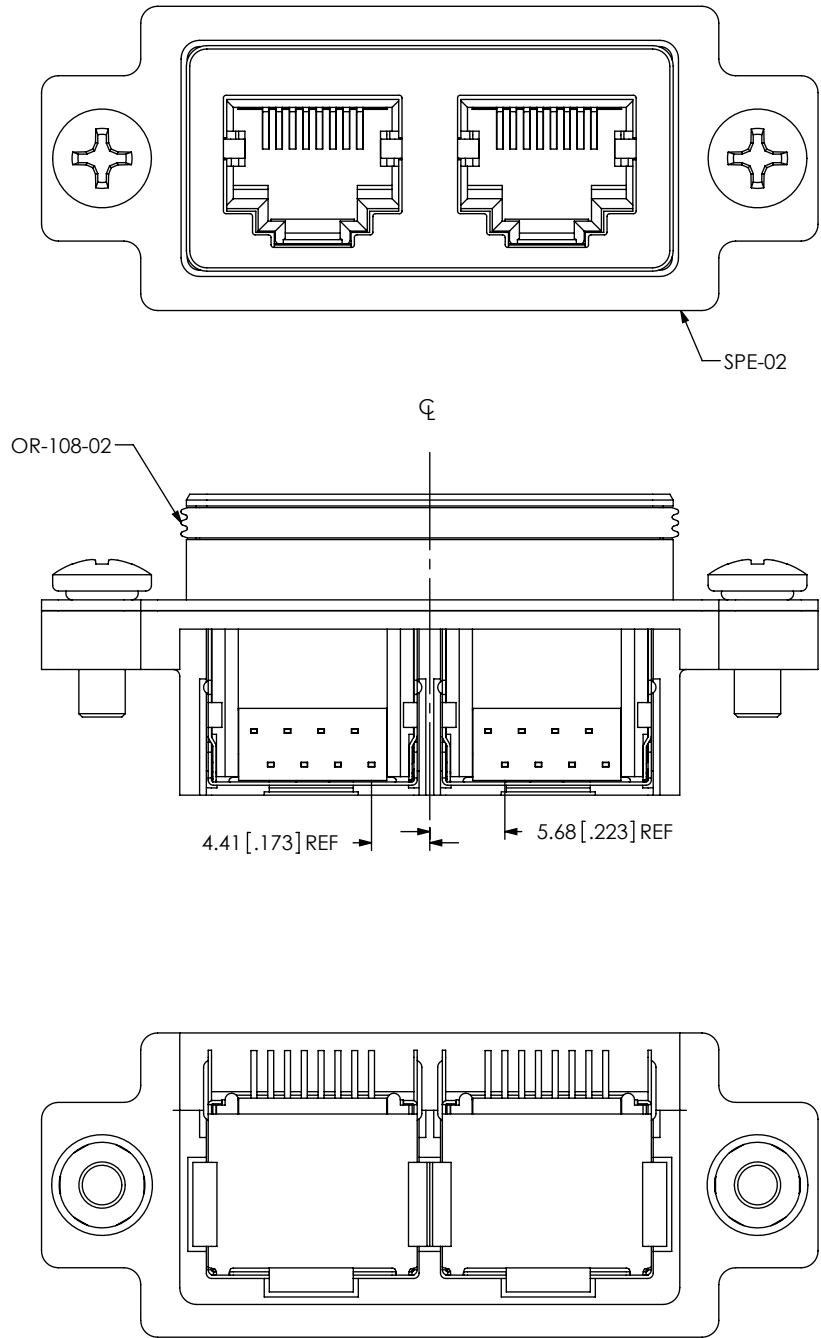
520 PARK EAST BLVD, NEW ALBANY, IN 47150  
 PHONE: 812-944-6733 FAX: 812-948-5047  
 e-Mail: info@SAMTEC.com code 55322

DESCRIPTION:  
 SEAL RECTANGULAR RECEPTACLE, ETHERNET

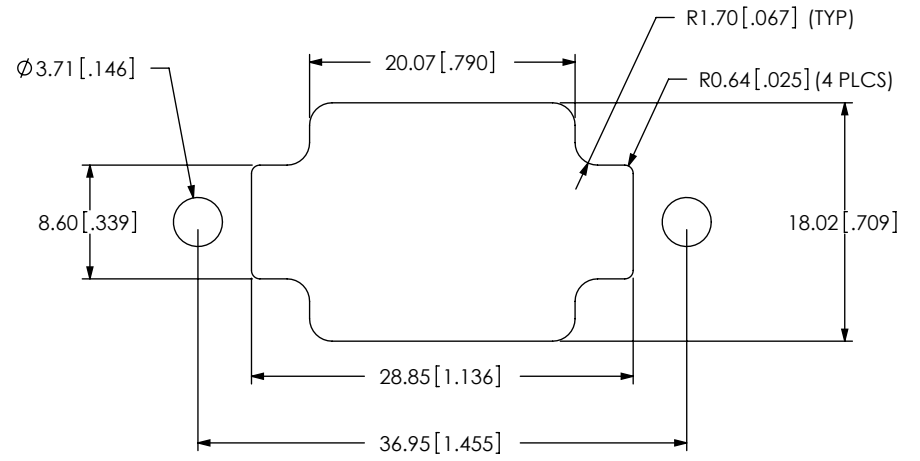
DWG. NO.  
**SPE-XX-XX-X**

BY: T NEWTON 01/15/2009 SHEET 1 OF 6

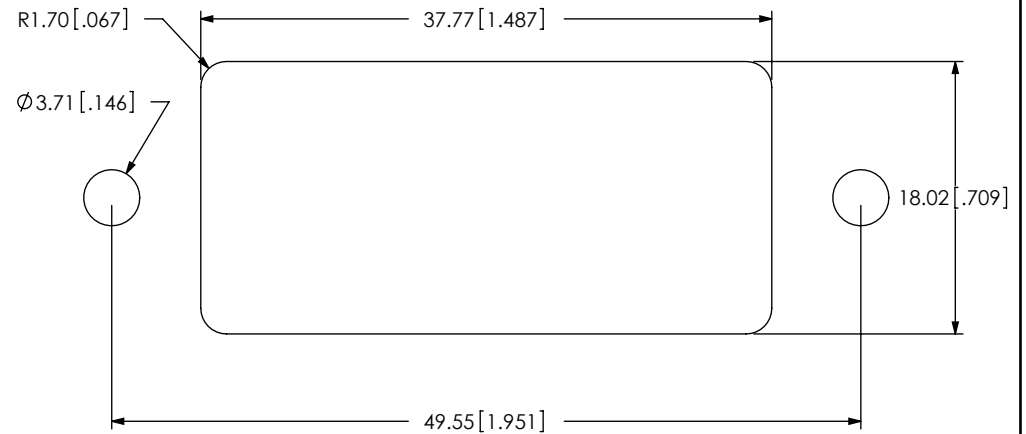
FIG 2  
SPE-02-01-E SHOWN  
(SAME AS FIG 1, DIFFERENT AS SHOWN)



-01 RECOMMENDED PANEL CUT OUT  
(SEE NOTE 6)



-02 RECOMMENDED PANEL CUT OUT  
(SEE NOTE 6)



PROPRIETARY NOTE  
THIS DOCUMENT CONTAINS INFORMATION  
CONFIDENTIAL AND PROPRIETARY TO  
SAMTEC, INC. AND SHALL NOT BE REPRODUCED  
OR TRANSFERRED TO OTHER DOCUMENTS OR  
DISCLOSED TO OTHERS OR USED FOR ANY  
PURPOSE OTHER THAN THAT WHICH IT WAS  
OBTAINED WITHOUT THE EXPRESSED WRITTEN  
CONSENT OF SAMTEC, INC.

DO NOT SCALE DRAWING

SHEET SCALE: 1:75:1

**samtec**

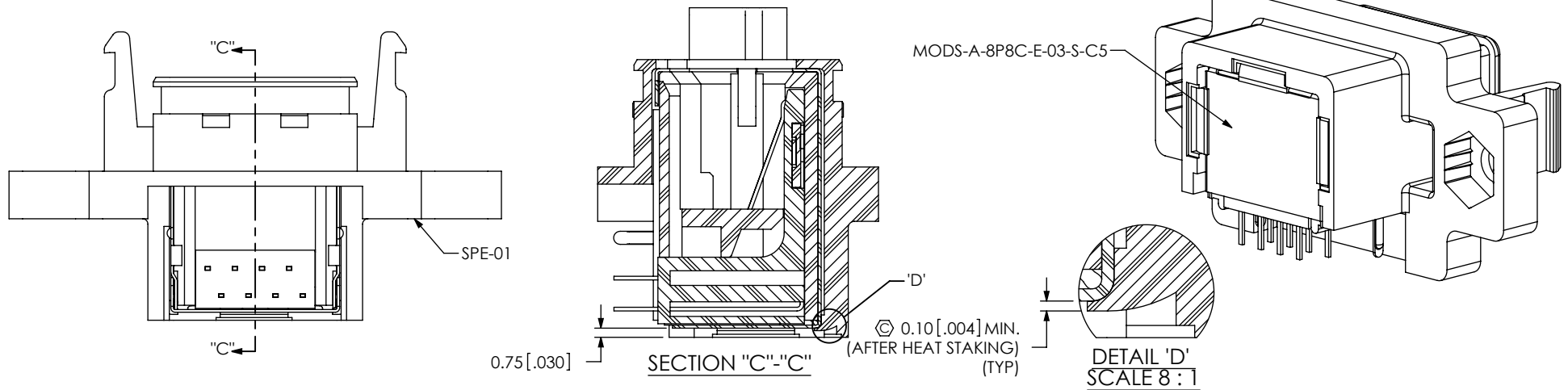
520 PARK EAST BLVD, NEW ALBANY, IN 47150  
PHONE: 812-944-6733 FAX: 812-948-5047  
e-Mail: info@SAMTEC.com code 55322

DESCRIPTION:  
SEAL RECTANGULAR RECEPTACLE, ETHERNET

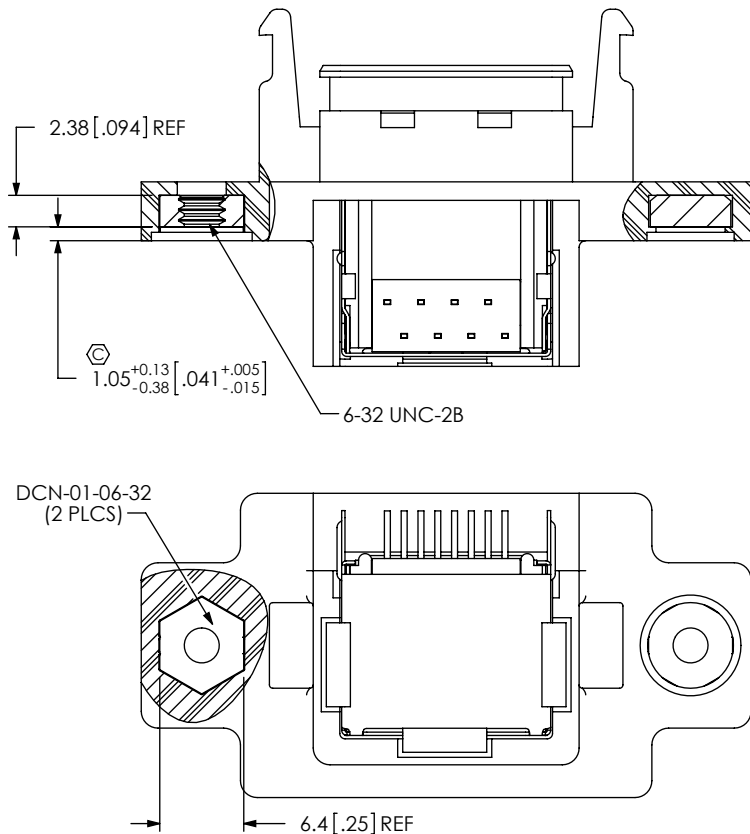
DWG. NO.  
SPE-XX-XX-X

BY: T NEWTON 01/15/2009 SHEET 2 OF 6

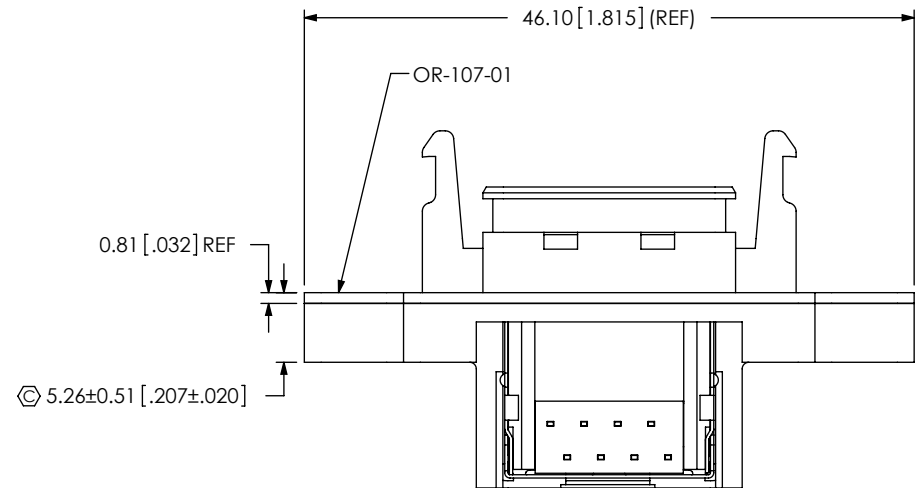
-01 IN-PROCESS 1  
ADD SPE-01 AND HEAT STAKE



-01 IN-PROCESS 2  
FILL DCN-01-06-32 & HEAT STAKE



-01 IN-PROCESS 3  
ADD OR-107-01



PROPRIETARY NOTE

THIS DOCUMENT CONTAINS INFORMATION CONFIDENTIAL AND PROPRIETARY TO SAMTEC, INC. AND SHALL NOT BE REPRODUCED OR TRANSFERRED TO OTHER DOCUMENTS OR DISCLOSED TO OTHERS OR USED FOR ANY PURPOSE OTHER THAN THAT WHICH IT WAS OBTAINED WITHOUT THE EXPRESSED WRITTEN CONSENT OF SAMTEC, INC.

DO NOT SCALE DRAWING

SHEET SCALE: 1:75:1

**samtec**

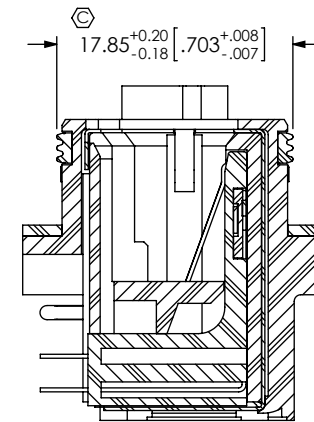
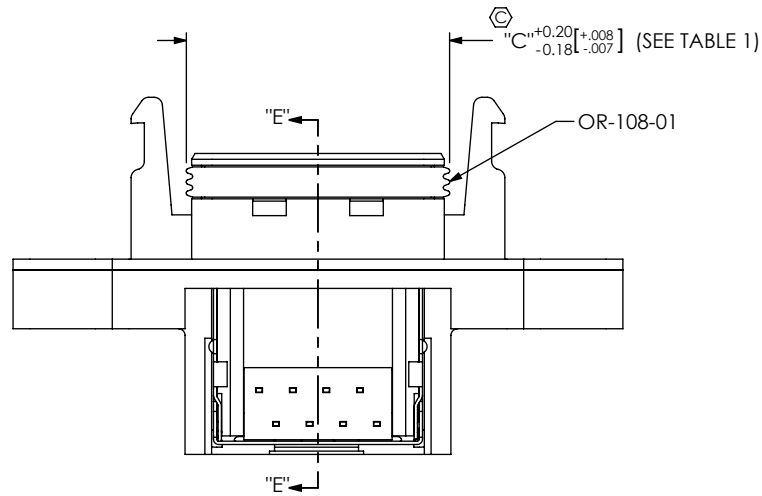
520 PARK EAST BLVD, NEW ALBANY, IN 47150  
PHONE: 812-944-6733 FAX: 812-948-5047  
e-Mail: info@SAMTEC.com code 55322

DESCRIPTION:  
SEAL RECTANGULAR RECEPTACLE, ETHERNET

DWG. NO.  
SPE-XX-XX-X

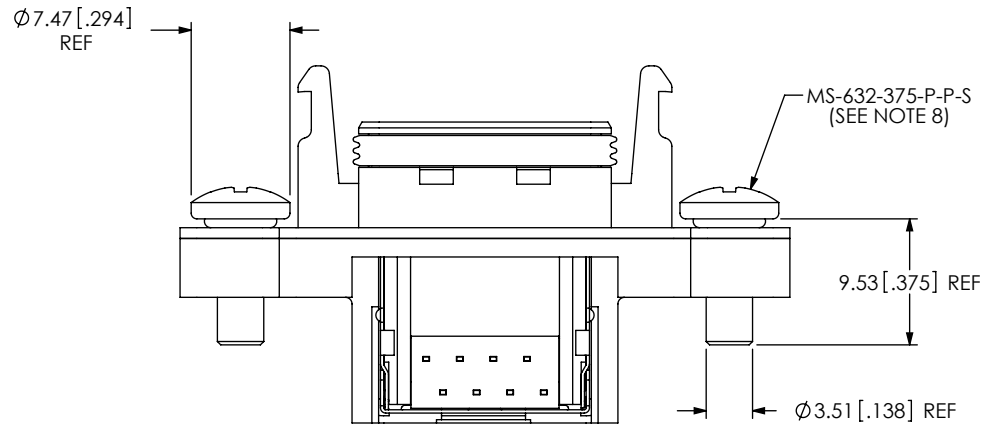
BY: T NEWTON 01/15/2009 SHEET 3 OF 6

-01 IN-PROCESS 4  
ADD OR-108-01



SECTION "E"-E"

-01 IN-PROCESS 5  
ADD MS-632-375-P-P-S



PROPRIETARY NOTE

THIS DOCUMENT CONTAINS INFORMATION CONFIDENTIAL AND PROPRIETARY TO SAMTEC, INC. AND SHALL NOT BE REPRODUCED OR TRANSFERRED TO OTHER DOCUMENTS OR DISCLOSED TO OTHERS OR USED FOR ANY PURPOSE OTHER THAN THAT WHICH IT WAS OBTAINED WITHOUT THE EXPRESSED WRITTEN CONSENT OF SAMTEC, INC.

DO NOT SCALE DRAWING

SHEET SCALE: 1:75:1

**samtec**

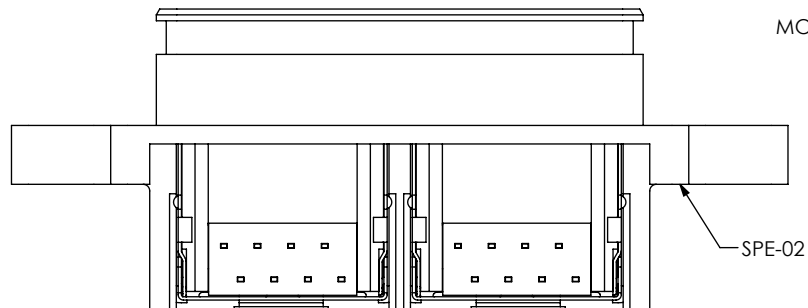
520 PARK EAST BLVD, NEW ALBANY, IN 47150  
PHONE: 812-944-6733 FAX: 812-948-5047  
e-Mail: info@SAMTEC.com code 55322

DESCRIPTION:  
SEAL RECTANGULAR RECEPTACLE, ETHERNET

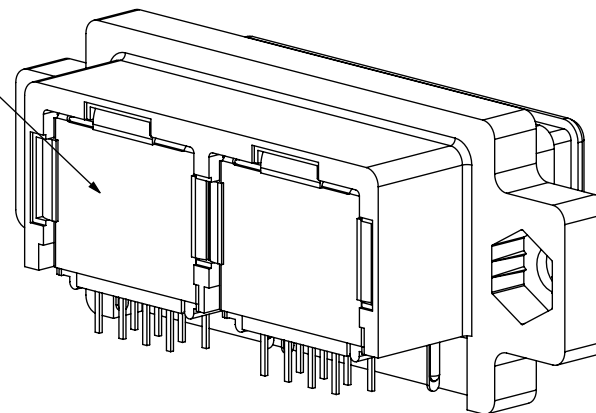
DWG. NO.  
SPE-XX-XX-X

BY: T NEWTON 01/15/2009 SHEET 4 OF 6

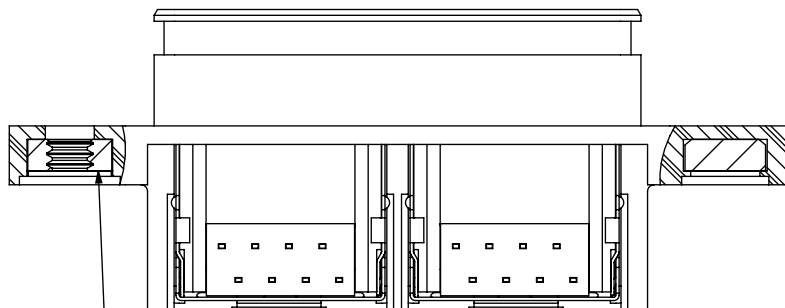
**-02 IN-PROCESS 1**  
 ADD SPE-02 AND HEAT STAKE  
 (SAME AS -01 IN-PROCESS 1, UNLESS OTHERWISE STATED)



MODS-A-8P8C-E-03-S-C5

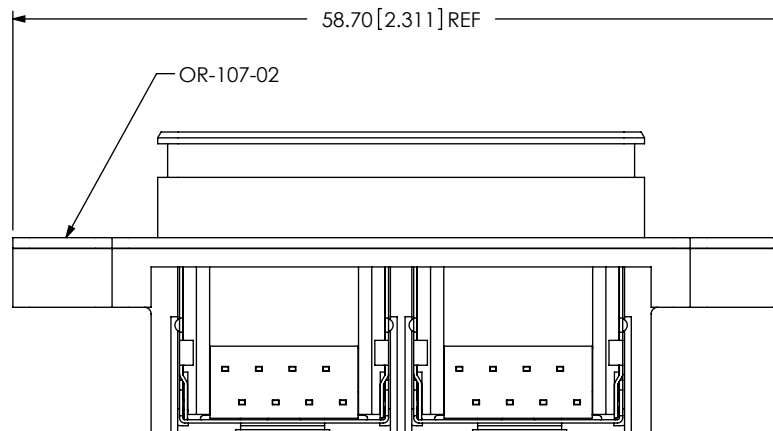


**-02 IN-PROCESS 2**  
 FILL DCN-01-06-32 & HEAT STAKE  
 (SAME AS -01 IN-PROCESS 2, UNLESS OTHERWISE STATED)



DCN-01-06-32

**-02 IN-PROCESS 3**  
 ADD OR-107-02  
 (SAME AS -01 IN-PROCESS 3, UNLESS OTHERWISE STATED)



**PROPRIETARY NOTE**

THIS DOCUMENT CONTAINS INFORMATION CONFIDENTIAL AND PROPRIETARY TO SAMTEC, INC. AND SHALL NOT BE REPRODUCED OR TRANSFERRED TO OTHER DOCUMENTS OR DISCLOSED TO OTHERS OR USED FOR ANY PURPOSE OTHER THAN THAT WHICH IT WAS OBTAINED WITHOUT THE EXPRESSED WRITTEN CONSENT OF SAMTEC, INC.

DO NOT SCALE DRAWING

SHEET SCALE: 1:75:1

**samtec**

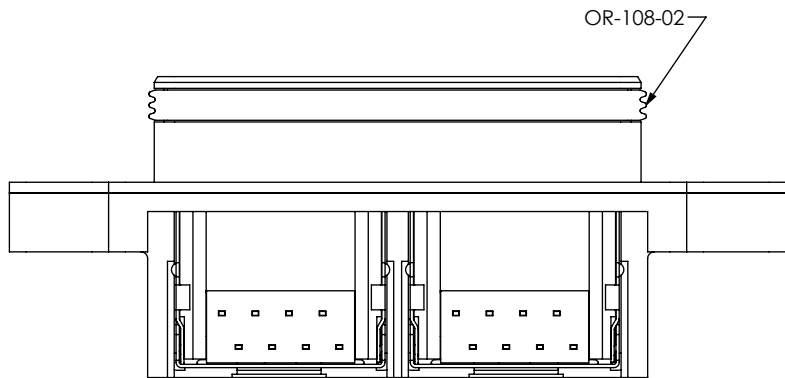
520 PARK EAST BLVD, NEW ALBANY, IN 47150  
 PHONE: 812-944-6733 FAX: 812-948-5047  
 e-Mail: info@SAMTEC.com code 55322

DESCRIPTION:  
 SEAL RECTANGULAR RECEPTACLE, ETHERNET

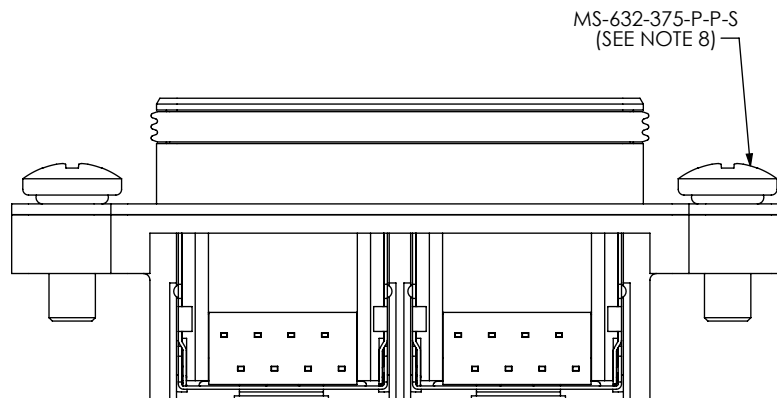
DWG. NO. **SPE-XX-XX-X**

BY: T NEWTON 01/15/2009 SHEET 5 OF 6

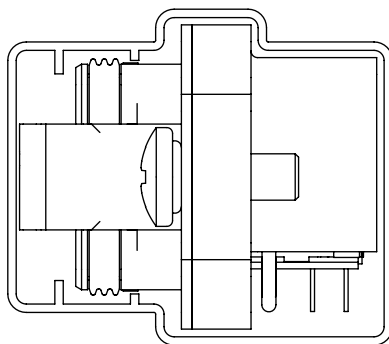
-02 IN-PROCESS 4  
 ADD OR-108-02  
 (SAME AS -01 IN-PROCESS 4, UNLESS OTHERWISE STATED)



-02 IN-PROCESS 5  
 ADD MS-632-375-P-P-S  
 (SAME AS -01 IN-PROCESS 5, UNLESS OTHERWISE STATED)



PACKAGING VIEW  
 (SEE NOTE 7)



TUBE: PT-SPE001  
 PLUG: TP-50

**PROPRIETARY NOTE**  
 THIS DOCUMENT CONTAINS INFORMATION  
 CONFIDENTIAL AND PROPRIETARY TO  
 SAMTEC, INC. AND SHALL NOT BE REPRODUCED  
 OR TRANSFERRED TO OTHER DOCUMENTS OR  
 DISCLOSED TO OTHERS OR USED FOR ANY  
 PURPOSE OTHER THAN THAT WHICH IT WAS  
 OBTAINED WITHOUT THE EXPRESSED WRITTEN  
 CONSENT OF SAMTEC, INC.

DO NOT SCALE DRAWING

SHEET SCALE: 1.75:1



520 PARK EAST BLVD, NEW ALBANY, IN 47150  
 PHONE: 812-944-6733 FAX: 812-948-5047  
 e-Mail info@SAMTEC.com code 55322

DESCRIPTION:  
 SEAL RECTANGULAR RECEPTACLE, ETHERNET

DWG. NO. **SPE-XX-XX-X**

BY: T NEWTON 01/15/2009 SHEET 6 OF 6