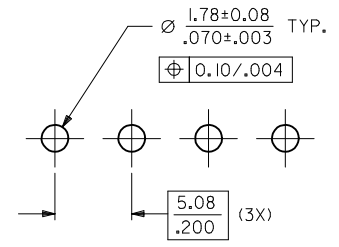
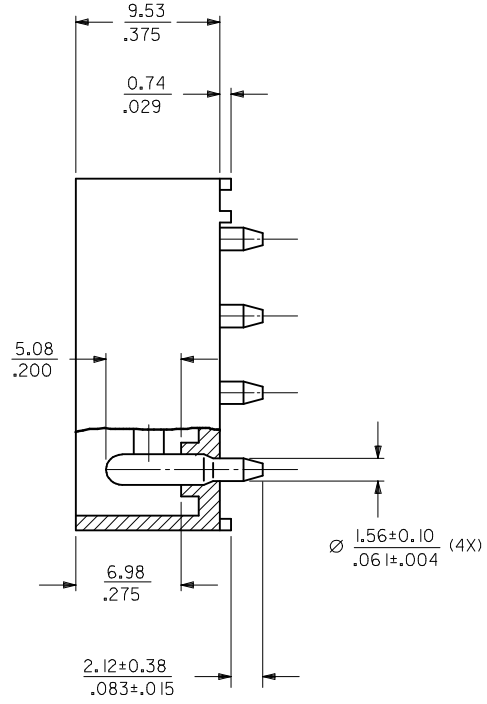
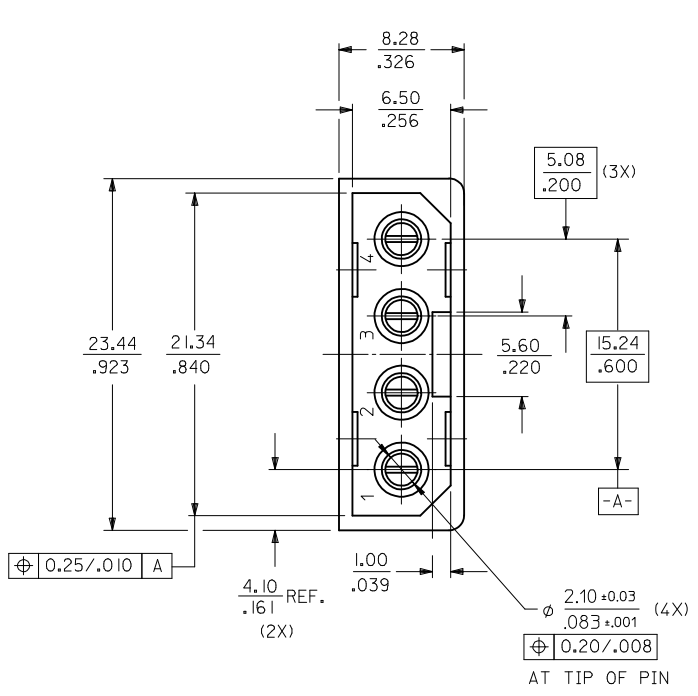


| | |
|------------|---------------|
| MAT'L NO. | ENG NO. |
| 15-24-4557 | A-8981-4V4-LF |



RECOMMENDED PCB HOLE LAYOUT

NOTES :

1. PLATING
POSTPLATE 0.00254/0.000100 MIN. TIN
OVER 0.00127/0.000050 MIN. NICKEL OVERALL.
2. PART TO MATE WITH HOUSING 8981-4P2
AND TERMINAL 8980-3*.
3. PRODUCT SPEC PS-8981-4V4/4R1-P APPLIES.
4. MATERIAL:
HOUSING - PCT, GLASS FILLED, UL94V-0
COLOR BLACK
TERMINAL - PHOS BRONZE

| | | | | | | | |
|--|--------------------|--|---|---|--|--------------|------------------------|
| ADD CKT INDICATION EC NO: S2009-0836 DRWN:SKANG 2009/05/08 CHKD:ATSEE 2009/05/08 APPR:MLONG 2009/05/11 | DESCRIPTION REV | QUALITY SYMBOLS | GENERAL TOLERANCES (UNLESS SPECIFIED) | DIMENSION STYLE | SCALE | DESIGN UNITS | THIRD ANGLE PROJECTION |
| | | $\nabla=0$ $\square=0$ | mm INCH | MM/IN | NTS | METRIC | |
| | | 4 PLACES ± --- ± --- 3 PLACES ± --- ± .008 2 PLACES ± 0.20 ± --- 1 PLACE ± --- ± --- ANGULAR ± 3 ° | DRAWN BY SKTOH DATE 1991/03/25 CHECKED BY GWANG DATE 1991/03/28 APPROVED BY RWONG DATE 1991/03/28 | DATE 1991/03/25 DATE 1991/03/28 DATE 1991/03/28 | TITLE POWER CONNECTOR, 4 CKTS VERTICAL MOUNT | | |
| | | DRAFT WHERE APPLICABLE MUST REMAIN WITHIN DIMENSIONS | MATERIAL NO. SEE TABLE | DOCUMENT NO. SD-8981-4V4 | SHEET NO. 1 OF 1 | | |