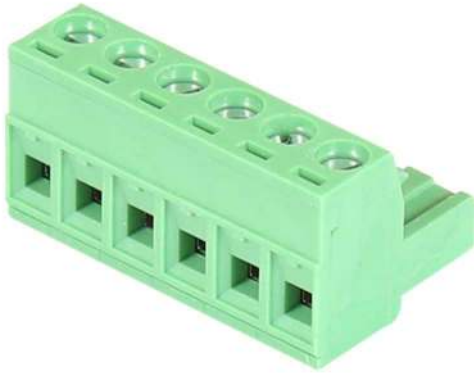


TB-6P-Male

6-pin terminal block, Male, 300V/16A Green terminal block used on 6 pin power connectors on Antaira Switches



Features

- ▶ Plug Component
- ▶ Pitch: 5mm
- ▶ Number of Positions: 6
- ▶ Nominal Current: 16 A
- ▶ Voltage: 300 V
- ▶ Connection Type: Screw Connection
- ▶ Color: Green

SPECIFICATIONS

Dimensions/Positions

Pitch	5 mm
Number of Positions	6
Screw Thread	M3
Dimension a	30 mm
Weight	0.009 kg
Tightening Torque, min	0.5 Nm
Tightening Torque, max	0.6 Nm

Technical Data

Nominal Current I_N	16 A
Nominal Voltage U_N	300 V
Operation Temperature	-40°C – 105°C
Wire Range	12 ~ 24 AWG
Stripping Length	4mm ~ 5 mm

Regulatory Approvals

Green	RoHS Compliant
Certifications	UL 1059, VDE, REACH

ORDERING INFO

TB-6P-Male	6-pin terminal block, Male, 300V/16A Green. Terminal block used on 6 pin power connectors on Antaira Switches
------------	---