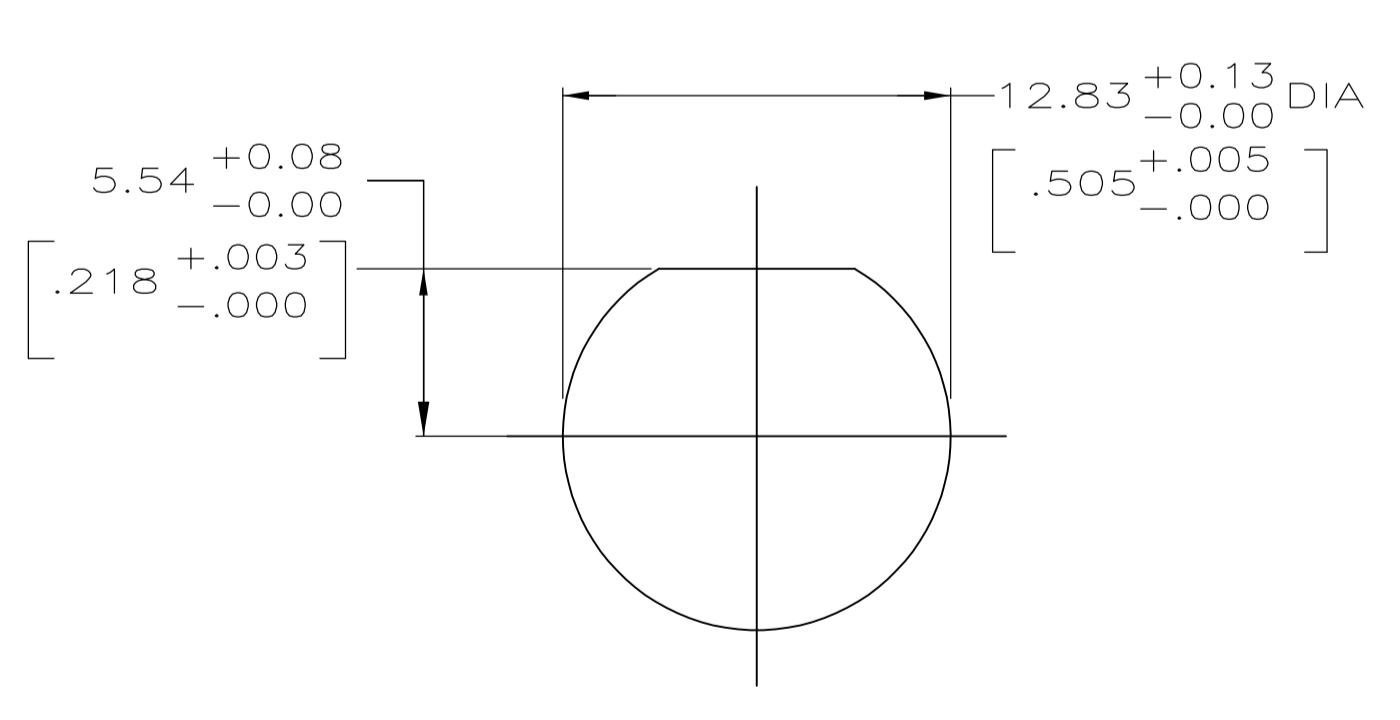
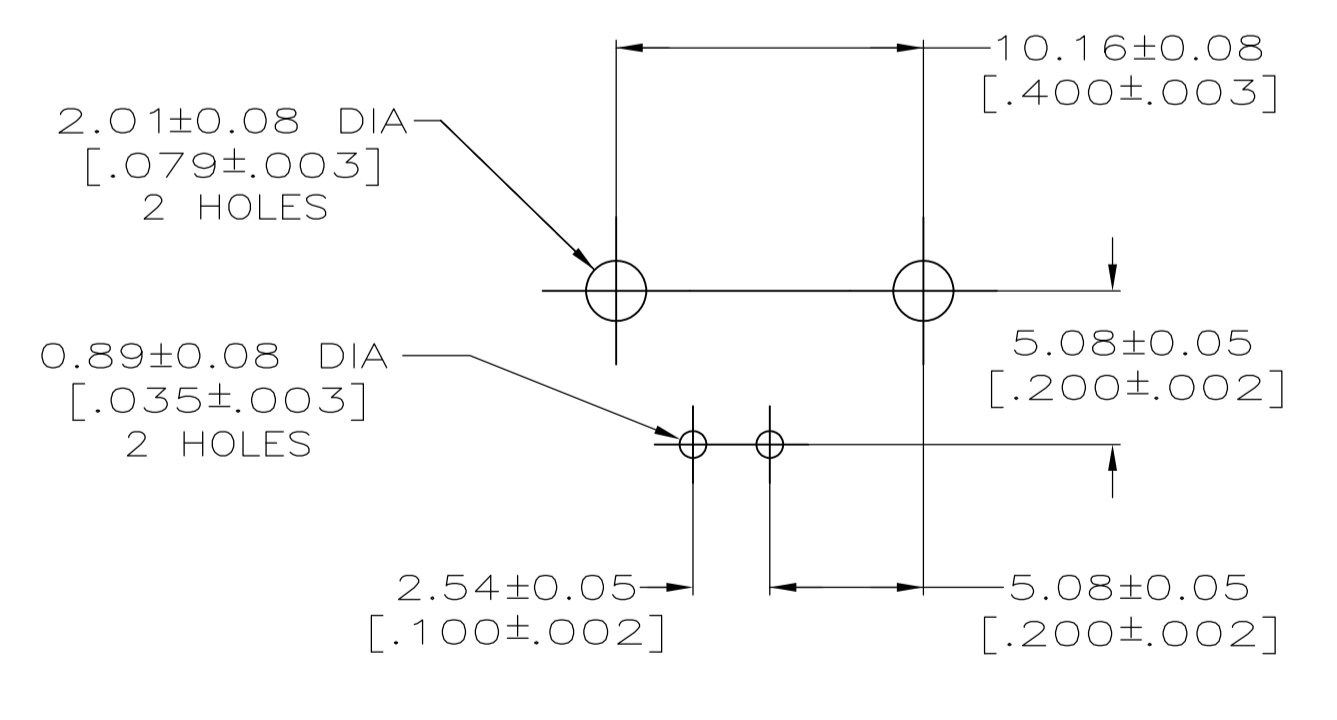


- 1 ZINC PER QQ-Z-363.
- 2 POLYMETHYLPENTENE, GENERAL PURPOSE.
- 3 BERYLLIUM COPPER PER QQ-C-530.
- 4 BRASS PER ASTM-B-453.
- 5 BRASS PER ASTM-B-16.
- 6 NICKEL PLATE PER QQ-N-290, 3.81 μm [.000150] MINIMUM THICK.
- 7 TIN PLATE PER ASTM-B-545, 3.81 μm [.000150] MINIMUM THICK.
- 8 GOLD PLATE PER ASTM-B-488, 0.76 μm [.000030] MINIMUM THICK.
- 9. SEE INSTRUCTION SHEET 408-2769.



RECOMMENDED PANEL CUTOUT



PCB CONFIGURATION

2.03 ±0.13 [.080 ±0.005]	2.29 ±0.13 [.090 ±0.005]	5414907-3
2.03 ±0.13 [.080 ±0.005]	2.79 ±0.25 [.110 ±0.010]	5414907-2
3.48 ±0.25 [.137 ±0.010]	4.11 ±0.43 [.162 ±0.017]	5414907-1
B	A	PART NUMBER

THIS DRAWING IS A CONTROLLED DOCUMENT.

DIMENSIONS: mm [INCHES]

TOLERANCES UNLESS OTHERWISE SPECIFIED:

0. PLC	±	-
1. PLC	±	-
2. PLC	±	0.20 [.008]
3. PLC	±	-
4. PLC	±	-
ANGLES	±	-

MATERIAL: SEE NOTES 1 - 5

FINISH: SEE NOTES 6 - 8

WEIGHT: -

SCALE: 5:1

SHEET: 1 OF 1

REV: A1

CUSTOMER DRAWING

APPROVED: J. LIPPERT

DATE: 26APR2005

NAME: JACK, RIGHT ANGLE, 75 OHM, LOW PROFILE, PCB, BNC

SIZE: A1

CAGE CODE: 00779

DRAWING NO: 5414907

RESTRICTED TO: -

TE Connectivity