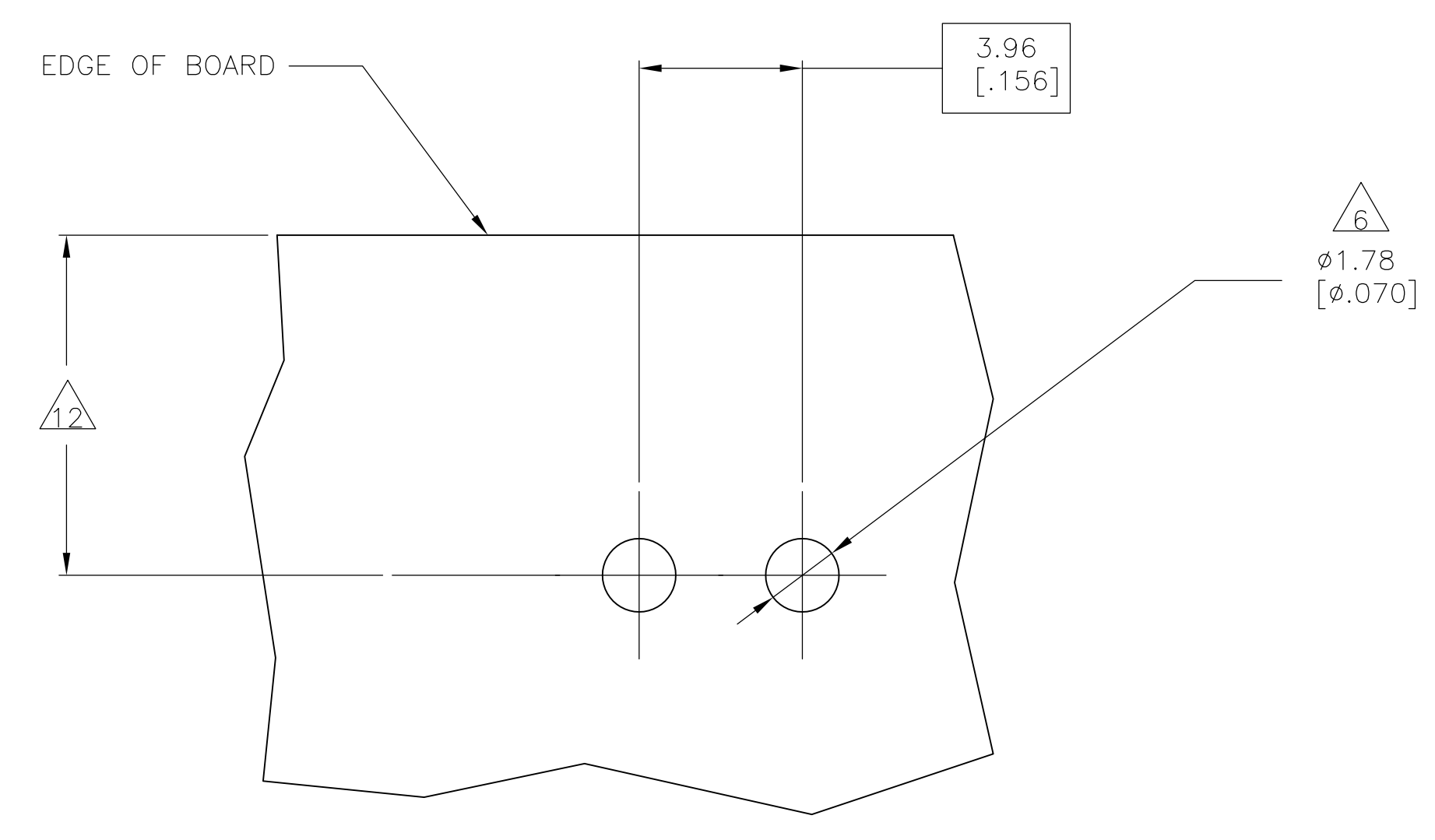
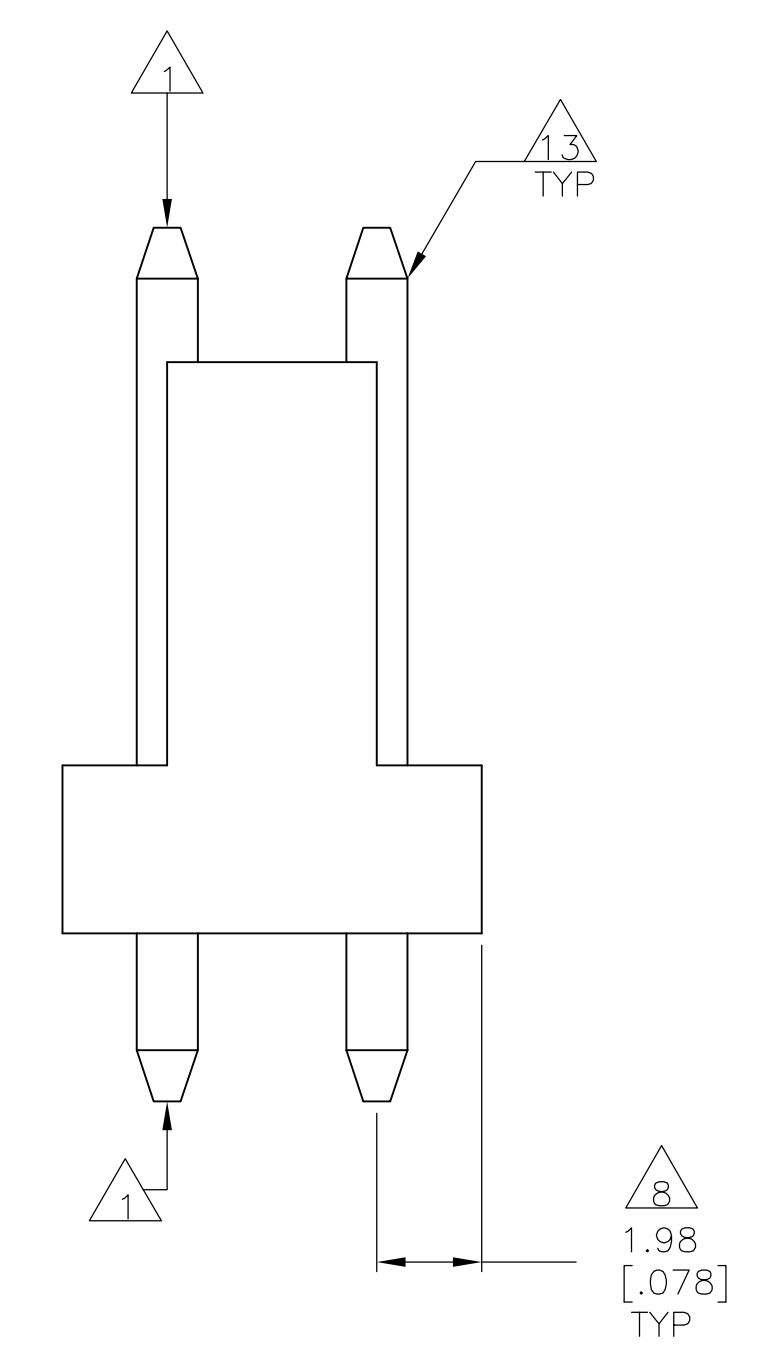
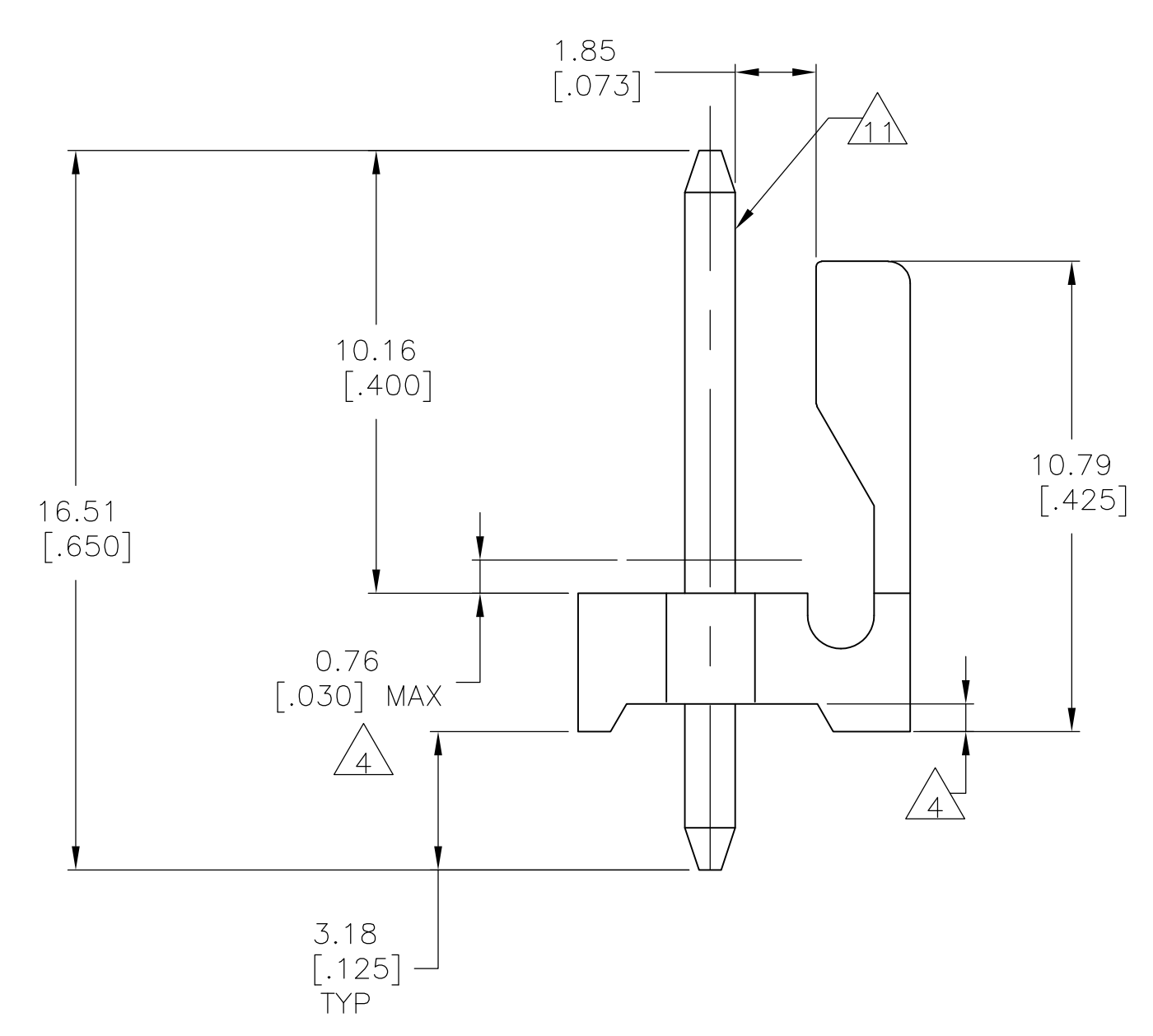
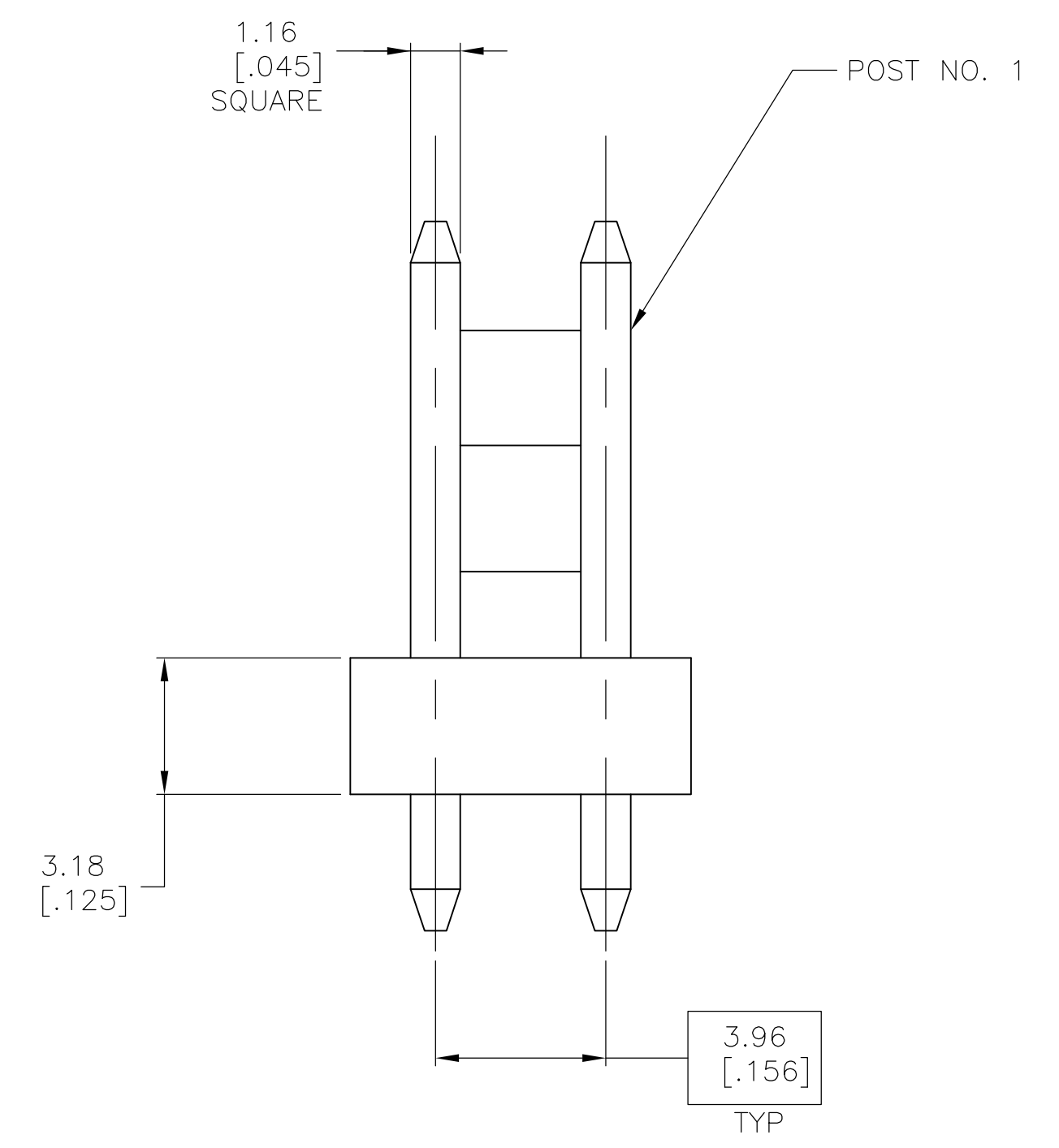
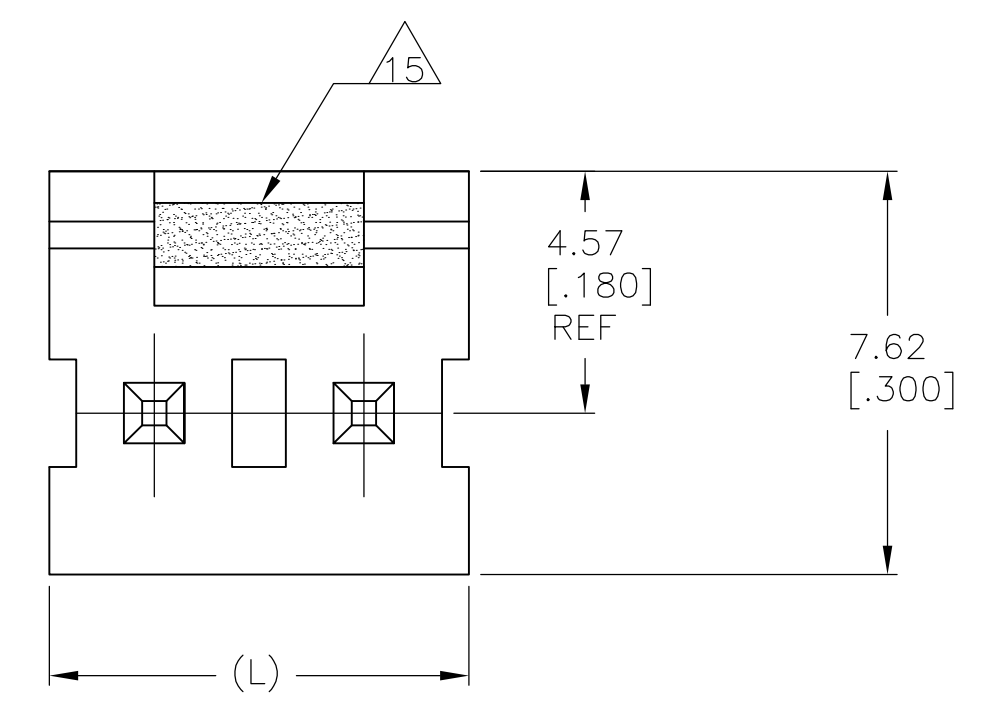


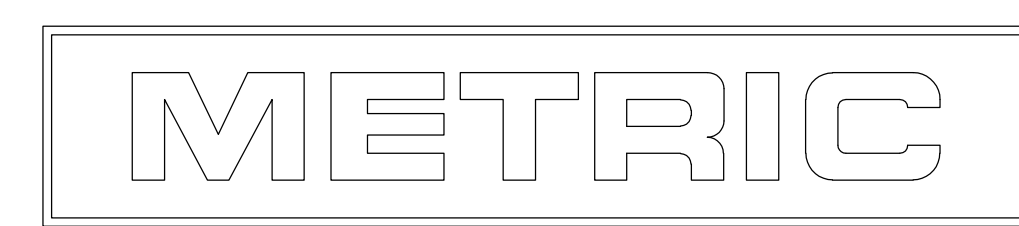
LOC		DIST		REVISIONS			
CM	00	REV	DATE	DESCRIPTION	DATE	BY	APPV
B1	REVISED PER ECO-11-017228		25AUG11			HMR	MS



- 1 POST TO WITHSTAND 13 NEWTONS (3 LBS.) MIN. AXIAL FORCE IN BOTH DIRECTIONS SHOWN WITHOUT DISLODGING.
- 2 TOLERANCES APPLY TO SOLDER SIDE OF BOARD.
- 4 PLASTIC FLASH PERMITTED IN THIS AREA.
- 5 PARTS COMPLY WITH AMP SOLDERABILITY SPEC. NO. 109-11-2.
- 6 ONE HOLE MAY BE UNDERSIZED (1.65 [.065]/1.52 [.060] DIA.) FOR ASSEMBLY RETENTION DURING WAVE SOLDERING.
- 7 MATERIAL: HEADER-THERMOPLASTIC POLYESTER  
GLASS-FILLED 94V-0 (NATURAL)  
POST-COPPER ALLOY (TIN PLATED)
- 8 COORDINATE DIMENSION APPLIES FROM CENTER OF ACTUAL FEATURE.
- 9 PLASTIC BURRS CAUSED BY CUT-OFF TOOLING ARE PERMITTED WITHIN THE MAXIMUM TOLERANCE ENVELOPE.
- 11 POST MUST WITHSTAND TWO 90° BENDS AGAINST EXTRUSION WITHOUT BREAKING.
- 12 DIMENSION SHOULD BE 4.45 [.175] MIN WHEN MATING WITH AN MTA 156 CONNECTOR ASSEMBLY OR AN SL-156 CONNECTOR ASSEMBLY.
- 13 PIN BURR OF 0.13 [.005] MAX. VERTICAL AND 0.08 [.003] MAXIMUM HORIZONTAL PERMITTED AT POST TIPS ON BOTH ENDS.
- 14 SPECIAL PACKAGING VARIATION FOR IMPROVED PRODUCT PROTECTION.
- 15 GREEN STRIPE.

7.92	.312	2	1744002-2
MM	[IN]	NUMBER OF POSITIONS	PART NUMBER
L			

THIS DRAWING IS A CONTROLLED DOCUMENT.		DIN S. HOOVER 18DEC03	TE Connectivity
DIMENSIONS: mm [INCHES]		CHK: D. ROSSI 18DEC03	
TOLERANCES UNLESS OTHERWISE SPECIFIED:		APP'D: D. ROSSI 18DEC03	NAME: MAT-156 HEADER ASSEMBLY, FRICTION LOCK, STRAIGHT
0. PLC ± -		PRODUCT SPEC	1.14 [.045] SQUARE POST, TIN PLATED
1. PLC ± -		APPLICATION SPEC	SIZE: A1
2. PLC ± 0.36 [.015]		WEIGHT: -	CAGE CODE: 00779
3. PLC ± 0.13 [.005]		RESTRICTED TO: -	DRAWING NO: 1744002
4. PLC ± -		CUSTOMER DRAWING	SCALE: 7:1
ANGLES ± -			SHEET: 1 OF 1
			REV: B1



RECOMMENDED MOUNTING HOLE PATTERN FOR 1.60 [.063] THICK P.C. BOARD