

# "High Frequency Ceramic Solutions"

Preliminary

## 892 MHz Diplexer

P/N 0892DP15A1940

Detail Specification: 05/13/10

Page 1 of 2

### General Specifications

Part Number	0892DP15A1940
-------------	---------------

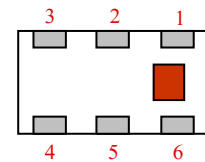
Passband (MHz)	Insertion Loss (dB)	Attenuation I	Isolation (dB)	Return Loss (dB)
824 ~ 960	0.9 max	18 min. @ 1648 ~ 1830 MHz	16 min.	15 min.
		22 min. @ 2472 ~ 2745 MHz		
		15 min. @ 3300 ~ 4000 MHz		
		15 min. @ 5000 ~ 8500 MHz		
1710 ~ 2170	1.0 max	19 min. @ 3420 ~ 3820 MHz	20 min.	13 min.
		20 min. @ 5130 ~ 5730 MHz		
		15 min. @ 6000 ~ 8000 MHz		

Input Power	2 Watts max.
Impedance	50 Ω
Operating Temp	-40 to +85°C
Storage Temp	+5 to +35°C, Humidity 45~75%RH *
Reel Quantity	4000

\* 12 months in vacuum sealed bag and 1 week after opened

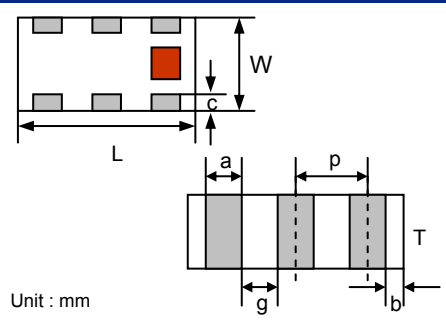
### Terminal Configuration

No.	Function
1	Higher Freq. Port (P3)
2	GND
3	Lower Freq. Port (P2)
4	GND
5	Common Port (P1)
6	GND



### Mechanical Dimensions

	In	mm
L	0.079 ± 0.004	2.00 ± 0.10
W	0.049 ± 0.004	1.25 ± 0.10
T	0.018 ± 0.020	0.45 ± 0.50
a	0.012 ± 0.004	0.30 ± 0.10
b	0.008 ± 0.004	0.20 ± 0.10
c	0.012 +.004/-0.008	0.30 +0.1/-0.2
g	0.014 ± 0.004	0.35 ± 0.10
p	0.026 ± 0.002	0.65 ± 0.05

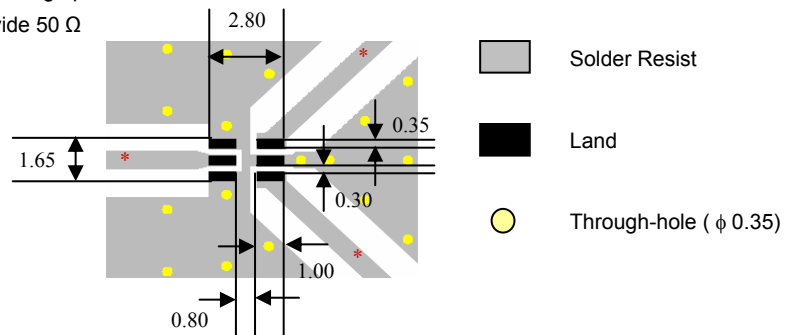


### Mounting Considerations

Mount these devices with brown mark facing up.

\*Line width should be designed to provide 50 Ω impedance matching characteristics.

Units: mm



Johanson Technology, Inc. reserves the right to make design changes without notice.

All sales are subject to Johanson Technology, Inc. terms and conditions.

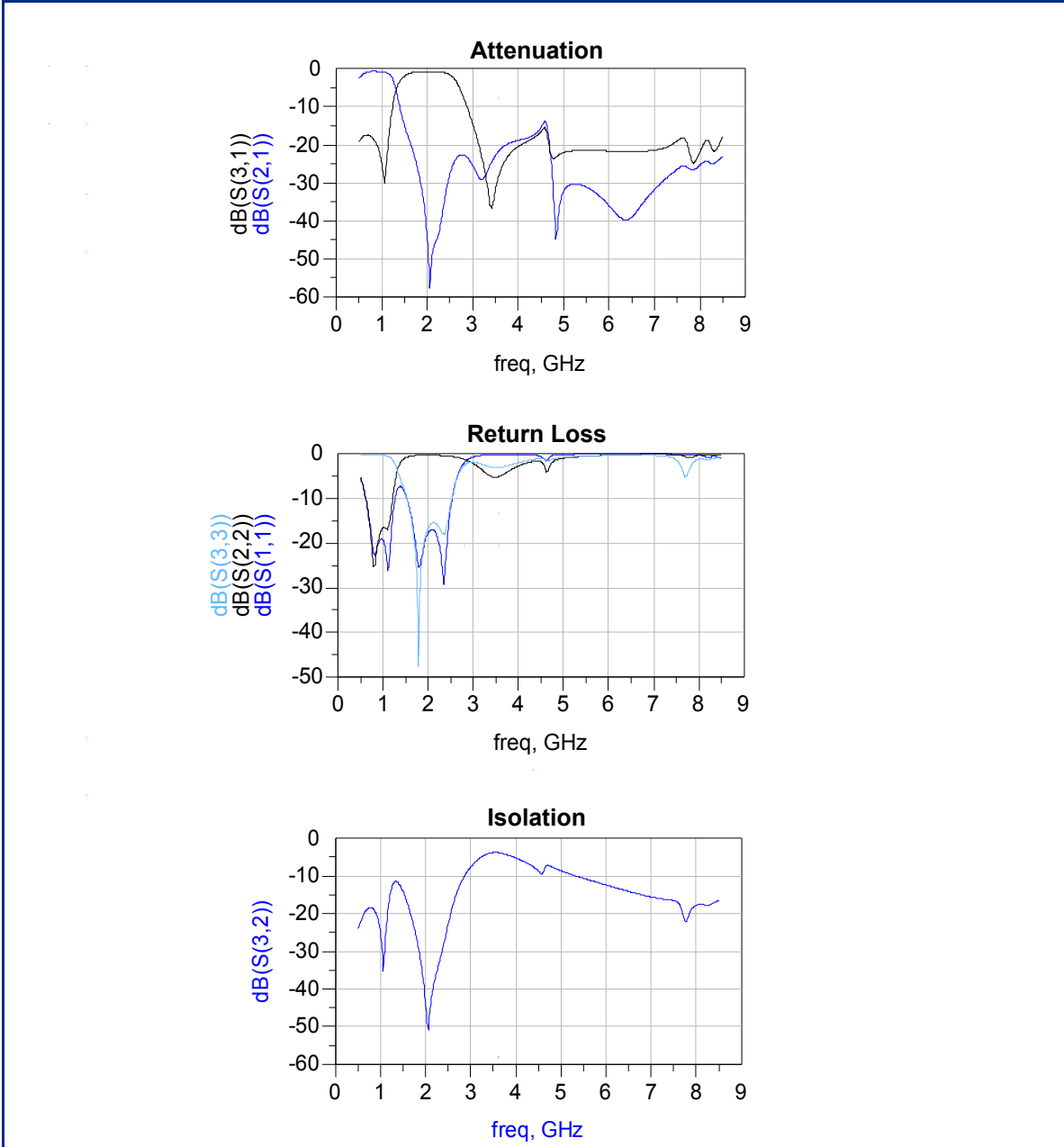


[www.johansontechnology.com](http://www.johansontechnology.com)

4001 Calle Tecate • Camarillo, CA 93012 • TEL 805.389.1166 FAX 805.389.1821

2010 Johanson Technology, Inc. All Rights Reserved

**Typical Electrical Performance (T=25°C)**



Johanson Technology, Inc. reserves the right to make design changes without notice.  
 All sales are subject to Johanson Technology, Inc. terms and conditions.