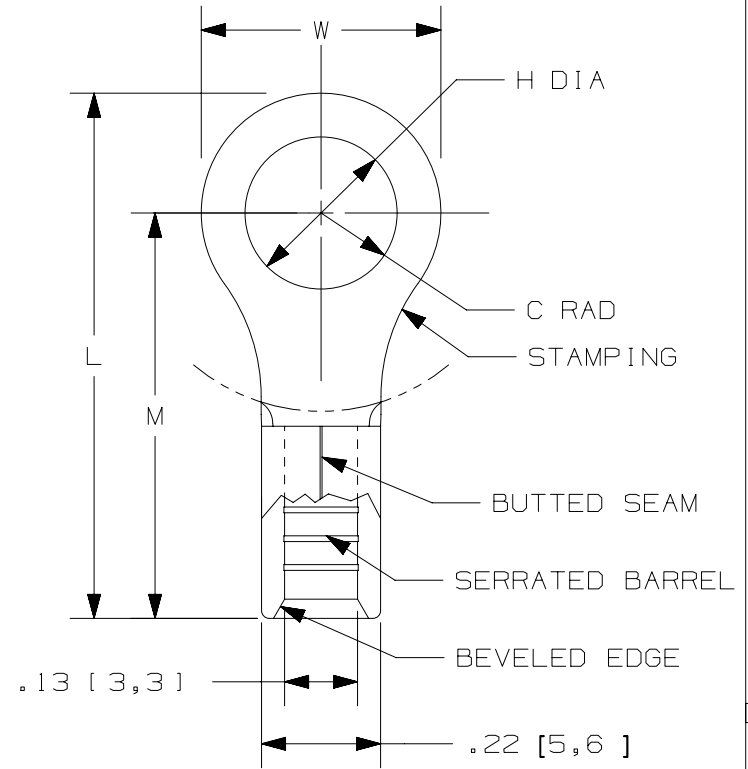


THIS COPY IS PROVIDED ON A RESTRICTED BASIS AND IS NOT TO BE USED IN ANY WAY DETRIMENTAL TO THE INTERESTS OF PANDUIT CORP.

PANDUIT PART #	STUD SIZE		DIMENSIONS in. [mm]				
	ENGLISH	METRIC	L ± .03 [0,76]	W ± .01 [0,25]	C ± .02 [0,51]	M ± .03 [0,76]	H ± .01 [0,25]
E10-6RB	#6	M3	.78 [19,8]	.31 [7,9]	.31 [7,9]	.62 [15,8]	.15 [3,8]
E10-8RB	#8	M4	.78 [19,8]	.31 [7,9]	.31 [7,9]	.62 [15,8]	.17 [4,3]
E10-10RB	#10	M5	.81 [20,6]	.38 [9,7]	.31 [7,9]	.62 [15,8]	.20 [5,1]
E10-14RB	1/4"	M6	.96 [24,4]	.52 [13,2]	.38 [9,7]	.70 [17,8]	.27 [6,9]

NOTES:

- USED FOR:
 - 12-10 AWG [4,0-6,0 mm²] SOLID OR STRANDED COPPER WIRE
 - 302°F [150°C] MAX. TEMP. RATING
 - 2000V MAX VOLTAGE
- MATERIAL:
 - STAMPING: .04" [1,0] THK COPPER, TIN PLATED
- INSTALLATION TOOLS:
 - UL LISTED AND CSA CERTIFIED:
 - CT-100A, CT-200, CT-600-A (CT-570CH)
 - CT-1570, CT-1701, CT-2500 (CT-2570CH)
 - PANDUIT APPROVED: CT-160, CT-260
- WIRE STRIP LENGTH: 9/32" ^{+1/32}₋₀ [7,1mm ^{+0,8}₋₀]
- SEE www.panduit.com FOR PACKAGE QUANTITIES INDICATED BY PART NUMBER SUFFIX
- DIMENSIONS IN BRACKETS ARE METRIC EQUIVALENT



LISTED
587H
E52164



CERTIFIED
LR31212

REV	DATE	BY	CHK	APR	DESCRIPTION	ECN
00	2/18	JHNU	TMR	RGB	RELEASED	00123SH

TITLE STRONGHOLD RING TERMINALS NON-INSULATED, BUTTED SEAM #12-10 AWG		CUSTOMER DRAWING	
ITEM REVISION NAME 00123STC/00		PANDUIT ™	
DATASET FILE NAME 00123STC_DC/00		MATERIAL: SEE NOTES	
UNLESS OTHERWISE SPECIFIED, DIMENSIONAL TOLERANCES ARE: IN [mm] .x ± .1 [2.54] .xxx ± .005 [.13] .xx ± .01 [.25] ANGLES ± 5°		DRAWING NUMBER: SH41188	
DRAWN BY JHNU	DATE 2/18	CHK TMR	SCALE N.T.S.
SHEET 1 OF 1		SIZE A	

D10100DA/12