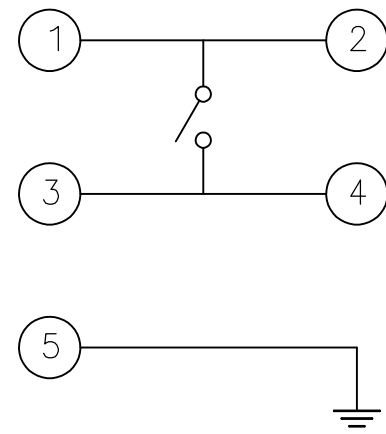
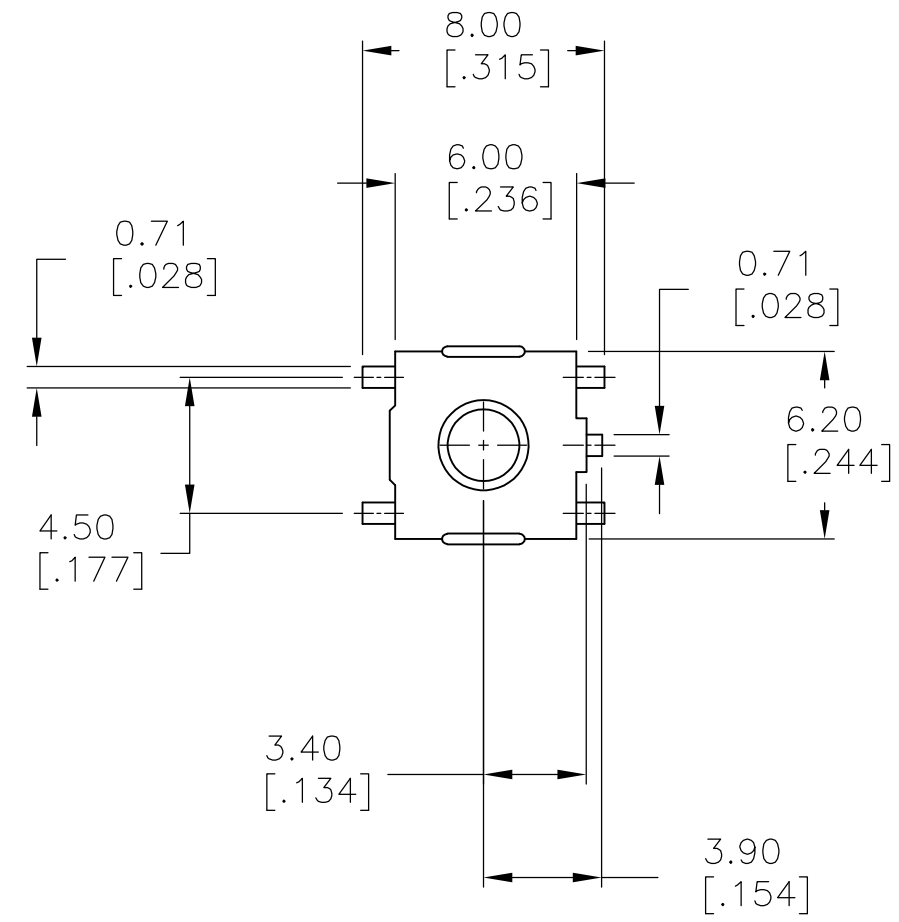
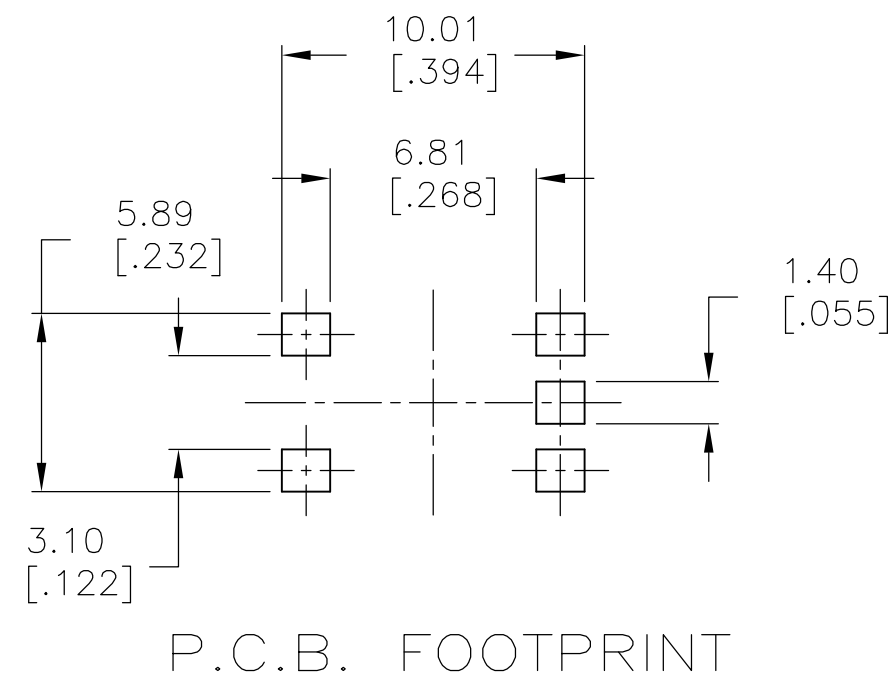
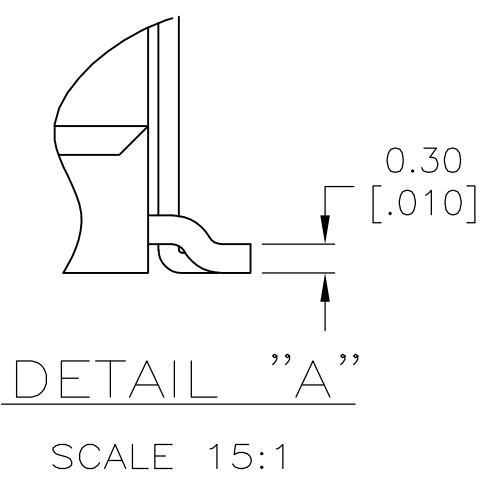
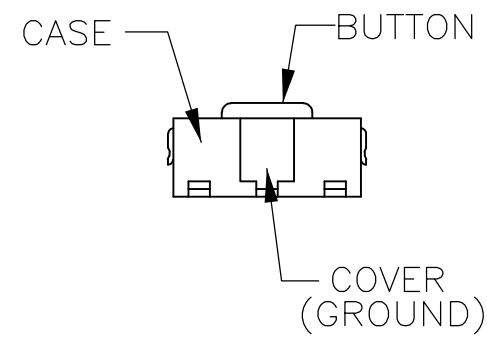
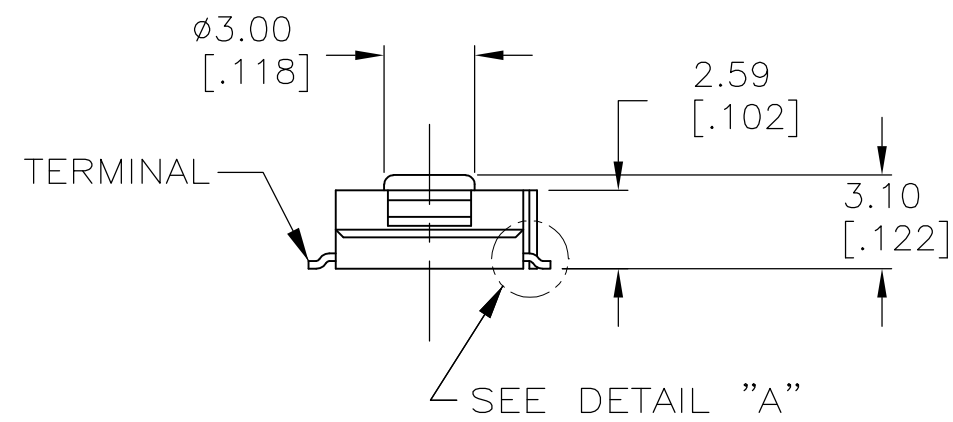


THIS DRAWING IS UNPUBLISHED. RELEASED FOR PUBLICATION  
 © COPYRIGHT - By - ALL RIGHTS RESERVED.

LOC		DIST		REVISIONS			
P	LTR	DESCRIPTION		DATE	DWN	APVD	
AD	00	A4	REVISED PER ECO-14-014370	23SEP2014	NK	RH	



CIRCUIT DIAGRAM



SPECIFICATIONS:

MATERIALS:

CASE, NYLON 46 UL94 V-0, IVORY  
 ACTUATOR, NYLON PA6T UL94V-0, SEE P/N TABLE FOR FINISH  
 COVER, COPPER ALLOY, TIN FINISH  
 TERMINAL/FIXED CONTACT, COPPER ALLOY-SILVER FINISH  
 MOVING CONTACT, STAINLESS STEEL-SILVER FINISH

ELECTRICAL:

MAX CONTACT RATING, 50MILLIAMPER@24V DC  
 MIN CONTACT RATING, 1MICROAMP@1V DC  
 CONTACT RESISTANCE, 100 MILLIOHMS MAX  
 INSULATION RESISTANCE, 100 MEGOHM MIN.  
 DIELECTRIC STRENGTH, 500 V AC FOR 1 MINUTE  
 LIFE EXPECTANCY, 1,000,000 CYCLES

MECHANICAL:

ACTUATION FORCE, SEE P/N TABLE  
 ACTUATION TRAVEL, 0.25 +0.20/-0.10  
 LIFE EXPECTANCY, 1,000,000, (2 CYCLES PER SECOND AND 150% ACTUATION FORCE)

ENVIRONMENTAL:

OPERATING TEMPERATURE, -40 TO +105° C  
 STORAGE TEMPERATURE, -40 TO +105° C  
 SOLDERABILITY, EIA-RS-186-9E, OR MIL-STD-202F  
 RESISTANCE TO SOLDER HEAT, 260° C FOR 10SEC-PER 109-201, CONDITION B  
 1. NO CHANGE IN INITIAL ELECTRICAL AND MECHANICAL CHARACTERISTICS

- ALL MATERIALS AND FINISHES SHALL COMPLY WITH EU DIRECTIVE 2002/95/EC OF 27JAN2003 (ROHS)
- TAPE AND REEL PACKAGING PER EIA-481

1,000,000	PINK	260 +/-50g	12 MM	16 MM	FSM1LPASTR	1977263-4
1,000,000	PINK	260 +/-50g			FSM1LPAS	1977263-3
1,000,000	GREEN	160 +/-50g	12 MM	16 MM	FSM1LPSTR	1977263-2
1,000,000	GREEN	160 +/-50g			FSM1LPS	1977263-1
LIFE CYCLE	ACTUATOR COLOR	ACTUATION FORCE	PITCH	TAPE WIDTH	T&B P/N	TE P/N

THIS DRAWING IS A CONTROLLED DOCUMENT.		DWN	M.BINNER	24JAN08		
		CHK	M.SARVER	24JAN08		
		APVD	M.SARVER	24JAN08		
		PRODUCT SPEC	M.SARVER	24JAN08		
DIMENSIONS: mm [INCHES]		TOLERANCES UNLESS OTHERWISE SPECIFIED:		NAME		
0 PLC ± -		1 PLC ± -		TACTILE SWITCH		
2 PLC ± 0.30[.012]		3 PLC ± -		FSM1LP		
4 PLC ± -		ANGLES ± -		SIZE		
MATERIAL		FINISH		WEIGHT		RESTRICTED TO
-		-		-		-
CUSTOMER DRAWING				SCALE	4:1	SHEET
				A2 00779 C=1977263		1 OF 2
				REV		A4

4

3

2

1

THIS DRAWING IS UNPUBLISHED. RELEASED FOR PUBLICATION  
 © COPYRIGHT - By - ALL RIGHTS RESERVED.

LOC	DIST	REVISIONS			
P	LTR	DESCRIPTION	DATE	DWN	APVD
AD	00	SEE SHEET 1	-	-	-

CARRIER TAPE  
COVER TAPE

DRAWING DIRECTION

REEL  
LABEL

REEL  
COVER TAPE  
CARRIER TAPE  
-THE DIRECTION OF PILOT HOLES-

-THE DIMENSION OF CARRIER TAPE, COVER TAPE AND REEL-

CARRIER TAPE  
COVER TAPE  
REEL  
END TAPE

TRAILER  
NON-PACKED PORTION(4HOLES MIN)  
PACKED PORTION  
LEADER  
NON-PACKED PORTION  
START  
NON-PACKED PORTION(2HOLES MIN)  
300-360mm  
CARRIER TAPE  
COVER TAPE

30.0max  
5.0max

0.5

-END TAPE-

THIS DRAWING IS A CONTROLLED DOCUMENT.		DWN M.BINNER 24JAN08		TE Connectivity		
DIMENSIONS: mm [INCHES]		CHK M.SARVER 24JAN08		NAME TACTILE SWITCH FSM1LP		
TOLERANCES UNLESS OTHERWISE SPECIFIED:		APVD M.SARVER 24JAN08		SIZE A2	CAGE CODE 00779	DRAWING NO C=1977263
0 PLC ± - 1 PLC ± - 2 PLC ± 0.30[.012] 3 PLC ± - 4 PLC ± - ANGLES ± - FINISH -		PRODUCT SPEC APPLICATION SPEC		RESTRICTED TO -		
MATERIAL -	FINISH -	WEIGHT -	CUSTOMER DRAWING	SCALE 4:1	SHEET 2 of 2	

1471-9 (3/11)

1977263