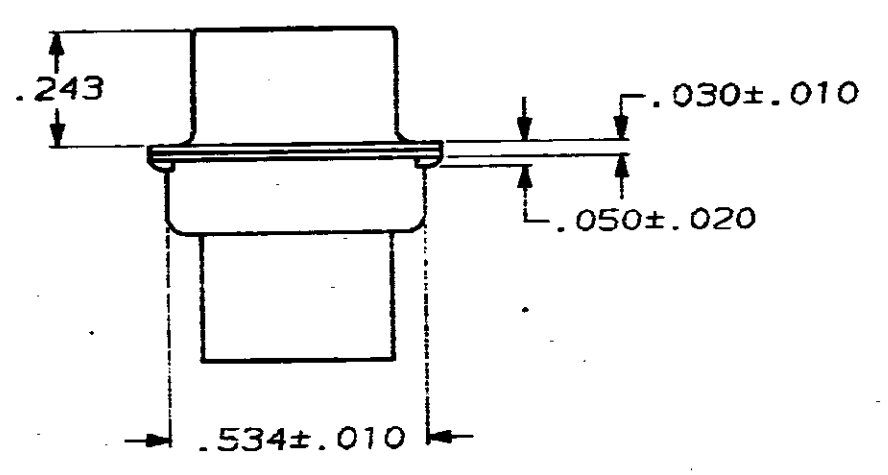
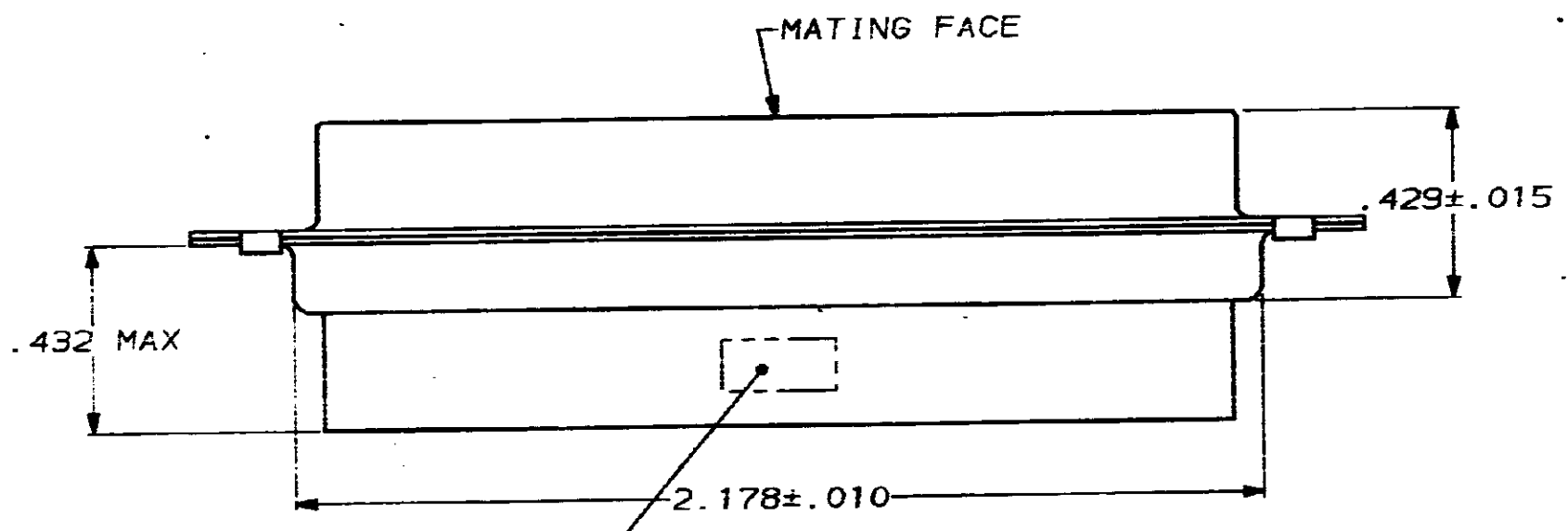
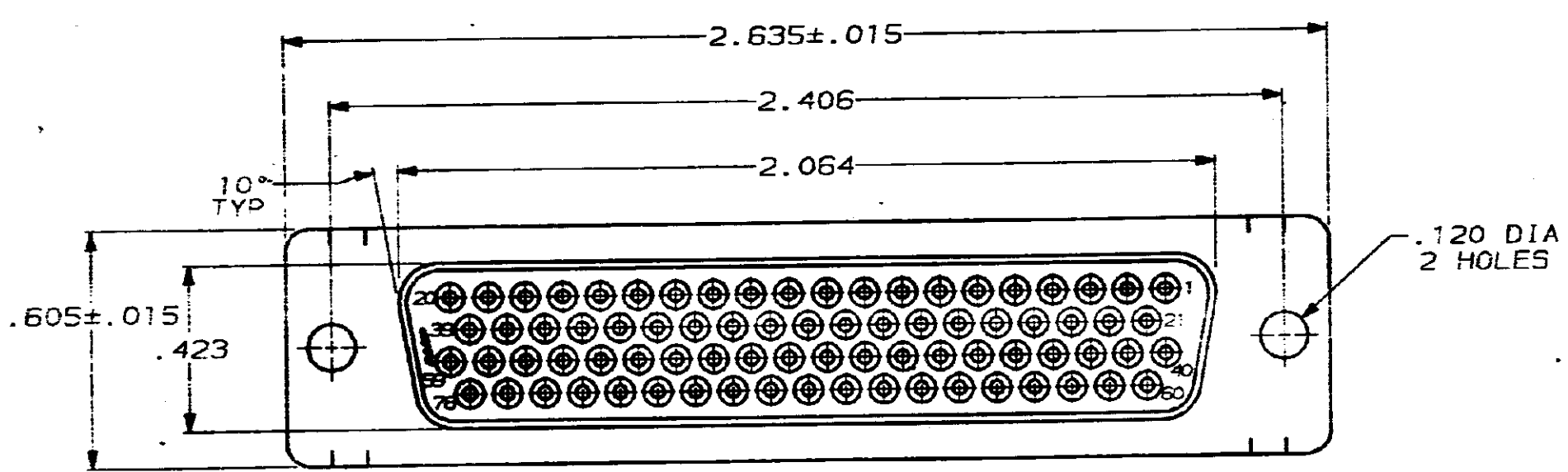


DRAWING MADE IN THIRD ANGLE PROJECTION  
 THIS DRAWING IS UNPUBLISHED. RELEASED FOR PUBLICATION .19  
 © COPYRIGHT 19 BY AMP INCORPORATED. ALL INTERNATIONAL RIGHTS RESERVED.

LOC		DIST		ZONE		LTR		REVISIONS		DATE	APPD
BD	39							0	REL WAS 87-4870-17	-	-



AMP, PART NO & DATE CODE, MARKED IN AREA INDICATED, ON FAR SIDE

- 1. CONNECTOR ACCEPTS SIZE 22 DF SOCKET CONTACTS, RETENTION TINES ARE AN INTEGRAL PART OF INSERT.
- △ FLAME RETARDANT 94V-0 RATED GLASS FILLED NYLON, COLOR: BLACK.
- △ STEEL PER ASTM A109.
- △ TIN PLATED PER MIL-T-10727.

748569-1  
PART NO

DO NOT SCALE PRINT. UNLESS SPECIFIED DIMENSIONS IN INCHES	DR <i>C. Richard</i> 1/12/88	AMP INCORPORATED Harrisburg, Pa. 17105
TOLERANCES ON:	CHK <i>W.C. Kester</i> 1-12-88	
2 PLC DEC = -	APPD <i>S. P. ...</i> 1/11/88	
3 PLC DEC = .005	APPD <i>V. Kumar</i> 1/19/88	
ANGLES ± 2°	PRODUCT SPEC	NAME
MATERIAL	APPLICATION SPEC	RECEPTACLE CONNECTOR, SIZE 5, 78 POSN, AMPLIMITE® HDP-22
MOLDED PARTS: △	WEIGHT	SIZE C
SHELLS: △		FSCM NO 00779
FINISH SHELLS: △		DRAWING NO 748569
		SCALE 3:1
		SHEET 1 OF 1

CUSTOMER DRAWING