



# 912 MHz Cavity Bandpass Filter

## Part Number: AB912B611



**ANATECH ELECTRONICS INC**  
RF & Microwave Filters & Products

### Electrical Specifications

**Center Frequency:** 912.5 MHz  
**Bandwidth:** 19 MHz  
**Pass Band:** 903-922 MHz  
**Passband Ripple:** 1 dB max  
**Insertion loss:** 1.6 dB max  
**Rejection 1:** 40 dB @ 895 MHz  
**Rejection 2:** 40 dB @ 929 MHz  
**CW Power :** 30 Watts

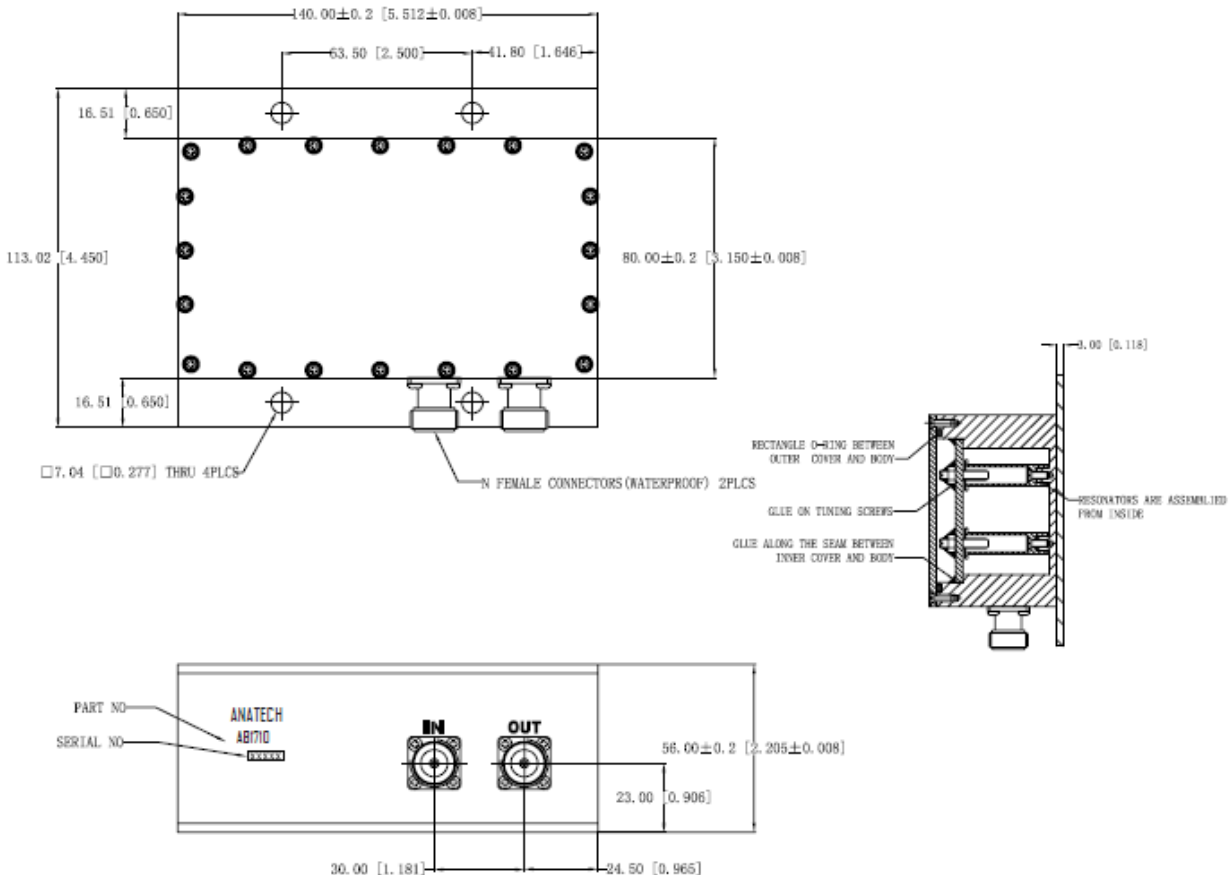
### Mechanical

**Mounting Method:** Threaded Mounting Holes  
**Connector Type:** N Female  
**Dimensions:** 5.12" X 4.45" X 2.20" in

### Environmental

**Operating Temperature:** -45 to +85° C  
**Storage Temperature:** -55 to +95° C  
**Shock:** 20 G. 11ms  
**Vibration:** 20 G. 5 to 200 MHz

### Outline Drawing:



- NOTES:
1. Enclosure is waterproof
  2. Paint: Black epoxy