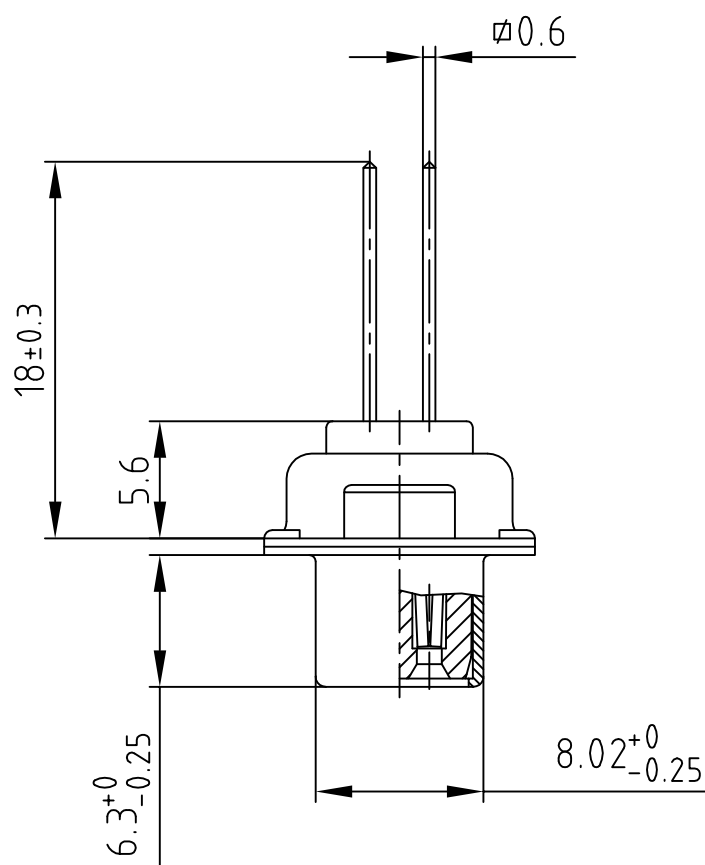
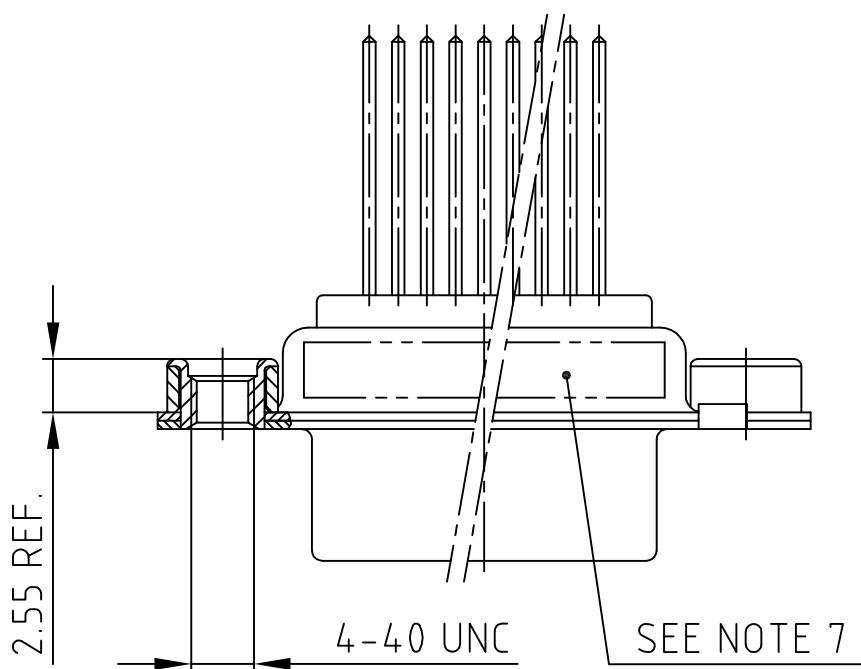
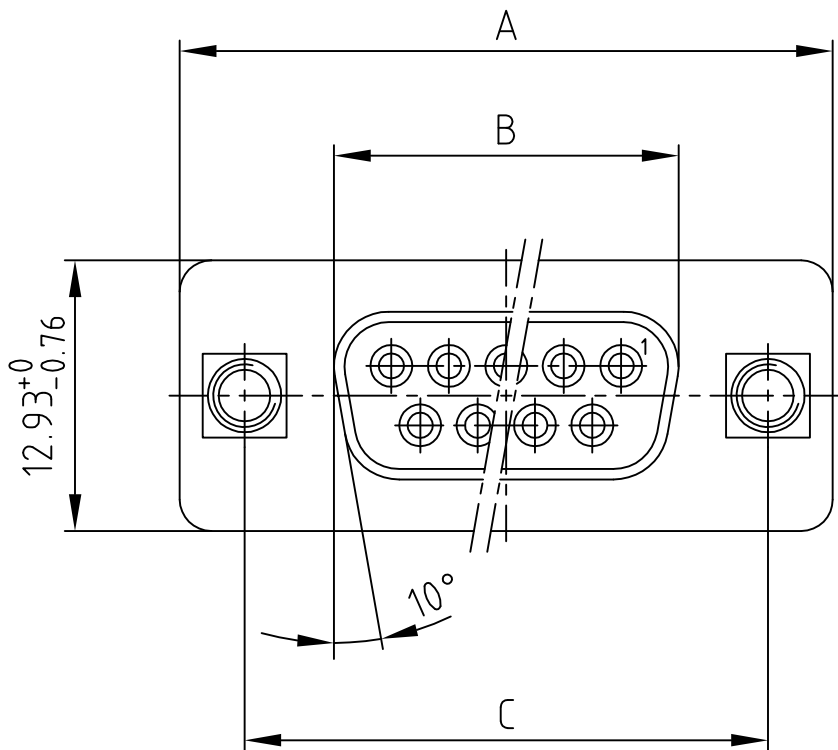


used for: D-SUB

| Part-No. | No. of pos. | A ^{-0.76} | B ^{-0.25} | C |
|------------|-------------|--------------------|--------------------|---|
| 164A10419X | 9 | 31.19 | 16.46 | 25.00 ^{+0.12} _{-0.13} |
| 164A10429X | 15 | 39.52 | 24.79 | 33.30 ^{+0.15} _{-0.1} |
| 164A10439X | 25 | 53.42 | 38.50 | 47.04 ±0.13 |
| 164A10449X | 37 | 69.70 | 54.96 | 63.50 ±0.13 |



NOTES:

- METALSHELLS: STEEL; min. 320µin TIN
- INSULATORS: PBT GF UL 94 V-0; BLACK
- CONTACTS: COPPER ALLOY
PLATING: min. 8µin HARD GOLD over min. 50µin NICKEL
- THREADED INSERT: COPPER ALLOY; min. 200µin TIN over 80µin NICKEL
- COLLAR: COPPER ALLOY; min. 200µin TIN over 80µin NICKEL
- MAXIMUM TORQUE VALUE FOR THREAD: 6 in.LB
- CONNECTOR IS PART MARKED: PART-NO. CONEC ABC

Directive 2002/95/EC RoHS compliant

| | |
|---|--------|
| APPROVAL # FREIGABE # DEBLOCAGE # AUTOR/ZACION # APPROVAL | |
| CUSTOMER APPROVAL DATE: | |
| NAME: | TITLE: |
| COMPANY NAME: | |
| APPROVAL # FREIGABE # DEBLOCAGE # AUTOR/ZACION # APPROVAL | |

THIS DRAWING MAY NOT BE COPIED OR REPRODUCED IN ANY WAY, AND MAY NOT BE PASSED ON TO A THIRD PARTY WITHOUT WRITTEN PERMISSION. OWNERSHIP AND COPYRIGHT OF CONEC GmbH DO NOT ALTER CAD DRAWING BY HAND

| tolerance | | scale: 2:1 | |
|-----------|-------------|-----------------|------|
| material: | | SEE NOTES | |
| 2002 | date | name | |
| drawn | 08.07. | Parei | |
| appd. | 08.07. | E. Mickenbecker | |
| norm | DIN 41652 | | |
| d-old | | | |
| rev. | description | date | name |



| | | | |
|----------|--|--|---|
| title: | | D-SUB FEMALE 9-37pos. WIRE WRAP with threaded insert | |
| dwg no: | | | |
| part no: | | SEE TABLE | |
| | | DIN-A | 4 |
| | | sh: 1/1 | |

F

E

D

C

B

A

F

E

D

C

B

A

4

3

2

1

4

3

2

1