

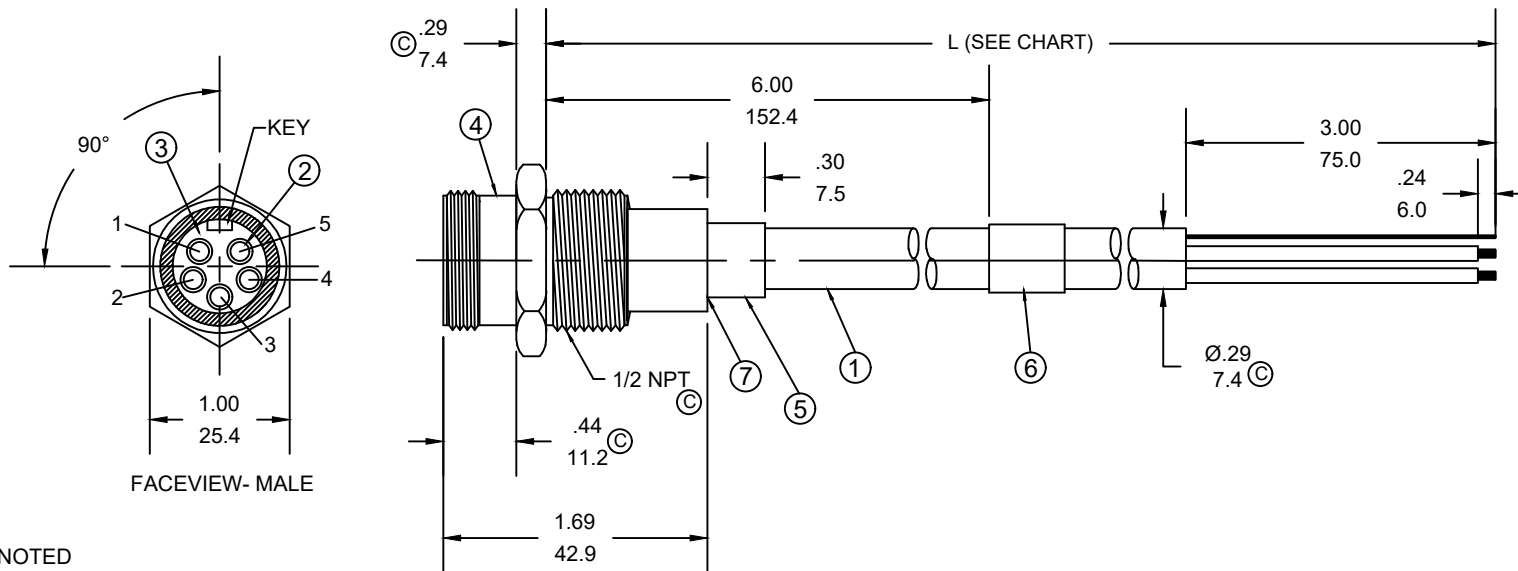
MATERIAL NUMBER	ENGINEERING NUMBER	FINISHED LENGTH
1300390326	DND5100-M003	0.3M [1FT]
1300310041	DND5100-M040	4M [13 FT 1 IN]
1300390578	DND5100-M100	10M [32 FT 9 IN]

PART NO. MATRIX

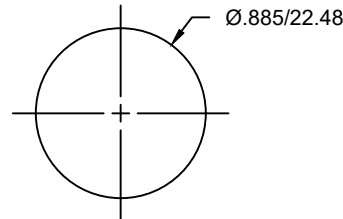
DND5100-M050

FINISHED LENGTH:
M005= 0.5 METER
M050= 5 METER
M100= 10 METER

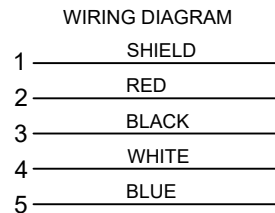
CABLE LENGTH TOLERANCES
<.3M [1FT]: +19mm-0 [+.75in-0]
.3 - .9M [1 - 3FT]: +44.5mm-0 [+1.75in-0]
.9 - 1.8M [3 - 6FT]: +55.6mm-0 [+2.19in-0]
1.8 - 3.7M [6 - 12FT]: +88.9mm-0 [+3.50in-0]
3.7 - 7.3M [12 - 24FT]: +165.1mm-0 [+6.50in-0]
7.3-14.6M [24 - 48FT]: +317.5mm-0 [+12.50in-0]
14.6 - 30.5M [48-100FT]: +622.3mm-0 [+24.50in-0]
OVER 30M [100FT] +2% OF FINISHED LENGTH



- NOTES:
- MATERIAL: AS NOTED
 - FINISH: AS NOTED
 - ELECTRICAL:
VOLTAGE RATING PER IEC 60664: 300V
VOLTAGE RATING PER UL: 300V
CURRENT: 4A
 - PROTECTION: IP67 (WHEN MATED)
 - COUPLING THREAD: 7/8-16.
 - UL LISTED FILE: E152210
CSA CERTIFIED FILE: LR6837
 - ALL DIMENSIONS ARE FOR REFERENCE
UNLESS TOLERANCED OR NOTED OTHERWISE



RECOMMENDED PANEL CUTOUT



7	-	POTTING MATERIAL	EPOXY	-
6	1	LABEL	VINYL	BLACK/YELLOW
5	-	HEATSHRINK	POLYOLEFIN	BLACK
4	1	MC M/MP SHELL	ZINC	NICKEL PLATED
3	1	INSERT MALE 5P A SIZE	TPE	GRAY
2	5	CONTACT MALE	BRASS	GOLD
1	-	CABLE 4/#22	PVC	GRAY
ITEM	QTY.	COMPONENT	MATERIAL	FINISH

FUNCTIONAL SYMBOLS FA=0 FC=0 FE=0	THIS DRAWING CONTAINS INFORMATION THAT IS PROPRIETARY TO MOLEX ELECTRONIC TECHNOLOGIES, LLC AND SHOULD NOT BE USED WITHOUT WRITTEN PERMISSION			
	DIMENSION UNITS	SCALE	CURRENT REV DESC: ITEM# 3 WAS PVC. ADDED CABLE DIA & PANEL CUTOUT. MODIFIED MATERIAL TABLE. DIMS ADDED ZONE C4.REMOVED TEMP RATING	
	INCH/MM	NTS		
	GENERAL TOLERANCES (UNLESS SPECIFIED)			
DIVISIONAL SYMBOLS		mm	INCH	EC NO: 645633
	4 PLACES	±----	±----	DRWN: ABENJAMINLW 2020/09/07
	3 PLACES	±----	±----	CHK'D: RSTONE 2020/09/29
	2 PLACES	±----	±----	APPR: BWOODMAN 2020/10/23
	1 PLACE	±----	±----	INITIAL REVISION:
	0 PLACES	±----	±----	DRWN: KKALICIAK 2015/11/13
ANGULAR TOL ± ---- °		APPR: MIWASIECZKO 2015/12/15		
DRAFT WHERE APPLICABLE MUST REMAIN WITHIN DIMENSIONS		THIRD ANGLE PROJECTION	DRAWING	SERIES
			A-SIZE	130039

		MINI-CHANGE RECEPTACLE 5 POLE, MALE, STRAIGHT, SINGLE KEY, 22 AWG DROP CABLE		
		PRODUCT CUSTOMER DRAWING		
DOCUMENT NUMBER	DOC TYPE	DOC PART	REVISION	
SD-130039-061	PSD	001	C	
MATERIAL NUMBER	CUSTOMER	SHEET NUMBER		
SEE CHART	GENERAL MARKET	1 OF 1		