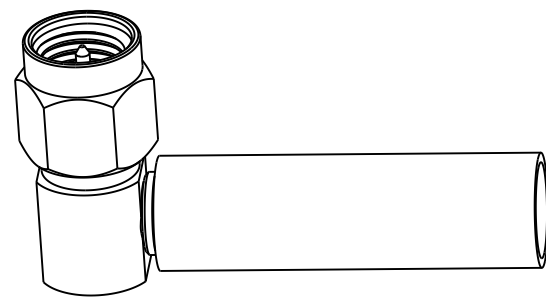
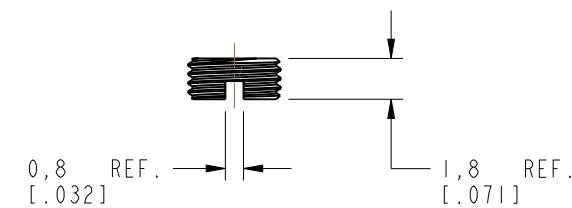
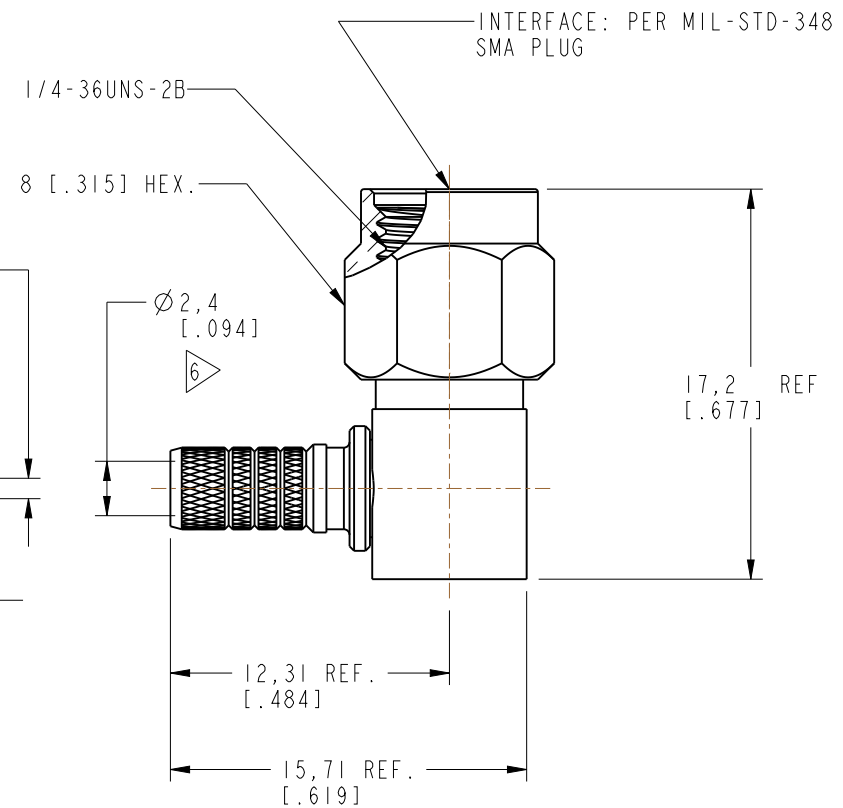
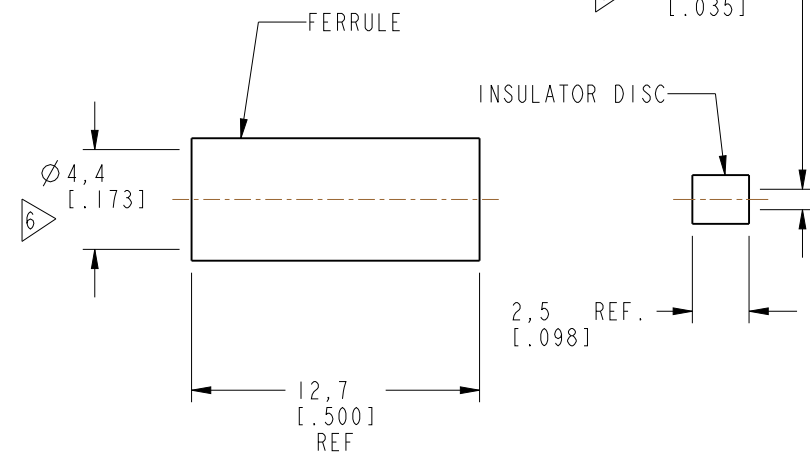
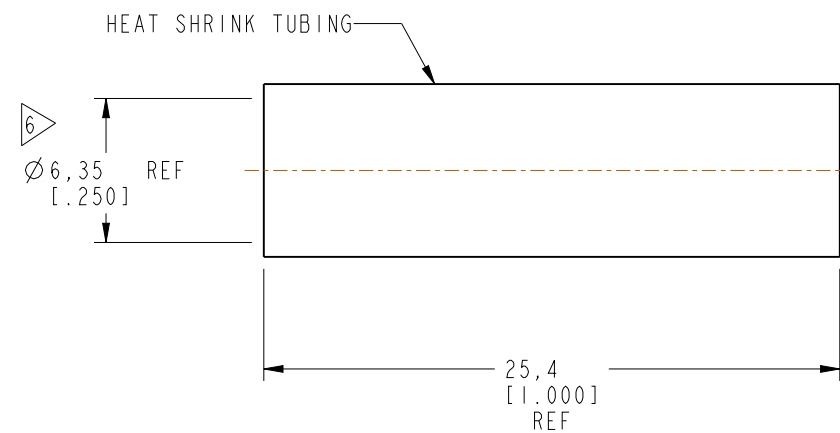


NOTES:

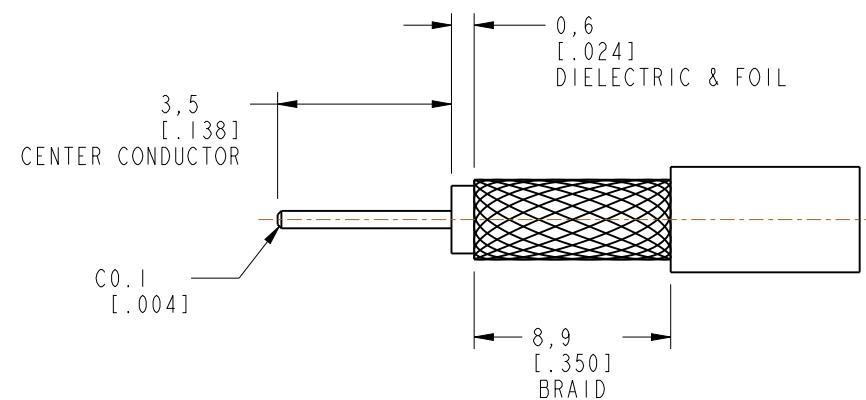
1. MATERIALS AND FINISHES:
 - FERRULE - BRASS, NICKEL PLATING
 - BODY - BRASS, NICKEL PLATING
 - CONTACT - BRASS, GOLD PLATING
 - RETAINER RING - SUS 304, NATURAL
 - GASKET - SILICONE RUBBER, RED
 - INSULATOR - PTFE, NATURAL
 - INSULATOR DISC - PTFE, NATURAL
2. ELECTRICAL:
 - A. IMPEDANCE: 50 OHMS
 - B. FREQUENCY RANGE: DC - 12.4 GHz
 - C. VSWR (RETURN LOSS): 1.20 (-20.83 dB) MAX. DC - 6 GHz
1.28 (-18.22 dB) MAX. 6 - 12 GHz
 - D. DIELECTRIC WITHSTANDING VOLTAGE: 1000 VRMS, MIN.
3. MECHANICAL:
 - A. DURABILITY: 500 CYCLES MIN.
 - B. TEMPERATURE RANGE: -65°C TO +165°C

4. INSTRUCTIONS
 - A. TRIM CABLE AS SHOWN.
 - B. SLIDE HEAT SHRINK TUBE, FERRULE & INSULATOR DISC ONTO CABLE.
 - C. INSERT CABLE, UNTIL IT BOTTOMS, WITH FOIL ENTERING CONNECTOR AND BRAID OVER KNURL.
 - D. CONTACT PIN TO SOLDER.
 - E. HAND TIGHTEN CAP AFTER SOLDERING.
 - F. CRIMPED FERRULE HEX CRIMP SIZE .178"
 - G. APPLY HEAT SHRINK TUBE OVER FERRULE.
5. PACKAGING:
 - A. QUANTITY: SINGLE PACK
 - B. MARKING: BAG TO BE MARKED "AMPHENOL RF, 901-10737 & DATE CODE"
6. CABLE ENTRY DIMENSIONS

REVISIONS				
REV	DESCRIPTION	DATE	ECN	APPR
A	RELEASE TO MFG.	9-APR-21	15641	SH



SCALE 2.000



RECOMMENDED CABLE STRIPPING DIMENSIONS

CUSTOMER OUTLINE DRAWING

ALL OTHER SHEETS ARE FOR INTERNAL USE ONLY

NOTICE: These drawings, specifications, or other data (1) are, and remain the property of Amphenol corp. (2) must be returned upon request; and (3) are confidential and not to be disclosed to any person other than those to whom they are given by Amphenol Corp. The furnishing of these drawings, specifications, or other data by Amphenol Corp., or to any other person to anyone for any purpose is not to be regarded by implication or otherwise in any manner licensing, granting rights to permitting such holder or any other person to manufacture, use or sell any product, process or design, patented or otherwise, that may in any way be related to or disclosed by said drawings, specifications, or other data.

UNLESS OTHERWISE SPECIFIED DIMENSIONS ARE METRIC (INCHES) AND TOLERANCES ARE:
 <0.5mm = ±0.05mm [$<0.020 = \pm 0.002$]
 >0.5 - 6mm = ±0.1mm [$>0.020 - 0.236 = \pm 0.004$]
 >6.00 - 30mm = ±0.2mm [$>0.236 - 1.181 = \pm 0.008$]
 >30.00 - 120mm = ±0.3mm [$>1.181 - 4.725 = \pm 0.012$]

MATERIAL: SEE BOM TABLE
 ENGINEER: E.W.U
 DATE: 29-MAR-21

TITLE: SMA R/A PLUG
 C30 CABLE GROUP
 RTK-031, TFC 3.3mm
 SHEET NO. 2 OF 2
 SCALE: 6.0:1.0

Amphenol RF		SIZE	DRAWING NO. 901-10737	REV A
			ITEM NO. 901-10737	
			PART NO. 901-10737	

THIRD ANGLE PROJ. REFERENCE EAR# 9772

ANGLES = ±1°