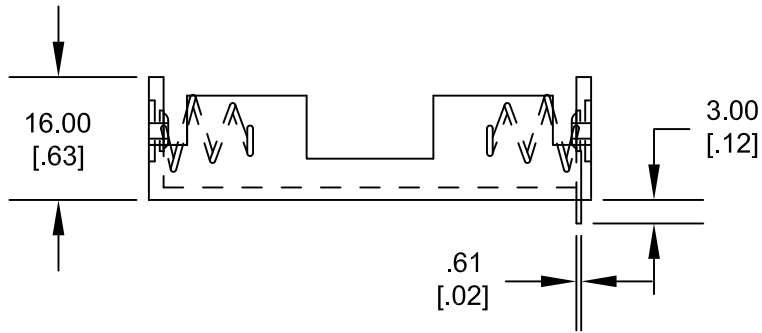
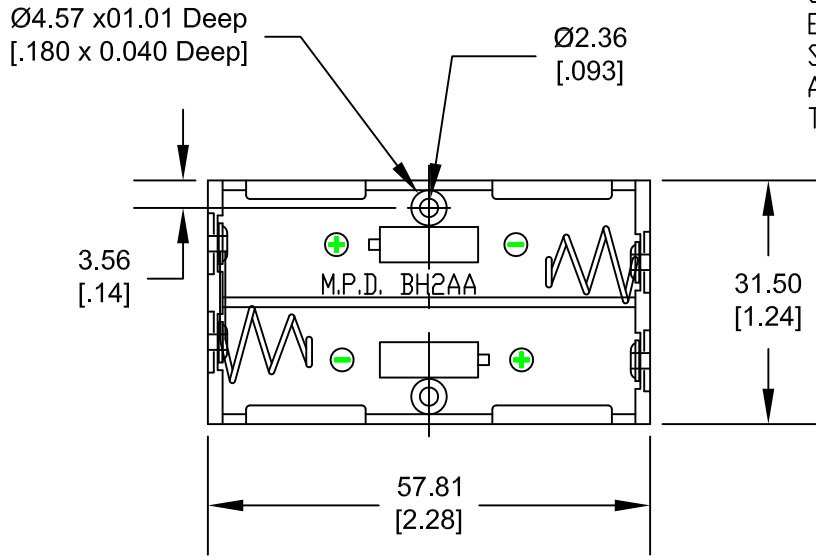
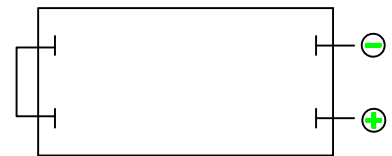
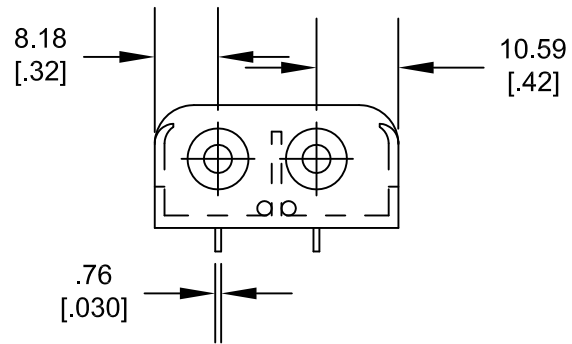
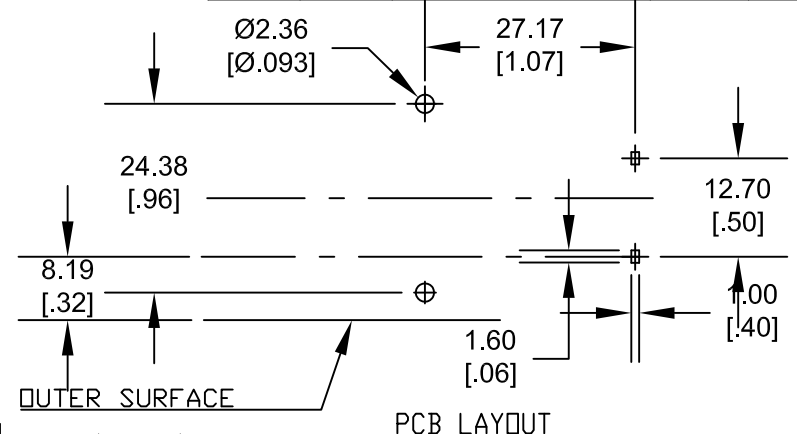


Mounting Instruction:

USE 2-56 MACHINE SCREWS OR
EYELETS 0.089" OD BY 0.15" FLANGE
STIMPSON GS-3 SERIES OR EQUIVALENT
ALSO ADHESIVES AND DOUBLE SIDED
TAPES WORK WELL.




Date	SYM	REVISION RECORD	AUTH	DR.	CK.
1/14/06	B	Added 'ROHS COMPLIANT'	T.B.	B.S.	
10/28/06	C	Added Ø2.36 hole size to PCB layout	T.B.	B.S.	
12/02/11	D	Dim. 57.81 was 57.15 Dim. 3.00 was 12.70 Dim. 16.00 was 15.87	T.B.	B.S.	
10/17/14	E	Updated to ROHS 2 Compliant	T.B.	B.S.	



NOTES:

MATERIAL:
HOUSING: IMPACT RESISTANCE NYLON #6, BLACK, UL 94V-0,
MATERIAL FILE #UL E48285
SPRING: SPRING STEEL, NICKLE PLATED
CONTACTS: SPRING STEEL, NICKLE PLATED
EYELETS: BRASS, NICKLE PLTD.
ROHS 2 COMPLIANT

Tolerance (Inches)	 Memory Protection Devices, Inc 200 Broad Hollow Road, Farmingdale, New York 11735		
Decimal ±.5 (.020)	Scale	Drawn By B.S. Approved By T.B.	
Fractional ± .8 (.030)	Title 2AA BATTERY HOLDER WITH PC PINS		
Angular ± 3°	Date 10/17/14	Drawing Number BH2AA-PC	