

Sensor/Actuator cable - SAC-3P-M12MS/ 2,0-PUR/B-1L-S - 1513350

Please be informed that the data shown in this PDF Document is generated from our Online Catalog. Please find the complete data in the user's documentation. Our General Terms of Use for Downloads are valid (<http://download.phoenixcontact.com>)



Sensor/Actuator cable, 3-position, PUR/PVC, Black RAL 9005, Plug straight M12, A-coded, on Valve connector B (10 mm), with 1 LED, connected with Z diode, Cable length: 2 m



Key commercial data

| | |
|--------------------------------------|------------|
| Packing unit | 1 1 |
| Minimum order quantity | 50 1 |
| Weight per Piece (excluding packing) | 154.61 GRM |
| Custom tariff number | 85444290 |
| Country of origin | Germany |

Technical data

Dimensions

| | |
|-----------------|-----|
| Length of cable | 2 m |
|-----------------|-----|

Ambient conditions

| | |
|----------------------|------|
| Degree of protection | IP67 |
|----------------------|------|

General

| | |
|------------------------------|--------------|
| Rated current at 40°C | 4 A |
| Rated voltage | 24 V |
| Number of positions | 3 |
| Contact resistance | ≤ 5 mΩ |
| Insulation resistance | ≥ 100 MΩ |
| Coding | A - standard |
| Status display | 1 LED |
| Protective circuit/component | Z diode |
| Surge voltage category | II |
| Pollution degree | 3 |

Sensor/Actuator cable - SAC-3P-M12MS/ 2,0-PUR/B-1L-S - 1513350

Technical data

General

| | |
|-----------------------------|-------|
| Insertion/withdrawal cycles | ≥ 100 |
|-----------------------------|-------|

Material

| | |
|---|---|
| Inflammability class according to UL 94 | HB |
| Contact material | CuSn |
| Contact surface material | Ni/Au |
| Contact carrier material | TPU GF |
| Material of grip body | TPU, hardly inflammable, self-extinguishing |
| Valve plug contact material | CuSn |
| Valve plug contact surface material | Ag |
| Valve plug contact insert material | PBT |
| Material housing valve plug | PBT |
| Material, knurls | Zinc die-cast, nickel-plated |
| Sealing material | TPU (Flat gasket valve plug) |

Cable

| | |
|---|--------------------------------------|
| Cable type | PUR/PVC black |
| Cable abbreviation | LiYY11Y-JZ |
| Conductor cross section | 0.75 mm ² |
| AWG signal line | 18 |
| Conductor structure signal line | 42x 0.15 mm |
| Core diameter including insulation | approx. 1.8 mm |
| Thickness, insulation | approx. 0.34 mm (Core insulation) |
| | approx. 0.35 mm (Outer cable sheath) |
| | approx. 0.3 mm (Inner sheath) |
| Wire colors | Black 1, black 2, green/yellow |
| Overall twist | 3 concentrically twisted wires |
| External sheath, color | Black RAL 9005 |
| External cable diameter | 5.90 mm |
| Smallest bending radius, movable installation | 59 mm |
| Outer sheath, material | PUR |
| Material, inner sheath | PVC |
| Material conductor insulation | PVC |
| Conductor material | Bare Cu litz wires |
| Insulation resistance | ≥ 1 MΩ*km |
| Nominal voltage, cable | 300 V |
| Test voltage, cable | 2000 V |

Sensor/Actuator cable - SAC-3P-M12MS/ 2,0-PUR/B-1L-S - 1513350

Classifications

eCl@ss

| | |
|------------|----------|
| eCl@ss 4.0 | 27060306 |
| eCl@ss 4.1 | 27060306 |
| eCl@ss 5.0 | 27061801 |
| eCl@ss 5.1 | 27061801 |
| eCl@ss 6.0 | 27061801 |
| eCl@ss 7.0 | 27061801 |
| eCl@ss 8.0 | 27061801 |

ETIM

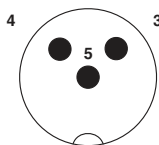
| | |
|----------|----------|
| ETIM 2.0 | EC000830 |
| ETIM 3.0 | EC001855 |
| ETIM 4.0 | EC001855 |
| ETIM 5.0 | EC001855 |

UNSPSC

| | |
|---------------|----------|
| UNSPSC 6.01 | 31251501 |
| UNSPSC 7.0901 | 31251501 |
| UNSPSC 11 | 31251501 |
| UNSPSC 12.01 | 31251501 |
| UNSPSC 13.2 | 31251501 |

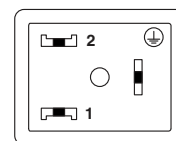
Drawings

Schematic diagram



Pin assignment M12 plug, 3-pos., valve connector

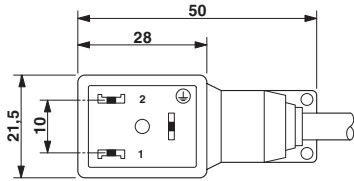
Schematic diagram



Valve connector pin assignment, type B

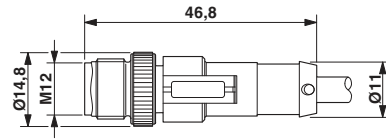
Sensor/Actuator cable - SAC-3P-M12MS/ 2,0-PUR/B-1L-S - 1513350

Dimensioned drawing



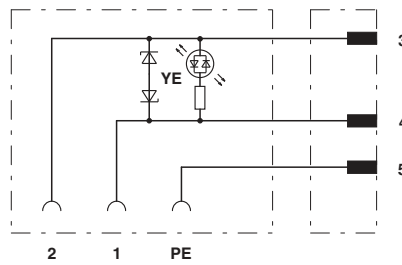
Valve connector, type B

Dimensioned drawing



M12 x 1 plug, straight

Circuit diagram



Contact assignment of M12 plug and valve connector