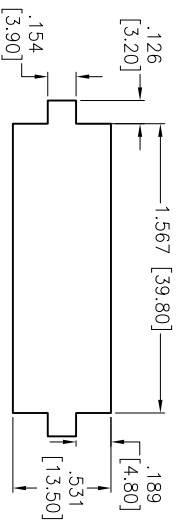
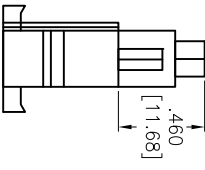
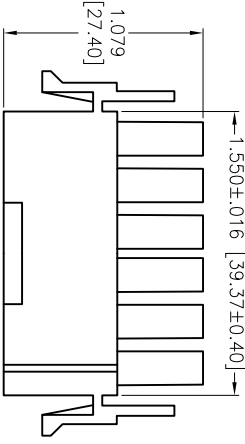
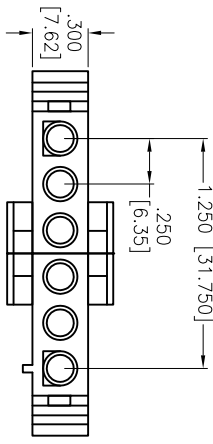


Rev	AWO #	Description	Date	Appr
-		RELEASED	5/8/14	

APPROVED: _____
 DATE: _____ TITLE: _____



RECOMMENDED PANEL CUT

SPECIFICATIONS:

Material:
 Insulator: Nylon 66, rated UL 94V-2
 Insulator color: Natural
Electrical:
 Operating voltage: 600 VAC max
 Current rating: 11 Amps max
 Insulation resistance: 1,000 Mohms min
 Dielectric withstanding voltage: 5,000 VAC for 1 minute
Mechanical:
 Temperature Rating:
 Operating temperature: -55°C to +105°C
 Environmental:
 Lead free, RoHS compliant.



UNLESS OTHERWISE SPECIFIED ALL DIMENSIONS ARE INCHES [MM]	
TOLERANCES: EXCEPT AS NOTED	
INCHES	HOLDS
.X ± .10	ØXX ± .10
.XX ± .020	ØXXX ± .015
.XXX ± .015	ØXXX ± .010
APPROVALS	DATE
DRAWN AY	5/8/14
CHECKED CH	5/8/14
APPROVED	

ADAM TECH
 909 Rahway Avenue, Union, NJ 07083
 Phone: 908-687-5000 Fax: 908-687-5710

TITLE: 6.35MM PITCH CONNECTOR, SINGLE ROW
 HOUSING, MALE, 6 POSITION

REF: S00123T	SIZE X	PART NO. DME-M-06	SCALE: NTS	SHEET 1 OF 1
--------------	--------	-------------------	------------	--------------