

REVISIONS				
EC NO	DATE	REV	DESCRIPTION	CHANGER
CY16-6929	2016.12.15	B	CHG NOTE 2.	DICK
CY17-5069	2017.01.17	C	FOR 797582051~2054,CHG ITEM B FROM UL1007 TO UL1061.	DICK
CY17-5575	2017.05.15	D	FOR 797582051~2054,CHG ITEM B FROM OD=2.35 TO OD=1.95	DICK

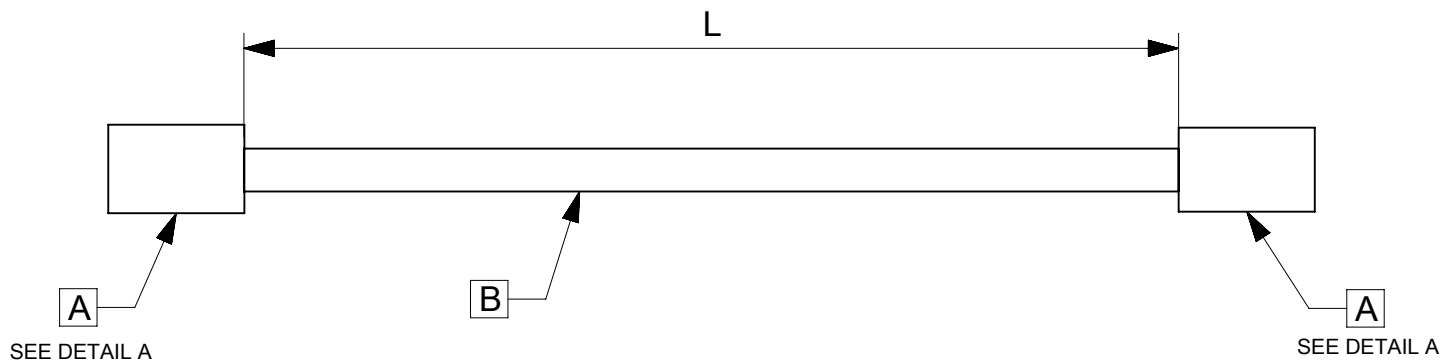
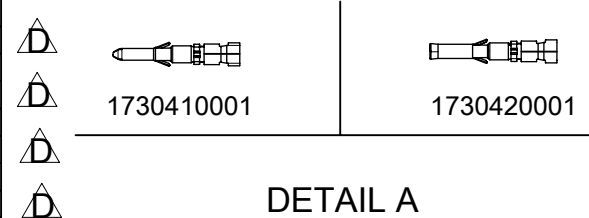


TABLE							
PART NUMBER	L(MM)	TITLE	ITEM	DESCRIPTION	Q`TY	PPQ	DU
797582051	150±5	ValueSeal Crimped Lead 150MM 16#-Male	A	Male terminal 16-18 AWG, valuseal 1730410001	2	100	3000
			B	16AWG;Plated;SR-PVC;BLK;OD1.95mm;UL1061	A/R		
797582052	300±5	ValueSeal Crimped Lead 300MM 16#-Male	A	Male terminal 16-18 AWG, valuseal 1730410001	2	100	3000
			B	16AWG;Plated;SR-PVC;BLK;OD1.95mm;UL1061	A/R		
797582053	150±5	ValueSeal Crimped Lead 150MM 16#-Female	A	Female terminal 16-18 AWG, valuseal 1730420001	2	100	3000
			B	16AWG;Plated;SR-PVC;BLK;OD1.95mm;UL1061	A/R		
797582054	300±5	ValueSeal Crimped Lead 300MM 16#-Female	A	Female terminal 16-18 AWG, valuseal 1730420001	2	100	3000
			B	16AWG;Plated;SR-PVC;BLK;OD1.95mm;UL1061	A/R		
797582055	150±5	ValueSeal Crimped Lead 150MM 18#-Male	A	Male terminal 16-18 AWG, valuseal 1730410001	2	100	3000
			B	18AWG;PLATED;PVC;BK;OD=2.00MM;UL1007	A/R		
797582056	300±5	ValueSeal Crimped Lead 300MM 18#-Male	A	Male terminal 16-18 AWG, valuseal 1730410001	2	100	3000
			B	18AWG;PLATED;PVC;BK;OD=2.00MM;UL1007	A/R		
797582057	150±5	ValueSeal Crimped Lead 150MM 18#-Female	A	Female terminal 16-18 AWG, valuseal 1730420001	2	100	3000
			B	18AWG;PLATED;PVC;BK;OD=2.00MM;UL1007	A/R		
797582058	300±5	ValueSeal Crimped Lead 300MM 18#-Female	A	Female terminal 16-18 AWG, valuseal 1730420001	2	100	3000
			B	18AWG;PLATED;PVC;BK;OD=2.00MM;UL1007	A/R		



**NOTE:**  
 1. THIS PRODUCT MUST MEET 2011/65/EU ROHS COMPLIANCE.  
 此产品需符合 2011/65/EU ROHS环保要求。  
 2. PPQ: THE AMOUNT OF CABLES PER BUNDLE.  
 每捆产品数量。  
 3. DU : THE MINIMUM LINE QUANTITY TO BUY.  
 最小购买数量。  
 4. STICK UL LABEL ON THE OUTSIDE CARTON.  
 外箱上贴UL标签。

THIS DRAWING CONTAINS INFORMATION THAT IS PROPRIETARY TO MOLEX ELECTRONIC TECHNOLOGIES, LLC AND SHOULD NOT BE USED WITHOUT WRITTEN PERMISSION																			
QUALITY SYMBOLS	2017/05/15 2017/05/17 2017/05/17	GENERAL TOLERANCES (UNLESS SPECIFIED)	DIMENSION UNITS	SCALE															
			MM	NTS															
▽ = 0	EC NO: 117048 DRWN: WLXIE CHK'D: DHUANG16 REV APPR: YXZOU	ANGULAR TOL ±	DRWN BY	DATE	SEE TABLE														
▽ = 0			WLXIE	2016/09/08															
▽ = 0	DRAFT WHERE APPLICABLE MUST REMAIN WITHIN DIMENSIONS	4 PLACES ±	CHK'D BY	DATE	PRODUCT CUSTOMER DRAWING														
▽ = 0			DHUANG16	2016/09/13															
▽ = 0	DRAFT WHERE APPLICABLE MUST REMAIN WITHIN DIMENSIONS	3 PLACES ±	APPR BY	DATE	<table border="1"> <tr> <td>SERIES</td> <td>MATERIAL NUMBER</td> <td>CUSTOMER</td> </tr> <tr> <td>201234</td> <td>SEE TABLE</td> <td>GENERAL MARKET</td> </tr> </table>							SERIES	MATERIAL NUMBER	CUSTOMER	201234	SEE TABLE	GENERAL MARKET		
SERIES			MATERIAL NUMBER	CUSTOMER															
201234	SEE TABLE	GENERAL MARKET																	
▽ = 0	DRAFT WHERE APPLICABLE MUST REMAIN WITHIN DIMENSIONS	2 PLACES ±	DRWN BY	DATE	<table border="1"> <tr> <td>DOCUMENT NUMBER</td> <td>DOC TYPE</td> <td>DOC PART</td> <td>SHEET NUMBER</td> </tr> <tr> <td>2012341523</td> <td>PSD</td> <td>000</td> <td>1 OF 1</td> </tr> </table>							DOCUMENT NUMBER	DOC TYPE	DOC PART	SHEET NUMBER	2012341523	PSD	000	1 OF 1
DOCUMENT NUMBER			DOC TYPE	DOC PART								SHEET NUMBER							
2012341523	PSD	000	1 OF 1																
▽ = 0	DRAFT WHERE APPLICABLE MUST REMAIN WITHIN DIMENSIONS	1 PLACE ±	DRAWING SIZE	THIRD ANGLE PROJECTION															
▽ = 0			A4																
▽ = 0	DRAFT WHERE APPLICABLE MUST REMAIN WITHIN DIMENSIONS	0 PLACES ±																	
▽ = 0																			