

# Pre-Configured Network Zone System

## specifications

The pre-configured network zone system shall be validated to accommodate one or two industrial switches with optional expansion modules, and power supply for use in an EtherNet/IP<sup>®</sup> zone architecture/topology. The enclosure shall be UL Type 4/12/4X and IP66 rated. A removable pre-engineered back plate with DIN rails installed shall be incorporated in the enclosure to enable rapid installation of switch, power supply and uninterruptible power supply (UPS). Pre-installed accessory side panels, fiber slack spool, and L rings shall be included for cable management. The door shall be secured with 3mm double bit or slotted latch drive feature. The door shall hinge on the right or left. Class 2 power circuits shall be pre-wired, labeled, and tested. A barrier shall be present to isolate IT personnel from high voltage power circuit.



### Pre-Configured Network Zone System

<b>3-DIN rail, mild steel, UTP copper:</b>	Z23C-S
<b>3-DIN rail, mild steel, STP copper:</b>	Z23C-SS
<b>3-DIN rail, 316 stainless steel, UTP copper:</b>	Z23C-6
<b>3-DIN rail, 316 stainless steel, STP copper:</b>	Z23C-6S
<b>2-DIN rail, mild steel, UTP copper:</b>	Z22C-S
<b>2-DIN rail, mild steel, STP copper:</b>	Z22C-SS
<b>2-DIN rail, 316 stainless steel, UTP copper:</b>	Z22C-6
<b>2-DIN rail, 316 stainless steel, STP copper:</b>	Z22C-6S
<b>1-DIN rail, mild steel, UTP copper:</b>	Z11C-S

### PanZone<sup>®</sup> NEMA 4X Rated Compression Fittings

<b>Cable diameters 0.115" – 0.250":</b>	PZNF1
<b>Cable diameters 0.230" – 0.395":</b>	PZNF2
<b>Cable diameters 0.170" – 0.450":</b>	PZNF3
<b>Drain kit:</b>	PZNDVK

### IndustrialNet<sup>™</sup> TX6<sup>™</sup> Connectors

<b>Category 6 UTP bulkhead connector:</b>	IAEBH6
<b>Category 6 shielded bulkhead connector:</b>	IAEBH6S

### Fiber Uplink Accessories

<b>Surface mount fiber box:</b>	CBXF6BL-AY
<b>LC OptiCam<sup>®</sup> connector:</b>	FLCDMCXAQY
<b>LC connector module:</b>	CMDSAQLCZBL
<b>LC patch 10Gig patch cord:</b>	FX2ERLNLNSNM001
<b>Opti-Core<sup>®</sup> Interlocking Armored Cable:</b>	FOPRX12Y

### DIN Rail Patching Accessories

<b>Mini-Com<sup>®</sup> Copper 8-Port DIN Rail Patch Panel:</b>	CDPP8RG
<b>Mini-Com<sup>®</sup> Fiber 8-Port DIN Rail Patch Panel:</b>	FDME8RG
<b>Mini-Com<sup>®</sup> Single Port DIN Rail Mount Adapter:</b>	CADIN1IG <sup>‡</sup>

### IndustrialNet<sup>™</sup> TX6<sup>™</sup> PLUS Patch Cords

<b>UTP with dust cap:</b>	IUTPSP3BL**
<b>UTP without dust cap:</b>	IUTPSPNC3BL**
<b>Shielded with dust cap:</b>	ISTPSP1MBL***
<b>Shielded without dust cap:</b>	ISTPSPNC1MBL***

<sup>‡</sup>For standard colors other than International Gray, replace IG in part number with BL (Black), EI (Electric Ivory), IW (Off White), or WH (White).  
<sup>\*\*</sup>For lengths other than 3 feet (5, 7, 10, 15, or 20 feet) change the length designation in the part number to the desired length.  
<sup>\*\*\*</sup>For lengths other than 1 meter (2, 3, or 5 meters) change the length designation in the part number to the desired length.

## technical information

<b>Standards:</b>	UL 508A Standard for Industrial Control Panels, UL Type 4/12 or 4X, IP66 Rated
<b>Dimensions:</b>	Z23C with mounting angles: 40.0"H x 24.0"W x 11.7"D (1016mm x 610mm x 297mm) Without mounting angles: 36.0"H x 24.0" W x 11.7"D (914mm x 610mm x 297 mm) Z22C with mounting angles: 28.0"H x 24.0" W x 11.7"D (711mm x 610mm x 297mm) Without mounting angles: 24.0"H x 24.0" W x 11.7"D (610mm x 610mm x 297 mm) Z11C with mounting angles: 18.0"H x 12.0" W x 9.7"D (457mm x 305mm x 247mm)
<b>Color and material:</b>	Enclosures: Gray, 14 gauge cold roll steel or 316 stainless steel Back panels: 14 gauge galvanized steel or 304 stainless steel
<b>Thermal analysis:</b>	Validated to 140°F/60°C
<b>Mounting:</b>	Wall mount with optional outside-mount flange

## key features and benefits

<b>Pre-configured solution</b>	Reduces time required for planning, designing, procurement, and installation, resulting in simpler specification and faster implementation
<b>Patch field and copper/fiber connectivity</b>	Enables troubleshooting of network connections and verification of field terminations
<b>Defined equipment locations and cable routings</b>	Incorporate Panduit developed best practices in connectivity, cable management, wiring, and grounding in a secure enclosure to ensure network reliability
<b>Isolation barrier</b>	Segregates higher line voltage from lower voltage switch for increased safety
<b>Bonding provisions and grounding bar</b>	Ensure path to ground to protect personnel and equipment
<b>Gland plate</b>	Allows quick and easy access to machine ingress points into enclosure
<b>Mounting flexibility</b>	Bolt in place flange mounting for NEMA applications; optional direct mount through back wall installation maintains NEMA rating when supplied sealing washer is used; reversible door for left or right-hand opening
<b>Detailed installation guide</b>	Provides easy, repeatable design instructions assuring consistency and saving time on the job-site

## applications

The Panduit Pre-Configured Network Zone System protects industrial switches using a building block approach, helping to easily define a plant-wide Ethernet architecture. The system is designed to rapidly deploy the network by minimizing

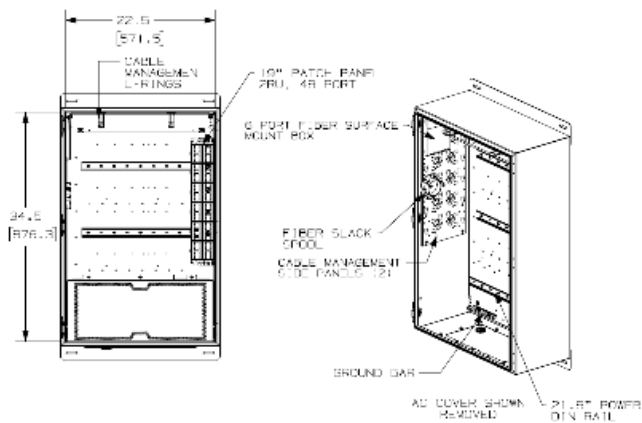
engineering and installation time. With UL Type 4/12/4X and IP 66 ratings, the enclosures provide reliability and high performance, as an integral component of the end-to-end solution for Industrial Networks.

\*EtherNet/IP is a trademark of ODVA.

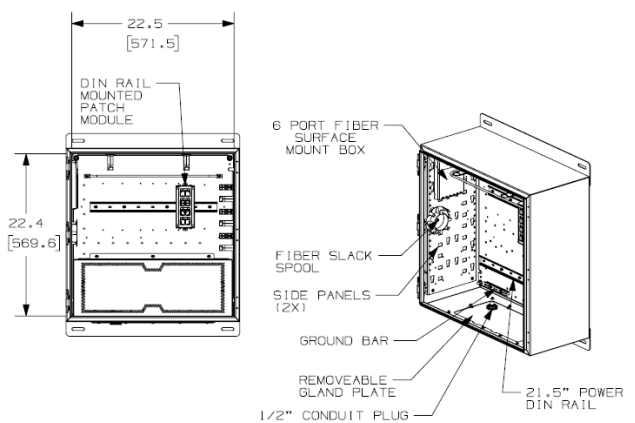
# Pre-Configured Network Zone System

## Pre-Configured Network Zone System Included Accessories

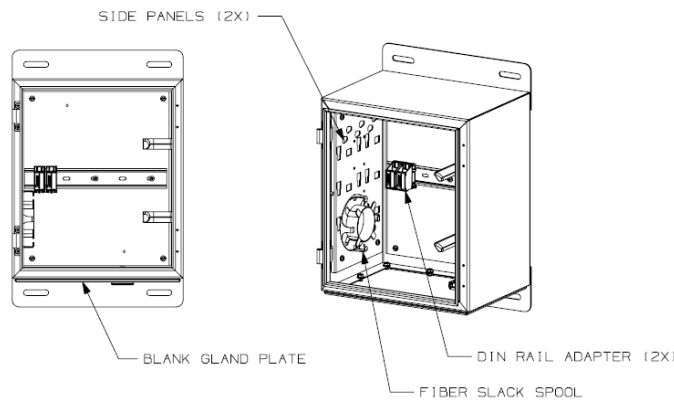
Part Number	Din Rail Mounting	Cable Management	Downlink Patch Field	Copper Downlink Connectivity	Uplink Connectivity	Isolation Barrier	Gland Plate
Z23C	(3) 16.7 inch long DIN rails	7 inch deep strain relief bar and adjustable ring managers	19" 48-port patch panel CPP48WBLY	16 Category 6 copper jacks and 16 Category 6 patch cords - 3ft.	6-port fiber surface mount termination box, 6 LC adapter modules, 4 LC patch cords - 1m, and fiber slacking spool	Barrier to cover high voltage equipment on lower DIN rail	One removable machinable gland plate
Z22C	(2) 16.7 inch long DIN rails	7 inch deep strain relief bar and adjustable ring managers	(1) 8-port patch panel CDPP8RG	8 Category 6 copper jacks and 8 Category 6 patch cords - 3ft.	6-port fiber surface mount termination box, 6 LC adapter modules, 2 LC patch cords - 1m, and fiber slacking spool	Barrier to cover high voltage equipment on lower DIN rail	One removable machinable gland plate
Z11C	(1) 10 inch long DIN rail	Adjustable ring managers	Application dependent	Copper connectivity specified by user	2 DIN rail mount single port Mini-Com® Adapters and fiber slacking spool	Low voltage enclosure	One removable machinable gland plate



Z23C-S



Z22C-S



Z11C-S

Type 4/12 mild steel enclosures with un-shielded jacks and patch cords shown. Type 4/12 mild steel enclosures with shielded connectivity and Type 4X stainless steel enclosures with shielded and un-shielded connectivity are also available, see part numbers on page 1.

Dimensions are in inches. [Dimensions in brackets are metric].

### WORLDWIDE SUBSIDIARIES AND SALES OFFICES

PANDUIT US/CANADA  
Phone: 800.777.3300

PANDUIT EUROPE LTD.  
London, UK  
Phone: 44.20.8601.7200

PANDUIT SINGAPORE PTE. LTD.  
Republic of Singapore  
Phone: 65.6305.7575

PANDUIT JAPAN  
Tokyo, Japan  
Phone: 81.3.6863.6000

PANDUIT LATIN AMERICA  
Guadalajara, Mexico  
Phone: 52.33.3777.6000

PANDUIT AUSTRALIA PTY. LTD.  
Victoria, Australia  
Phone: 61.3.9794.9020

For a copy of Panduit product warranties, log on to [www.panduit.com/warranty](http://www.panduit.com/warranty)

For more information

Visit us at [www.panduit.com](http://www.panduit.com)

Contact Customer Service by email: [cs@panduit.com](mailto:cs@panduit.com)  
or by phone: 800.777.3300

© 2019 Panduit Corp.  
ALL RIGHTS RESERVED.  
RKSP150--WW-ENG  
Replaces RKSP142--WW-ENG  
6/2019