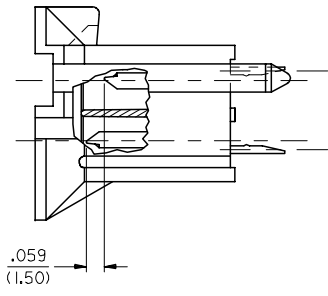
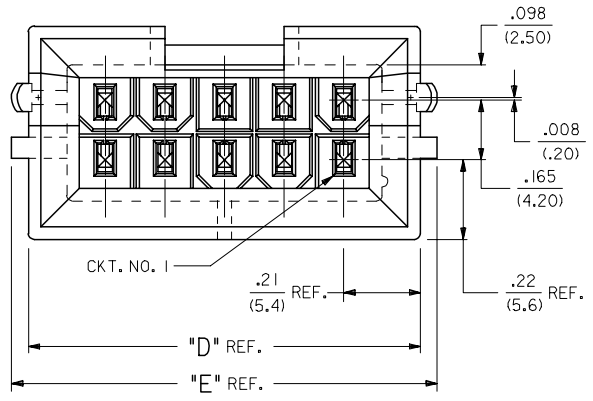
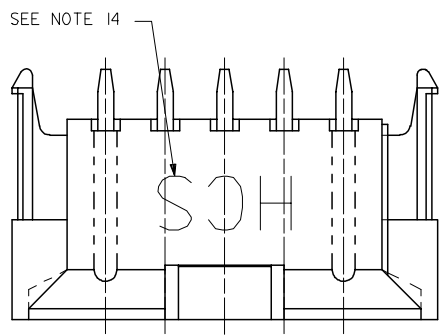
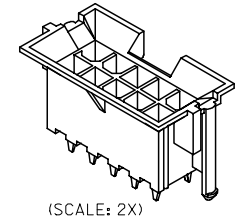


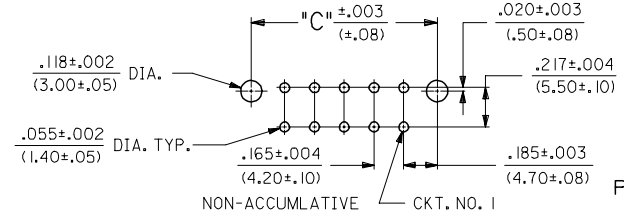
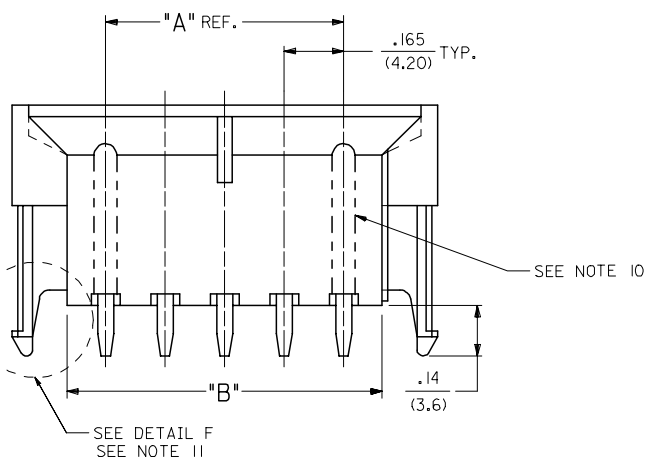
CIRCUIT SIZE	DIM. 'A'	DIM. 'B'	DIM. 'C'	DIM. 'D'	DIM. 'E'
2	—	.21 (5.4)	.370 (9.40)	.425 (10.80)	.520 (13.20)
4	.17 (4.2)	.38 (9.6)	.535 (13.60)	.590 (15.00)	.685 (17.40)
6	.33 (8.4)	.54 (13.8)	.701 (17.80)	.756 (19.20)	.850 (21.60)
8	.50 (12.6)	.71 (18.0)	.866 (22.00)	.921 (23.40)	1.016 (25.80)
10	.66 (16.8)	.87 (22.2)	1.031 (26.20)	1.087 (27.60)	1.181 (30.00)
12	.83 (21.0)	1.04 (26.4)	1.197 (30.40)	1.252 (31.80)	1.346 (34.20)
14	.99 (25.2)	1.20 (30.6)	1.362 (34.60)	1.417 (36.00)	1.512 (38.40)
16	1.16 (29.4)	1.37 (34.8)	1.528 (38.80)	1.583 (40.20)	1.677 (42.60)
18	1.32 (33.6)	1.54 (39.0)	1.693 (43.00)	1.748 (44.40)	1.843 (46.80)
20	1.49 (37.8)	1.70 (43.2)	1.858 (47.20)	1.913 (48.60)	2.008 (51.00)
22	1.65 (42.0)	1.87 (47.4)	2.024 (51.40)	2.079 (52.80)	2.173 (55.20)
24	1.82 (46.2)	2.03 (51.6)	2.189 (55.60)	2.244 (57.00)	2.339 (59.40)



MATE-FIRST/BREAK-LAST DETAIL
(SEE NOTE 12)



(SCALE: 2X)



DETAIL "F"
PEG DESIGN
PRIOR TO 8/11/97

RECOMMENDED HOLE LAYOUT FOR .070/(1.78) MAX. THICK P.C. BOARD

(SEE NOTE 5)
(SCALE: 2X)

6	G
5	G
4	G
3	G
2	D1
1	G

REVISE BORDER EC NO: UCP2005-1986 G1 DRWN: JSCHAFER 2005/03/17 CHKD: 2005/03/21 APPR: YMARGULLI 2005/03/22 REV DESCRIPTION	QUALITY SYMBOLS	GENERAL TOLERANCES (UNLESS SPECIFIED)	DIMENSION STYLE IN/MM	SCALE 1:1	DESIGN UNITS INCH	THIRD ANGLE PROJECTION	
	▽=0 ▽=0	4 PLACES ± --- ± --- 3 PLACES ± --- ± .010 2 PLACES ± 0.25 ± .015 1 PLACE ± 0.38 ± --- ANGULAR ±1/2°	DRAWN BY DATE GEP CHECKED BY DATE RJF APPROVED BY DATE RJF	TITLE	VERTICAL HEADER ASSEMBLY MINI-FIT HCS SERIES	MATERIAL NO.	DOCUMENT NO.
DRAFT WHERE APPLICABLE MUST REMAIN WITHIN DIMENSIONS		SEE CHARTS	SDA-44474-****		1 OF 6		
THIS DRAWING CONTAINS INFORMATION THAT IS PROPRIETARY TO MOLEX INCORPORATED AND SHOULD NOT BE USED WITHOUT WRITTEN PERMISSION							

NOTES:

- 1) HOUSING MAT'L. & OPTIONS:
 1 = NYLON 6/6, U.L. 94V-2, COLOR: NATURAL, WITHOUT DRAIN HOLES.
 2 = NYLON 6/6, U.L. 94V-0, COLOR: NATURAL, WITHOUT DRAIN HOLES.
 3 = NYLON 6/6, U.L. 94V-2, COLOR: NATURAL, WITH DRAIN HOLES.
 4 = NYLON 6/6, U.L. 94V-0, COLOR: NATURAL, WITH DRAIN HOLES.
- 2) TERMINAL MAT'L.: C197 ALLOY.
- 3) 6-24 CKT. PARTS MATE WITH MINI-FIT JR. RECEPT.*5557, H.C.S. VERT. HEADER #44475 AND B.M.I. HEADER #42474. 2 & 4 CKT. PARTS MATE WITH HEADERS ONLY.
- 4) PART ALLOWS FOR UP TO .100/(2.54) MISALIGNMENT WITH MATING RECEPTACLE IN ANY DIRECTION. SEE MATING CONNECTOR DRAWINGS FOR SPECIFIC ALLOWANCES.
- 5) PART IS DESIGNED IN METRIC.
- 6) TERMINAL PLATING:
 *1 = POSTPLATE .000100/(.00254) MIN. BRIGHT TIN OVER .000050/(.00127) MIN. NICKEL.
 2 = POSTPLATE .000100/(.00254) MIN. BRIGHT TIN OVER .000050/(.00127) MIN. NICKEL.
 *THE PRIMARY SHIPPING CARTON WILL BE LABELED *COMPLIANT TO ROHS DIRECTIVE 2002/95/EC AND ELV ANNEX II OF DIRECTIVE 2002/53/EC*. CARTONS WITHOUT THIS LABEL MAY CONTAIN PRODUCT WITH TIN-LEAD PLATING.
- 7) PRODUCT SPECIFICATION AND PROCESSING PARAMETERS: SEE PS-44476-001.
- 8) CONNECTOR ASSEMBLIES ARE NOT TO BE MATED OR UNMATED WHILE CIRCUITS ARE LIVE.
- 9) ITEM NUMBERS PRECEDED BY AN "X" IN THE CHARTS ON THE FOLLOWING SHEETS ARE NOT AVAILABLE.
- 10) OPTIONAL RIBS MAY BE FOUND ON PARTS MANUFACTURED AFTER 08/11/97.
- 11) PARTS MANUFACTURED AFTER 8/15/97 MAY HAVE REVISED LOCK PEG.
- 12) CIRCUITS SHOWN PROVIDE CUSTOM MATE-FIRST/BREAK-LAST FEATURE. SEE CHART ON SHEET SIX FOR ASSEMBLIES WITH ADDITIONAL CUSTOM OPTIONS.
- 13) PACKAGING:
 1 = TRAY PER PK-42440-001.
 2 = TUBE PER PK-40873-015L.
- 14) PARTS PRODUCED AFTER JULY 1, 2004 WILL HAVE "HCS" MARKING INSTEAD OF BLACK STRIPE.

SEE SHEET 1 EC NO: UCP2005-1986 DRAWN: JSCHAFFER 2005/03/17 CHKD: 2005/03/21 APPR: YMARGULLI 2005/03/22 REV DESCRIPTION	QUALITY SYMBOLS	GENERAL TOLERANCES (UNLESS SPECIFIED)	DIMENSION STYLE IN/MM	SCALE 1:1	DESIGN UNITS INCH	THIRD ANGLE PROJECTION	
		mm INCH	DRAWN BY DATE	TITLE			
		4 PLACES ± --- ± ---	GEP	VERTICAL HEADER ASSEMBLY			
		3 PLACES ± --- ± ---	CHECKED BY DATE	MINI-FIT HCS SERIES			
	2 PLACES ± --- ± ---	RJF	MOLEX INCORPORATED				
	1 PLACE ± --- ± ---	APPROVED BY DATE	MATERIAL NO. DOCUMENT NO. SHEET NO.				
	ANGULAR ±1/2°	RJF	SEE CHART SDA-44474-**** 3 OF 6				
	DRAFT WHERE APPLICABLE MUST REMAIN WITHIN DIMENSIONS	THIS DRAWING CONTAINS INFORMATION THAT IS PROPRIETARY TO MOLEX INCORPORATED AND SHOULD NOT BE USED WITHOUT WRITTEN PERMISSION					

	13	12	11	10	9	8	7	6	5	4	3	2	1	
J	PLATING: I (SEE NOTE 6)	PLATING: I (SEE NOTE 6)	PLATING: I (SEE NOTE 6)	PLATING: I (SEE NOTE 6)	PLATING: I (SEE NOTE 6)	PLATING: I (SEE NOTE 6)	PLATING: I (SEE NOTE 6)	PLATING: I (SEE NOTE 6)	PLATING: I (SEE NOTE 6)	PLATING: I (SEE NOTE 6)	PLATING: I (SEE NOTE 6)	PLATING: I (SEE NOTE 6)		
	DRAINS: WITHOUT DRAIN HOLES	DRAINS: WITHOUT DRAIN HOLES	DRAINS: WITHOUT DRAIN HOLES	DRAINS: WITHOUT DRAIN HOLES	DRAINS: WITH DRAIN HOLES	DRAINS: WITH DRAIN HOLES	DRAINS: WITH DRAIN HOLES	DRAINS: WITH DRAIN HOLES	DRAINS: WITHOUT DRAIN HOLES	DRAINS: WITHOUT DRAIN HOLES	DRAINS: WITHOUT DRAIN HOLES	DRAINS: WITHOUT DRAIN HOLES		
	PEGS: WITH PEGS	PEGS: WITH PEGS	PEGS: WITH PEGS	PEGS: WITH PEGS	PEGS: WITH PEGS	PEGS: WITH PEGS	PEGS: WITH PEGS	PEGS: WITH PEGS	PEGS: WITH PEGS	PEGS: WITH PEGS	PEGS: WITH PEGS	PEGS: WITH PEGS		
	MAT'L: 94V-2 [NATURAL]	MAT'L: 94V-0 [NATURAL]	MAT'L: 94V-0 [NATURAL]	MAT'L: 94V-2 [NATURAL]	MAT'L: 94V-2 [NATURAL]	MAT'L: 94V-0 [NATURAL]	MAT'L: 94V-0 [NATURAL]	MAT'L: 94V-0 [NATURAL]	MAT'L: 94V-2 [NATURAL]	MAT'L: 94V-0 [NATURAL]	MAT'L: 94V-0 [NATURAL]	MAT'L: 94V-0 [NATURAL]		
	PACKAGING: TRAY (SEE NOTE 13)	PACKAGING: TRAY (SEE NOTE 13)	PACKAGING: TRAY (SEE NOTE 13)	PACKAGING: TRAY (SEE NOTE 13)	PACKAGING: TRAY (SEE NOTE 13)	PACKAGING: TRAY (SEE NOTE 13)	PACKAGING: TRAY (SEE NOTE 13)	PACKAGING: TRAY (SEE NOTE 13)	PACKAGING: TUBE (SEE NOTE 13)	PACKAGING: TUBE (SEE NOTE 13)	PACKAGING: TUBE (SEE NOTE 13)	PACKAGING: TUBE (SEE NOTE 13)		
I	ITEM NO.	CKTS	ITEM NO.	CKTS	ITEM NO.	CKTS	ITEM NO.	CKTS	ITEM NO.	CKTS	ITEM NO.	CKTS	ITEM NO.	CKTS
	X 44474-0211	2	X 44474-0221	2	X 44474-0231	2	X 44474-0241	2	X -	2	X -	2	X -	2
	44474-0411	4	44474-0421	4	44474-0431	4	44474-0441	4	44474-3001	4	44474-3013	4	44474-3013	4
	X 44474-0611	6	X 44474-0621	6	X 44474-0631	6	X 44474-0641	6	X -	6	X -	6	X -	6
	X 44474-0811	8	X 44474-0821	8	X 44474-0831	8	X 44474-0841	8	X -	8	X -	8	X -	8
	44474-1011	10	44474-1021	10	44474-1031	10	44474-1041	10	44474-3004	10	44474-3016	10	44474-3016	10
	X 44474-1211	12	X 44474-1221	12	X 44474-1231	12	X 44474-1241	12	X -	12	X -	12	X -	12
	44474-1411	14	44474-1421	14	44474-1431	14	44474-1441	14	44474-3006	14	44474-3018	14	44474-3018	14
	X 44474-1611	16	X 44474-1621	16	X 44474-1631	16	X 44474-1641	16	X -	16	X -	16	X -	16
	44474-1811	18	44474-1821	18	44474-1831	18	44474-1841	18	44474-3008	18	44474-3020	18	44474-3020	18
	X 44474-2011	20	X 44474-2021	20	X 44474-2031	20	X 44474-2041	20	X -	20	X -	20	X -	20
	X 44474-2211	22	X 44474-2221	22	X 44474-2231	22	X 44474-2241	22	X -	22	X -	22	X -	22
	44474-2411	24	44474-2421	24	44474-2431	24	44474-2441	24	44474-3011	24	44474-3023	24	44474-3023	24

G	PLATING: I (SEE NOTE 6)	PLATING: I (SEE NOTE 6)	PLATING:	PLATING:	PLATING:	PLATING:						
	DRAINS: WITH DRAIN HOLES	DRAINS: WITH DRAIN HOLES	DRAINS:	DRAINS:	DRAINS:	DRAINS:						
	PEGS: WITH PEGS	PEGS: WITH PEGS	PEGS:	PEGS:	PEGS:	PEGS:						
	MAT'L: 94V-2 [NATURAL]	MAT'L: 94V-0 [NATURAL]	MAT'L:	MAT'L:	MAT'L:	MAT'L:						
	PACKAGING: TUBE (SEE NOTE 13)	PACKAGING: TUBE (SEE NOTE 13)	PACKAGING:	PACKAGING:	PACKAGING:	PACKAGING:						
F	ITEM NO.	CKTS	ITEM NO.	CKTS	ITEM NO.	CKTS	ITEM NO.	CKTS	ITEM NO.	CKTS	ITEM NO.	CKTS
	X -	2	X -	2	-	2	-	2	-	2	-	2
	44474-3025	4	44474-3037	4	-	4	-	4	-	4	-	4
	X -	6	X -	6	-	6	-	6	-	6	-	6
	X -	8	X -	8	-	8	-	8	-	8	-	8
	44474-3028	10	44474-3040	10	-	10	-	10	-	10	-	10
	X -	12	X -	12	-	12	-	12	-	12	-	12
	44474-3030	14	44474-3042	14	-	14	-	14	-	14	-	14
	X -	16	X -	16	-	16	-	16	-	16	-	16
	44474-3032	18	44474-3044	18	-	18	-	18	-	18	-	18
	X -	20	X -	20	-	20	-	20	-	20	-	20
	X -	22	X -	22	-	22	-	22	-	22	-	22
	44474-3035	24	44474-3047	24	-	24	-	24	-	24	-	24

* ITEMS PRECEDED BY "X" ARE NOT AVAILABLE
 ITEMS ON THIS PAGE ARE STANDARD PRODUCT. REFER TO
 SHEET SIX FOR PRODUCT WITH CUSTOM OPTIONS.

SEE SHEET 1 EC NO: UCP2005-1986 G) DRWN: JSCHAFFER 2005/03/17 CHKD: 2005/03/21 APPR: YMARGULLI 2005/03/22 REV DESCRIPTION	QUALITY SYMBOLS	GENERAL TOLERANCES (UNLESS SPECIFIED)	DIMENSION STYLE	SCALE	DESIGN UNITS	THIRD ANGLE PROJECTION	
	▽=0 ▽=0	mm INCH	IN/MM	1:1	INCH		
		4 PLACES ± --- ± --- 3 PLACES ± --- ± --- 2 PLACES ± --- ± --- 1 PLACE ± --- ± ---	DRAWN BY DATE ERH	TITLE	VERTICAL HEADER ASSEMBLY MINI-FIT HCE SERIES		
		ANGULAR ±1/2°	CHECKED BY DATE MB APPROVED BY DATE RE	MOLEX INCORPORATED			
	DRAFT WHERE APPLICABLE MUST REMAIN WITHIN DIMENSIONS	SEE CHART	MATERIAL NO.	DOCUMENT NO.	SHEET NO.		
					4 OF 6		
			THIS DRAWING CONTAINS INFORMATION THAT IS PROPRIETARY TO MOLEX INCORPORATED AND SHOULD NOT BE USED WITHOUT WRITTEN PERMISSION				