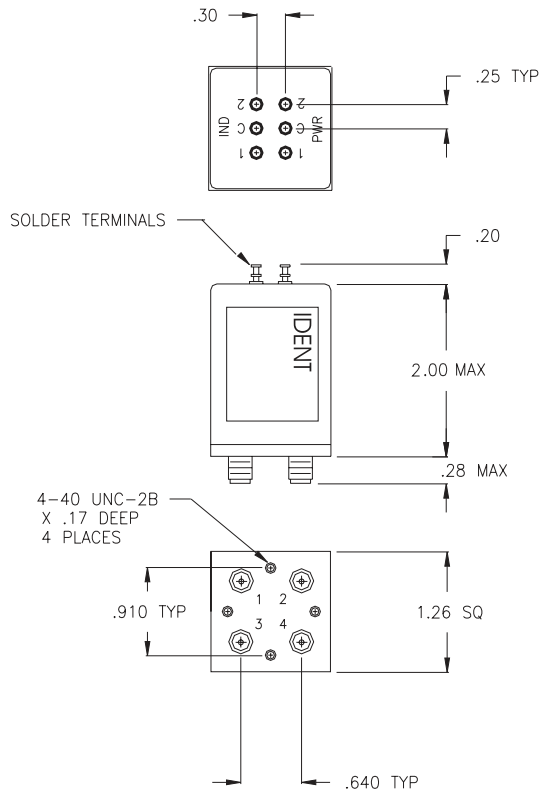


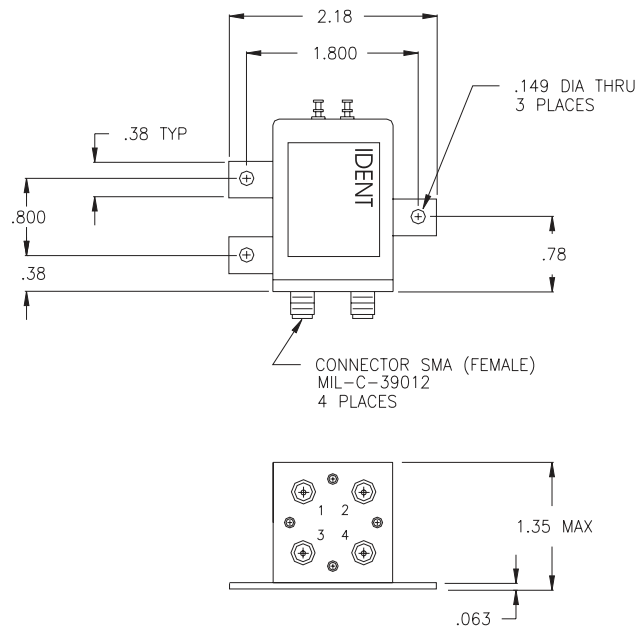
L1 SERIES DPDT (TRANSFER) DC - 26.5 GHz



FREQUENCY: GHz	DC - 2.0	2.0 - 4.0	4.0 - 8.0	8.0 - 12.4	12.4 - 18.0	18.0 - 26.5
VSWR (MAX.)	1.20:1	1.25:1	1.30:1	1.40:1	1.50:1	1.65:1
INSERTION LOSS (MAX.)	0.20	0.25	0.30	0.40	0.50	0.70
ISOLATION (MIN.)	90	80	80	70	60	50
IMPEDANCE	50 Ohms					
MECHANICAL						
CONTACT	BREAK BEFORE MAKE					
ACTUATOR	FAILSAFE, LATCHING, MOMENTARY					
SWITCHING SPEED	20 mSEC MAX.					
ELECTRICAL						
ACTUATOR VOLTAGE	28.0, 12.0, 15.0, 24.0 Vdc					
ACTUATOR CURRENT	CONTACT CEI					
POWER HANDLING	200 WCW @ 1.0 GHz (STANDARD) 300 WCW @ 1.0 GHz (OPT. /P)					
ENVIRONMENTAL						
OPERATING TEMP	-40 DEG. C TO 85 DEG. C (STANDARD) -54 DEG. C TO 90 DEG. C (OPT. /MS)					
SHOCK	50 G's (SAWTOOTH)					
RANDOM VIBRATION	15 G's rms (NON-OPERATING)					
LIFE	1,000,000 CYCLES					
FINISH						
RF CAVITY	ALUMINUM ELECTROLESS NICKEL PLATED PER MIL-C-26074, CLASS 4 (EXCEPT LOW OR ULTRA LOW IM MODELS)					
ENCLOSURE	ALUMINUM, BLUE OR BLACK					
CONTACT	BERYLLIUM COPPER, GOLD PLATED PER MIL-G-45204					
CONNECTOR SHELL	CRES, PASSIVATED PER QQ-P-35 OR BRASS, ELECTROLESS NICKEL PLATED PER MIL-C-26074					
NOTE	FINISH MAY VARY FOR /MS VERSION					
AVAILABLE OPTIONS						
INDICATOR CIRCUITRY	CUT OFF POWER CIRCUIT					
SUPPRESSION DIODE	D'SUB MINIATURE SERIES					
TTL LOGIC	MS CONNECTOR OR EQUIV. (MIL-SPEC)					
LOW, ULTRA LOW, AND SUPERIOR INTERMODULATION (IM)						

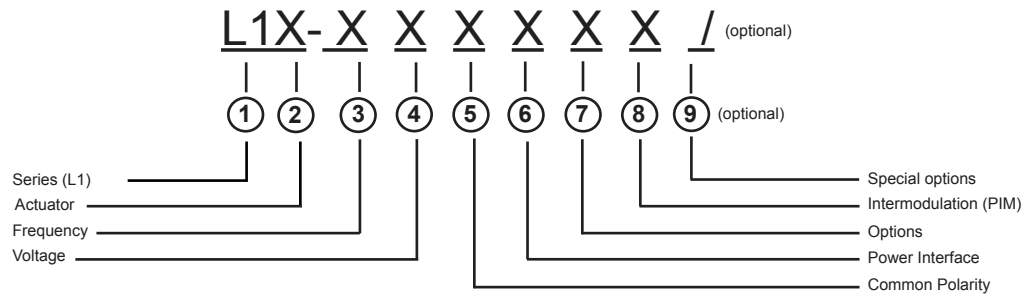


NOTE: REFERENCE FOR DIMENSIONS ONLY.
EACH MODEL NUMBER WILLHAVE A UNIQUE SCHEMATIC.
ALSO AVAILABLE WITH A D'SUB, MICRO D'SUB OR MS SERIES CONNECTOR.



ALSO AVAILABLE WITH D'SUB
OR MS3112E SERIES CONNECTOR

L1 SERIES PART NUMBER & ORDERING INFORMATION

**1 - Switch Series**

L1 DPDT TRANSFER SMA

2 - Actuator

F	FAILSAFE	Y	OTHER (SPECIFY)
G	FAILSAFE WITH SUPPRESSION DIODE		
H	FAILSAFE WITH INDICATOR		
J	FAILSAFE WITH SUPPRESSION DIODE AND INDICATOR		
L	LATCHING		
M	LATCHING WITH SUPPRESSION DIODE		
N	LATCHING WITH INDICATOR		
P	LATCHING WITH SUPPRESSION DIODE AND INDICATOR		

3 - Frequency Bandwidth

1	DC - 13.0 GHz	6	DC - 6.0 GHz
2	DC - 2.0 GHz	7	DC - 26.5 GHz
3	DC - 12.4 GHz	8	DC - 20.0 GHz
4	DC - 4.0 GHz	0	OTHER (SPECIFY)
5	DC - 18.0 GHz		

4 - Voltage

1	10 - 14 Vdc (12.0 NOMINAL)	4	26 - 30 Vdc (28.0 NOMINAL)
2	13 - 17 Vdc (15.0 NOMINAL)	5	OTHER
3	22 - 26 Vdc (24.0 NOMINAL)	0	NOT REQUIRED

5 - Common Polarity

1	POSITIVE (+) COMMON
2	NEGATIVE (-) OR RETURN Vdc COMMON
0	NOT REQUIRED

6 - Power Interface

1	SOLDER TERMINAL (TOP OF SWITCH)	5	D' SUB MINIATURE SERIES (TOP OF SWITCH)
3	CONN MS3112E-XX-XXP OR EQUIV. (TOP OF SWITCH)	8	OTHER

7 - Options

1	CUT OFF POWER CIRCUIT (LATCHING ONLY)	8	OTHER (SPECIFY)
2	TTL LOGIC	9	CUSTOM (ORDER)
3	CUT OFF PWR CIRCUIT & TTL LOGIC (LATCHING ONLY)	0	NO OTHER OPTIONS REQUIRED
4	BCD TTL DECODER		

8 - Intermodulation

7	LOW PASSIVE INTERMODULATION	9	ULTRA LOW PASSIVE INTERMODULATION
8	SUPERIOR PASSIVE INTERMODULATION	0	STANDARD SWITCH

9 - Special Options (optional - leave blank if not required)

/P	HIGH TEMP, HIGH POWER CONNECTOR
/MS	EXTENDED TEMP RANGE -54 DEG C TO + 90 DEG
/MSP	HIGH TEMP, HIGH POWER CONNECTOR AND EXTENDED TEMP RANGE