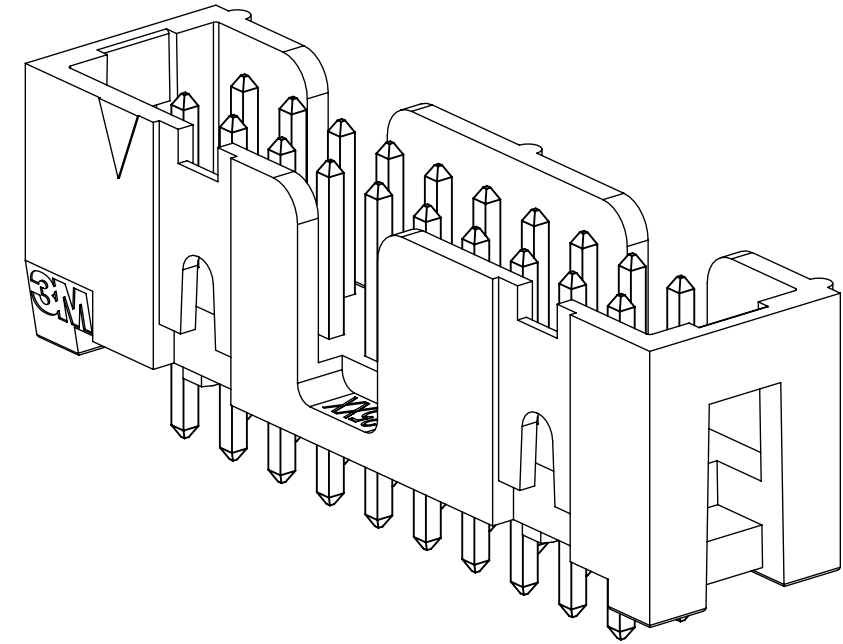


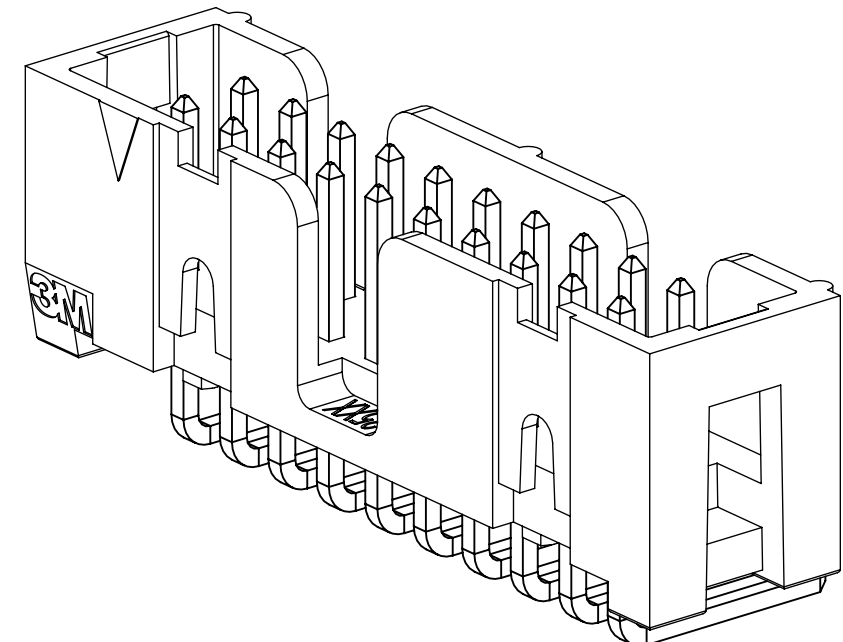
3M™ FOUR-WALL HEADER, 2500 SERIES
 .100" X .100" LOW PROFILE, SURFACE MOUNT, STRAIGHT AND RIGHT ANGLE THROUGH-HOLE

- * LOW PROFILE, SPACE SAVING DESIGN.
- * CENTER SLOT POLARIZATION PREVENTS MIS-INSERTIONS AND REDUCES INSERTION TIME.
- * DUAL SLOT POLARIZATION MEANS BROADER COMPATIBILITY WITH COMPETITIVE POLARIZATION DESIGNS (NOT AVAILABLE ON 6, 8 OR 10 POSITIONS).
- * OPTIONAL RETAINER CLIP FOR LOCKING SOCKETS IN PLACE AND INCREASING CONNECTION RELIABILITY IN VIBRATION-PRONE ENVIRONMENTS.
- * HIGH TEMPERATURE INSULATOR SUITABLE FOR "NO LEAD" SOLDERING OPERATIONS.
- * THROUGH HOLE VERSION SUITABLE FOR REFLOW SOLDERING USING "PASTE IN HOLE" TECHNIQUES.
- * EXPOSED SOLDER TAILS (ON RIGHT ANGLE VERSION) PROVIDE EASE OF CLEANING AND REDUCED REPAIR COST.
- * STRAIGHT SURFACE MOUNT VERSION AVAILABLE.

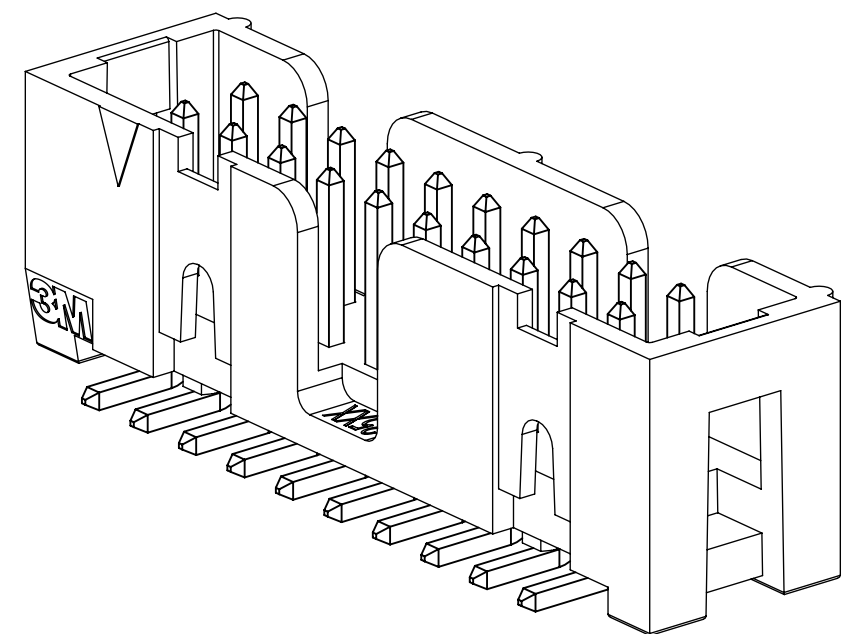
- NOTES**
- REGULATORY INFORMATION: VISIT 3M.com/regs
 - IN THE EVENT OF CONFLICT BETWEEN THIS DATA AND THAT CONTAINED IN THE PRODUCT SPECIFICATION, THE PRODUCT SPECIFICATION TAKES PRECEDENT.
 - NOTCHES A & C WILL ACCOMODATE 3M POLARIZING KEY: N3518.
 - CONTACT TAILS .0245 (.622) WIRE WITH .0075 (.191) CORNER RADIUS AND .028 (.072) DIAGONAL.
 - SOLDER STANDOFFS FACILITATE .01 (.3) CLEARANCE ABOVE BOARD FOR REFLOW SOLDERING.



X25XX-60XX
STRAIGHT VERSION



X25XX-50XX
RIGHT ANGLE VERSION



X25XX-6V0C
SURFACE MOUNT VERSION

2 PHYSICAL :

INSULATOR:
 MATERIAL: HIGH TEMPERATURE GLASS FILLED POLYESTER (PCT)
 FLAMMABILITY: UL94V-0
 COLOR: BLACK
 CONTACT:
 MATERIAL: COPPER ALLOY
 PLATING:
 UNDER PLATING: NICKEL UNDERPLATE (SEE ORDERING INFORMATION)
 WIPING AREA: GOLD (SEE ORDERING INFORMATION)
 SOLDER TAILS: MATTE TIN (SEE ORDERING INFORMATION)
 MARKINGS: 3M LOGO, PART IDENTIFICATION NUMBER AND ORIENTATION TRIANGLE

2 ELECTRICAL :

CURRENT RATING: 5.00A, 1 CONTACT POWERED
 3.00A, 6 CONTACTS POWERED
 1.75A, ALL CONTACTS POWERED
 RATING CONDITIONS: EIA-364-070 METHOD 2, 30°C MAXIMUM TEMPERATURE RISE, 20% DERATED. REFERENCE APPROPRIATE 3M PRODUCT SPECIFICATION FOR DETAILED CURRENT DERATING CURVES.
 INSULATION RESISTANCE: >1 X 10⁹Ω AT 500 V_{DC}
 WITHSTANDING VOLTAGE: 1,000V_{RMS} AT SEA LEVEL

2 ENVIRONMENTAL :

TEMPERATURE RATING: -55°C TO 105°C
 PROCESS RATING: 260°C, PER J-STD-020C, SINGLE PASS
 MOISTURE SENSITIVITY LEVEL: 1 (PER J-STD-020C)

DIMENSIONS: INCHES [MM]
 [MM] IS REF. ONLY

| REV | ECO | ISSUE DATE AND DESCRIPTION | DRFT | CHKD |
|-----|---------|--|------|------|
| S | 0100884 | NOV 03,2021 CHANGED LATCH AND P/N | LDS | FJR |
| R | 97909 | JUN 22,2021 REVISED ORDERING INFO | JNC | SAN |
| P | 89702 | JUL 08,2020 REVISE DRAWING PER NEW HEADER MODEL | JNC | SN |
| N | 68908 | AUG 02,2016 REVISE DIM ON SHT2 & CLIP CHART ON SHT5 | JNC | SC |
| M | 56068 | AUG 11,2014 REVISED AND REDRAWN | JNC | RS |

| DESIGN REFERENCE | NEXT ASSEMBLY |
|------------------|---------------|
| | |

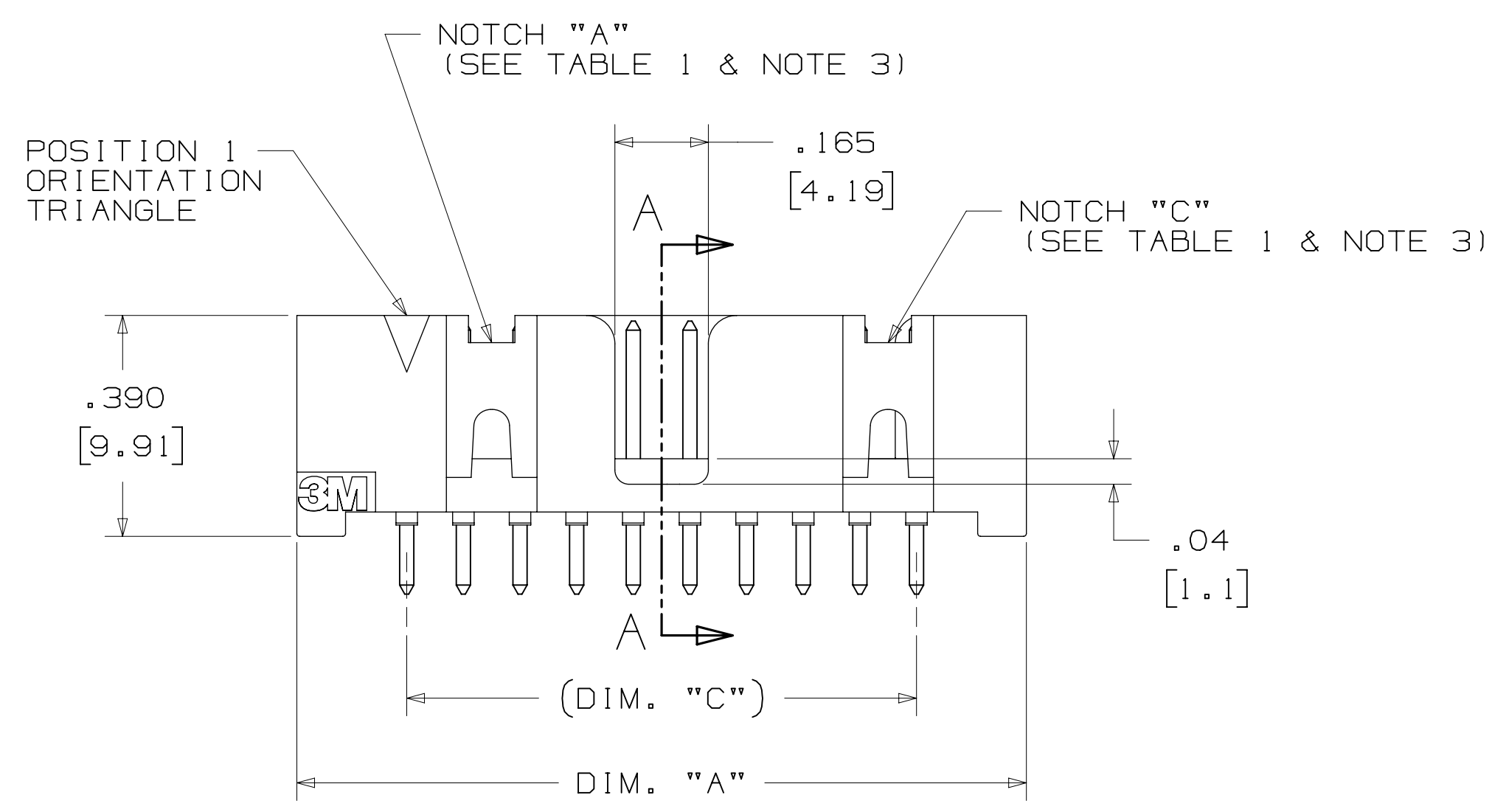
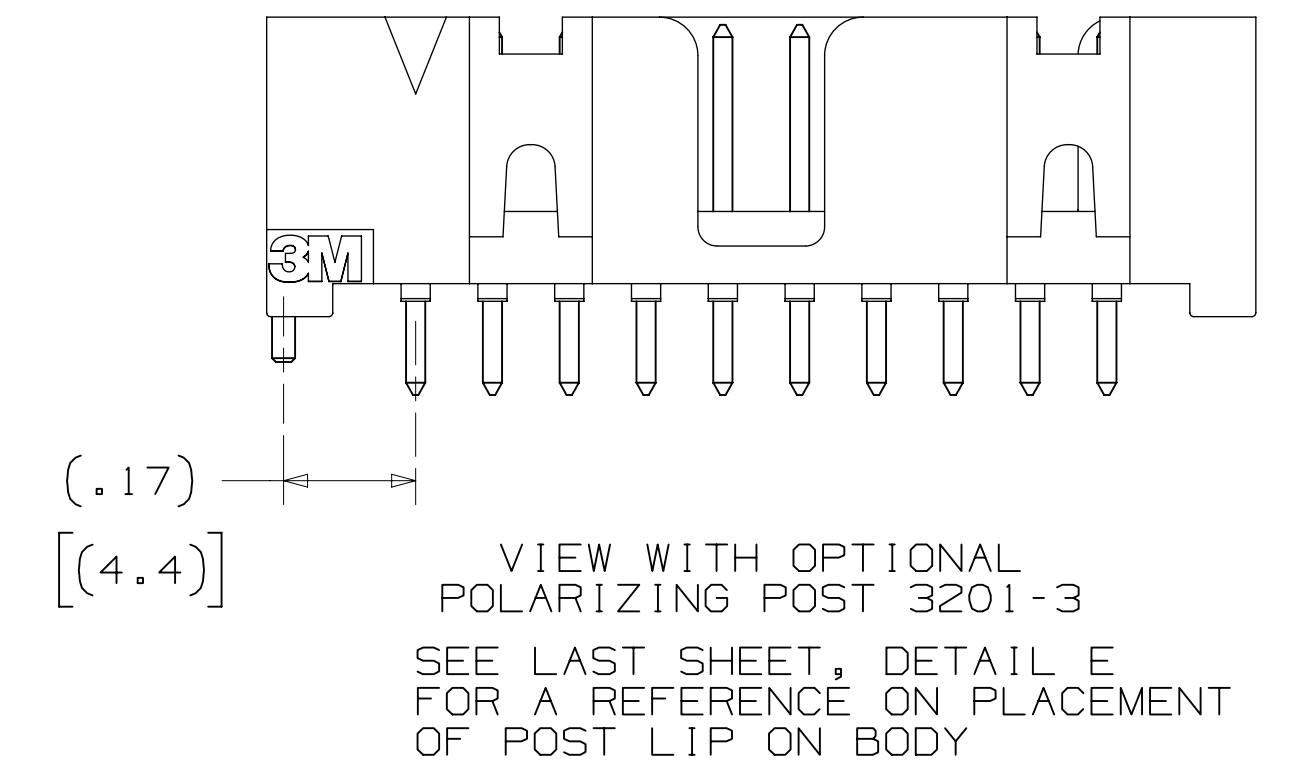
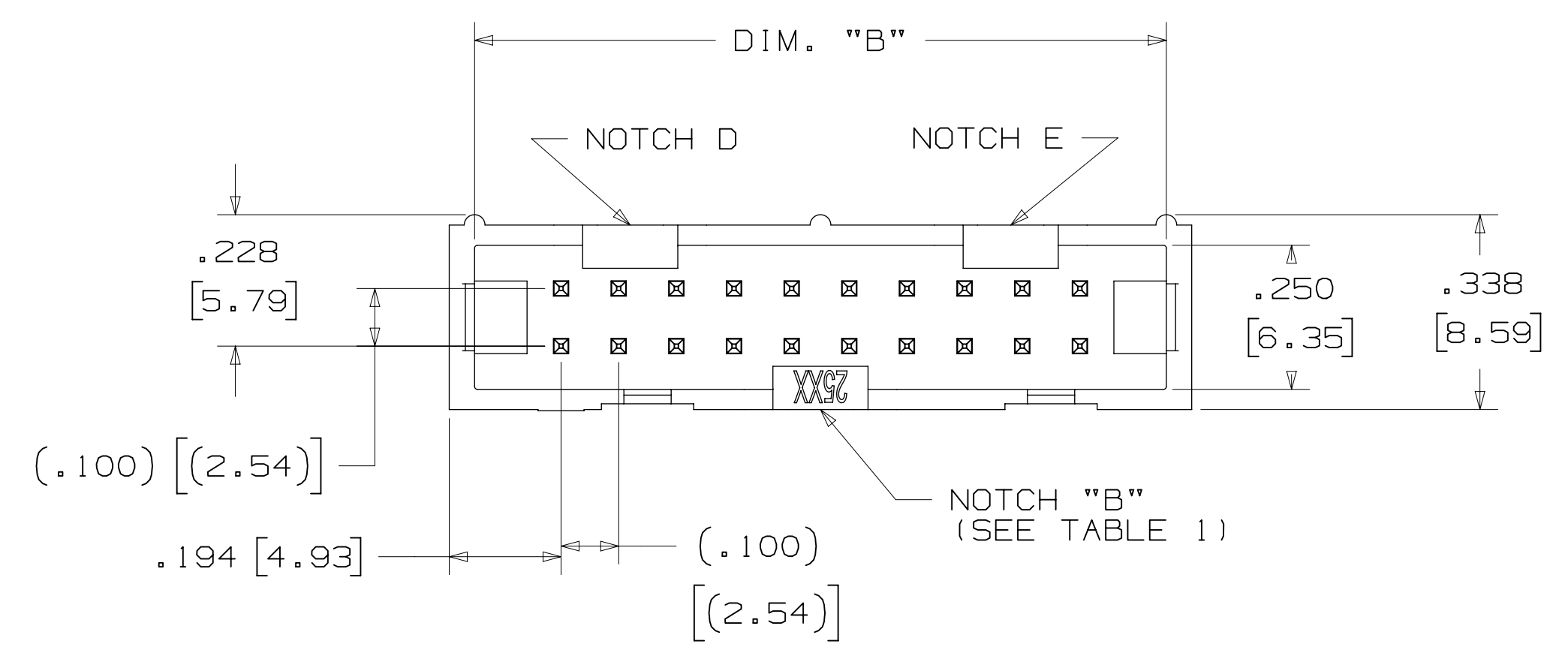
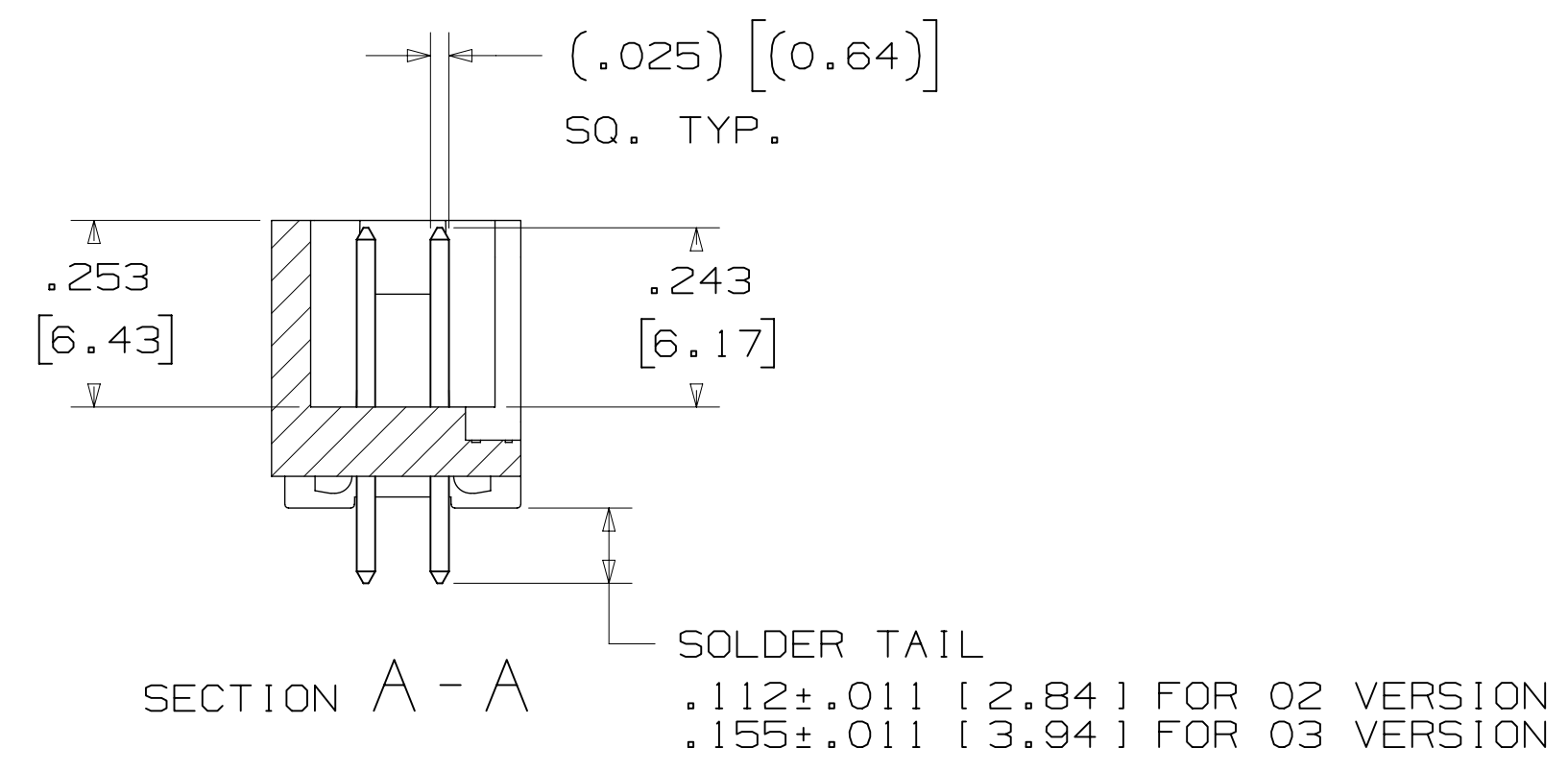
| | |
|---------------------------------|--|
| DESIGN CODES | |
| SCALE | SCALE: 4 (1) |
| TOLERANCES EXCEPT AS NOTED | INCHES: .00 ±.01, .000 ±.005, .0000 ±.0002 |
| INTERPRET PER ASME Y14.5 - 2018 | MILLIMETERS: ± 2, ± 13, ± .005 |
| MAX SURFACE ROUGHNESS | |
| THIRD ANGLE PROJECTION | |

| | | | |
|---|--------|---|--|
| <p>© 3M COPYR [GHT 2021]</p> <p>3M Center St. Paul, MN 55144</p> | | | |
| <p>This document and the information it contains are 3M property and may not be reproduced or further distributed without 3M permission, or used or disclosed other than for 3M authorized purposes. All rights reserved.</p> | | | |
| <p>TITLE HEADER, 4-WALL, LO-PRO, .100 X .100, SMT, STRAIGHT & RA</p> | | <p>DRAWING NO. D 78-5100-0770-7</p> | |
| CAGE NUMBER 2500 | REV. S | <p>DEF. [] YES [X] NO [] SHT 1 OF 6</p> | |

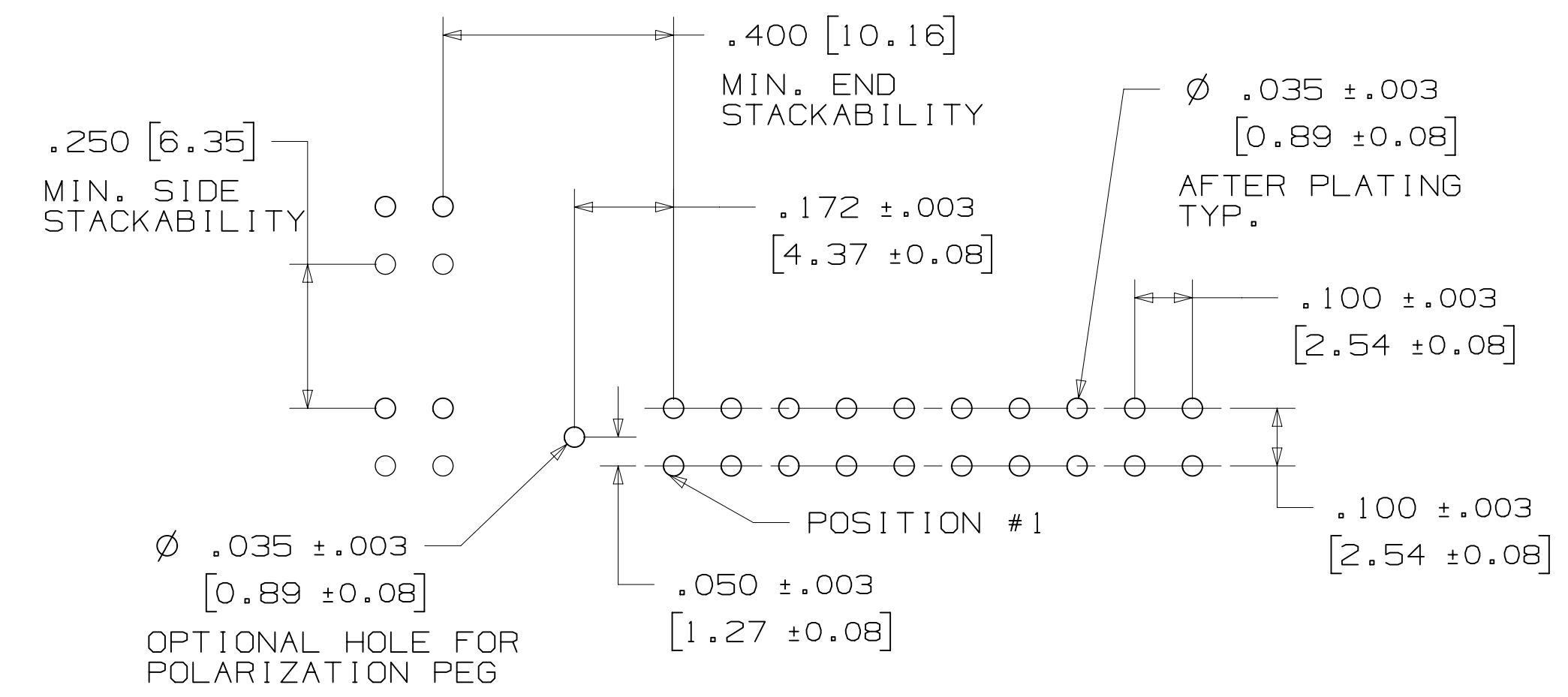


78-5100-0770-7
 11/5/2021 11:52
 Time
 UTC
 --
 Off-set (hrs)
 6
 B
 C
 D
 S
 REVISION
 DRAWING NUMBER

3M™ FOUR-WALL HEADER, 2500 SERIES
 .100" X .100" LOW PROFILE, SURFACE MOUNT, STRAIGHT AND RIGHT ANGLE THROUGH-HOLE



| TABLE 1 | | | | | |
|----------|---------------|---------------|---------------|--------------------|----------|
| PIN QTY. | DIM. "A" | DIM. "B" | DIM. "C" | POLARIZING NOTCHES | PIN QTY. |
| 06 | .588 [14.94] | .508 [12.90] | .200 [5.08] | B | 06 |
| 08 | .688 [17.48] | .608 [15.44] | .300 [7.62] | B | 08 |
| 10 | .788 [20.02] | .708 [17.98] | .400 [10.16] | BC | 10 |
| 14 | .988 [25.10] | .908 [23.06] | .600 [15.24] | BCDE | 14 |
| 16 | 1.088 [27.64] | 1.008 [25.60] | .700 [17.78] | ABCDE | 16 |
| 20 | 1.288 [32.72] | 1.208 [30.68] | .900 [22.86] | ABCDE | 20 |
| 24 | 1.488 [37.80] | 1.408 [35.76] | 1.100 [27.94] | ABCDE | 24 |
| 26 | 1.588 [40.34] | 1.508 [38.30] | 1.200 [30.48] | ABCDE | 26 |
| 30 | 1.788 [45.42] | 1.708 [43.38] | 1.400 [35.56] | ABCDE | 30 |
| 34 | 1.988 [50.50] | 1.908 [48.46] | 1.600 [40.64] | ABCDE | 34 |
| 36 | 2.088 [53.04] | 2.008 [51.00] | 1.700 [43.18] | ABCDE | 36 |
| 40 | 2.288 [58.12] | 2.208 [56.08] | 1.900 [48.26] | ABCDE | 40 |
| 50 | 2.788 [70.82] | 2.708 [68.78] | 2.400 [60.96] | ABCDE | 50 |
| 60 | 3.288 [83.52] | 3.208 [81.48] | 2.900 [73.66] | ABCDE | 60 |
| 64 | 3.488 [88.60] | 3.408 [86.56] | 3.100 [78.74] | ABCDE | 64 |



ORDERING INFORMATION
 STRAIGHT VERSION

X25XX-60XX-XX

N = RB PLATING REQ'D
 D = AR PLATING REQ'D (O2 SOLDER TAIL ONLY)

PIN QUANTITY: (SEE TABLE 1)

SOLDER TAIL:
 O2 = FOR .062 [1.57] THICK BOARD
 O3 = FOR .094 TO .125 [2.39 TO 3.18] THICK BOARD (SOLDER TAIL LENGTH ONLY AVAILABLE ON N25XX-60XX-RB)

PLATING:
 AR = 10µ [0.25µm] GOLD AVG.
 50µ-150µ [1.27µm-3.81µm] NICKEL UNDERPLATE
 40µ-120µ [1.02µm-3.05µm] MATTE TIN

RB = 30µ [0.76µm] GOLD AVG.
 50µ-150µ [1.27µm-3.81µm] NICKEL UNDERPLATE
 25µ-200µ [0.63µm-5.08µm] MATTE TIN

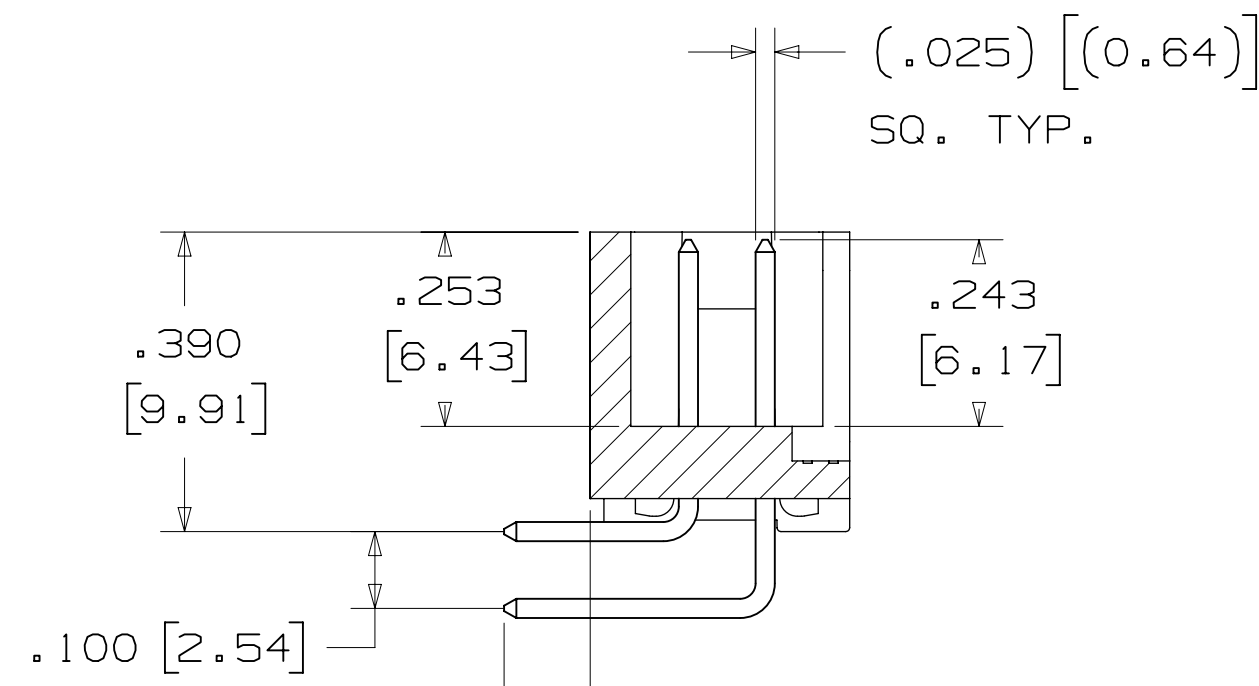
RECOMMENDED HOLE PATTERN
 SHOWN FROM COMPONENT SIDE

| | | | | | | |
|------------------------|---------------------------------|---|------|----------------------------|------|------|
| DESIGN REFERENCE | NEXT ASSEMBLY | REV | ECO | ISSUE DATE AND DESCRIPTION | DRFT | CHKD |
| | | | | | | |
| DATE | DATE | DATE | DATE | DATE | DATE | DATE |
| | | | | | | |
| DIVISION | DIVISION CODE | © 3M COPYRIGHT 2021 This document and the information it contains are 3M property and may not be reproduced or further distributed without 3M permission, or used or disclosed other than for 3M authorized purposes. All rights reserved. | | | | |
| Interconnect Solutions | EMSD | 3M Center St. Paul, MN 55144 | | | | |
| DO NOT SCALE DRAWING | SCALE 4-1 | TOLERANCES EXCEPT AS NOTED INCHES: .0 ±.1 .00 ±.01 .000 ±.005 .0000 ±.0002 MILLIMETERS: 0 ±.2 .0 ±.13 .000 ±.005 | | | | |
| THIRD ANGLE PROJECTION | INTERPRET PER ASME Y14.5 - 2018 | TITLE HEADER, 4-WALL, LO-PRO, .100 X .100, SMT, STRAIGHT & RA | | | | |
| MAX SURFACE ROUGHNESS | MARKED ONLY | CAGE NUMBER D78-5100-0770-7 | | | | |
| | | MODEL 2500 | | | | |
| | | REV. S | | | | |

78-5100-0770-7
 11/5/2021
 UTC
 6 hrs
 6

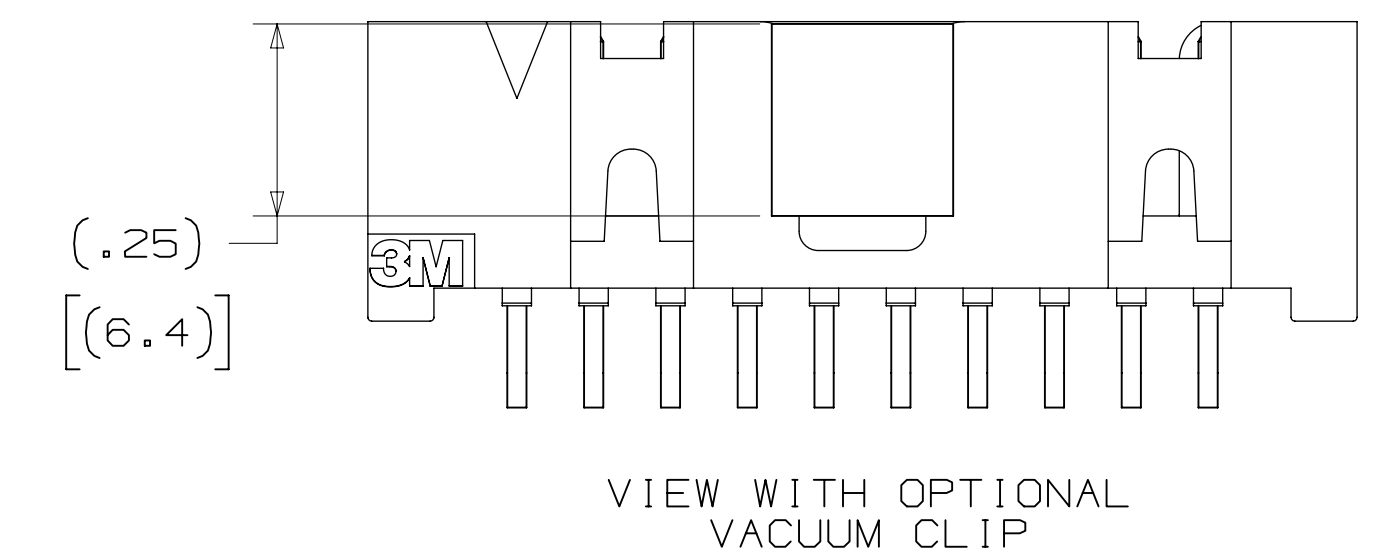
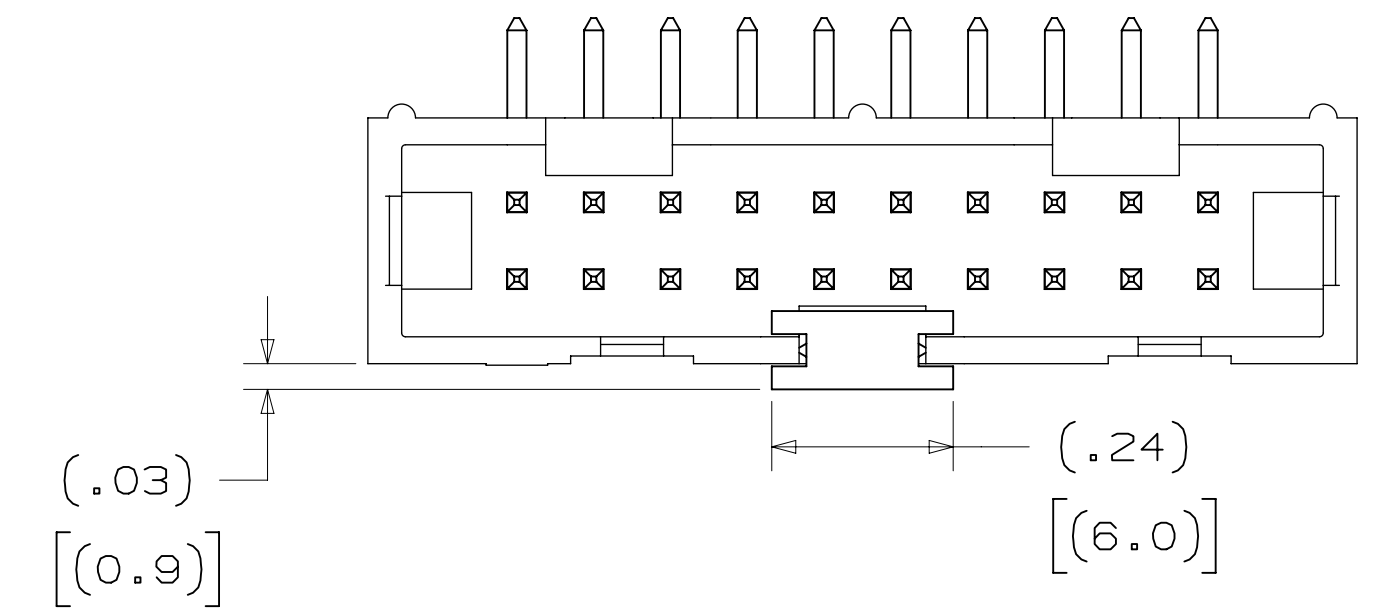
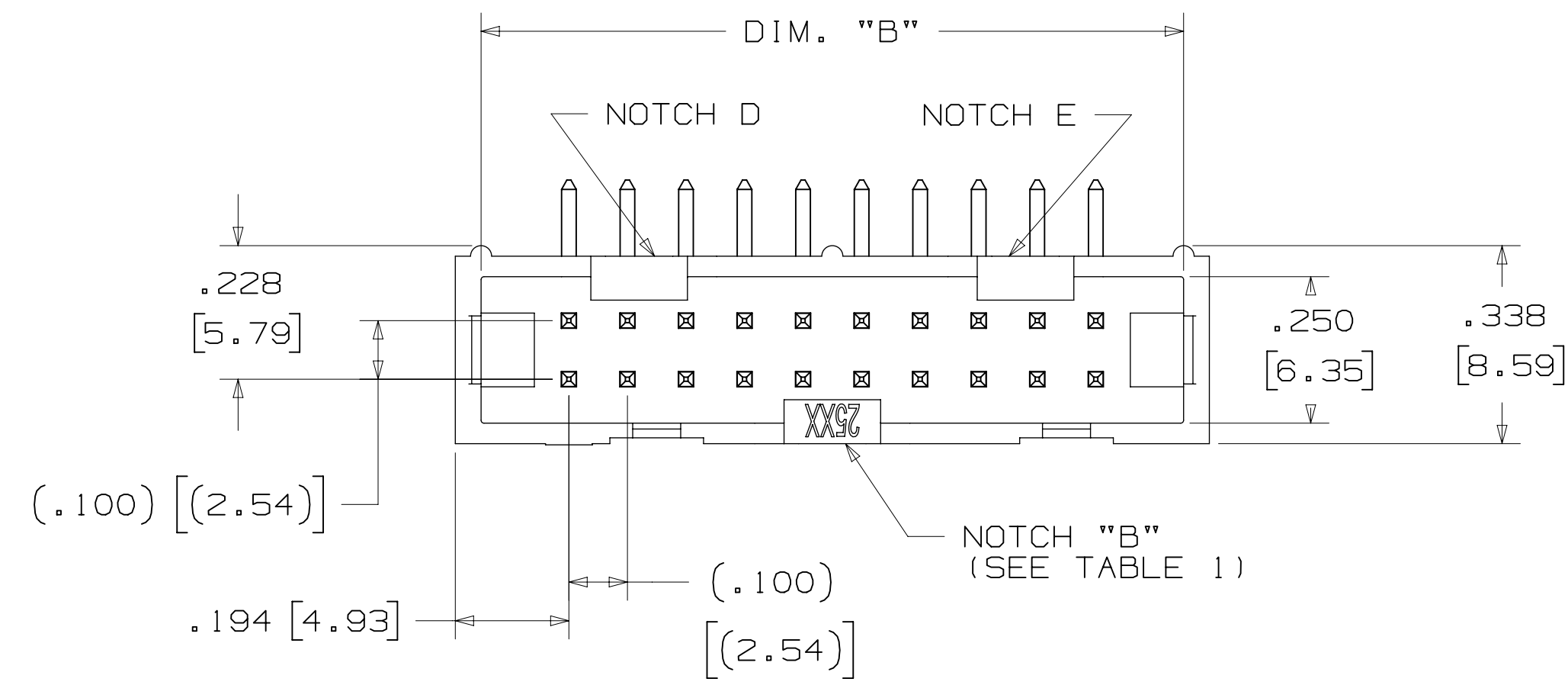
3M™ FOUR-WALL HEADER, 2500 SERIES

.100" X .100" LOW PROFILE, SURFACE MOUNT, STRAIGHT AND RIGHT ANGLE THROUGH-HOLE



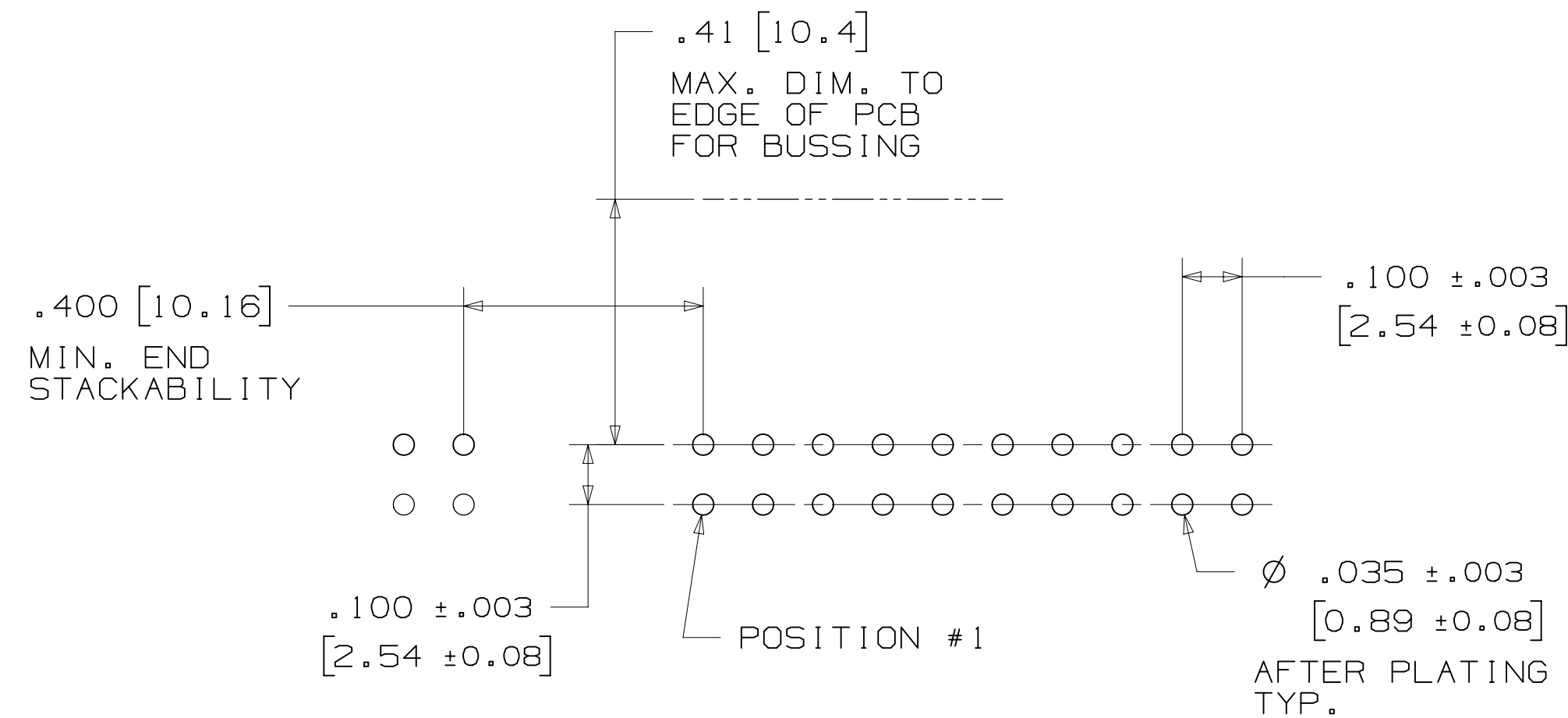
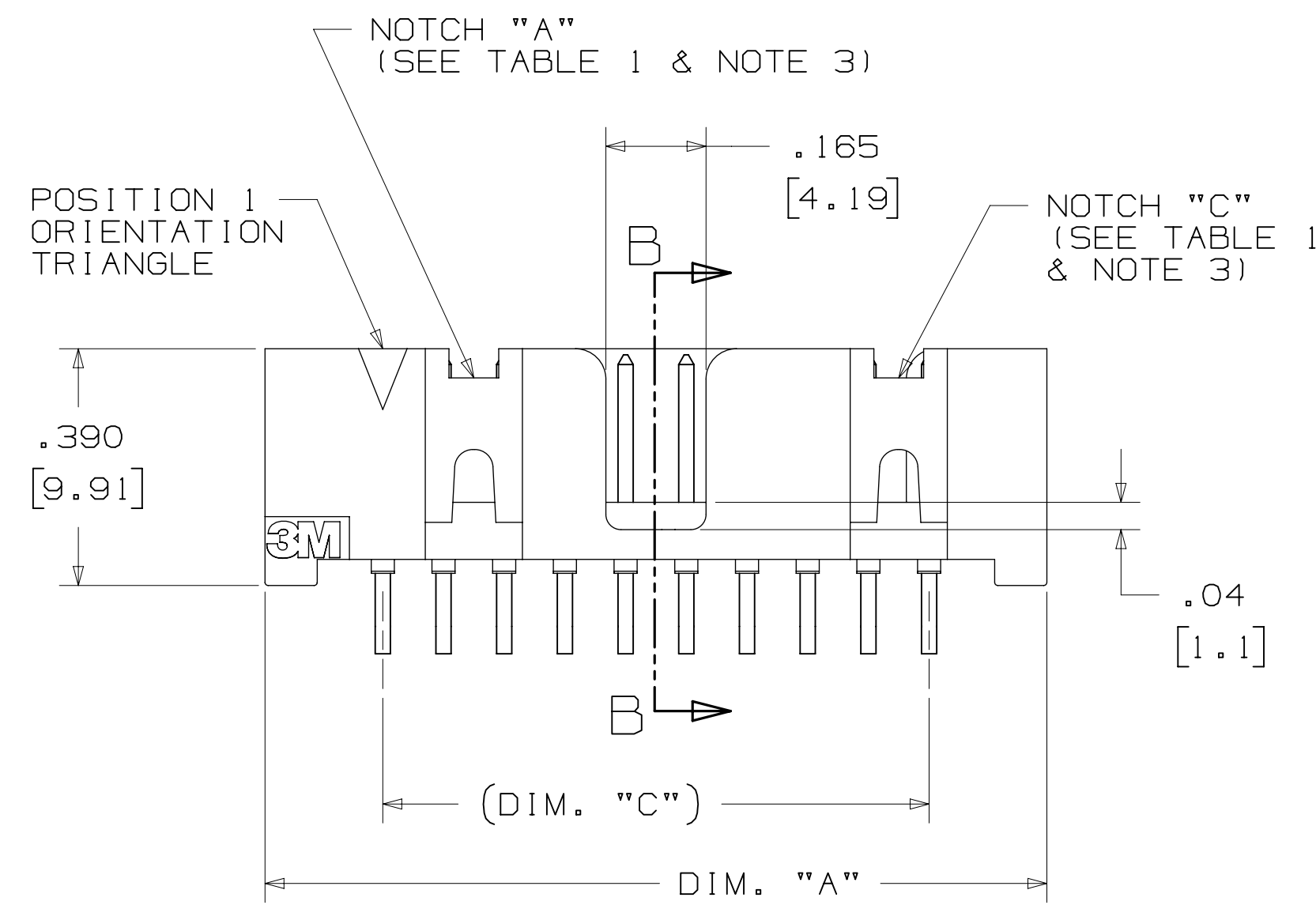
SOLDER TAIL
 .112±.011 [2.84] FOR 02 VERSION
 .155±.011 [3.94] FOR 03 VERSION

SECTION B-B



VIEW WITH OPTIONAL VACUUM CLIP

| TABLE 1 | | | | | |
|----------|---------------|---------------|---------------|--------------------|----------|
| PIN QTY. | DIM. "A" | DIM. "B" | DIM. "C" | POLARIZING NOTCHES | PIN QTY. |
| 06 | .588 [14.94] | .508 [12.90] | .200 [5.08] | B | 06 |
| 08 | .688 [17.48] | .608 [15.44] | .300 [7.62] | B | 08 |
| 10 | .788 [20.02] | .708 [17.98] | .400 [10.16] | BC | 10 |
| 14 | .988 [25.10] | .908 [23.06] | .600 [15.24] | BCDE | 14 |
| 16 | 1.088 [27.64] | 1.008 [25.60] | .700 [17.78] | ABCDE | 16 |
| 20 | 1.288 [32.72] | 1.208 [30.68] | .900 [22.86] | ABCDE | 20 |
| 24 | 1.488 [37.80] | 1.408 [35.76] | 1.100 [27.94] | ABCDE | 24 |
| 26 | 1.588 [40.34] | 1.508 [38.30] | 1.200 [30.48] | ABCDE | 26 |
| 30 | 1.788 [45.42] | 1.708 [43.38] | 1.400 [35.56] | ABCDE | 30 |
| 34 | 1.988 [50.50] | 1.908 [48.46] | 1.600 [40.64] | ABCDE | 34 |
| 36 | 2.088 [53.04] | 2.008 [51.00] | 1.700 [43.18] | ABCDE | 36 |
| 40 | 2.288 [58.12] | 2.208 [56.08] | 1.900 [48.26] | ABCDE | 40 |
| 50 | 2.788 [70.82] | 2.708 [68.78] | 2.400 [60.96] | ABCDE | 50 |
| 60 | 3.288 [83.52] | 3.208 [81.48] | 2.900 [73.66] | ABCDE | 60 |
| 64 | 3.488 [88.60] | 3.408 [86.56] | 3.100 [78.74] | ABCDE | 64 |



RECOMMENDED HOLE PATTERN SHOWN FROM COMPONENT SIDE

ORDERING INFORMATION RIGHT ANGLE VERSION

X25XX-50XX-XX

N = RB PLATING REQ'D
 D = AR PLATING REQ'D (02 SOLDER TAIL ONLY)
 PIN QUANTITY: (SEE TABLE 1)
 SOLDER TAIL:
 02 = FOR .062 [1.57] THICK BOARD
 03 = FOR .094 TO .125 [2.39 TO 3.18] THICK BOARD (SOLDER TAIL LENGTH ONLY AVAILABLE ON N25XX-50XX-RB)

PLATING:
 AR = 10μ" [0.25μm] GOLD AVG.
 50μ-150μ [1.27μm-3.81μm] NICKEL UNDERPLATE
 40μ-120μ [1.02μm-3.05μm] MATTE TIN
 RB = 30μ" [0.76μm] GOLD AVG.
 50μ-150μ [1.27μm-3.81μm] NICKEL UNDERPLATE
 25μ-200μ [0.63μm-5.08μm] MATTE TIN

| DESIGN REFERENCE | NEXT ASSEMBLY | REV | ECO | ISSUE DATE AND DESCRIPTION | DRFT | CHKD |
|------------------|---------------|-----|---------|---|------|------|
| | | S | 0100884 | NOV 03, 2021 CHANGED LATCH AND P/N | LDS | FJR |
| | | R | 97909 | JUN 22, 2021 REVISED ORDERING INFO | JNC | SAN |
| | | P | 89702 | JUL 08, 2020 REVISE DRAWING PER NEW HEADER MODEL | JNC | SN |
| | | N | 68908 | AUG 02, 2016 REVISE DIM ON SHT2 & CLIP CHART ON SHT5 | JNC | SC |
| | | M | 56068 | AUG 11, 2014 REVISED AND REDRAWN | JNC | RS |

| APPROVED | DATE | APPROVED | DATE |
|-------------|--------------|------------|--------------|
| CASTIGLIONE | AUG 11, 2014 | R. SCHERER | SEP 05, 2014 |

| DO NOT SCALE DRAWING | SCALE | TOLERANCES EXCEPT AS NOTED |
|----------------------|-------|--|
| | 4-1 | INCHES: .00 ±.01, .000 ±.005, .0000 ±.0002 |
| | | MILLIMETERS: 0 ±.2, .00 ±.13, .000 ±.005 |

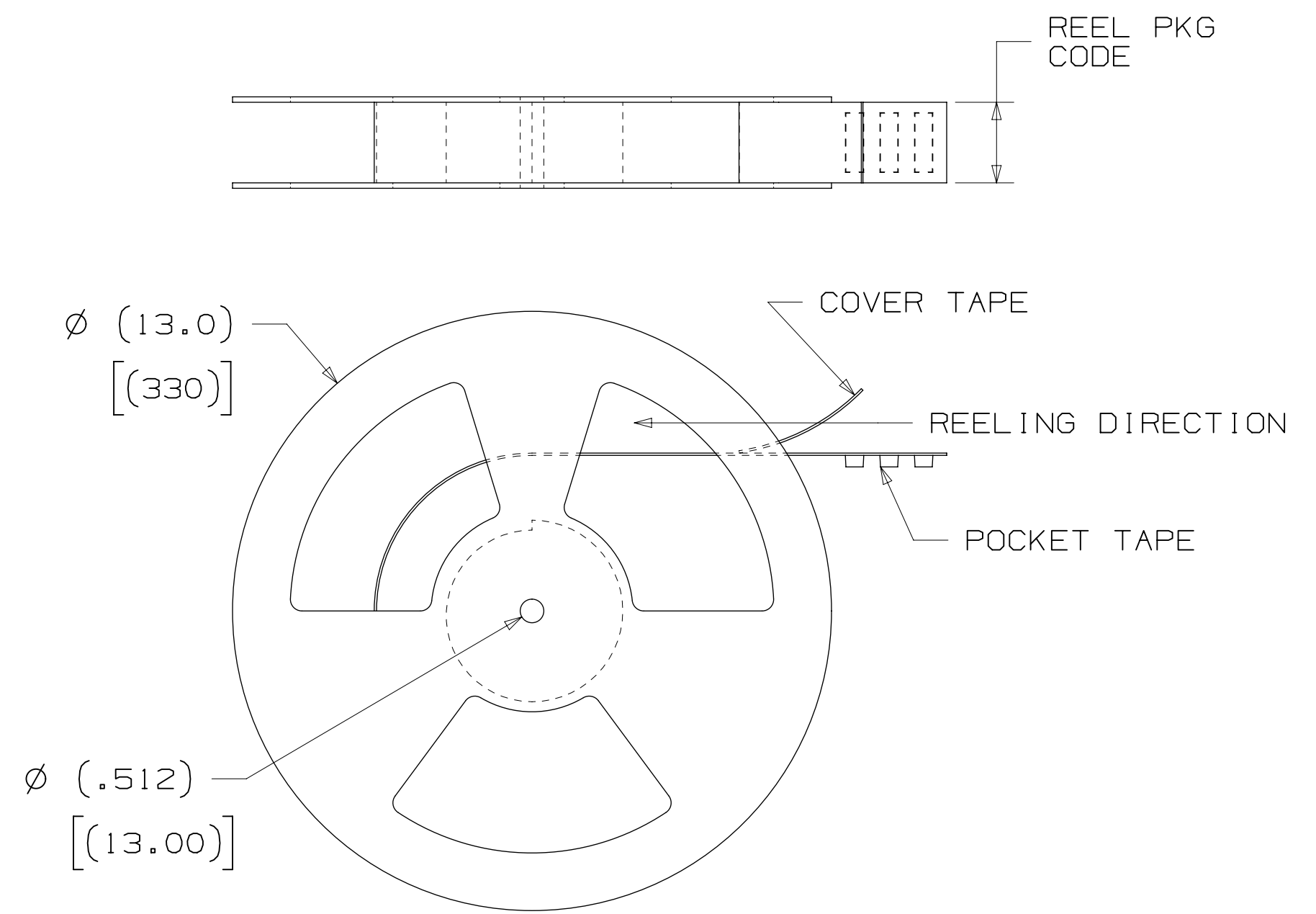
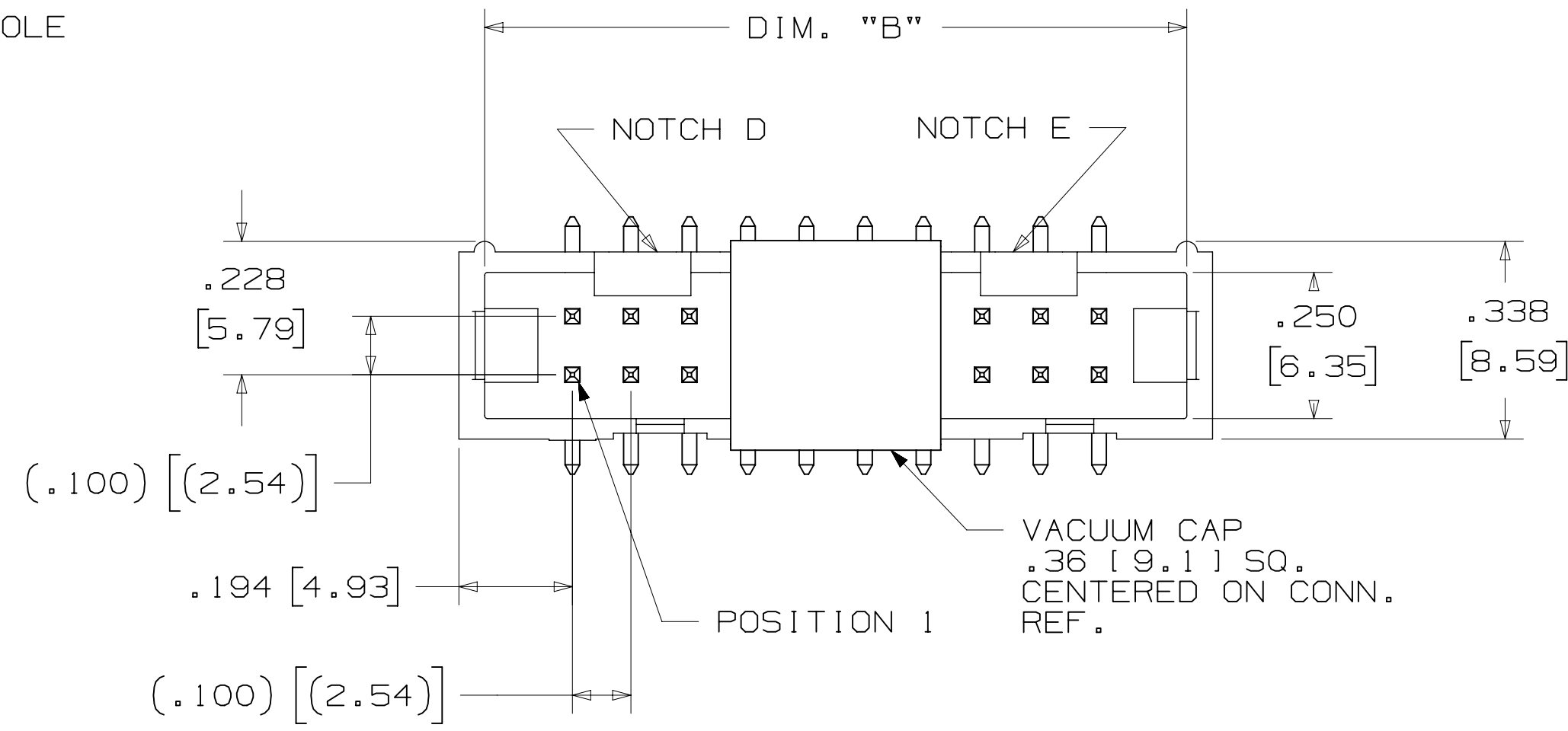
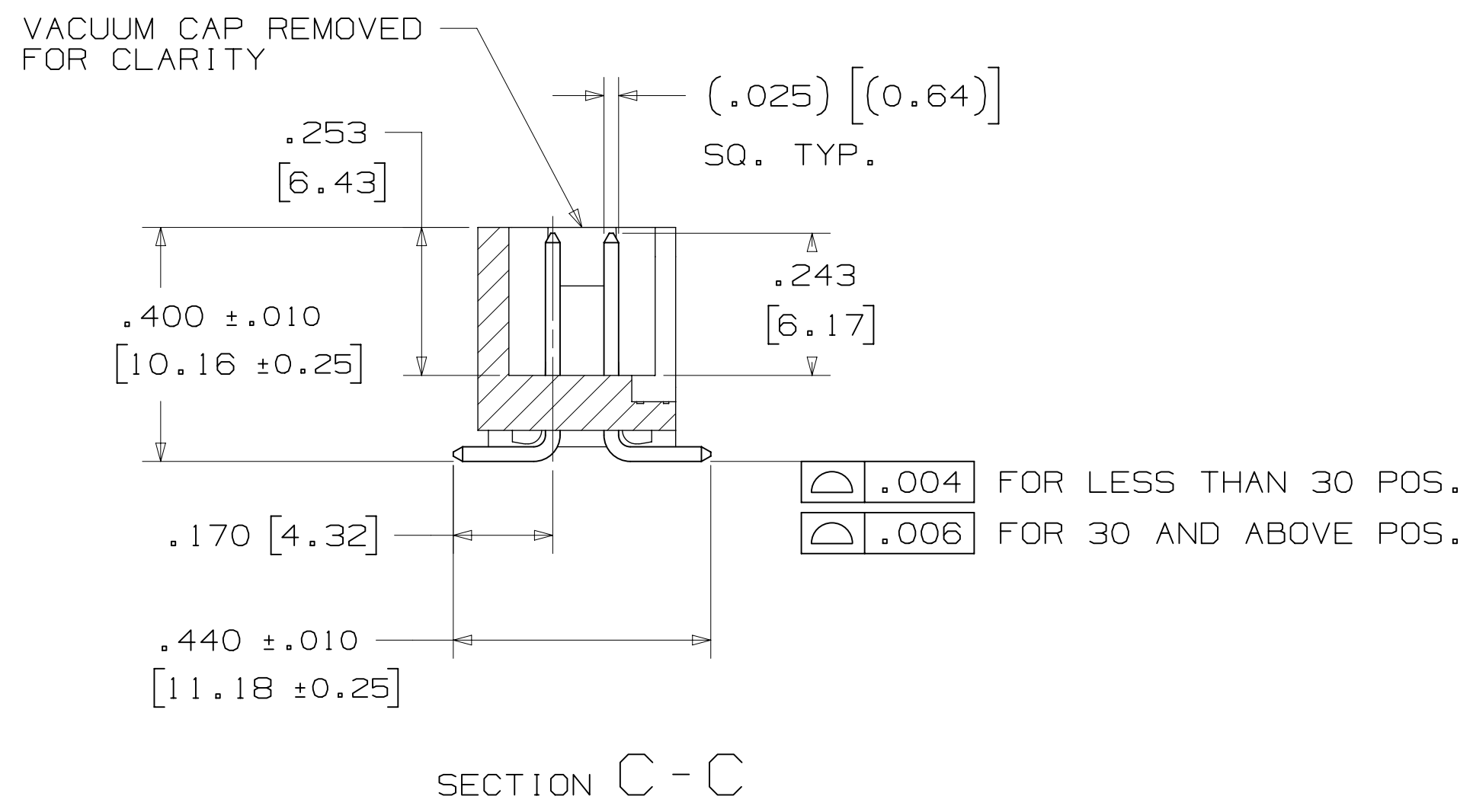
| INTERPRET PER ASME Y14.5 - 2018 | MAX SURFACE ROUGHNESS | MARKED ONLY |
|---------------------------------|-----------------------|-------------|
| | 0.13 | |

| TITLE | CAGE NUMBER | SIZE | DRAWING NO. | REV. |
|---|-------------|----------------|-------------|--------|
| HEADER, 4-WALL, LO-PRO, .100 X .100, SMT, STRAIGHT & RA | D | 78-5100-0770-7 | S | 3 OF 6 |

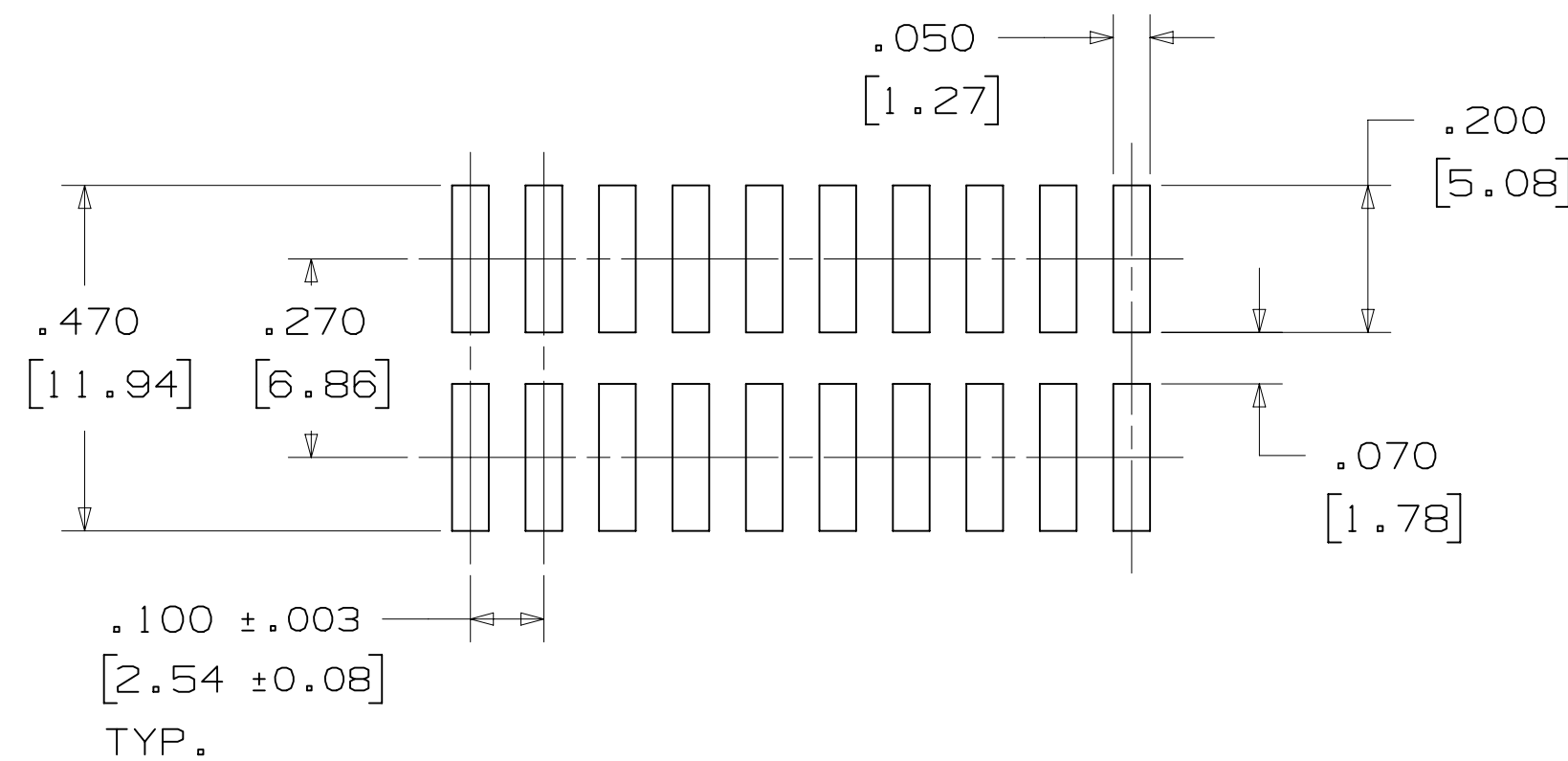
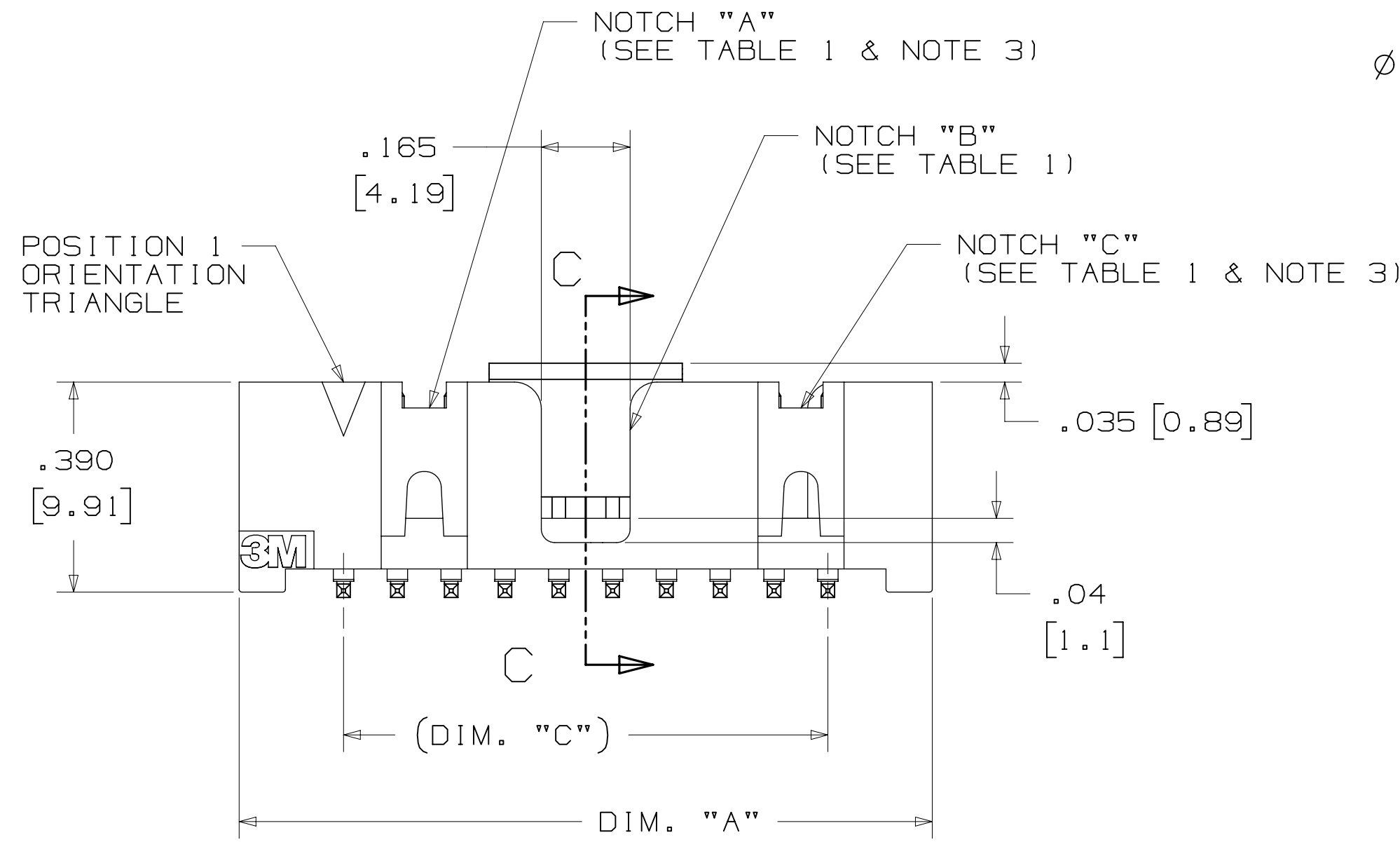
178-5100-0770-7
 11/5/2021
 UTC
 6
 3M
 2500
 SHT 3 OF 6

3M™ FOUR-WALL HEADER, 2500 SERIES

.100" X .100" LOW PROFILE, SURFACE MOUNT, STRAIGHT AND RIGHT ANGLE THROUGH-HOLE



| TABLE 1 | | | | | | |
|----------|---------------|---------------|---------------|--------------------|------------------------|----------|
| PIN QTY. | DIM. "A" | DIM. "B" | DIM. "C" | POLARIZING NOTCHES | TAPE AND REEL PKG CODE | PIN QTY. |
| 06 | .588 [14.94] | .508 [12.90] | .200 [5.08] | B | WD (44 MM) | 06 |
| 08 | .688 [17.48] | .608 [15.44] | .300 [7.62] | B | WD (44 MM) | 08 |
| 10 | .788 [20.02] | .708 [17.98] | .400 [10.16] | BC | WD (44 MM) | 10 |
| 14 | .988 [25.10] | .908 [23.06] | .600 [15.24] | BCDE | WD (44 MM) | 14 |
| 16 | 1.088 [27.64] | 1.008 [25.60] | .700 [17.78] | ABCDE | WD (44 MM) | 16 |
| 20 | 1.288 [32.72] | 1.208 [30.68] | .900 [22.86] | ABCDE | WE (56 MM) | 20 |
| 24 | 1.488 [37.80] | 1.408 [35.76] | 1.100 [27.94] | ABCDE | WE (56 MM) | 24 |
| 26 | 1.588 [40.34] | 1.508 [38.30] | 1.200 [30.48] | ABCDE | WE (56 MM) | 26 |
| 30 | 1.788 [45.42] | 1.708 [43.38] | 1.400 [35.56] | ABCDE | WF (72 MM) | 30 |
| 34 | 1.988 [50.50] | 1.908 [48.46] | 1.600 [40.64] | ABCDE | WF (72 MM) | 34 |
| 36 | 2.088 [53.04] | 2.008 [51.00] | 1.700 [43.18] | ABCDE | WG (88 MM) | 36 |
| 40 | 2.288 [58.12] | 2.208 [56.08] | 1.900 [48.26] | ABCDE | WG (88 MM) | 40 |
| 50 | 2.788 [70.82] | 2.708 [68.78] | 2.400 [60.96] | ABCDE | WG (88 MM) | 50 |
| 60 | 3.288 [83.52] | 3.208 [81.48] | 2.900 [73.66] | ABCDE | WH (120 MM) | 60 |
| 64 | 3.488 [88.60] | 3.408 [86.56] | 3.100 [78.74] | ABCDE | WH (120 MM) | 64 |



ORDERING INFORMATION SURFACE MOUNT VERSION

X25XX-6VOC-XX-XX

N = RB PLATING REQ'D
D = AR PLATING REQ'D

PIN QUANTITY:
(SEE TABLE 1)

PACKAGING OPTIONS:
WX = TAPE & REEL PACKAGING (SEE TABLE 1)

PLATING:
AR = 10μ" [0.25μm] GOLD AVG.
50μ-150μ [1.27μm-3.81μm] NICKEL UNDERPLATE
40μ-120μ" [1.02μm-3.05μm] MATTE TIN
RB = 30μ" [0.76μm] GOLD AVG.
50μ-150μ [1.27μm-3.81μm] NICKEL UNDERPLATE
25μ-200μ" [0.63μm-5.08μm] MATTE TIN

RECOMMENDED PAD LAYOUT

| REV | ECO | ISSUE DATE AND DESCRIPTION | DRFT | CHKD |
|-----|---------|--|------|------|
| S | 0100884 | NOV 03,2021 CHANGED LATCH AND P/N | LDS | FJR |
| R | 97909 | JUN 22,2021 REVISED ORDERING INFO | JNC | SAN |
| P | 89702 | JUL 08,2020 REVISE DRAWING PER NEW HEADER MODEL | JNC | SN |
| N | 68908 | AUG 02,2016 REVISE DIM ON SHT2 & CLIP CHART ON SHT5 | JNC | SC |
| M | 56068 | AUG 11,2014 REVISED AND REDRAWN | JNC | RS |

DESIGN REFERENCE NEXT ASSEMBLY

APPROVED BY: R. SCHERER DATE: SEP 05, 2014

3M

© 3M COPYR[IGHT] 2021

HEADER, 4-WALL, LO-PRO, .100 X .100, SMT, STRAIGHT & RA

DRAWING NO. 78-5100-0770-7

REV. S

MODEL 2500

SHT 4 OF 6

Imaged: Central Standard Time 11/5/2021 -- UTC Drf-set (hrs) 6

3M™ FOUR-WALL HEADER, 2500 SERIES

.100" X .100" LOW PROFILE, SURFACE MOUNT, STRAIGHT AND RIGHT ANGLE THROUGH-HOLE

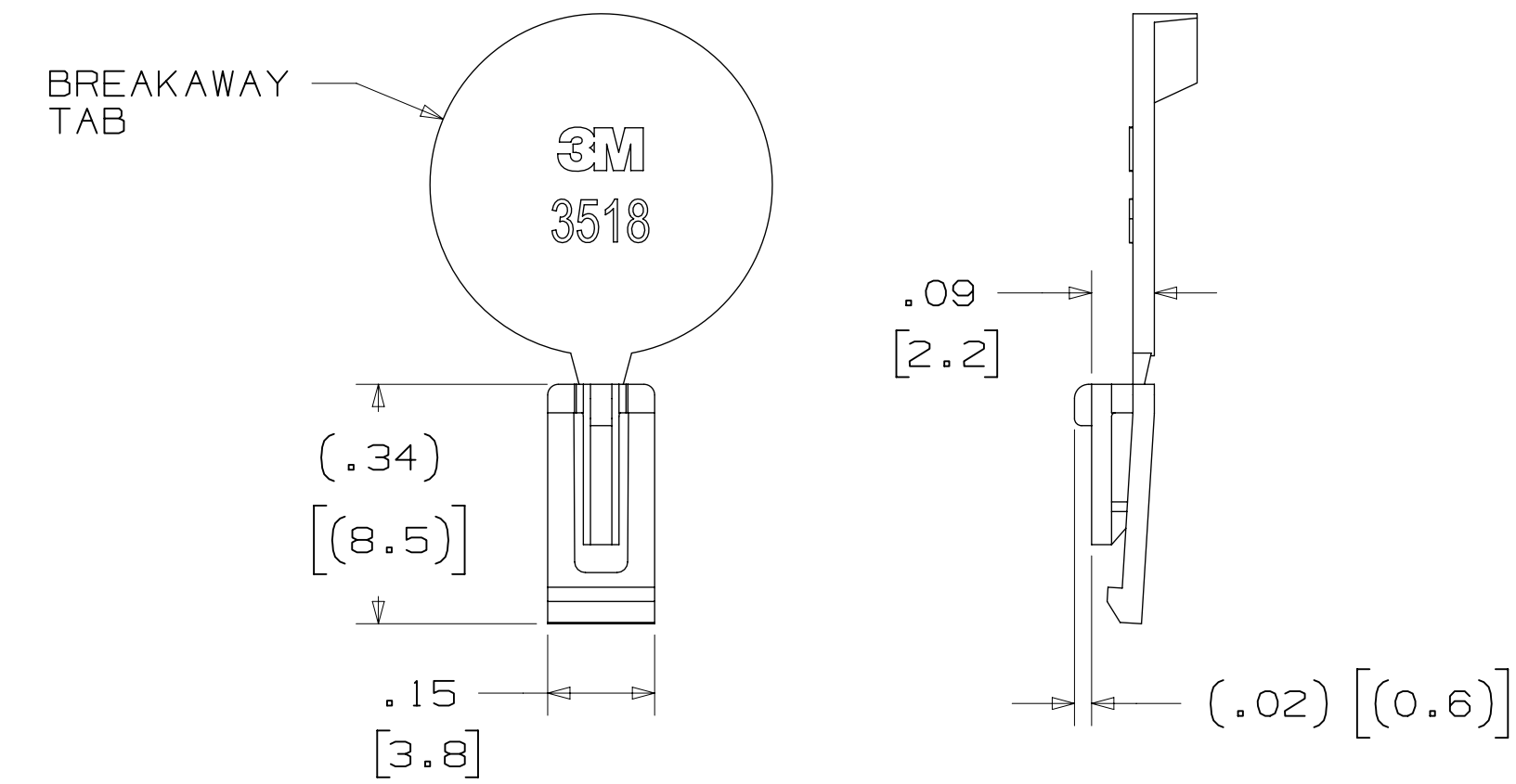
PART CUSTOMIZATION

THIS SPEC SHEET DETAILS OUR STANDARD OFFERING.

3M HAS SEVERAL CAPABILITIES THAT CAN PROVIDE A PART TAILORED TO YOUR SPECIFIC NEEDS. ASK YOUR 3M SALES REPRESENTATIVE OR CUSTOMER SERVICE FOR MORE DETAILS.

- * SELECTIVE PIN REMOVAL (FOR BOARD ASSEMBLY POLARIZATION).
- * DIFFERENT PIN LENGTHS.

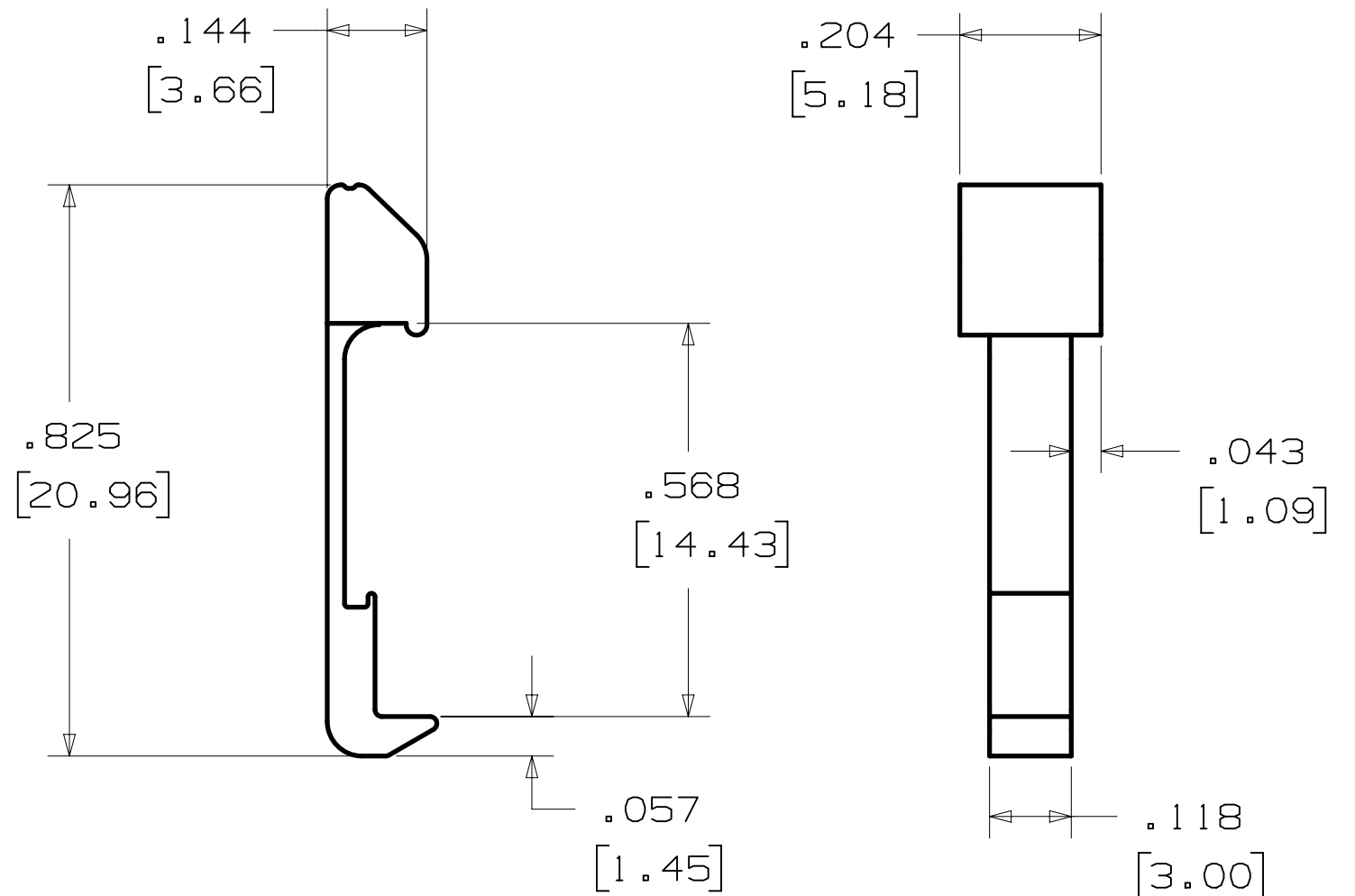
POLARIZING KEY



| 3M PART NO. | MATERIAL | COLOR |
|-------------|----------|-------|
| 3518 | PBT | GRAY |
| N3518 | LCP | BLACK |
| D3518 | PBT | BLACK |

NOTE:
 1) #2216 B/A SCOTCHWELD CAN BE USED TO ADHERE KEYS.
 2) SEE INSTRUCTION SHEET 78-9100-7795-3 FOR ASSEMBLY.

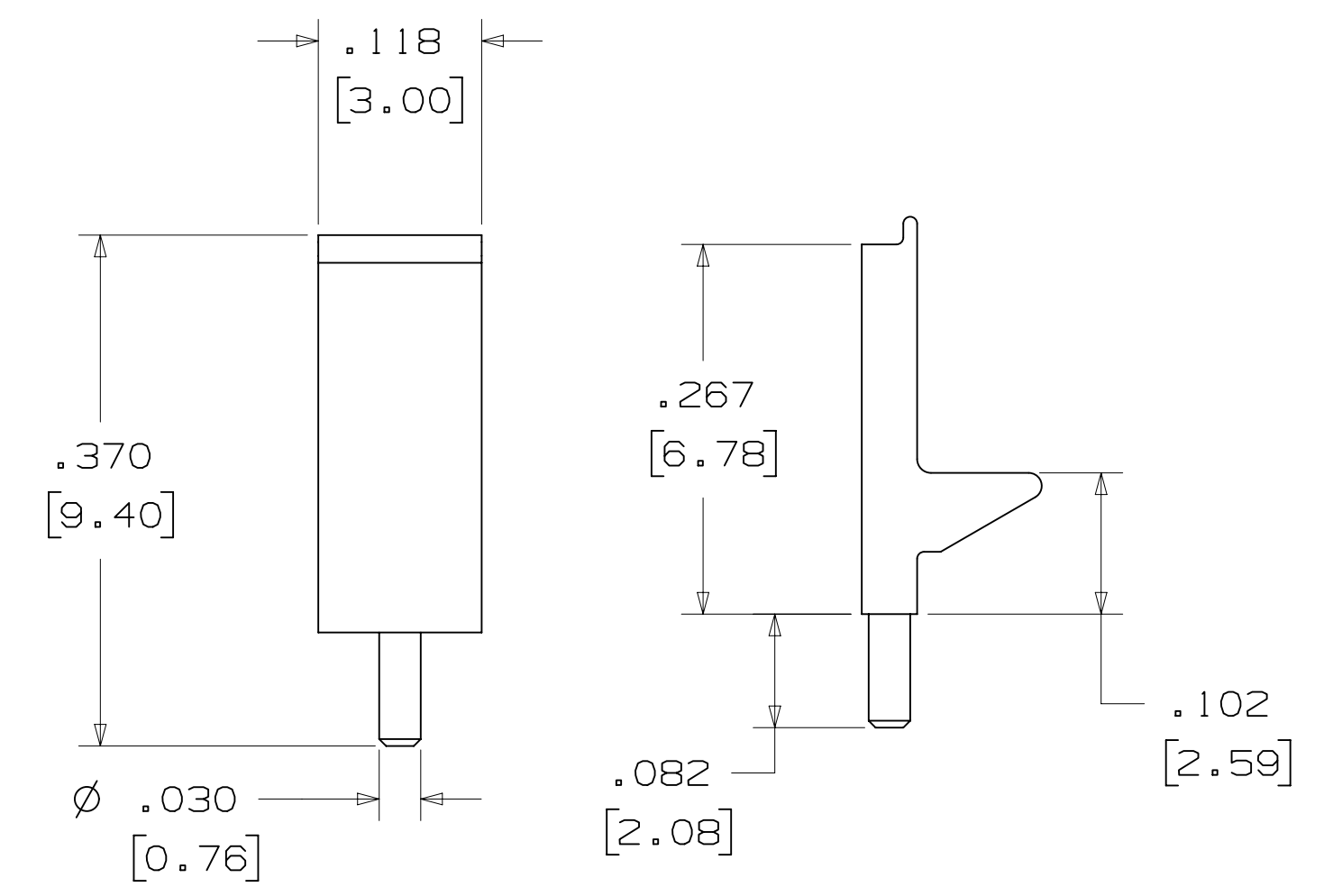
LOW PROFILE LATCH



| PART NO. | MATERIAL | COLOR |
|----------|----------|-------|
| 3505-33C | NYLON | BLACK |

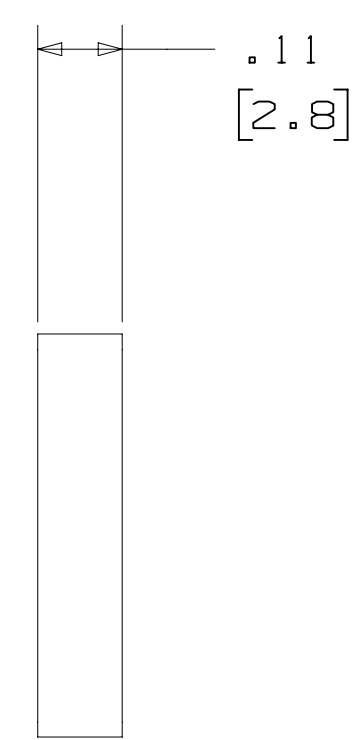
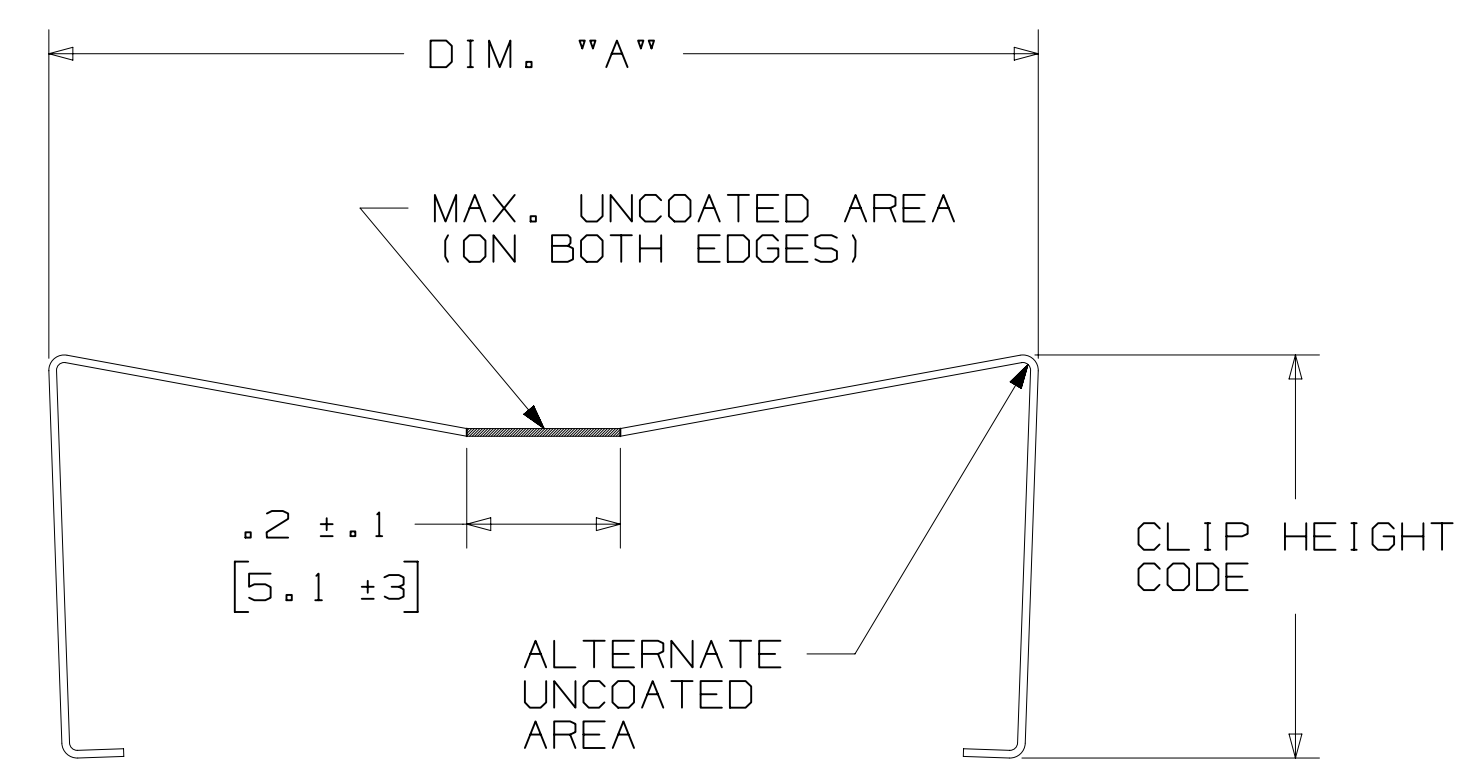
NOTE:
 1. LATCHES NOT COMPATIBLE WITH REFLOW SOLDERING. ATTACH LATCHES AFTER SOLDERING.
 2. LATCHES ARE MEANT FOR RETENTION ONLY.
 3. SEE LAST SHEET FOR ASSEMBLY.

POLARIZING POST



| PART NO. | MATERIAL | COLOR |
|----------|----------|-------|
| 3201-3 | PCT | BLACK |

SHORT/LONG SOCKET RETAINER CLIP



| PIN QTY. | DIM. "A" |
|----------|-------------|
| 06 | N/A |
| 08 | N/A |
| 10 | .81 [20.6] |
| 14 | 1.02 [25.9] |
| 16 | 1.12 [28.4] |
| 20 | 1.32 [33.5] |
| 24 | 1.52 [38.7] |
| 26 | 1.63 [41.4] |
| 30 | 1.83 [46.4] |
| 34 | 2.03 [51.6] |
| 36 | N/A |
| 40 | 2.33 [59.2] |
| 50 | 2.83 [71.9] |
| 60 | 3.33 [84.6] |
| 64 | 3.53 [89.7] |

NOTE:
 STAINLESS STEEL WITH GRAY POLYURETHANE COATING.

3505-8XXX

CLIP HEIGHT CODE _____ PIN COUNT (SEE TABLE)
 0 = .31 [7.9] FOR SOCKETS WITHOUT STRAIN RELIEF
 1 = .53 [13.5] FOR SOCKETS WITH STRAIN RELIEF

NOTE:
 1) THE FOLLOWING RETAINER CLIPS HAVE BEEN DISCONTINUED:
 3505-8064
 3505-8124
 3505-8150

| DESIGN REFERENCE | NEXT ASSEMBLY | REV | ECO | ISSUE DATE AND DESCRIPTION | DRFT | CHKD |
|------------------|---------------|-----|---------|---|------|------|
| | | S | 0100884 | NOV 03, 2021 CHANGED LATCH AND P/N | LDS | FJR |
| | | R | 97909 | JUN 22, 2021 REVISED ORDERING INFO | JNC | SAN |
| | | P | 89702 | JUL 08, 2020 REVISE DRAWING PER NEW HEADER MODEL | JNC | SN |
| | | N | 68908 | AUG 02, 2016 REVISE DIM ON SHT2 & CLIP CHART ON SHT5 | JNC | SC |
| | | M | 56068 | AUG 11, 2014 REVISED AND REDRAWN | JNC | RS |
| | | | | AUG 11, 2014 | | |
| | | | | AUG 11, 2014 | | |
| | | | | AUG 11, 2014 | | |
| | | | | AUG 11, 2014 | | |
| | | | | AUG 11, 2014 | | |

| DIVISION | SCALE | TOLERANCES EXCEPT AS NOTED | 3M |
|---------------------------------|-----------|----------------------------|----|
| Interconnect Solutions | SCALE 4/1 | TOLERANCES EXCEPT AS NOTED | 3M |
| DO NOT SCALE DRAWING | | | |
| THIRD ANGLE PROJECTION | | | |
| INTERPRET PER ASME Y14.5 - 2018 | | | |
| MAX SURFACE ROUGHNESS | | | |
| MARKED ONLY | | | |

| TITLE | CAGE NUMBER | SIZE | DRAWING NO. | REV. |
|---|-------------|----------------|-------------|------|
| HEADER, 4-WALL, LO-PRO, .100 X .100, SMT, STRAIGHT & RA | D | 78-5100-0770-7 | S | 5 |

3M™ FOUR-WALL HEADER, 2500 SERIES

.100" X .100" LOW PROFILE, SURFACE MOUNT, STRAIGHT AND RIGHT ANGLE THROUGH-HOLE

Regulatory: For regulatory information about this product, visit 3M.com/regs or contact your 3M representative.

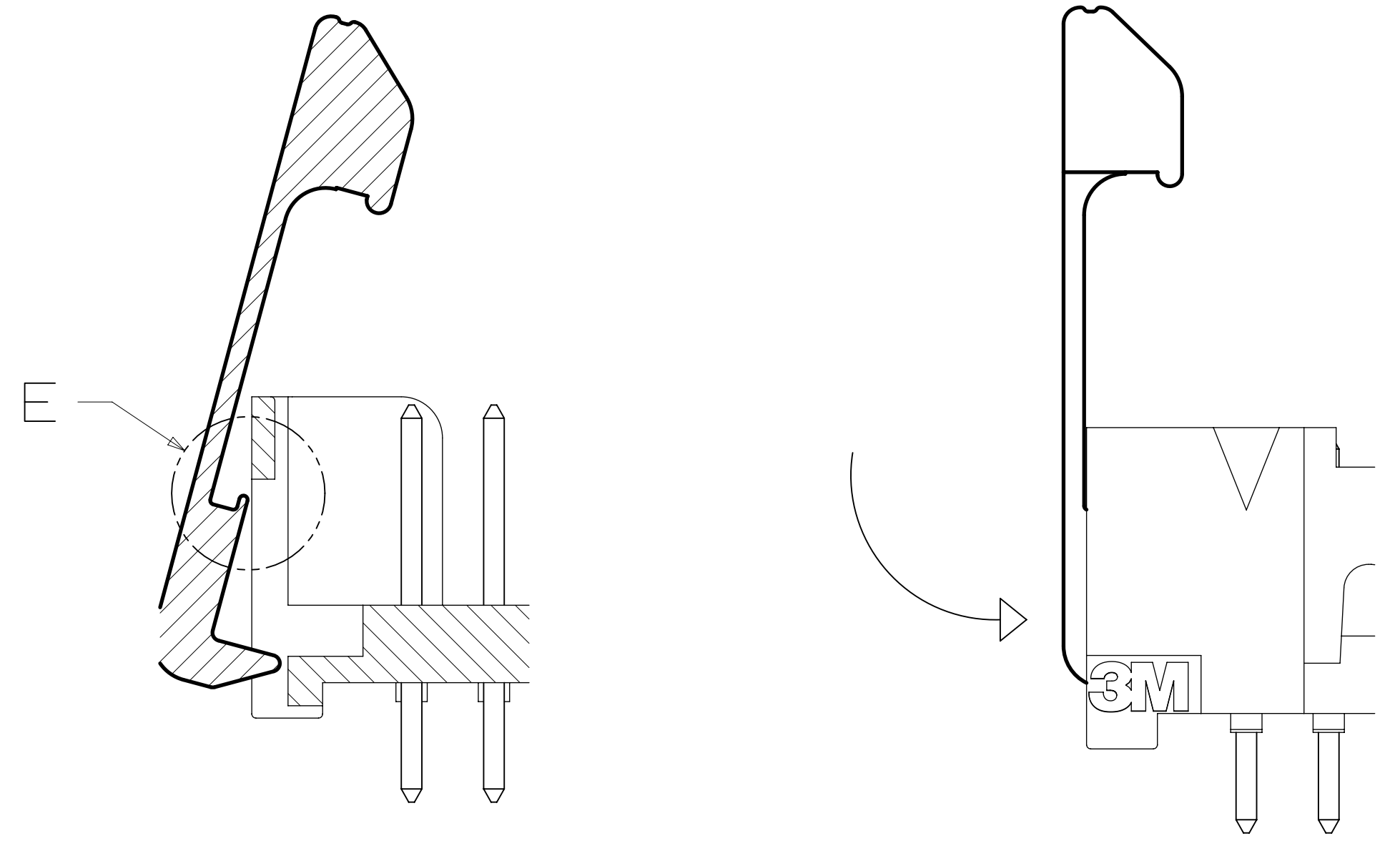
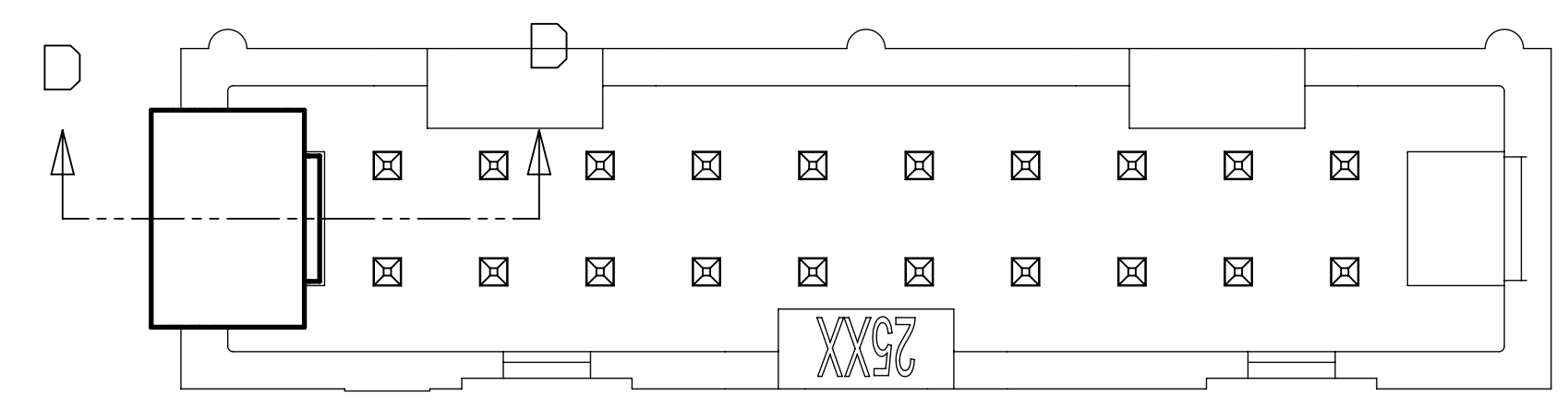
Technical Information: The technical information, recommendations and other statements contained in this document are based upon tests or experience that 3M believes are reliable, but the accuracy or completeness of such information is not guaranteed.

Product Use: Many factors beyond 3M's control and uniquely within user's control can affect the use and performance of a 3M product in a particular application. Given the variety of factors that can affect the use and performance of a 3M product, user is solely responsible for evaluating the 3M product and determining whether it is fit for a particular purpose and suitable for user's method of application.

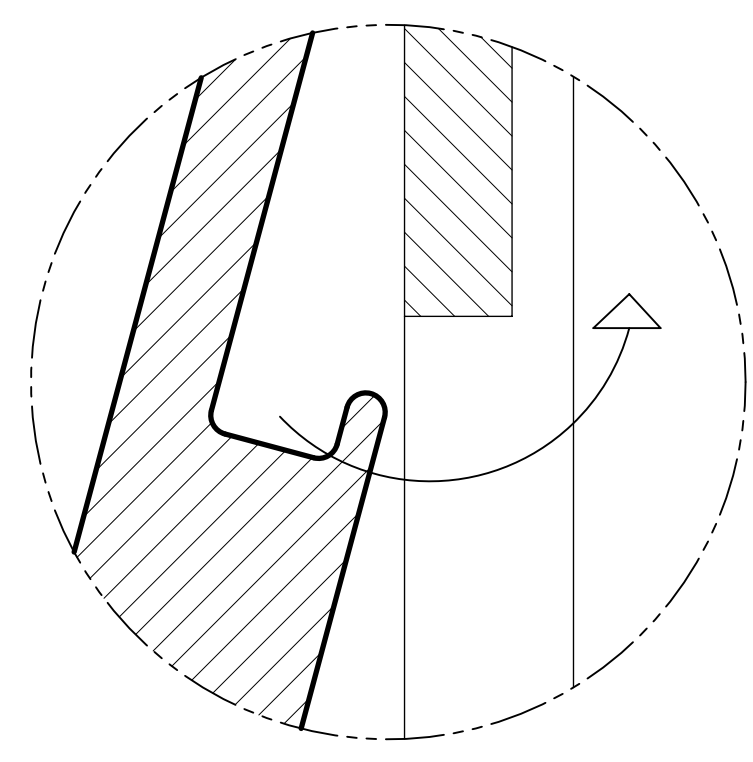
Warranty, Limited Remedy, and Disclaimer: Unless an additional warranty is specifically stated on the applicable 3M product packaging or product literature, 3M warrants that each 3M product meets the applicable 3M product specification at the time 3M ships the product. 3M MAKES NO OTHER WARRANTIES OR CONDITIONS, EXPRESS OR IMPLIED, INCLUDING, BUT NOT LIMITED TO, ANY IMPLIED WARRANTY OR CONDITION OF MERCHANTABILITY OR FITNESS FOR A PARTICULAR PURPOSE OR ANY IMPLIED WARRANTY OR CONDITION ARISING OUT OF A COURSE OF DEALING, CUSTOM OR USAGE OR TRADE. If the 3M product does not conform to this warranty, then the sole and exclusive remedy is, at 3M's option, replacement of the 3M product or refund of the purchase price.

Limitation of Liability: Except where prohibited by law, 3M will not be liable for any loss or damage arising from the 3M product, whether direct, indirect, special, incidental or consequential, regardless of the legal theory asserted, including warranty, contract, negligence or strict liability.

3M Company
 Electronics Materials Solutions Division
 13011 McCallen Pass, Bldg. C
 Austin, TX 78753-5380
 1-800-225-5373
www.3M.com/interconnect



SECTION D-D
 SCALE 6x



Detail E
 SCALE 20x

TO ASSEMBLE LATCH:
 PLACE LIP UNDER OPENING IN END WALL.
 PRESS INTO END WALL UNTIL LATCH CLICKS.

| REV | ECO | ISSUE DATE AND DESCRIPTION | DRFT | CHKD |
|-----|---------|---|------|------|
| S | 0100884 | NOV 03,2021 CHANGED LATCH AND P/N | LDS | FJR |
| R | 97909 | JUN 22,2021 REVISED ORDERING INFO | JNC | SAN |
| P | 89702 | JUL 08,2020 REVISE DRAWING PER NEW HEADER MODEL | JNC | SN |
| N | 68908 | AUG 02,2016 REVISE DIM ON SHT2 & CLIP CHART ON SHT5 | JNC | SC |
| M | 56068 | AUG 11,2014 REVISED AND REDRAWN | JNC | RS |

| | | | | | | |
|----------------------|------------------------|----------------------------|-------------|----------------------------|------|------|
| DESIGN REFERENCE | NEXT ASSEMBLY | REV | ECO | ISSUE DATE AND DESCRIPTION | DRFT | CHKD |
| | | | | AUG 11,2014 | | |
| DRW CODES | | DRFT | CASTIGLIONE | DATE | MFG | DATE |
| | | | | | | |
| DIVISION | INTERCONNECT SOLUTIONS | DIVISION CODE | EMSD | | | |
| DO NOT SCALE DRAWING | SCALE 6/1 | TOLERANCES EXCEPT AS NOTED | | | | |
| | | INCHES | | | | |
| | | .0 | ± .1 | | | |
| | | .00 | ± .01 | | | |
| | | .000 | ± .005 | | | |
| | | .0000 | ± .0002 | | | |
| | | MILLIMETERS | | | | |
| | | 0 | ± 2 | | | |
| | | .0 | ± .3 | | | |
| | | .00 | ± .13 | | | |
| | | .000 | ± .005 | | | |
| | | MARKED SURFACES | | | | |
| | | MARKED ONLY | | | | |

| | | |
|-------------|---|--|
| 3M | © 3M COPYRIGHT 2021 | This document and the information it contains are 3M property and may not be reproduced or further distributed without 3M permission, or used or disclosed other than for 3M authorized purposes. All rights reserved. |
| TITLE | HEADER, 4-WALL, LO-PRO, .100 X .100, SMT, STRAIGHT & RA | |
| CAGE NUMBER | SIZE | DRAWING NO. |
| D | | 78-5100-0770-7 |
| MODEL | 2500 | REV. S |
| | | DET. <input type="checkbox"/> YES <input checked="" type="checkbox"/> NO SHT 6 OF 6 |