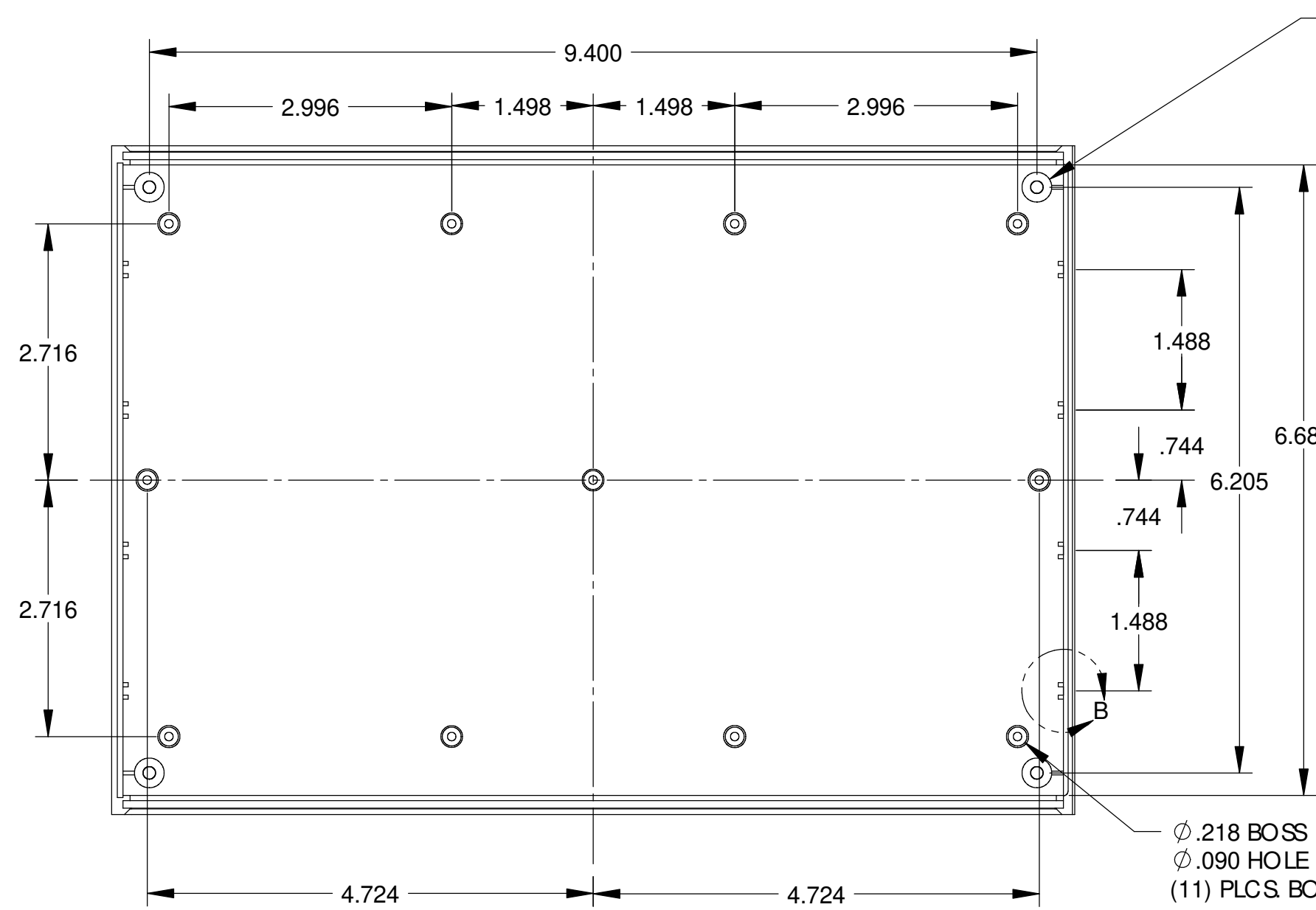


PART NAME

PLASTIC INSTRUMENT CASE

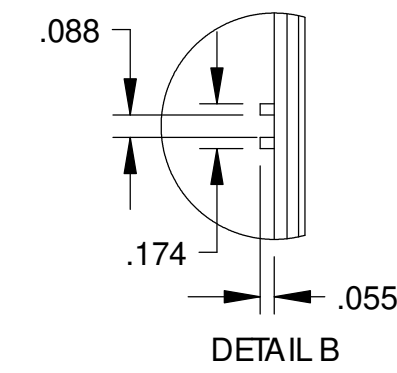
PART No.

IP-6136 & IP-6137 & IP-6138



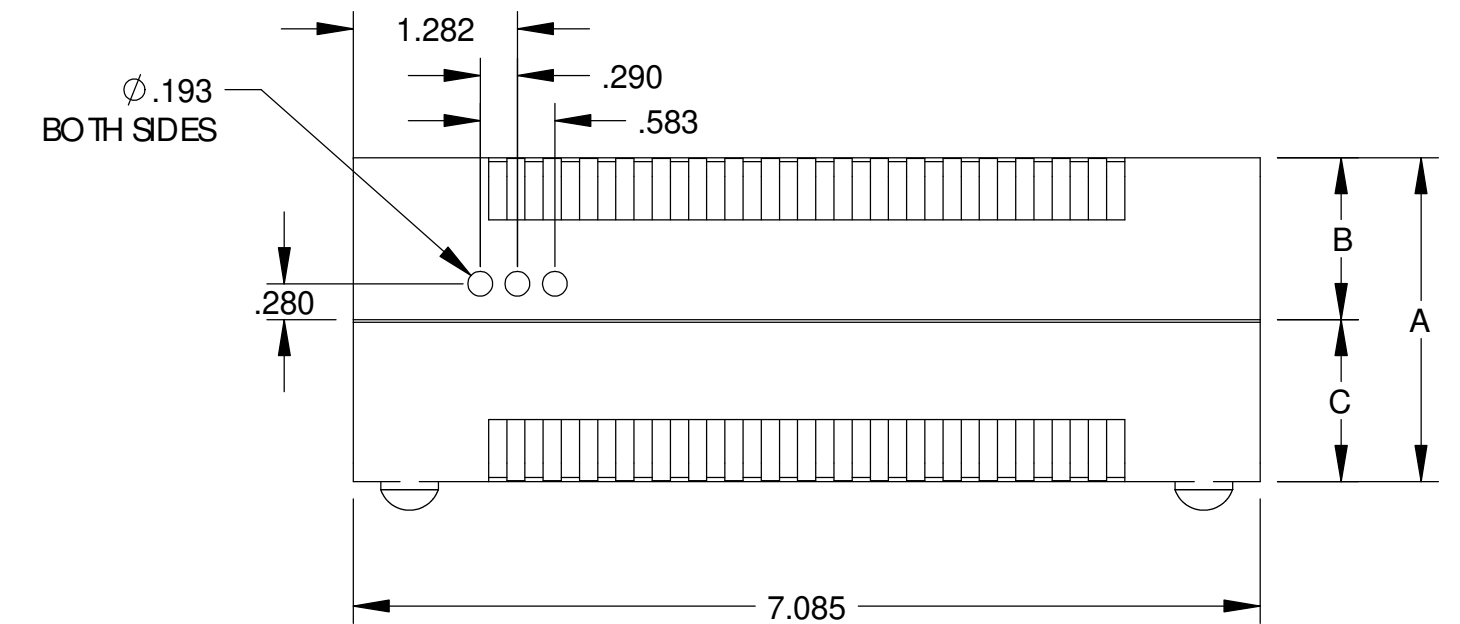
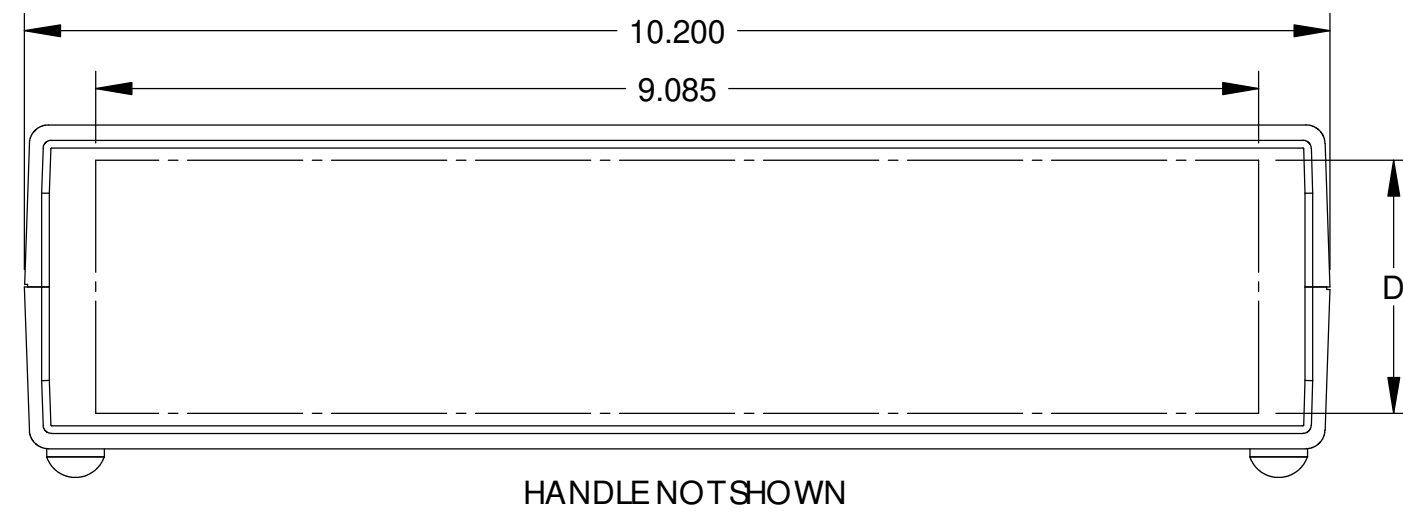
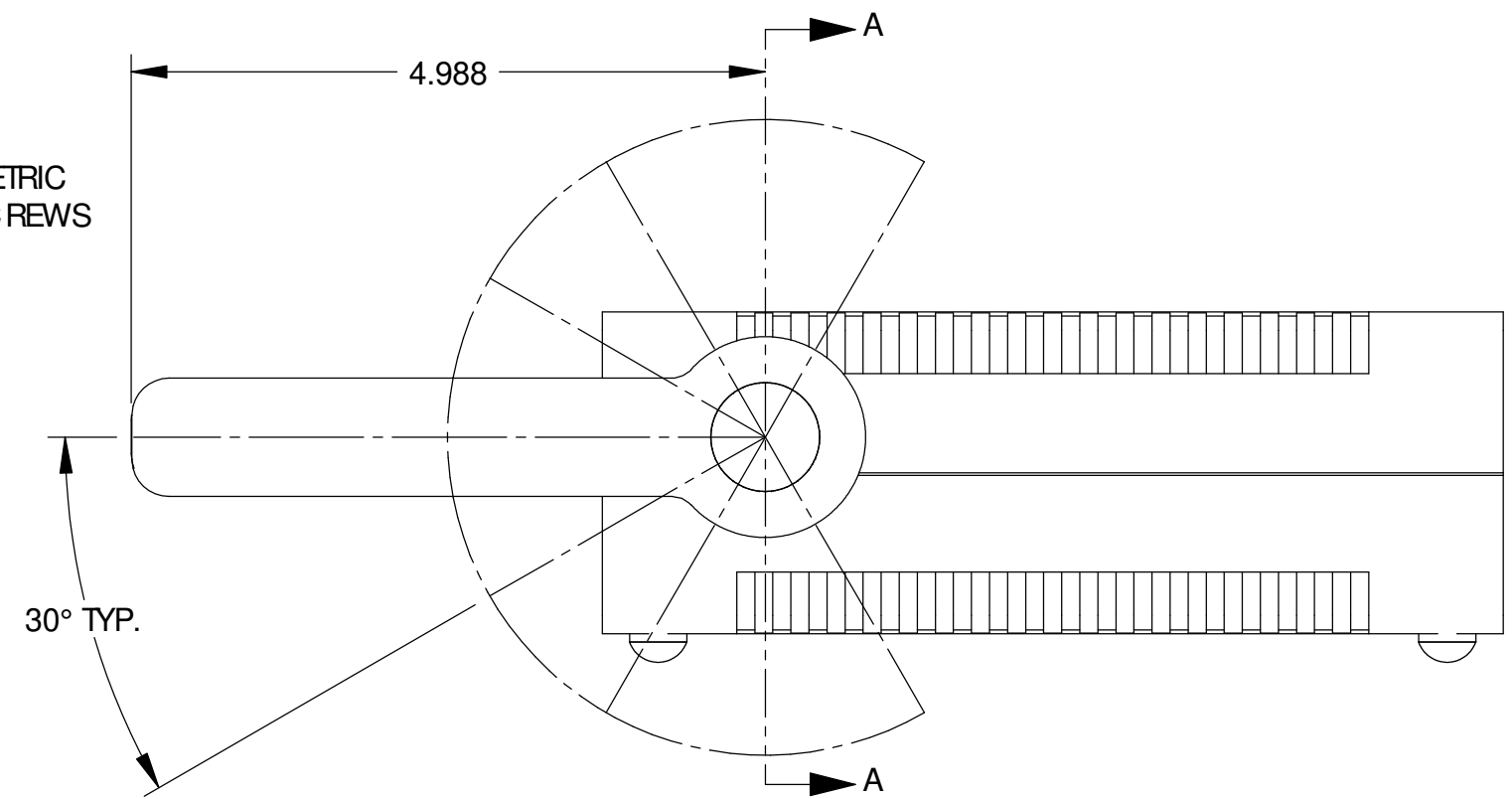
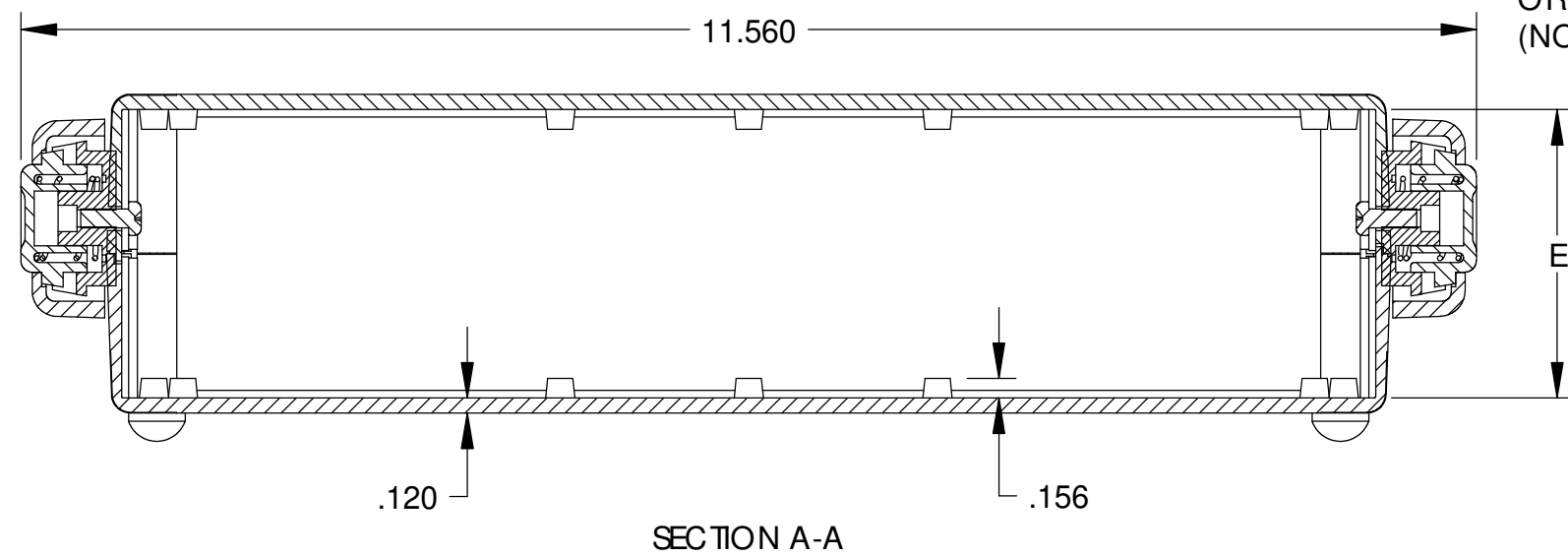
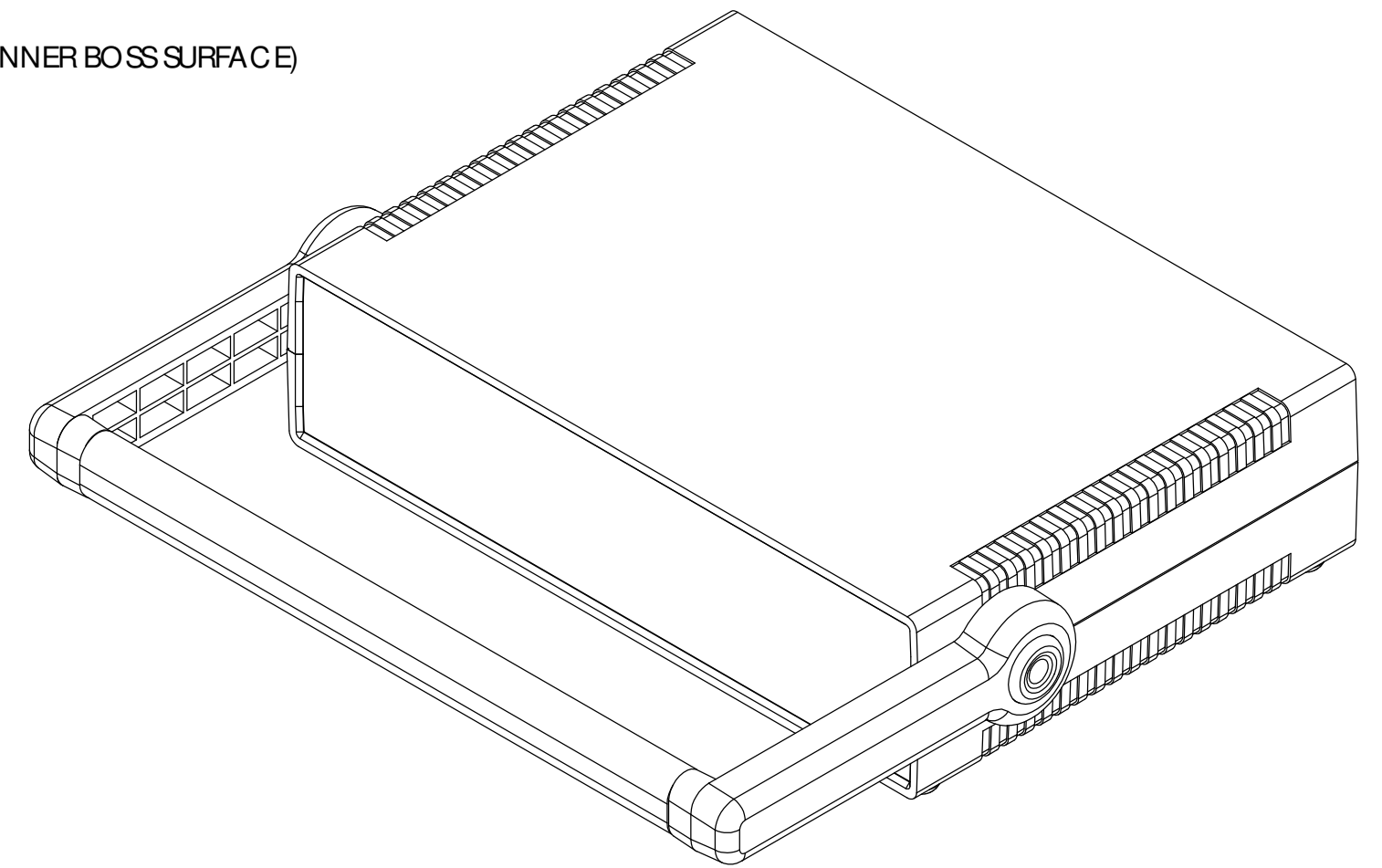
**BOTTOM COVER:**  
 $\phi .248 \nabla .050$   
 $92^\circ \text{ C-SINK } \nabla .665$  (FROM INNER BOSS SURFACE)  
 $\phi .132$  THRU  
 (FAR SIDE 4 PLCS.)

**TOP COVER:**  
 M3 BRASS INSERT (4 PLCS.)



$\phi .218$  BOSS  
 $\phi .090$  HOLE  $\nabla .218$   
 (11) PLCS. BOTH COVERS

BOSS USE EITHER M2.5 METRIC  
 OR #4 STD. SHEET METAL SCREWS  
 (NOT SUPPLIED)



**NOTES:**

- MATERIALS & FINISHES
- COVERS - ABS (LIGHT GREY)  
 UL94-HB FLAMMABILITY RATING
- PANELS - ABS (BLACK)  
 UL94-HB FLAMMABILITY RATING
- HANDLE SUPPORTS - ABS (GREY)  
 UL94-HB FLAMMABILITY RATING
- HANDLE - ALUMINUM EXTRUSION (CLEAR ANODIZE)

**HARDWARE INCLUDED:**

- HANDLE KIT AND (2) M4 x 10mm PAN HEAD MOUNTING SCREWS INCLUDED
- (4) M3 x 25mm FLAT HEAD SCREWS
- (4) RUBBER FEET

ALL DIMENSIONS HAVE  $\pm .015$  TOLERANCE UNLESS OTHERWISE SPECIFIED

PART No.	TOTAL HEIGHT A	COVER HEIGHT B	BASE HEIGHT C	USEABLE PANEL SPACE D	INTERNAL CLEARANCE E
IP-6136	2.530	1.265	1.265	1.978	2.290
IP-6137	3.320	2.055	1.265	2.768	3.080
IP-6138	4.110	2.055	2.055	3.558	3.870