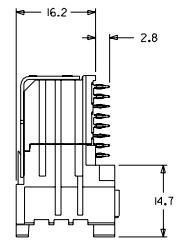
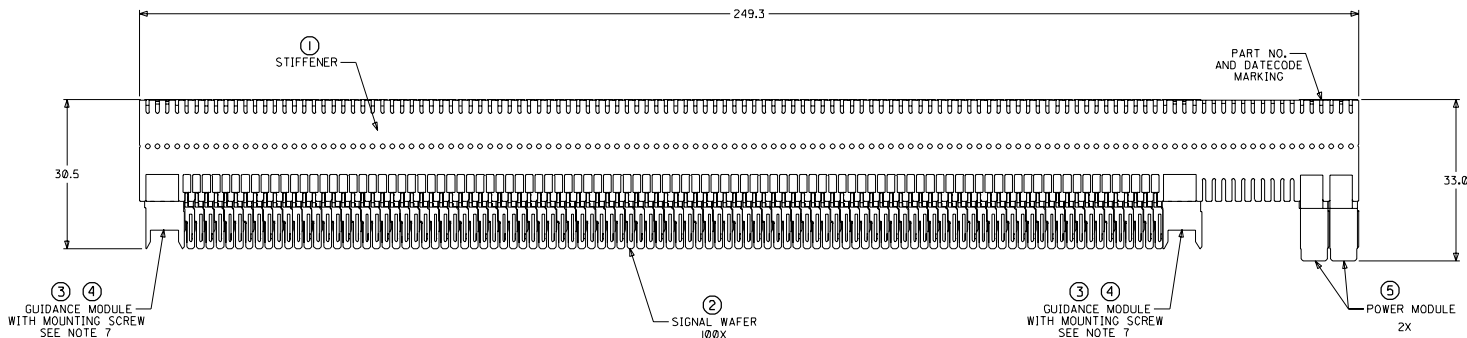
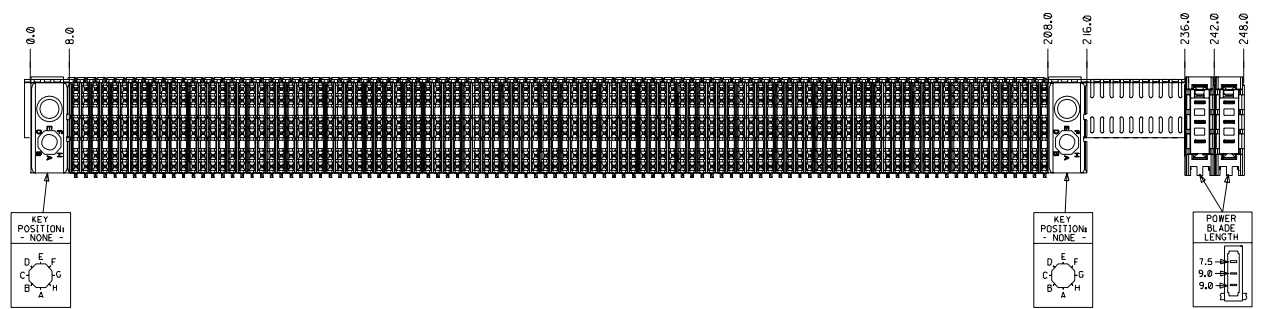


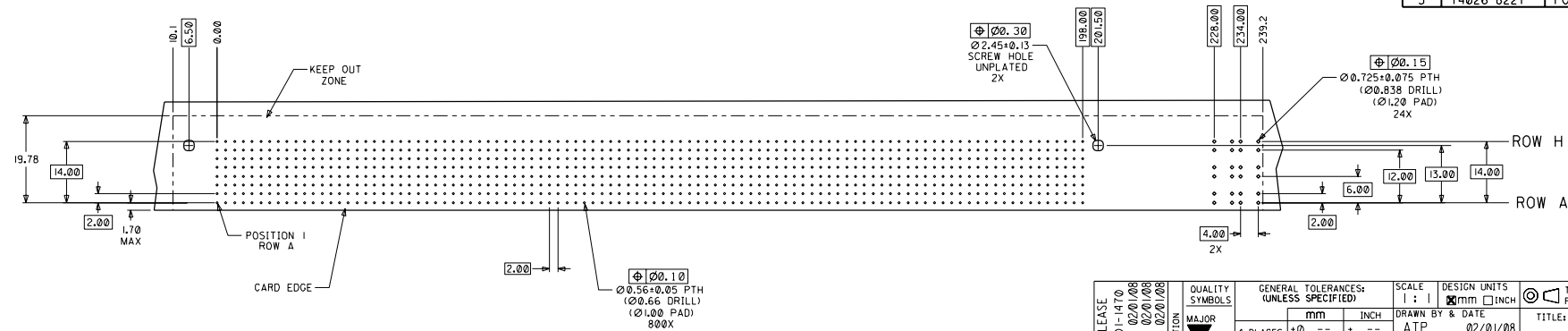
CUSTOMER: TELLUM



- NOTES: (UNLESS OTHERWISE SPECIFIED)
- MATERIALS: HOUSING - LIQUID CRYSTAL POLYMER (LCP), GLASS-FILLED, UL94V-0, BLACK. TERMINALS - HIGH PERFORMANCE COPPER ALLOY. STIFFENER - STAINLESS STEEL.
 - FINISH: SELECTIVE GOLD (Au) IN CONTACT AREA, 0.00076mm MINIMUM THICKNESS; SELECTIVE TIN/LEAD (Sn/Pb) ON PCB TAILS, NICKEL (Ni) OVERALL.
 - REFER TO MOLEX PRODUCT SPECIFICATION PS-74031-999 FOR PERFORMANCE SPECIFICATIONS.
 - REFER TO MOLEX DOCUMENT SD-74681-002 FOR ADDITIONAL DETAIL ON THE HSD8 SIGNAL WAFER.
 - REFER TO MOLEX DOCUMENT SD-74037-006 FOR ADDITIONAL DETAIL ON THE GUIDANCE MODULE.
 - REFER TO MOLEX DOCUMENT SD-74026-002 FOR ADDITIONAL DETAIL ON THE POWER MODULE.
 - MOUNTING SCREWS WILL BE BAGGED WITH EACH CONNECTOR.
 - PARTS ARE PACKAGED IN TUBES PER PK-70873-5041.



ITEM	PART NUMBER	DESCRIPTION	QTY
1	74046-0249	STIFFENER	1
2	74681-0001	HSD8 WAFER	100
3	74037-0008	POLARIZING/GUIDE MODULE	2
4	73726-0000	GUIDE MODULE MNTG SCREW	2
5	74026-8221	POWER MODULE	2



DAUGHTERCARD HOLE PATTERN (CONNECTOR SIDE)

INITIAL RELEASE EC NO. UDT2001-1470 DRAWN: ATP 02/01/08 CHKD: LAURX 02/01/08 APPR: BIXLER 02/01/08	QUALITY SYMBOLS MAJOR: 4 PLACES ±0. -- 2. -- CRITICAL: 3 PLACES ±0. -- 2. -- 2 PLACES ±0. -- 2. -- 1 PLACE ±0. -- 2. --	GENERAL TOLERANCES: UNLESS SPECIFIED mm INCH DRAWN BY & DATE: ATP 02/01/08 CHECKED BY & DATE: LAURX 02/01/08 APPROVED BY & DATE: BIXLER 02/01/08 ANGULAR: ± 2°	SCALE: 1:1 DESIGN UNITS: mm INCH THIRD ANGLE PROJECTION: <input type="checkbox"/> mm <input checked="" type="checkbox"/> mm <input type="checkbox"/> INCH SHT: REV: INCH ONLY CAD ONLY	
	TITLE: 8 ROW HSD DAUGHTERCARD ASSEMBLY SALES DRAWING			MOLEX INCORPORATED
	CAD FILENAME: SD-74680-110		MATERIAL NO.: 74680-0110	DRAWING NO.: SD-74680-110
	DRAFT WHERE APPLICABLE MUST REMAIN WITHIN DIMENSIONS			SHEET NO.: 1 OF 1 SIZE: D