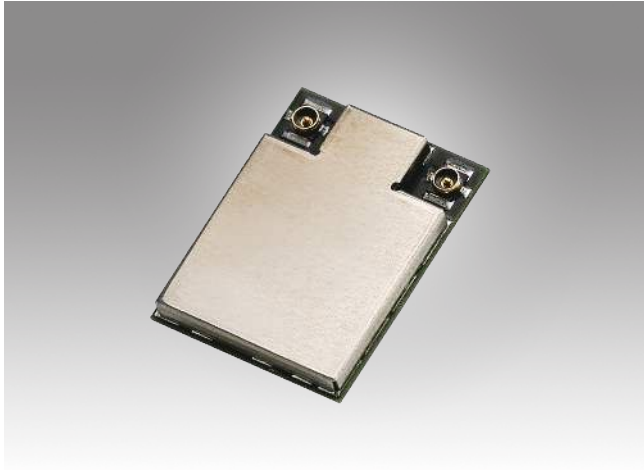


# EWM-W308S01E

802.11 a/b/g/n/ac + Bluetooth 4.2  
M.2 1216 solder down LGA type



## Features

- IEEE 802.11 a/b/g/n/ac + Bluetooth 4.2 HS standard
- 2Tx/ 2Rx
- Up to 866.7 Mbps data rate
- WEP/WPA2, WAPI, 802.11i
- Operating temperature: 0 to 70° C



## Specifications

Main Chipset	Realtek RTL8822BE-CG
Tx/Rx	2Tx/ 2Rx (2 I-PEX MHF4 Connector Receptacle (20449))
Standard Conformance	802.11 a/b/g/n/ac+BT4.2
Form Factor	M.2 1216 solder down LGA
Interface	WiFi: PCI-e BT:USB
Operation Voltage	DC 3.3V ±5%
Antenna	ANT1: WiFi -->TX/RX ANT2: WiFi+BT-->TX/RX
Security	WEP/WPA2, WAPI, 802.11i
O.S Supported	Windows 7/8.1/10
Temperature Ranges	Operation: 0 to 70° C
Dimensions (L x W x H)	12 x 16 x 1.7 mm

## Ordering Information

Part No.	Product Description
EWM-W308S01E	802.11 a/b/g/n/ac, Realtek RTL8822BE-CG, WiFi 2T2R, BT4.2, M.2 1216

## Suggested Antenna and Cable

Part No.	Specifications
1750008717-01	WiFi 2.4 GHz and 5 GHz dipole Antenna
1750008799-01	WiFi Coaxial Cable, 150 mm
1750008653-01	WiFi Coaxial Cable, 200 mm
1750007965-01	WiFi Coaxial Cable, 300 mm