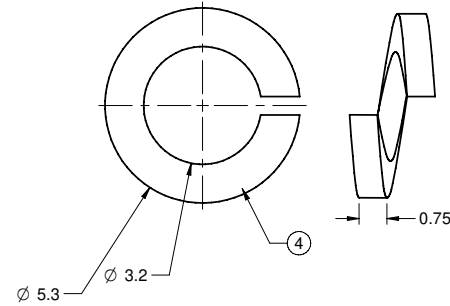
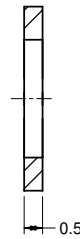
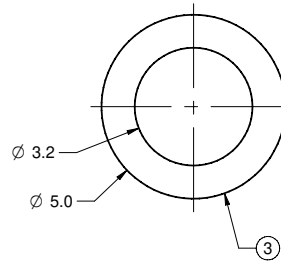
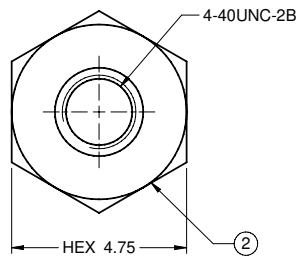
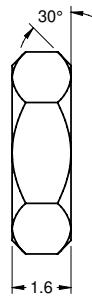
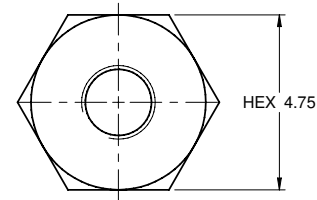
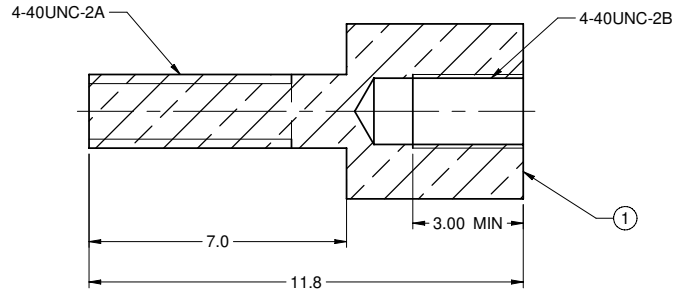


PART NUMBER	ITEM ① BOLT	ITEM ② NUT	ITEM ③ FLAT-WASHER	ITEM ④ SPRING-WASHER
40-98440F-C	BRASS NICKEL PLATED	STEEL NICKEL PLATED	STEEL NICKEL PLATED	STEEL NICKEL PLATED

REV	ECO	DATE
002	ECO-11-0127	07/26/2011
003	ECO-12-0335	12/19/2012
004	ECO-18-0023	09/04/2018



NOTES:

1. PRODUCT SHOULD BE RoHS COMPLIANCE.
2. PACKAGING REQUIREMENT FOLLOWS ENGINEER DOCUMENT P/N 836-40200001XX

40-98440F-C	F SCREW LOCKS,.30"(50 SET)
40-98440F	F SCREW LOCKS,.30"(1 SET)

<p>This PROPRIETARY Document is property of Cinch Connectivity Solutions. It is intended for internal use only. No part of this document may be reproduced or transmitted in any form or by any means, electronic or mechanical, including photocopying, recording, or by any information storage and retrieval system, without permission in writing from Cinch Connectivity Solutions.</p> <p>INTERPRET DRAWING IN ACCORDANCE WITH ASME Y14.2-2009.</p>	Model No. 40-98440F-C	AIM-Cambridge		
	RoHS2 <input checked="" type="checkbox"/> 2011/65/EU	Cage Code N/A	Title: F SCREW LOCKS, .30" (1 SET)	
	UNLESS OTHERWISE SPECIFIED: DIMENSIONS IN INCHES X ±.5 X ±.2 XX ±.1 ANGLES 5°	3RD ANGLE PROJECTION	Drawing No. 40-98440F-C	Rev. 004
	Date: 09/04/2018	Drawn By: Betty Yu	Size B	DO NOT SCALE DRAWING
		Workmanship Std. N/A	Sheet 2 of 2	