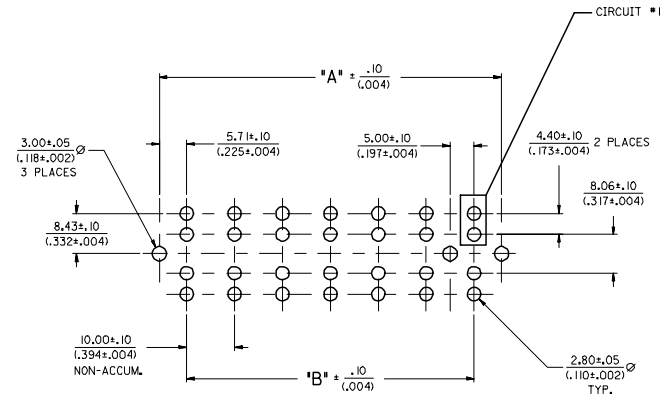
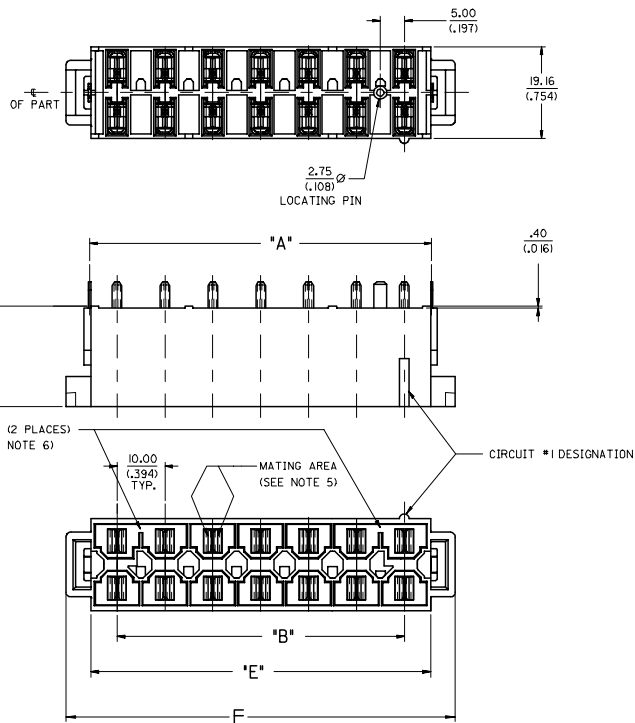


MATERIAL NUMBER	CIRCUITS	DIM. 'A'	DIM. 'B'	DIM. 'C'	DIM. 'D'	DIM. 'E'	DIM. 'F'	PCB THICKNESS	POLARIZING SLOTS	
									PRESENT	QTY.
44537-1001	6	31.41/(1.237)	20.00/(.787)	8.30/(.328)	3.40/(.134)	30.90/(1.217)	41.3/(1.63)	6.00/(.236) MUST BE MODIFIED TO ACCEPT 3.4mm CLIP	YES	1
44537-1002	8	41.41/(1.630)	30.00/(1.181)	8.30/(.328)	3.40/(.134)	40.90/(1.610)	51.3/(2.01)		YES	2
44537-1003	10	51.41/(2.024)	40.00/(1.575)	8.30/(.328)	3.40/(.134)	50.90/(2.004)	61.3/(2.41)		YES	2
44537-1004	12	61.41/(2.418)	50.00/(1.969)	8.30/(.328)	3.40/(.134)	60.90/(2.398)	71.3/(2.81)		YES	2
44537-1005	14	71.41/(2.811)	60.00/(2.362)	8.30/(.328)	3.40/(.134)	70.90/(2.791)	81.3/(3.20)		YES	2

NOTES:

- MATERIALS:
HOUSING: 30% GLASS FILLED NYLON 4/6, U.L. 94V-0, COLOR: BLACK.
TERMINAL: ALLOY 151 PLATING: TIN-LEAD OVER NICKEL.
- PRODUCT SPEC.: PSX-42815-0001
- USES STANDARD 42874 MINI-FIT SR. HEADER TERMINALS.
- PART MATES WITH MOLEX RECEPTACLE 43914.
- FOR HIGH VIBRATION APPLICATIONS, MOLEX STRONGLY RECOMMENDS THE USE OF NYE LUBRICANT NYOGEL 760G ON THE MATING SURFACES OF THE TERMINALS.
- POLARIZING SLOTS TO BE LOCATED BETWEEN CIRCUITS ON EITHER END OF HOUSING OF THE CIRCUIT ROW, AS SHOWN.
EXCEPTION: THE 6 CIRCUIT HOUSING WILL HAVE A SINGLE SLOT ON THE CIRCUIT 1 END ONLY.



RECOMMENDED P.C. BOARD PLATED-THRU HOLE LAYOUT

(14 CIRCUIT LAYOUT SHOWN)

ADDED DIM. F EC NO.: UCP2006-1765 DRAWN: JOMERL 2006/01/31 CHKD: JOMERL 2006/01/31 APPR: JOMERL 2006/02/06	QUALITY SYMBOLS	GENERAL TOLERANCES (UNLESS SPECIFIED)	DIMENSION STYLE	SCALE	DESIGN UNITS	THIRD ANGLE PROJECTION															
	$\nabla=0$ $\nabla=0$	<table border="1"> <tr> <th></th> <th>mm</th> <th>INCH</th> </tr> <tr> <td>4 PLACES</td> <td>± .008</td> <td>± .0008</td> </tr> <tr> <td>3 PLACES</td> <td>± .010</td> <td>± .0010</td> </tr> <tr> <td>2 PLACES</td> <td>± .020</td> <td>± .0020</td> </tr> <tr> <td>1 PLACE</td> <td>± .050</td> <td>± .0050</td> </tr> </table>		mm	INCH	4 PLACES	± .008	± .0008	3 PLACES	± .010	± .0010	2 PLACES	± .020	± .0020	1 PLACE	± .050	± .0050	MM/IN	2:1	METRIC	<input checked="" type="checkbox"/> THIRD ANGLE <input type="checkbox"/> FIRST ANGLE
		mm	INCH																		
	4 PLACES	± .008	± .0008																		
	3 PLACES	± .010	± .0010																		
2 PLACES	± .020	± .0020																			
1 PLACE	± .050	± .0050																			
DESCRIPTION	DRAWN BY	CHECKED BY	APPROVED BY	DATE	TITLE																
	JOMERL	JOMERL	JOMERL	8/10/99	VERTICAL HEADER DUAL ROW, 6-14 CIRCUIT MINI-FIT SR.																
				8/10/99	MOLEX INCORPORATED																
DRAFT WHERE APPLICABLE MUST REMAIN WITHIN DIMENSIONS	SEE CHART	MATERIAL NO.	DOCUMENT NO.	SHEET NO.																	
		SD-44537-001	SD-44537-001	1 OF 1																	
THIS DRAWING CONTAINS INFORMATION THAT IS PROPRIETARY TO MOLEX INCORPORATED AND SHOULD NOT BE USED WITHOUT WRITTEN PERMISSION																					