

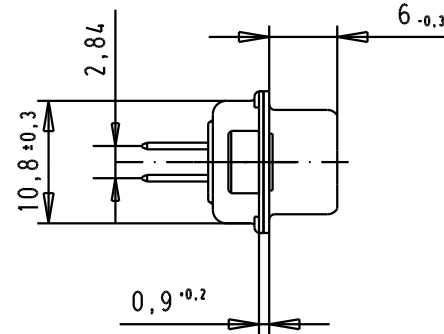
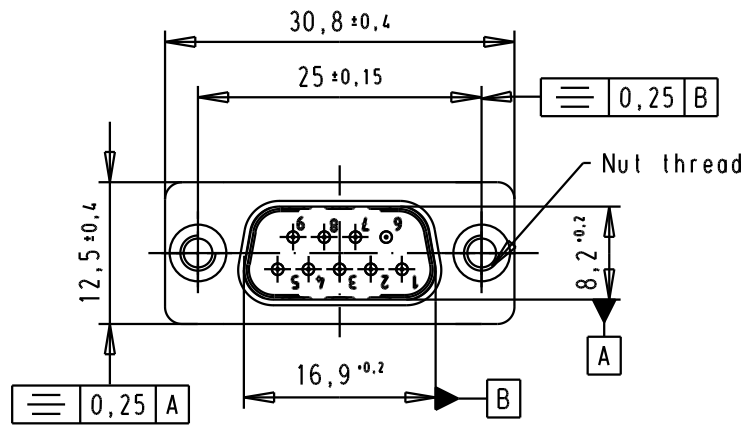
5

4

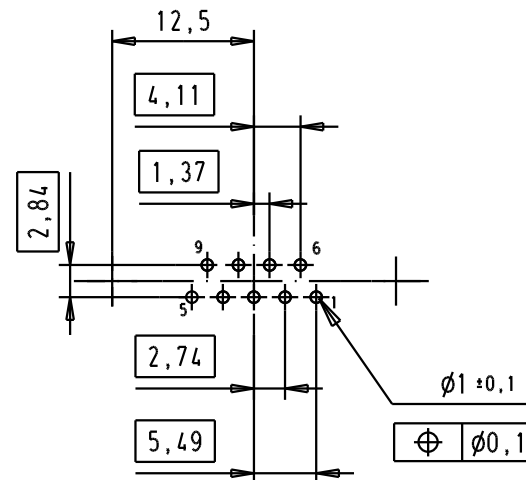
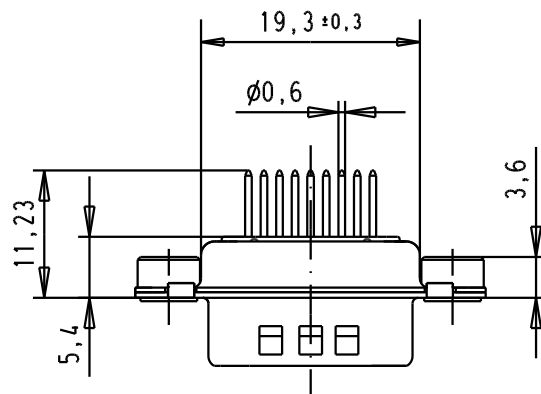
3

2

1



PCB Layout, Component side



## SPECIFICATION

Mating Cycles	500
Filter type	C
Capacitance	47pf ± 20%
Working Voltage	100v
Current Rating	7,5A
Insulation Resistance	>1GΩ

FREQUENCY (MHz)	ATTENUATION dB
5	-
10	-
50	-
100	-
500	30dB
1000	35dB

Dat. Name

Detail. 8-JUL-02 CV

Insp.

Stand.

All Dim. in mm  
Orig. Size DIN A 4D-Sub, male, straight,  
9 Poles, solder pins,  
tin plated shell with  
dimples and clinch nutsMo?Mslab/  
Scale

1.5:1

09641227218

M3

33241

14/10/05

JMDR

09641227217

UNC 4-40

31058

8-JUL-02

CV

HARTING EURL  
F-95972 Paris

TB 0964122721x

Blatt/ Page

3 / 3

Part number

Nut thread

Mod.

Dat.

Name

Sub.