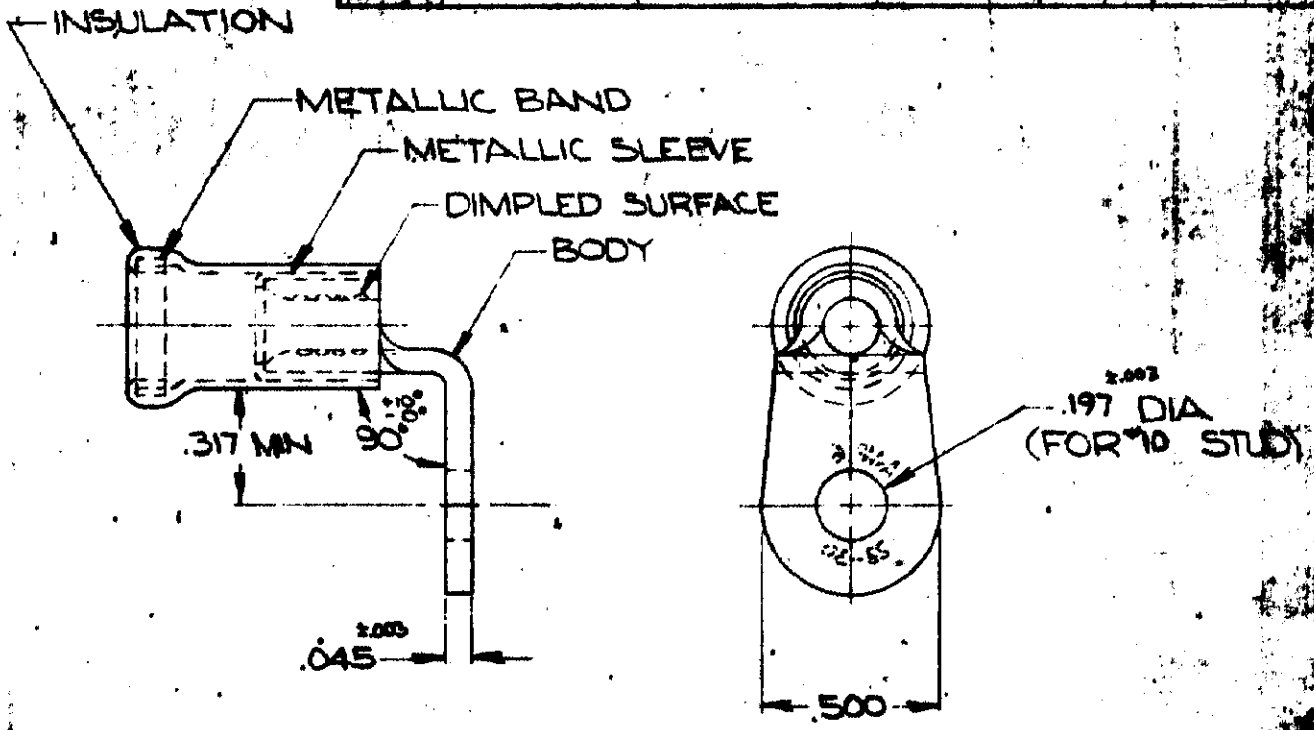


MADE IN AMERICAN PROJECTION

G *(Signature)*

BY AMP INCORPORATED. ALL RIGHTS RESERVED. AMP PRODUCTS COVERED BY PATENTS AND/OR TRADE MARKS PENDING.

REVISIONS			
LTR	DESCRIPTION	DATE	APPROVED
B	REDRAW & REVISED R-8563	1-5-70	<i>(Signature)</i>
C	REV 8-1480	5-5-80	JT



FOR .317 MAX WIRE INS. DIA

WIRE TERMINAL	322887	BODY: COPPER (QQ-C-576)
		TIN PL (MIL-T-10727)
		INSULATION: PVC COLOR: BLUE
		METALLIC SLEEVE: COPPER (QQ-C-576)
		METALLIC BAND: STEEL QQ-S-698 (ASTM A109)
QTY	DESCRIPTION	PART NO.
		MATERIAL & FINISH
UNLESS OTHERWISE SPECIFIED DIMENSIONS ARE IN INCHES TOLERANCES ON: DECIMALS ± .008 ANGLES ± 5°	CONTRACT NO.	AMP
	DR. <i>(Signature)</i> 11-10-69	
	CHK <i>(Signature)</i> 1-5-70	NAME
	APPD <i>(Signature)</i> 1-6-70	WIRE TERMINAL
MATERIAL	RE <i>(Signature)</i> 1-7-70	AMPLI-BOND - RING TONGUE - BENT 90°
SEE TABLE	DSGN APPD	WIRE SIZE: #6
	SIZE	CODE IDENT NO.
	A	00779
		NUMBER
		322887