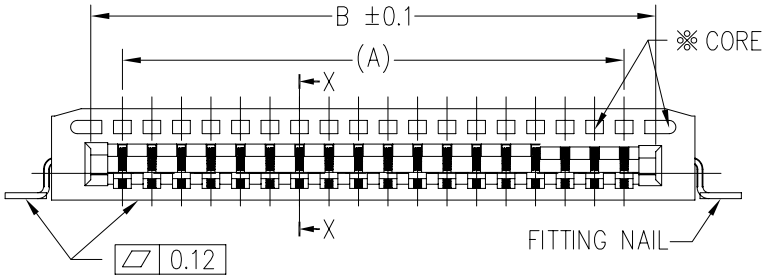
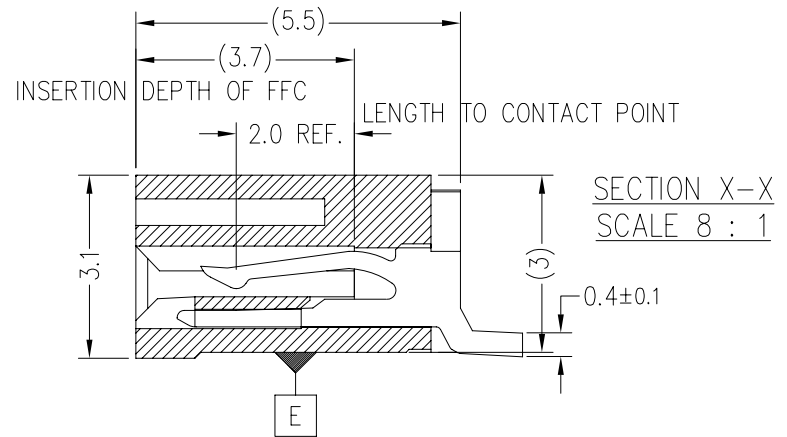
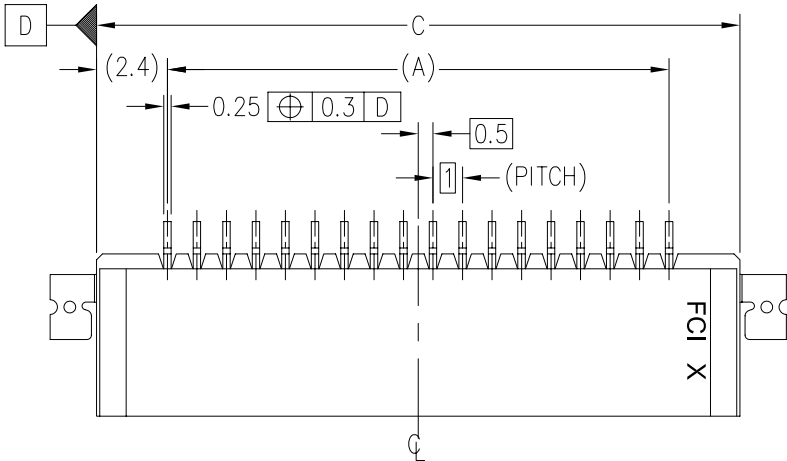


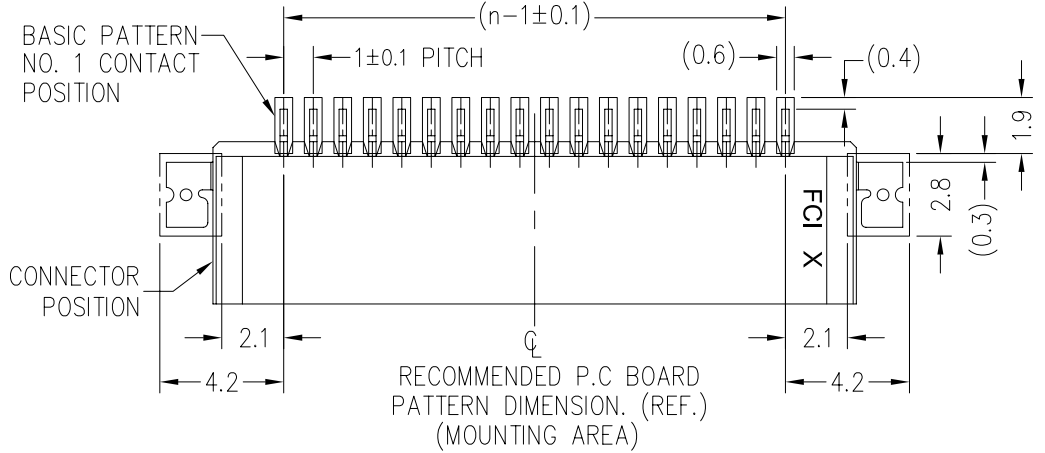


FCIconnect.com

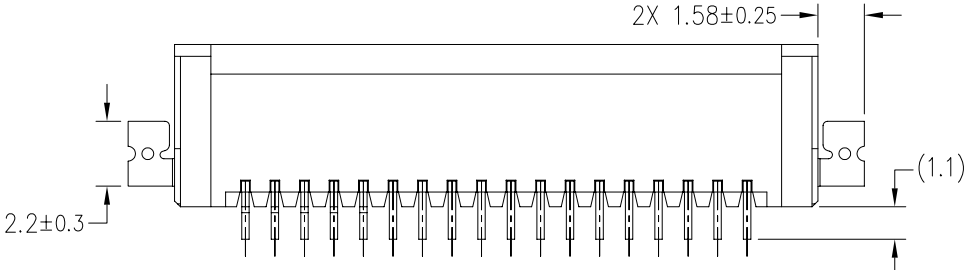
Copyright FCI



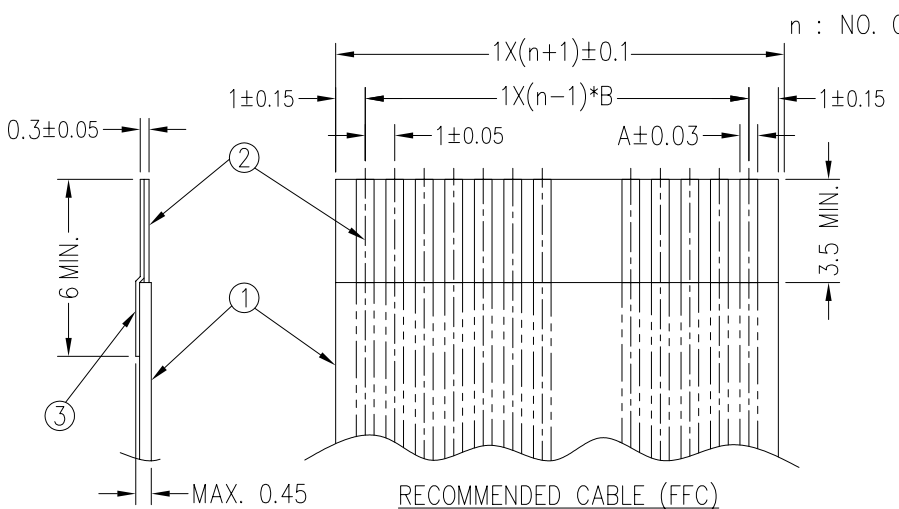
(FLATNESS OF CONTACT TERMINAL AND MOUNTING PLATE)
 MISALIGNMENT OF SOLDER TAIL AND FITTING NAIL FROM DATUM E
 : UPPER DIRECTION .10 MAX. , LOWER DIRECTION 0.15 MAX.
 ※ <<ALTERNATE CORE AND RIB CONSTRUCTION, NON-FUNCTION,
 AND OR FOR PLASTIC MOLDING PROCESS PURPOSE>>



RECOMMENDED SOLDER PASTE
 THICK 0.15mm [.006"] MIN.



mat'l. code				tolerances unless otherwise specified			projection	product family			
ltr	ecn no	dr	date	angles		linear	mm	FCI/FPC			
A	S09-0060	DGOH	090331	X±2'				.XX±.20	title		
B	S10-0107	DGOH	100513				scale 4:1	1mm SPACING SMT FFC/FPC CONNECTOR			
				dr	DENNIS GOH	081222			dwg no		
				enr	DENNIS GOH	100513			sheet 1 of 6		
				chr	DENNIS GOH	100513			size		
				appd	JOEY NG	100513			A4		
									type		
									Product Customer Drawing		
sheet index	revision sheet	B	B	B	B	B					
		1	2	3	4	5					



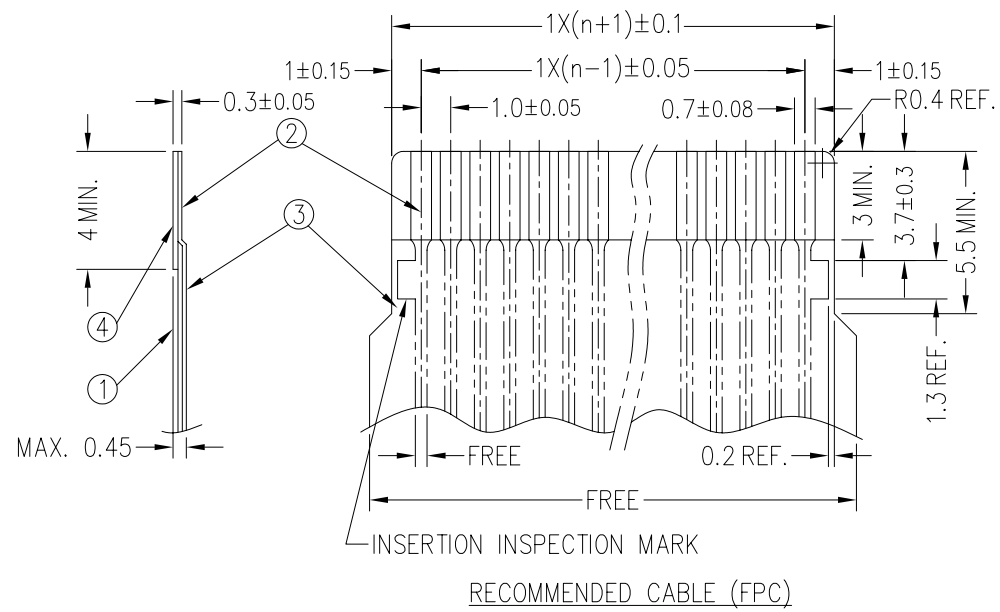
(NOTE C)	DIMENSION A	TOLERANCE B
1	0.7	0.1
2	0.6	0.07

RECOMMENDED CABLE (FFC)

PART NO.	DESCRIPTION	MATERIAL	NOTE
1	INSULATOR	FLAME RESISTING POLYESTER OR EQUIVALENT	-----
2	CONDUCTOR	COPPER FOIL	PLATING: TIN OR SOLDER 1um MIN.
3	SUPPORTING TAPE	FLAME RESISTING POLYESTER OR EQUIVALENT	-----

NOTES:

- A.) NO BURR AT EACH PORION.
- B.) NO PEELING IN COMMON USE.
- C.) BOTH COMBINATION IS ALLOWED.



RECOMMENDED CABLE (FPC)

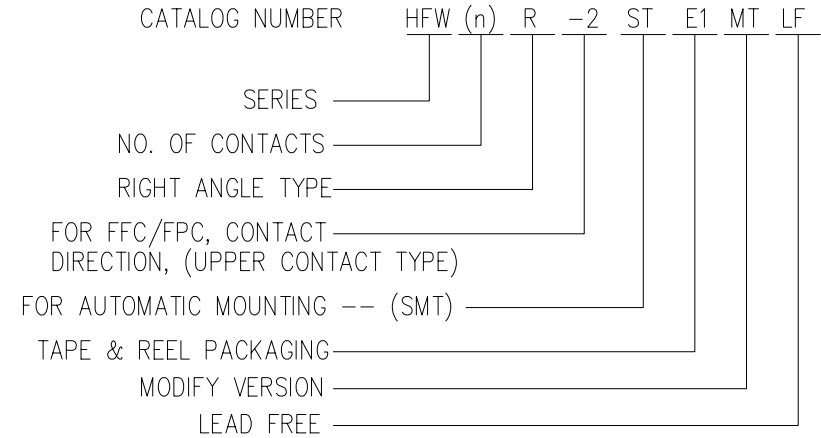
PART NO.	DESCRIPTION	MATERIAL	THICKNESS (um)
1	BASE FILM	POLYIMIDE OR POLYESTER OR EQUIVALENT	25
2	CONDUCTOR	COPPER FOIL (PLATING: SOLDER 1um MIN.)	35
3	OVERLAY	POLYIMIDE OR POLYESTER OR EQUIVALENT	-----
4	SUPPORTING TAPE	POLYIMIDE OR POLYESTER OR EQUIVALENT	188

mat'l. code				tolerances unless otherwise specified			projection		product family FFC/FPC			
lfr	ecn no	dr	date	angles	linear	.XX±.20	mm	scale 4:1	title			
B									1mm SPACING SMT FPC/FFC CONNECTOR			
				dr	DENNIS GOH	081222			dwg no		sheet 2 of 6	size
				enr	DENNIS GOH	100513			10094688			A4
				chr	DENNIS GOH	100513			type		Product Customer Drawing	
				appd	JOEY NG	100513						
sheet index		revision sheet										



Copyright FCI

PART NO.	PARTS NAME	MATERIAL	Q'TY	NOTE
1	HOUSING	HIGH TEMPERATURE THERMOPLASTIC REINFORCED (UL94V-0)	1	COLOR: BLACK
2	CONTACT	PHOSPHOR BRONZE	n	PLATING (LEAD FREE)
3	SMT CLIP	BRASS	2	



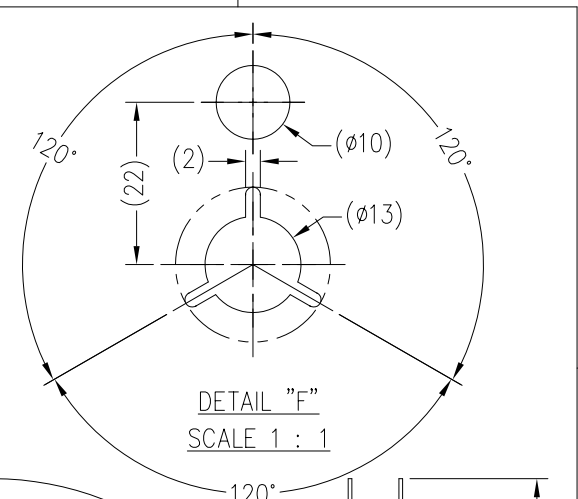
30	HFW30R-2STE1MTLF	29	31.14	33.8	
29	HFW29R-2STE1MTLF	28	30.14	32.8	
28	HFW28R-2STE1MTLF	27	29.14	31.8	
27	HFW27R-2STE1MTLF	26	28.14	30.8	
26	HFW26R-2STE1MTLF	25	27.14	29.8	
25	HFW25R-2STE1MTLF	24	26.14	28.8	
24	HFW24R-2STE1MTLF	23	25.14	27.8	
23	HFW23R-2STE1MTLF	22	24.13	26.8	
22	HFW22R-2STE1MTLF	21	23.14	25.8	
21	HFW21R-2STE1MTLF	20	22.14	24.8	
20	HFW20R-2STE1MTLF	19	21.14	23.8	
19	HFW19R-2STE1MTLF	18	20.14	22.8	
18	HFW18R-2STE1MTLF	17	19.14	21.8	
17	HFW17R-2STE1MTLF	16	18.14	20.8	
16	HFW16R-2STE1MTLF	15	17.14	19.8	
15	HFW15R-2STE1MTLF	14	16.14	18.8	
14	HFW14R-2STE1MTLF	13	15.14	17.8	
13	HFW13R-2STE1MTLF	12	14.14	16.8	
12	HFW12R-2STE1MTLF	11	13.14	15.8	
11	HFW11R-2STE1MTLF	10	12.14	14.8	
10	HFW10R-2STE1MTLF	9	11.14	13.8	
9	HFW9R-2STE1MTLF	8	10.14	12.8	
8	HFW8R-2STE1MTLF	7	9.14	11.8	
7	HFW7R-2STE1MTLF	6	8.14	10.8	
6	HFW6R-2STE1MTLF	5	7.14	9.8	
5	HFW5R-2STE1MTLF	4	6.14	8.8	
4	HFW4R-2STE1MTLF	3	5.14	7.8	
D	CIRCUIT	CATALOG NO.	A	B	C

NOTES

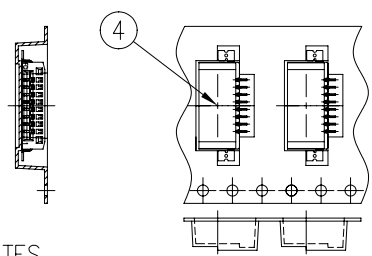
- THIS PRODUCT IS THE CONNECTOR DESIGNED TO TERMINATE FPC/FFC AND COPE WITH AUTOMATIC MOUNTING (SMT).
- MISALIGNMENT OF SOLDER TAIL AND SMT CLIP FROM DATUM E : UPPER DIRECTION 0.10 MAX. , LOWER DIRECTION 0.15 MAX.
- THIS PRODUCT IS UPPER CONTACT TYPE CONNECTOR.
- THIS PRODUCT MEETS EUROPEAN UNION DIRECTIVES AND OTHER COUNTRY REGULATIONS AS DESCRIBED IN GS-22-008.
- THE HOUSING WILL WITHSTAND EXPOSURE TO 260°C PEAK TEMPERATURE FOR 10 SECONDS IN A REFLOW SOLDERING OVEN.
- THIS CATALOG NO. INDICATES PLASTIC TAPE PACKAGED CONNECTOR.
- A SYMBOL WILL BE NEXT TO ANY DIMENSION, VIEW, OR NOTE WHICH HAS BEEN MODIFIED WITH THE CURRENT DRAWING REVISION.

mat'l. code				tolerances unless otherwise specified			projection	product family		
lfr	ecn no	dr	date	angles	linear	.XX±.20	mm	FFC/FPC		
B								title		
				x'±2'			scale 4:1	1mm SPACING SMT FPC/FFC CONNECTOR		
				dr	DENNIS GOH	081222		dwg no		
				enr	DENNIS GOH	100513		sheet 3 of 6		
				chr	DENNIS GOH	100513		size		
				appd	JOEY NG	100513		A4		
sheet index		revision sheet		type Product Customer Drawing						

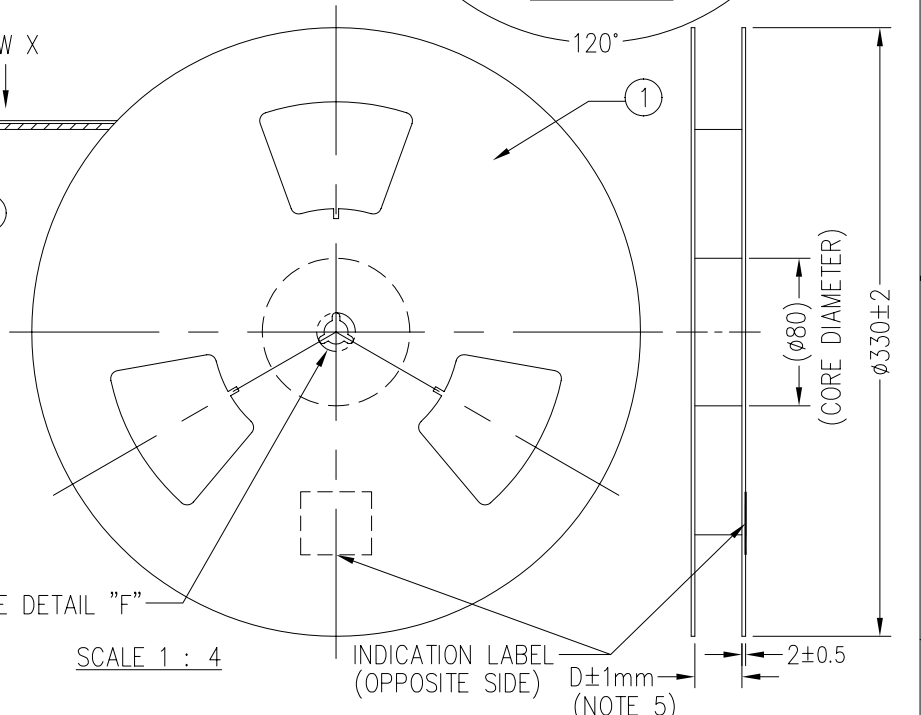
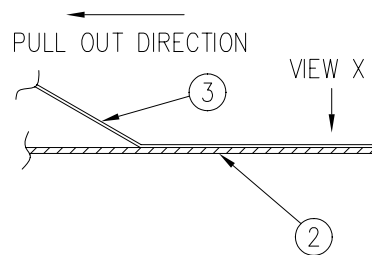
P/N:	PARTS NAME	CATALOG NO.	MATERIAL	QUANTITY	NOTE
①	REEL	-----	POLYSTYRENE (PS) <RECYCLE MATERIAL CONTAINED>	01	COLOR: BLACK
②	PLASTIC (EMBOSSED) CARRIER TAPE	-----	POLYSTYRENE (0.4mm Thick)	-----	COLOR: (CLEAR) TRANSPARENCY
③	COVER (TOP TAPE)	-----	POLYESTER	-----	COLOR: (CLEAR) TRANSPARENCY
④	CONNECTOR	HFW__R-2STE1MTLF	SEE ATTACHED DRAWING	1,000PCS/REEL	UPPER CONTACT TYPE



UNLESS OTHERWISE SPECIFIED: ±5, ANGLE ±5°
TOLERANCES



SCALE 4 : 1



NOTES

- THIS IS PLASTIC TAPE PACKAGED CONNECTOR DESIGNED TO TERMINATE FPC/FFC AND COPEs WITH AUTOMATIC MOUNTING (SMT).
- SEE JIS C 0806 (PACKING OF ELECTRONICS COMPONENTS ON CONTINUOUS TAPES, SURFACE MOUNT DEVICES) FOR SHAPE AND DIMENSIONS OF PLASTIC (EMBOSSED) TAPE AND REEL.
- LEAD TAPE LENGTH
- PEELING OFF FORCE OF TOP TAPE TAPE: 0.1N~0.7N(10.2gf~71.4gf) (PEELING DIRECTION AS SHOWN IN FOLLOWING FIG.) THIS REQUIREMENT SHOULD BE APPLIED AT SHIPMENT. PEEL OFF SHOULD NOT BE ALLOWED, DURING TRANSPORTATION.
- D±1mm DIMENSION IS PORTION OF THE CORE.

mat'l. code		tolerances unless otherwise specified		projection	product family
lfr	ecn no	dr	date		FPC/FPC
B					title
				mm	1mm SPACING SMT FPC/FFC CONNECTOR
				scale 4:1	dwg no
					sheet 4 of 6
					size
					10094688
					A4
					type
					Product Customer Drawing
sheet index	revision sheet				

A

B

C

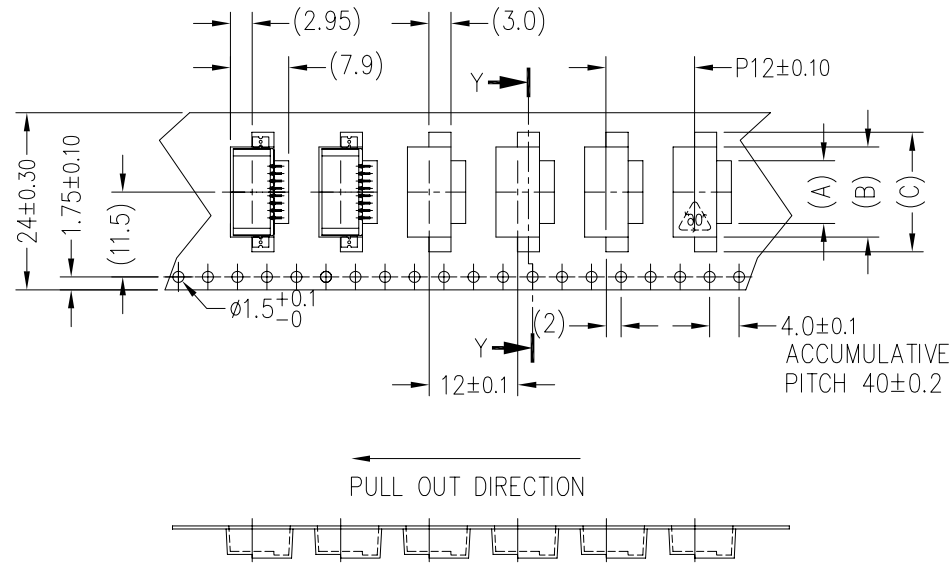
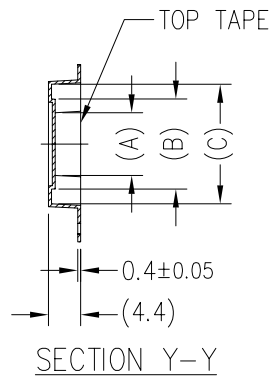
D

A

B

C

D



24mm WIDTH CARRIER TAPE

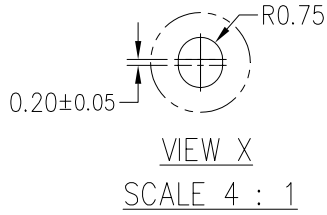


FCIconnect.com

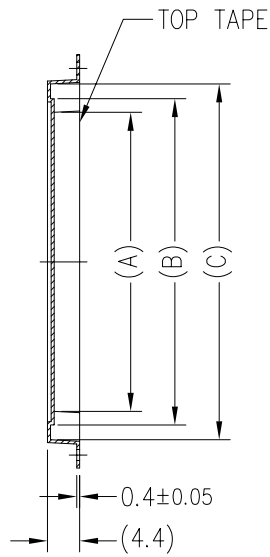
Copyright FCI

10	HFW10R-2STE1MTLF	10.5	14.2	18.2	25.5	24
9	HFW9R-2STE1MTLF	9.5	13.2	17.2		
8	HFW8R-2STE1MTLF	8.5	12.2	16.2		
7	HFW7R-2STE1MTLF	7.5	11.2	15.5		
6	HFW6R-2STE1MTLF	6.5	10.2	14.2		
5	HFW5R-2STE1MTLF	5.5	9.2	13.2		
4	HFW4R-2STE1MTLF	4.5	8.2	12.2		
CIRCUIT	CATALOG NO.	(A)	(B)	(C)	D±1mm REEL CORE	CARRIER TAPE WIDTH

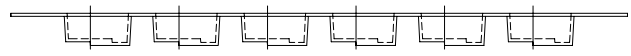
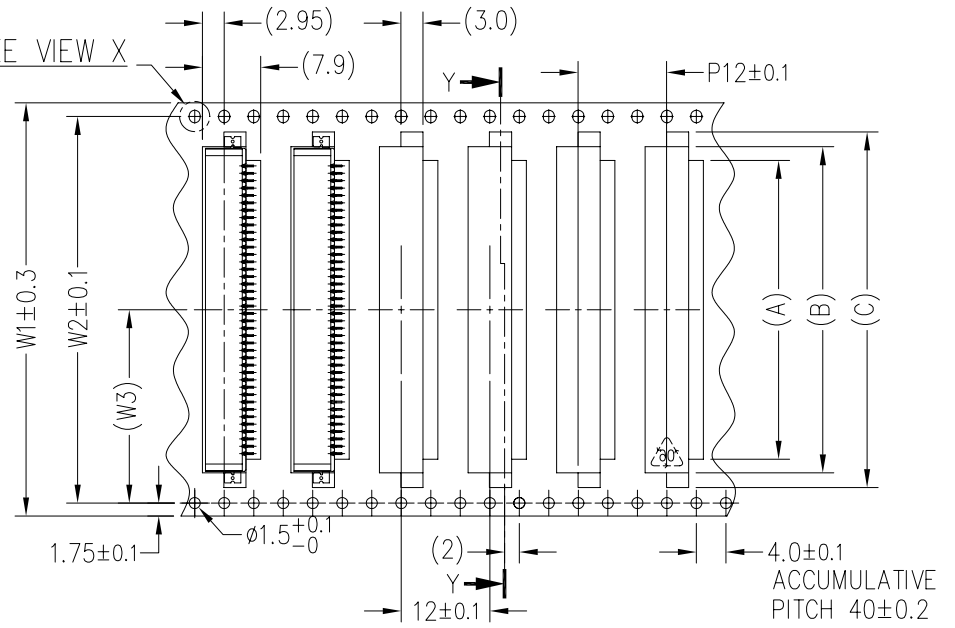
mat'l. code				tolerances unless otherwise specified			projection	product family			
lfr	ecn no	dr	date	angles	linear	.XX±.20	mm	FCI/FPC			
B								title			
				X'±2'			scale 4:1	1mm SPACING SMT FPC/FFC CONNECTOR			
				dr	DENNIS GOH	081222		dwg no		sheet 5 of 6	size
				enr	DENNIS GOH	100513		10094688			A4
				chr	DENNIS GOH	100513		type Product Customer Drawing			
				appd	JOEY NG	100513					
sheet index	revision sheet										



SECTION Y-Y



SEE VIEW X



32mm, 44mm, & 56mm WIDTH CARRIER TAPE

30	HFW30R-2STE1MTLF	30.5	34.2	38.2	57.5	56	52.4	26.2
29	HFW29R-2STE1MTLF	29.5	33.2	37.2				
28	HFW28R-2STE1MTLF	28.5	32.2	36.2				
27	HFW27R-2STE1MTLF	27.5	31.2	35.2				
26	HFW26R-2STE1MTLF	26.5	30.2	34.2				
25	HFW25R-2STE1MTLF	25.5	29.2	33.2	45.5	44	40.4	20.2
24	HFW24R-2STE1MTLF	24.5	28.2	32.2				
23	HFW23R-2STE1MTLF	23.5	27.2	31.2				
22	HFW22R-2STE1MTLF	22.2	26.2	30.2				
21	HFW21R-2STE1MTLF	21.5	25.2	29.2				
20	HFW20R-2STE1MTLF	20.5	24.2	28.2				
19	HFW19R-2STE1MTLF	19.5	23.2	27.2				
18	HFW18R-2STE1MTLF	18.5	22.2	26.2				
17	HFW17R-2STE1MTLF	17.5	21.2	25.2				
16	HFW16R-2STE1MTLF	16.5	20.2	24.2				
15	HFW15R-2STE1MTLF	15.5	19.2	23.2				
14	HFW14R-2STE1MTLF	14.5	18.2	22.2				
13	HFW13R-2STE1MTLF	13.5	17.2	21.2				
12	HFW12R-2STE1MTLF	12.5	16.2	20.2				
11	HFW11R-2STE1MTLF	11.5	15.2	19.2				
CIRCUIT	CATALOG NO.	(A)	(B)	(C)	D±1mm REEL CORE	W1	W2	(W3)
						CARRIER TAPE		

mat'l. code				tolerances unless otherwise specified			projection	product family FPC/FPC			
lfr	ecn no	dr	date	angles	linear	.XX±.20	mm	title			
B								X'±2'	scale 4:1	1mm SPACING SMT FPC/FPC CONNECTOR	
				dr	DENNIS GOH	081222		dwg no		sheet 6 of 6	size
				enr	DENNIS GOH	100513		10094688		A4	
				chr	DENNIS GOH	100513					
				appd	JOEY NG	100513		type Product Customer Drawing			
sheet index	revision sheet										