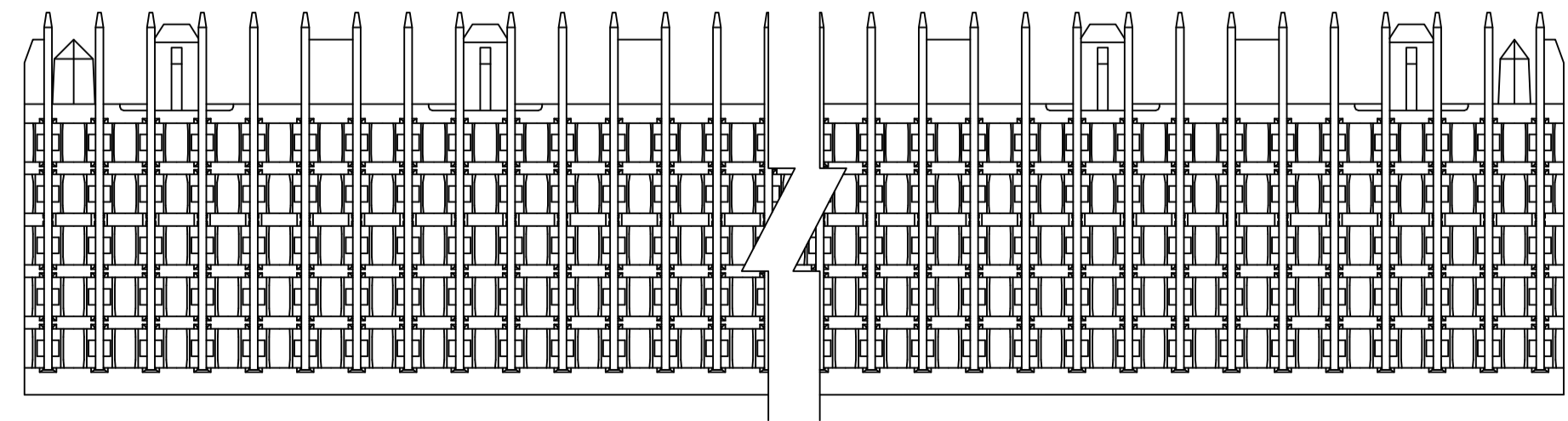
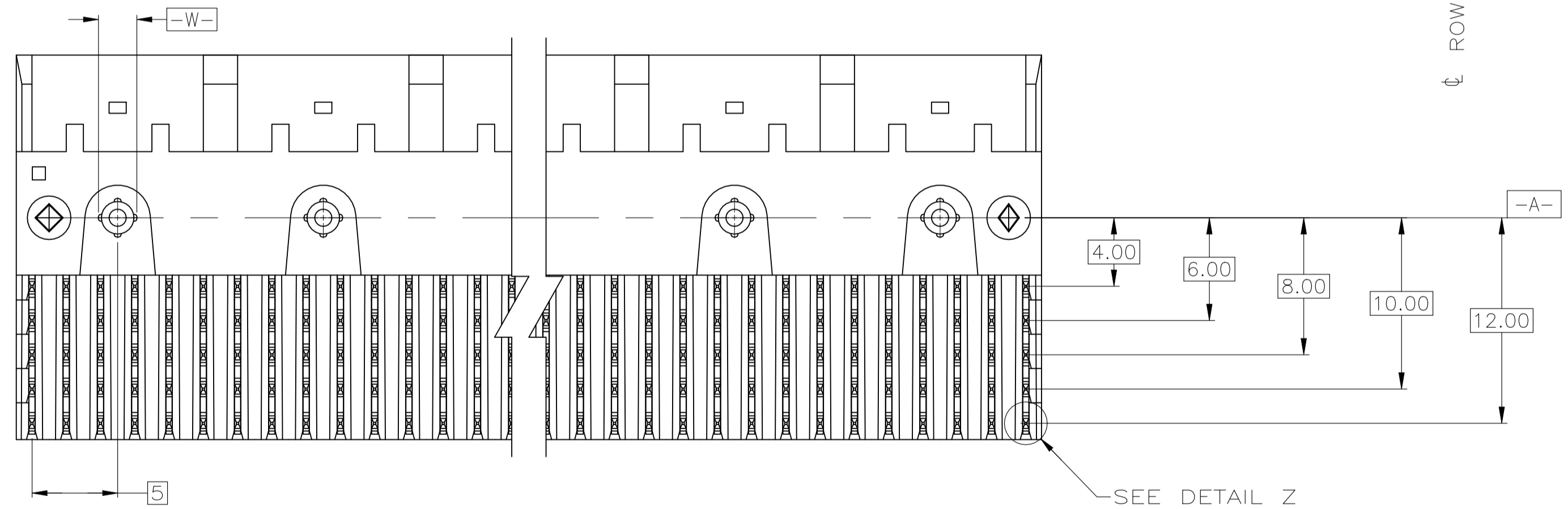
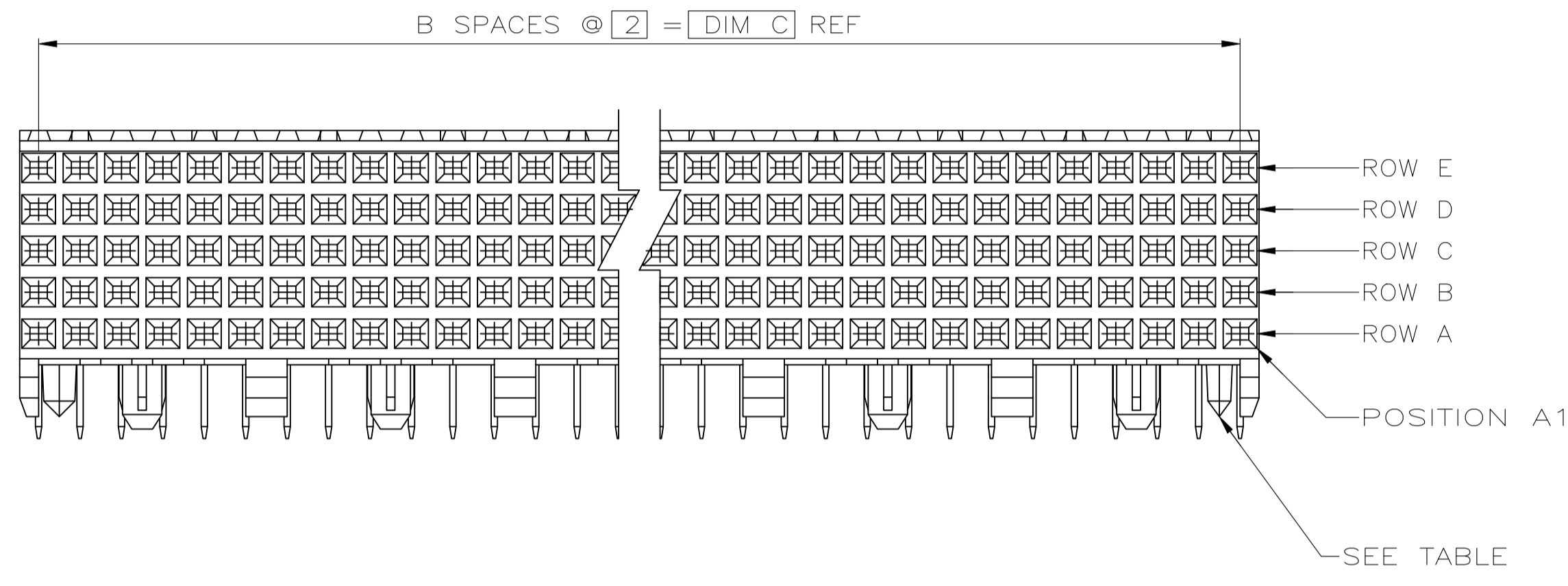
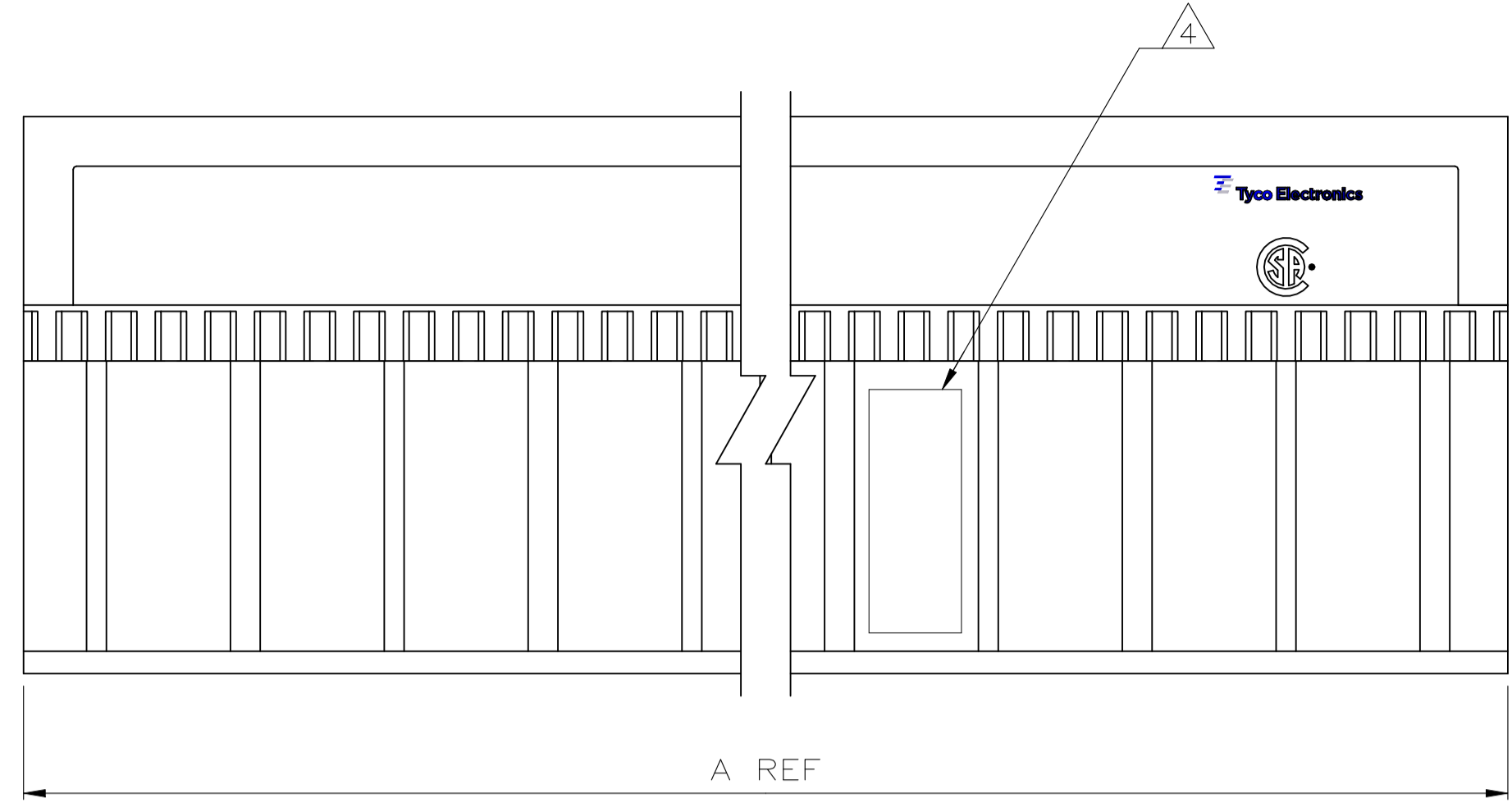
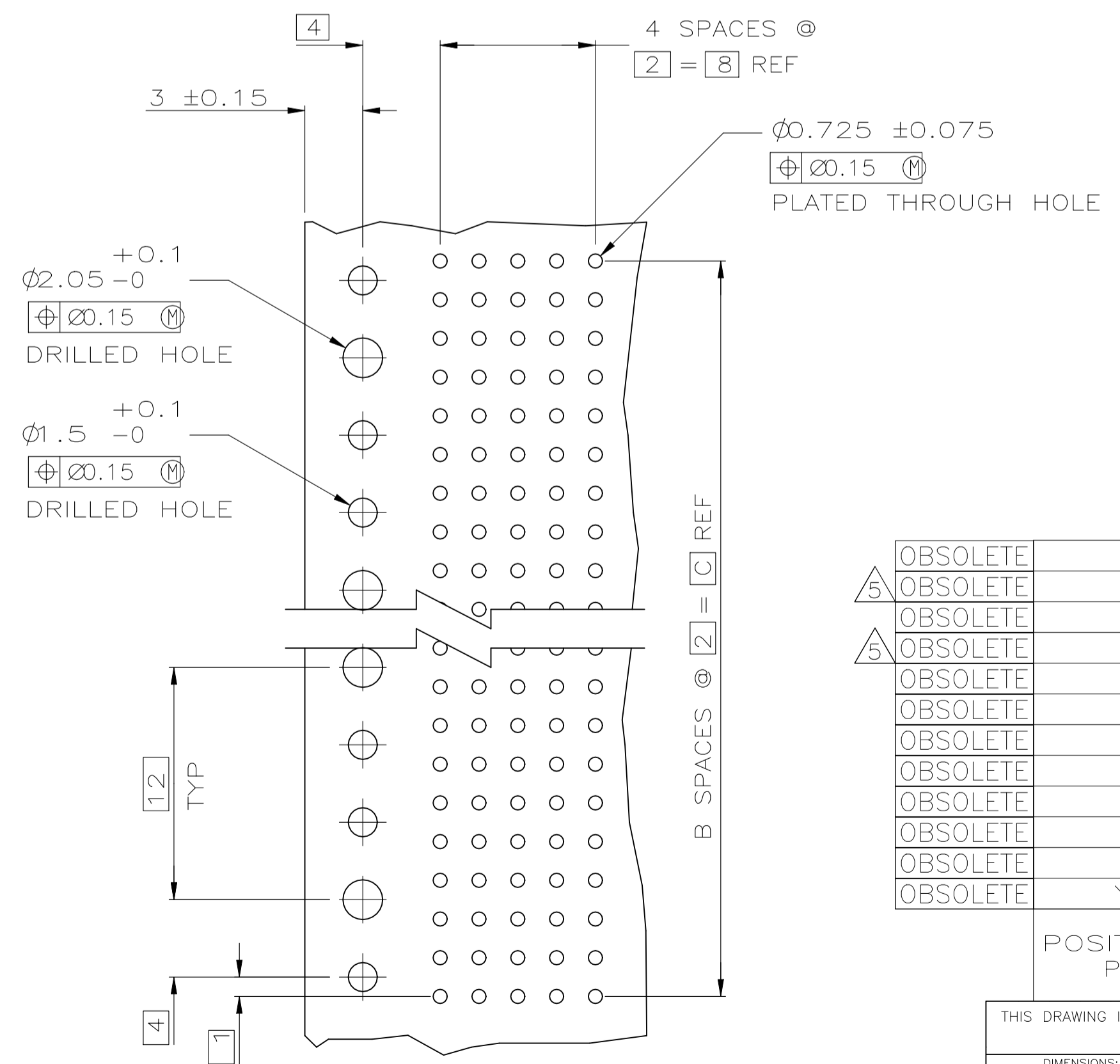
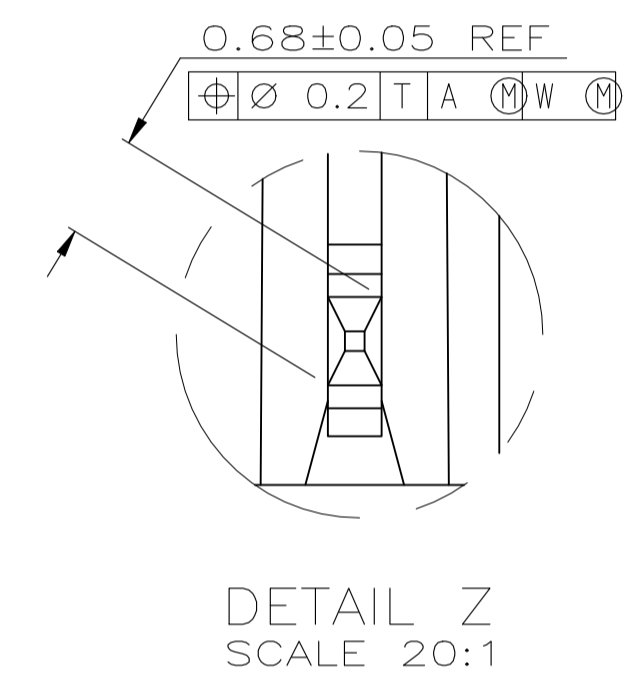
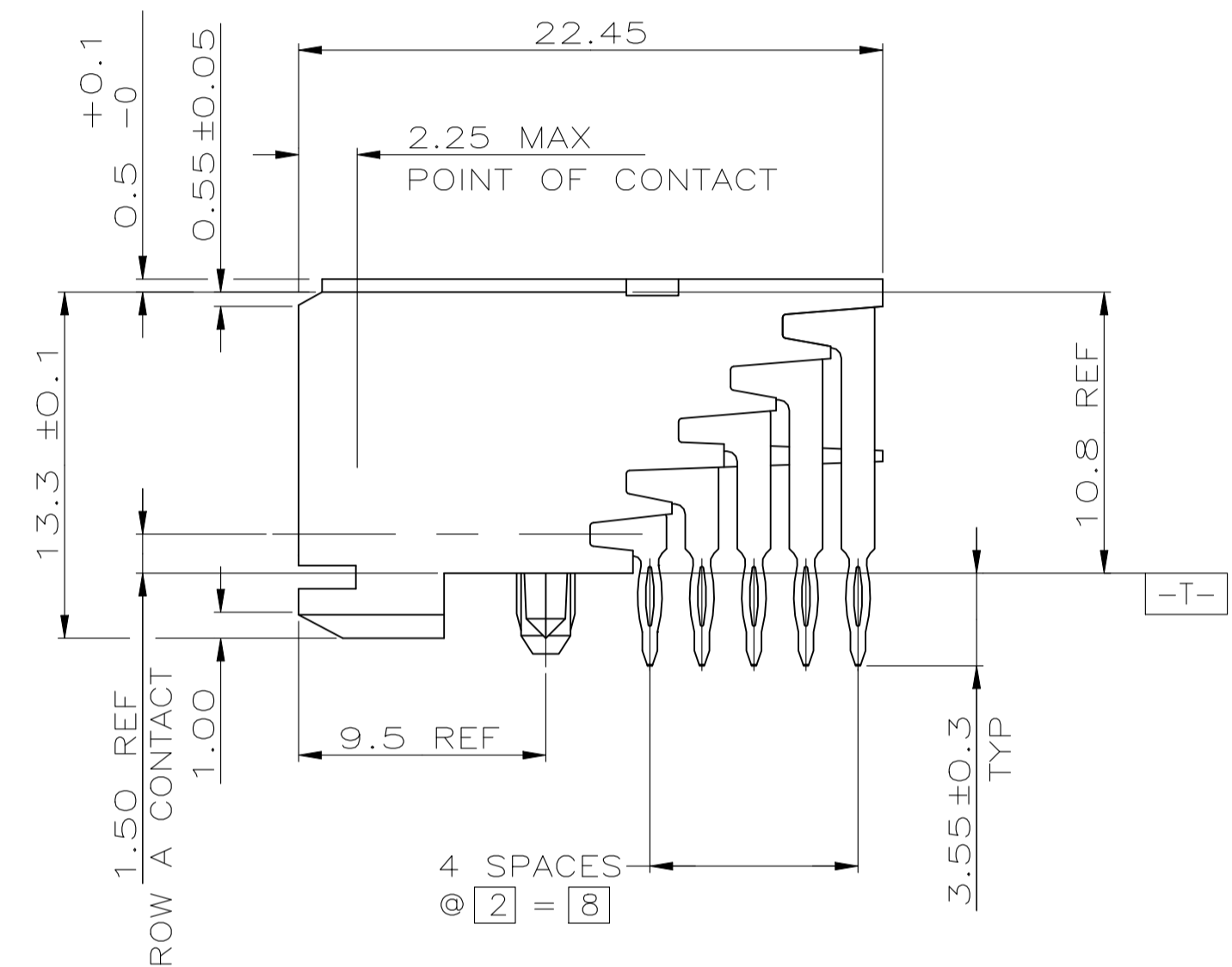


| REVISIONS | | | | | |
|-----------|-----|---------------------------|-----------|-----|------|
| P | LTR | DESCRIPTION | DATE | DRN | APPO |
| R1 | | REVISED PER ECN-22-165681 | 21JUL2022 | NV | HL |



- ① HOUSING MATERIAL: LIQUID CRYSTAL POLYMER
COLOR: NATURAL.
- ② CONTACT MATERIAL: PHOSPHOR-BRONZE.
- ③ CONTACT FINISH:
UNDERPLATE (ENTIRE CONTACT):
0.00127 MIN NICKEL.
ON MATING SURFACES:
CONFORMS TO ALL TESTING SPECIFIED FOR TELCORDIA
UNCONTROLLED ENVIRONMENT.
ON LEADS
0.0006 MIN TIN-LEAD OVER UNDERPLATE.
LUBRICATION (ENTIRE CONTACT):
SURFACE CONDITIONER PER AMP SPEC 112-1002 AFTER PLATING.
- ④ PART MARKING LOCATED APPROXIMATELY AS SHOWN.
- ⑤ OBSOLETE PARTS: OBSOLETE CIS STREAMLINING PER D.RENAUD/D.SINISI



| | | | | | | | |
|------------|-----|-----|-----|--------|---|-----|-----------------------|
| OBSOLETE | NO | 214 | 107 | 215.88 | ③ | 540 | 1-223008-2 |
| ⑤ OBSOLETE | NO | 130 | 65 | 131.88 | ③ | 330 | 1-223008-4 |
| OBSOLETE | NO | 118 | 59 | 119.88 | ③ | 300 | 1-223008-0 |
| ⑤ OBSOLETE | NO | 106 | 53 | 107.88 | ③ | 270 | 223008-9 |
| OBSOLETE | NO | 94 | 47 | 95.88 | ③ | 240 | 223008-8 |
| OBSOLETE | NO | 82 | 41 | 83.88 | ③ | 210 | 223008-7 |
| OBSOLETE | NO | 70 | 35 | 71.88 | ③ | 180 | 223008-6 |
| OBSOLETE | NO | 58 | 29 | 59.88 | ③ | 150 | 223008-5 |
| OBSOLETE | NO | 46 | 23 | 47.88 | ③ | 120 | 223008-4 |
| OBSOLETE | NO | 34 | 17 | 35.88 | ③ | 90 | 223008-3 |
| OBSOLETE | NO | 22 | 11 | 23.88 | ③ | 60 | 223008-2 |
| OBSOLETE | YES | 10 | 5 | 11.88 | ③ | 30 | 223008-1 |

| POSITIONING PEGS | C | B | A | FINISH | NO OF SIGNAL POSN | PART NUMBER |
|--|---|--|---|---|-------------------|---------------------|
| THIS DRAWING IS A CONTROLLED DOCUMENT. | | | | | | |
| DIMENSIONS: mm | | TOLERANCES UNLESS OTHERWISE SPECIFIED: | | APPROVED: D. SINISI 08/FEB/96 | | |
| 0. PLC ± - | | 1. PLC ± - | | NAME: ASSEMBLY, RECEPTACLE, SIGNAL, RIGHT ANGLE, Z-PACK 2mm FB, 5 ROW, PRESS FIT LEAD | | |
| 2. PLC ± 0.13 | | 3. PLC ± - | | APPLICATION SPEC: - | | |
| 4. PLC ± - | | ANGLES ± - | | SIZE: A1 00779 C=223008 | | |
| MATERIAL: ① ② | | FINISH: ③ | | WEIGHT: 0.000000 | | RESTRICTED TO: - |
| CUSTOMER DRAWING | | | | SCALE: 4:1 | | SHEET 1 of 1 REV R1 |

RECOMMENDED CIRCUIT PATTERN
PER IPC-D300 TYPE II, CLASS C
(COMPONENT SIDE)