

REV.	SPECIFICATION	ECN NO.	APPD.
R2		ECN191210	

Material and Plating:

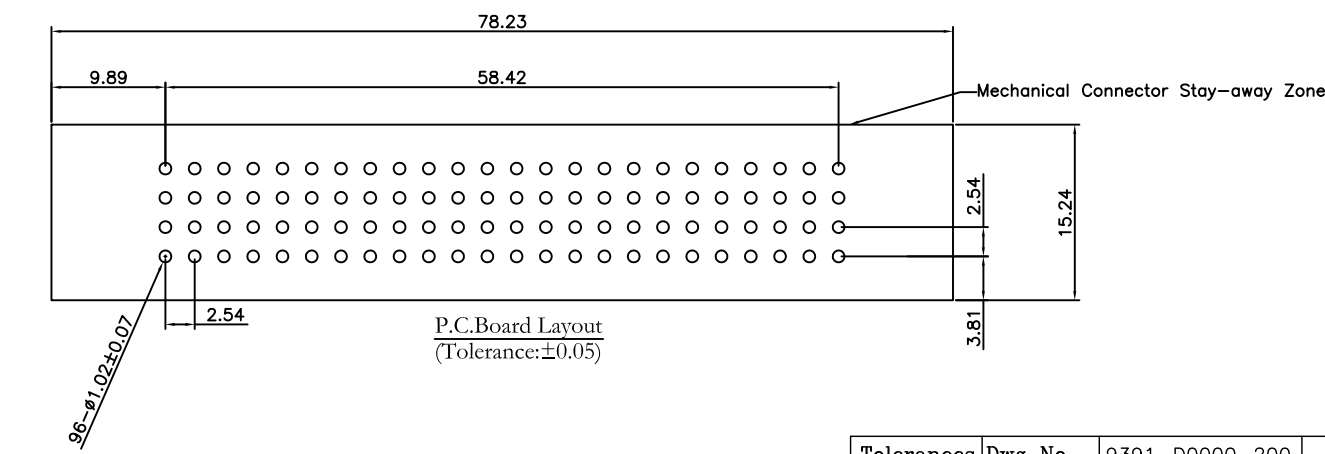
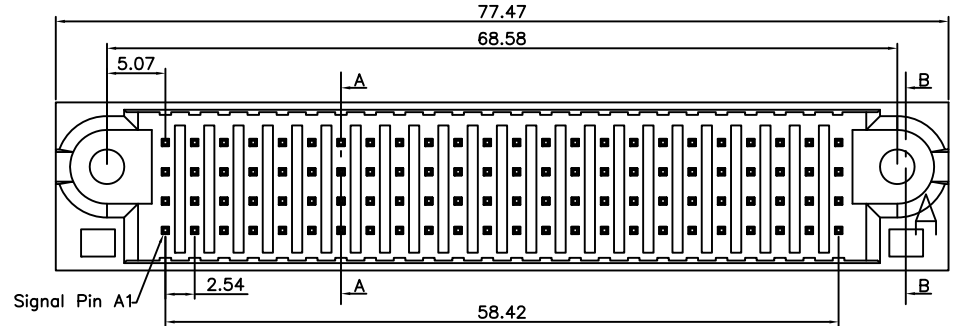
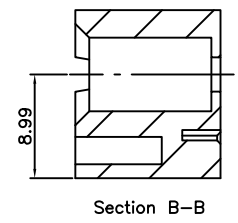
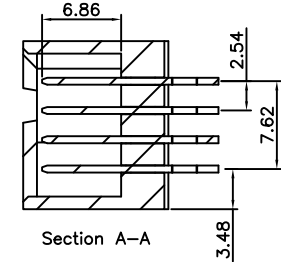
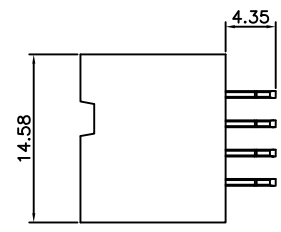
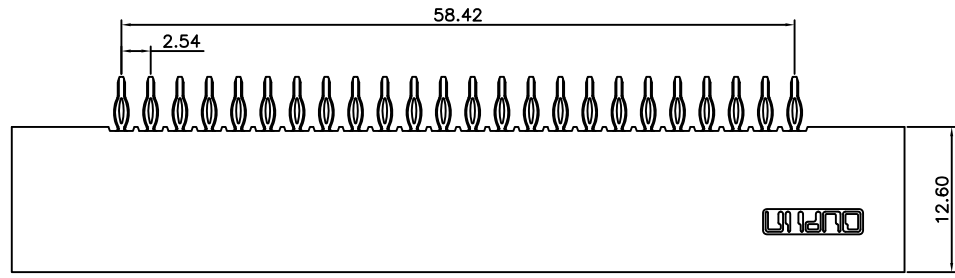
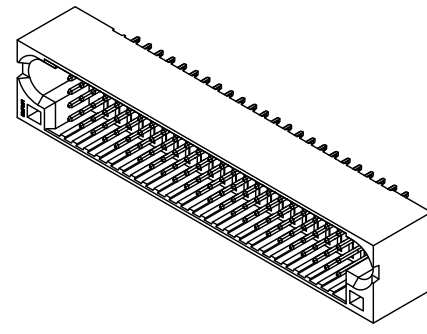
Housing: LCP, UL94V-0, Black.
 Signal Contacts : Brass.
 30u" Au+Pd/Ni on Contact Area and 80u" Min Tin Plated on Press Fit over Nickel 50u" Min.

Electrical Characteristics:

Current Rating: 2.5 AMP.
 Dielectric Withstanding Voltage: DC 1000V For 1 minute.
 Insulator Resistance: 5000MΩ min. at DC 500V.
 Contact Resistance: 15mΩ max. at DC 20mA.
 Operating Temperature: -40°C ~+105°C.

***RoHS Compliant**

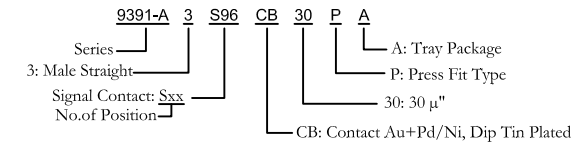
Note:
 S: Signal---PCB Mount 2.54mm Pitch.



P.C.Board Layout
 (Tolerance: ±0.05)

ROWS	SIGNAL																							
	1	2	3	4	5	6	7	8	9	10	11	12	13	14	15	16	17	18	19	20	21	22	23	24
D	G	G	G	G	G	G	G	G	G	G	G	G	G	G	G	G	G	G	G	G	G	G	G	G
C	G	G	G	G	G	G	G	G	G	G	G	G	G	G	G	G	G	G	G	G	G	G	G	G
B	G	G	G	G	G	G	G	G	G	G	G	G	G	G	G	G	G	G	G	G	G	G	G	G
A	G	G	G	G	G	G	G	G	G	G	G	G	G	G	G	G	G	G	G	G	G	G	G	G

SIGNAL PIN CONTACT LENGTH 4.32mm	H
SIGNAL PIN CONTACT LENGTH 5.59mm	E
SIGNAL PIN CONTACT LENGTH 7.05mm	F
SIGNAL PIN CONTACT LENGTH 6.86mm	G
HOT PLUG POWER CONTACT.STD	MS



Tolerances	Dwg No.	9391-D0000-200	Title:	
.x = ±0.50	Projection		9391 Series High Power	
.xx = ±0.25	Unit	mm	Scale	1:1
.xxx = ±0.15	Drawn By	zcc 10/22'20	Plug Straight Press Fit Type	

©(T)

OUPIN
 OUPIN ELECTRONIC(KUNSHAN) CO., LTD.
 P/N: 9391-A3S96CB30PA
 SHEET 1/1 Ver.No. R2