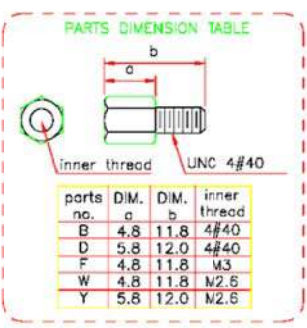
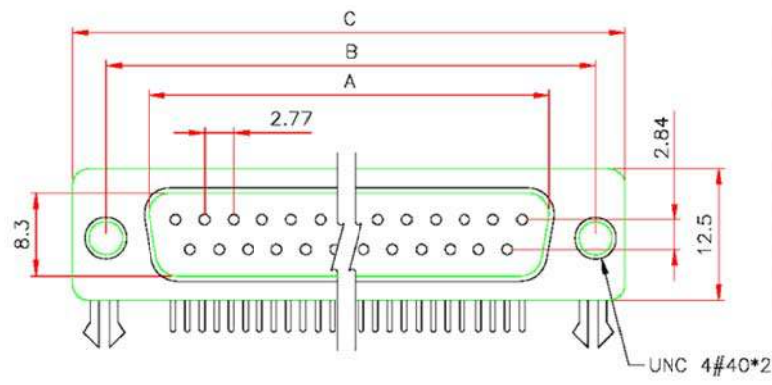


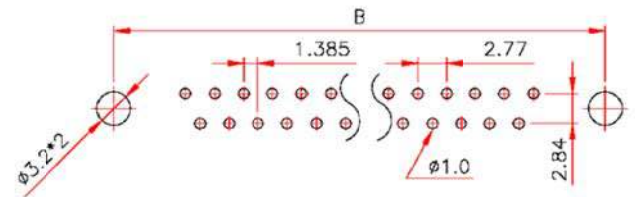
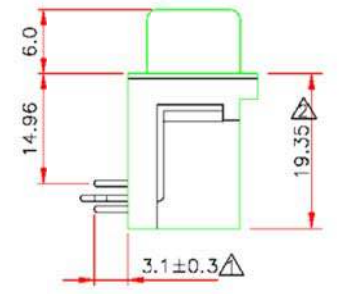
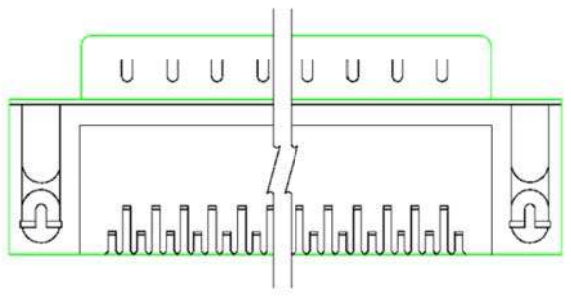
used for:



parts no.	DIM. a	DIM. b	inner thread
B	4.8	11.8	4#40
D	5.8	12.0	4#40
F	4.8	11.8	M3
W	4.8	11.8	N2.6
Y	5.8	12.0	N2.6

**SPECIFICATION MATERIAL**

- Insulator: PBT, rated UL94V-0 (standard)
- Contacts: Brass (standard)
- Shell: Steel
- Rivet, Boardlock: Copper alloy
- CONTACT PLATING**
- Underplate: 50u" Nickel
- Contact area: 1u"~30u" Selective Gold
- Solder tails area: 100u" Tin/Lead
- ELECTRICAL**
- Operation voltage: 250 VAC max.
- Current rating: 3 Amps max.
- Contact resistance: 15 mohms max.
- Insulation resistance: 3000 Mohms min @ 500 VDC
- Dielectric withstanding voltage: 1000 VAC / minute
- Operating temperature: -55°C TO +105°C



RECOMMENDED P.C.B LAYOUT(TOP VIEW)  
TOLERANCES: ±0.10mm

POSITION	A	B	C
9M	16.92	25.00	30.8
15M	25.25	33.30	39.2
23M	35.90	44.30	50.3
25M	38.96	47.10	53.1
37M	55.42	63.50	69.4

THIS DRAWING MAY NOT BE COPIED OR REPRODUCED IN ANY WAY, AND MAY NOT BE PASSED ON TO A THIRD PARTY WITHOUT WRITTEN PERMISSION. OWNERSHIP AND COPYRIGHT OF CONEC CORPORATION. DO NOT ALTER CAD DRAWING BY HAND

tolerance unless otherwise specified tolerance shall be as follow Decimtal: .x .xx Angles:			finish 2005 date draw. June. 13 Vincent Ke appd. norm d-old	 Dim. in mm	scale: material: SEE SPECIFICATION
rev. description date name					title: 15 pos Male "D" R/A D-Sub 13.84mm snap-in R rivet UN 4/40 nut drawing no.: AutoCAD 2005 C0506K21A part no.: 301A515505XU
					DIN A3 sheet 1/1