



Copyright FCI



FCIconnect.com



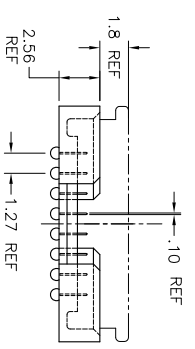
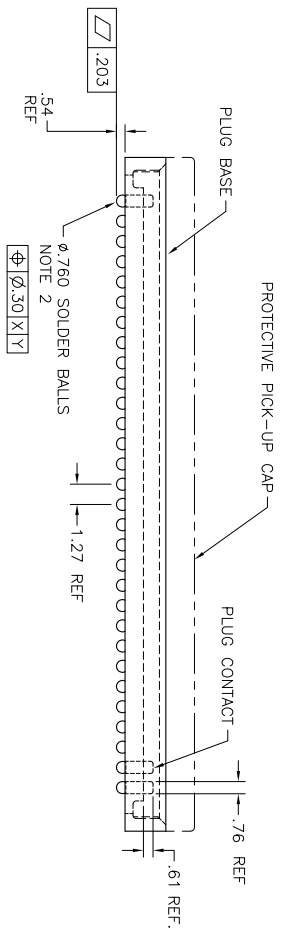
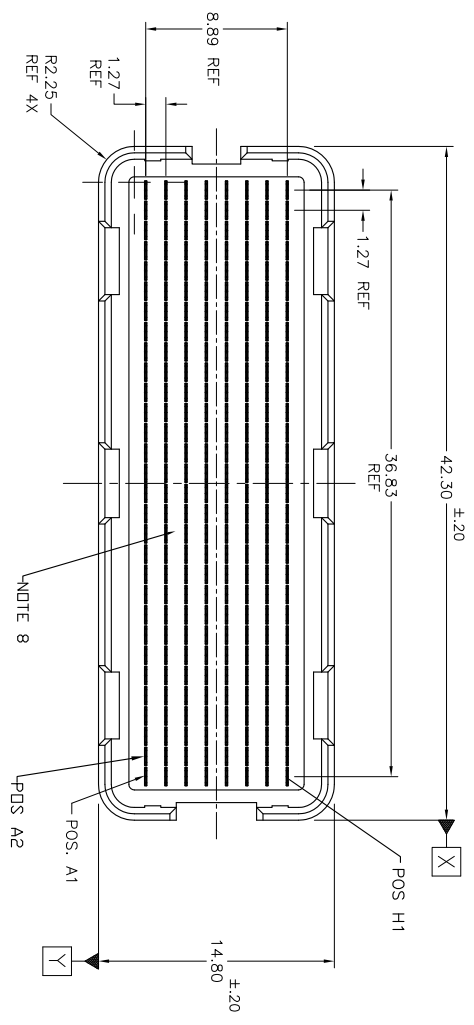
PRODUCT NUMBER

SEE TABLE-SHEET 3

1 | 2

3 |

4



mat'l code	SEE NOTE 1	surface	tolerance	projection	product family
lfr	ecn no.	date	ASME Y14.5	ASME Y14.5	MEG-Array
N	V06-0560	LP 2006-07-14	tolerances unless otherwise specified		
P	V-012333	SJ 2012-08-07	angles	X +3	OMM PLUG ASSY,
R	V12-0038	DG 2012-11-14	±.2	XXX +.00	8 X 30 = 240 POS.
S	V-13710	DGH 2012-12-18		Scale 1:1	sheet 1 of 3
T	V-13387	DGH 2013-9-19			size
U	V-16676	DGH 2014-1-7			A4
V	V-17557	DGH 2014-4-3			
Sheet	revision	V	V	V	CUSTOMER Drawing
index	Sheet	1	2	3	



Copyright FCI



FCIconnect.com

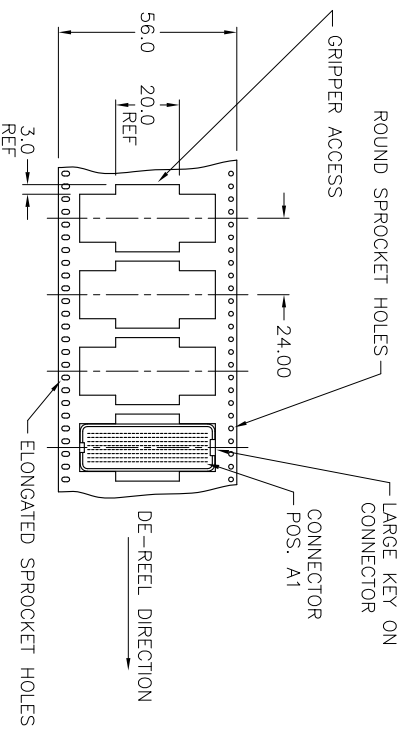
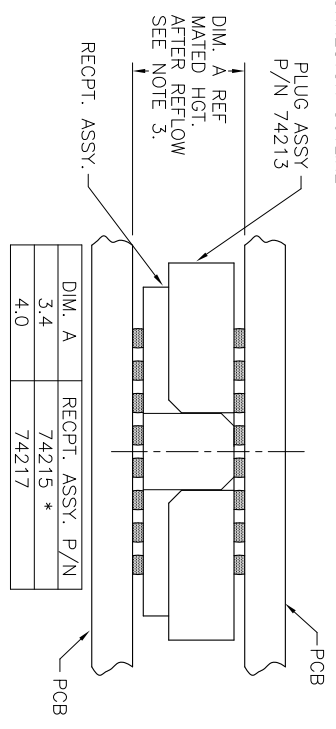


3 |

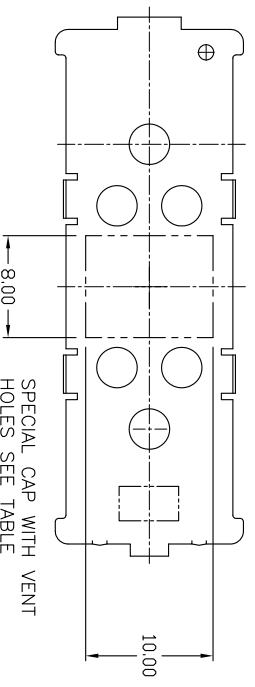


4

STENCIL MATED CONNECTOR OUTLINE



TAPE & REEL PACKAGING SCALE NONE
PER EIA 481-3



mat'l. code	SEE NOTE 1	surface	tolerance	projection	product family
lbr	ecn no	dr	date	ASPC Y14.5 V ASPC Y14.5	MEG-ARRAY
V		angles	XXX-A3	MM	0mm PLUG ASSY.
		dr	XXX-A3	Scale 2:1	8 X 30 = 240 POS.
		dr	D WAUGHEN 1997-11-14		sheet 2 of 3 size
		engr	T LEMKE 1997-11-14		A4
		chr	T LEMKE 1997-11-14		CUSTOMER Drawing
		apdd	T LEMKE 1997-11-14		
sheet	revision				
index	sheet				

NOTES:

1. MAT'L:

HOUSING: LCP, FLAME RETARDANT PER UL 94V-0.

CONTACT: COPPER ALLOY

PLATING

CONTACT: (SEE TABLE ON THIS SHEET)

SOLDER BALL: (SEE TABLE ON THIS SHEET)

EUTECTIC SnPb OR LEAD FREE

95.5Sn/4Ag/0.5Cu

2. SOLDER BALLS WILL NOT BE PERFECT SPHERICAL SHAPE DUE TO REFLOW ATTACHMENT.

3. MATED HEIGHT EFFECTED BY CUSTOMER'S PCB PAD SIZE, PLATING, SOLDER REFLOW PROFILE, & SOLDER PASTE.

4. PLATING FOR INDICATED -2XX SERIES PRODUCT NUMBERS MEET THE REQUIREMENTS OF GR-1217-CORE, CENTRAL OFFICE ENVIRONMENT, (25 YEAR LIFE EXPECTANCY). THE CONTACT GEOMETRY IN THESE PRODUCT NUMBERS IS SPECIAL, ALSO.

5. FOR PROPER APPLICATION FOLLOW FCI APPLICATION SPECIFICATION GS-20-033 LEAD FREE SOLDER BALLS WILL NOT SOLDER PROPERLY IN A LEADED SOLDER PROCESS DUE TO A HIGHER REFLOW TEMPERATURE. LEAD FREE PRODUCT IS THEREFORE NOT BACKWARDS COMPATIBLE WITH LEADED OR SOME SOLDERING APPLICATIONS. REFERENCE FCI APPLICATION SPECIFICATION

6. THIS PRODUCT MEETS EUROPEAN UNION DIRECTIVES AND OTHER COUNTRY REGULATIONS AS DESCRIBED IN GS-47-0004 PRODUCT MEETING THIS DIRECTIVE IS IDENTIFIED IN THE LOT CODE NUMBER MARKED ON EACH PART BY HAVING AN "X" IN THE SEVENTH CHARACTER POSITION

7. 74213-302, -302LF, -402, -402LF, -502 AND -502LF ARE OBSOLETE PRODUCT NUMBERS.

8. VISABLE KNOT LINES ANYWHERE ON FLOOR OF HOUSING ARE PERMITTED. OPEN KNOT LINES ANYWHERE ARE NOT PERMITTED.

PRODUCT NUMBER	PICK-UP GAP NATURAL OR BLACK COLOR	CONTACT PLATING AND THICKNESS	SOLDER BALL	NOTES
74213-002	STANDARD	15u" (.38um) Au	SnPb	
74213-002LF	STANDARD	15u" (.38um) Au	LEAD FREE	6
74213-092	STANDARD	15u" (.38um) GXT	SnPb	
74213-092LF	STANDARD	15u" (.38um) GXT	LEAD FREE	6
74213-093	SPECIAL WITH VENT HOLES	15u" (.38um) GXT	SnPb	
74213-093LF	SPECIAL WITH VENT HOLES	15u" (.38um) GXT	LEAD FREE	6
74213-102	STANDARD	30u" (.76um) Au	SnPb	
74213-102LF	STANDARD	30u" (.76um) Au	LEAD FREE	6
74213-192	STANDARD	30u" (.76um) GXT	SnPb	
74213-192LF	STANDARD	30u" (.76um) GXT	LEAD FREE	6
74213-202	STANDARD	50u" (1.27um) Au SPECIAL	SnPb	4
74213-202LF	STANDARD	50u" (1.27um) Au SPECIAL	LEAD FREE	4 AND 6
74213-292	STANDARD	50u" (1.27um) GXT SPECIAL	SnPb	4
74213-292LF	STANDARD	50u" (1.27um) GXT SPECIAL	LEAD FREE	4 AND 6
74213-302	YES	15u" (.38um) Au SPECIAL	SnPb	7
74213-302LF	YES	15u" (.38um) Au SPECIAL	LEAD FREE	6 AND 7
74213-402	YES	30u" (.76um) Au SPECIAL	SnPb	7
74213-402LF	YES	30u" (.76um) Au SPECIAL	LEAD FREE	6 AND 7
74213-502	YES	Au SPECIAL	SnPb	4 AND 7
74213-502LF	YES	Au SPECIAL	LEAD FREE	4, 6 AND 7

9. A  SYMBOL WILL BE NEXT TO ANY DIMENSION, NEW VIEW OR NOTE WHICH HAS BEEN MODIFIED WITH THE CURRENT DRAWING REVISION.

mat'l code	SEE NOTE 1	surface	tolerance	projection	product family
lfr	ecn no	dr	date	ASME Y14.5	ASME Y14.5
V		angles	X+.3	MM	MEG-ARRAY
		dr	XXX.X3	Scale 2:1	0mm PLUG ASSY.
		dr	XXX.X51		8 X 30= 240 POS.
		dr	D WAUGHEN 1997-11-14		sheet 3 of 3 size
		dr	T LEMKE 1997-11-14		74213
		chr	T LEMKE 1997-11-14		A4
		qdd	T LEMKE 1997-11-14		CUSTOMER Drawing
sheet	revision				
index	sheet				