

Customer Information Sheet

DRAWING No.: M80-711XXXX

SHEET 2 OF 2

IF IN DOUBT - ASK

©

NOT TO SCALE

THIRD ANGLE PROJECTION

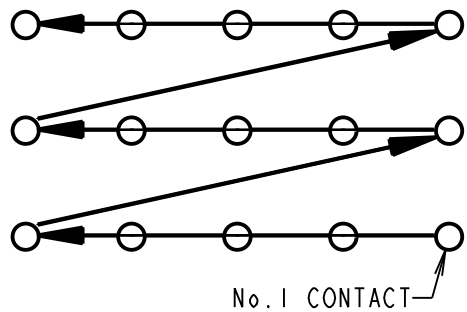
ALL DIMENSIONS IN mm

ORDER CODE:
M80-711XXXX

TOTAL No OF CONTACTS:
(EXCLUDING POWER CONTACTS)
06, 15, 24, 30, 42

FINISH:
05 - GOLD
22 - SELECTIVE GOLD, TIN/LEAD
42 - SELECTIVE GOLD, 100% TIN

NOTES:
1. FROM No. 1 POSITION,
CONTACTS NUMBERED IN
SEQUENCE FROM RIGHT TO LEFT,
BOTTOM ROW TO TOP ROW
(LOOKING ON MATING FACE)



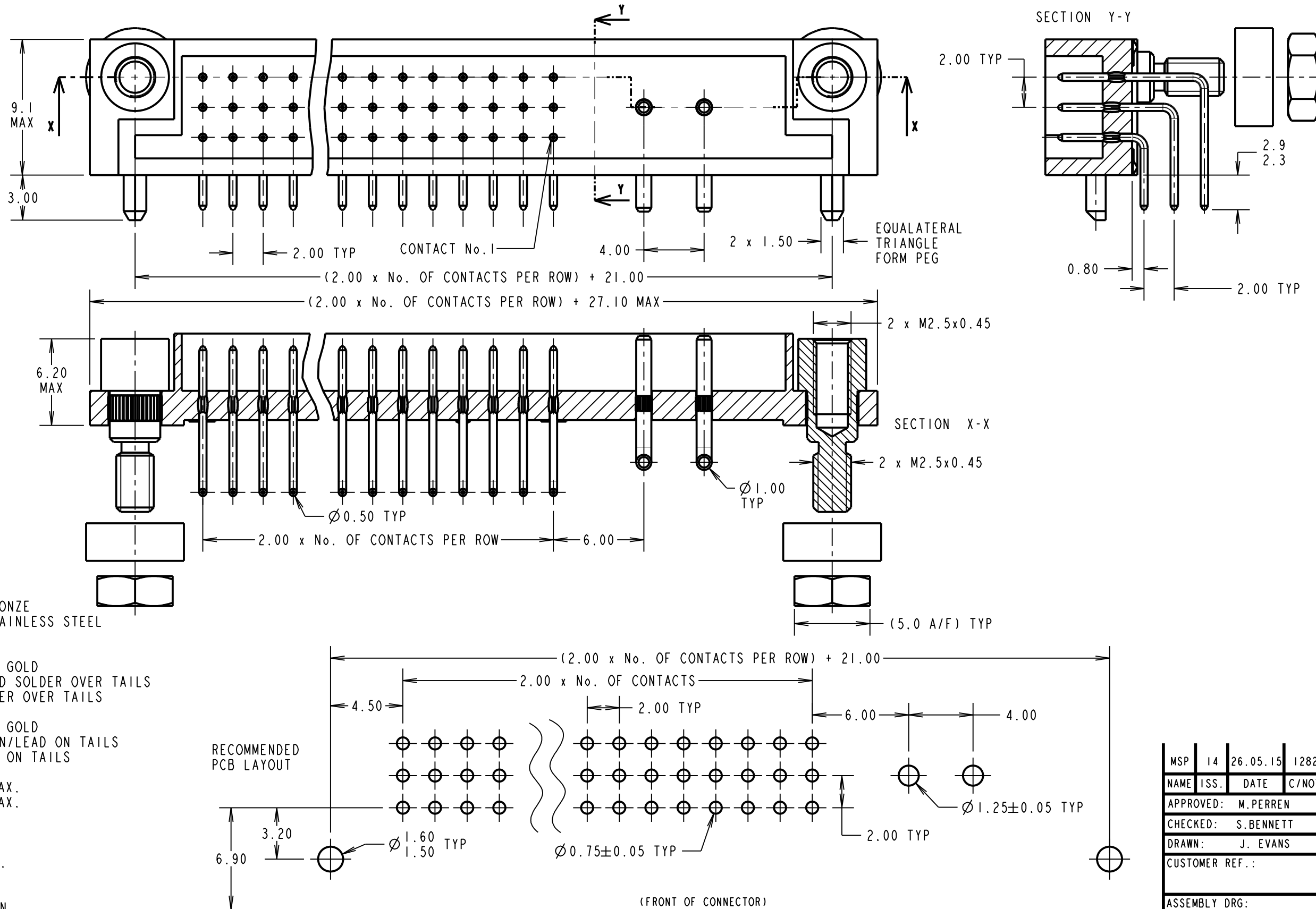
SPECIFICATION

MATERIALS:
MOULDING = POLYIMIDE 46 UL94V-0
CONTACTS (POWER) = BRASS
CONTACTS (SIGNAL) = PHOSPHOR BRONZE
JACKSCREWS, WASHERS & NUTS = STAINLESS STEEL

FINISH:
POWER CONTACTS:
05 = 0.25 - 0.3µ ALL OVER 100% GOLD
22 = 0.75µ GOLD, 60/40 TIN/LEAD SOLDER OVER TAILS
42 = 0.75µ GOLD, 100% TIN SOLDER OVER TAILS
SIGNAL CONTACTS:
05 = 0.25 - 0.3µ ALL OVER 100% GOLD
22 = 0.75µ GOLD, 3.0µ 60/40 TIN/LEAD ON TAILS
42 = 0.75µ GOLD, 3.0µ 100% TIN ON TAILS

ELECTRICAL:
CURRENT RATING AT 25°C = 3.0A MAX.
CURRENT RATING AT 85°C = 2.2A MAX.
VOLTAGE PROOF = 360V AC/DC
CONTACT RESISTANCE:
INITIAL = 20mΩ MAX.
AFTER CONDITIONING = 25mΩ MAX.
INSULATION RESISTANCE:
INITIAL = 1000MΩ MIN.
AFTER CONDITIONING = 100MΩ MIN.

MECHANICAL:
DURABILITY = 500 OPERATIONS
ENVIRONMENTAL:
TEMPERATURE RANGE = -55°C TO +125°C
PACKING: TRAY
FOR COMPLETE SPECIFICATION SEE COMPONENT
SPECIFICATION CO17XX (LATEST ISSUE)



MSP	14	26.05.15	12829
NAME	ISS.	DATE	C/NOTE
APPROVED: M. PERREN			
CHECKED: S. BENNETT			
DRAWN: J. EVANS			
CUSTOMER REF.:			
ASSEMBLY DRG:			

HARWIN

www.harwin.com
technical@harwin.com

THIS DRAWING AND ANY
INFORMATION OR DESCRIPTIVE
MATTER SET OUT HEREON ARE
CONFIDENTIAL AND COPYRIGHT
PROPERTY OF THE HARWIN
GROUP AND MUST NOT BE
DISCLOSED, LOANED, COPIED
OR USED FOR MANUFACTURING,
TENDERING OR FOR ANY
OTHER PURPOSE WITHOUT
THEIR WRITTEN PERMISSION.

TOLERANCES
X. = ±1mm
X.X = ±0.50mm
X.XX = ±0.10mm
X.XXX = ±0.01mm
ANGLES = ±5°
UNLESS STATED

MATERIAL:
SEE ABOVE
FINISH: SEE ABOVE
S/AREA: mm²

TITLE: DATAMATE MIX-TEK 3-ROW
MALE HORIZONTAL PC TAIL
ASSY (WITH POWER CONTACTS)

DRAWING NUMBER:
M80-711XXXX
SHT
2 OF 2