

MKS-L DIES CONSTRUCTION SHEET

JST

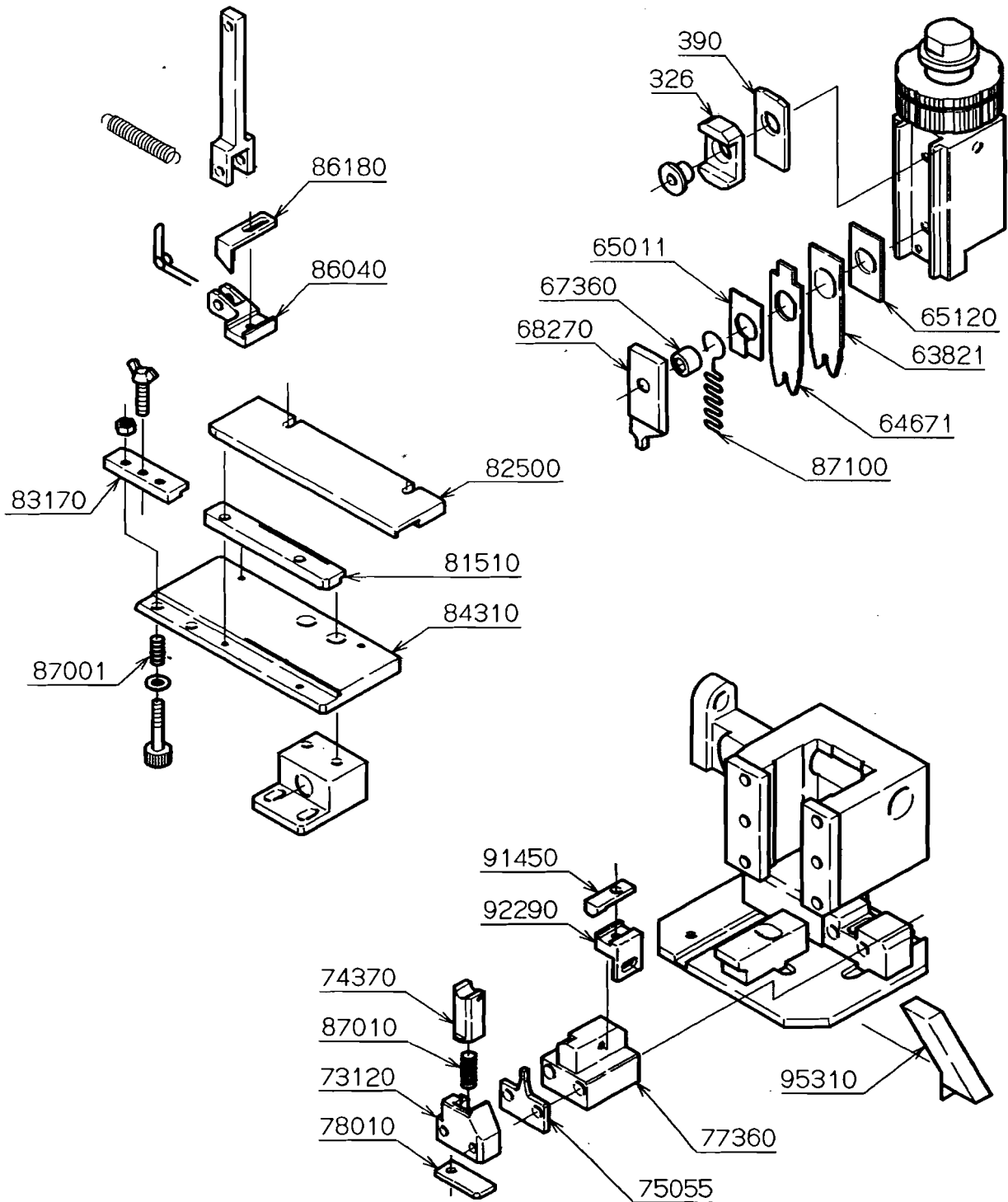
Terminal/Contact Model No.	SPH-002T-P0.5S	Die set Model No.	SPH-002-05S		
		Applicator Model No.	MKS-L, MKS-LS		
		Crimp shape (wire)	N-1.4		
		Crimp shape (ins)	N-1.4		
Clearance between Crimper (B) and Shear blade			0.1		
Description		No.	Description	No.	
Crimper (A)		63821	Crimper anvil (A)	75055	
Crimper (B)		64671	Crimper anvil (B)		
Spacer (A)		65120			
Spacer (B)					
Spacer (C)		65011			
Punch		68270	Spacer	77360	
Die holder		67360	Shear blade	74370	
Spring		87100	Shear blade supporter	73120	
Wire block		390	Shear blade base	78010	
Insulation block		326	Shear blade spring	87010	
			Feed finger	86180	
			Feed finger holder	86040	
Guide plate (L)		81510	Stripper	91450	
Guide plate (R)		82500	Stripper bracket	92290	
Feed plate		84310	Stripper pin		
Pressure plate		83170			
Pressure spring(2pcs)		87001	Scrap cover	95310	
Wire and Crimp height				Remarks Dies construction is the same as that for SPH-002-05L, though crimp heights are different.	
Wire		Crimp height (mm)			
Type	Size	Wire	Ins		
UL1007	#30	0.52~0.57	1.5		
UL1007	#28	0.55~0.60	1.5		
UL1007	#26	0.57~0.62	1.6		
UL1007	#24	0.62~0.67	1.7		
Prepared by		K. Fujii		Issue date	Apr 16, 1996
Checked by				No.	CP-MS133



Side-Feeding Applicator
MKS-L
Die Set Assembly

Applicable
terminal/
contact

SPH-002-05S
-05L
-001-05S



Date	Drawn by	(CP-MS133)
JUN 12. 98	Y. OKADA	(CP-MS132)