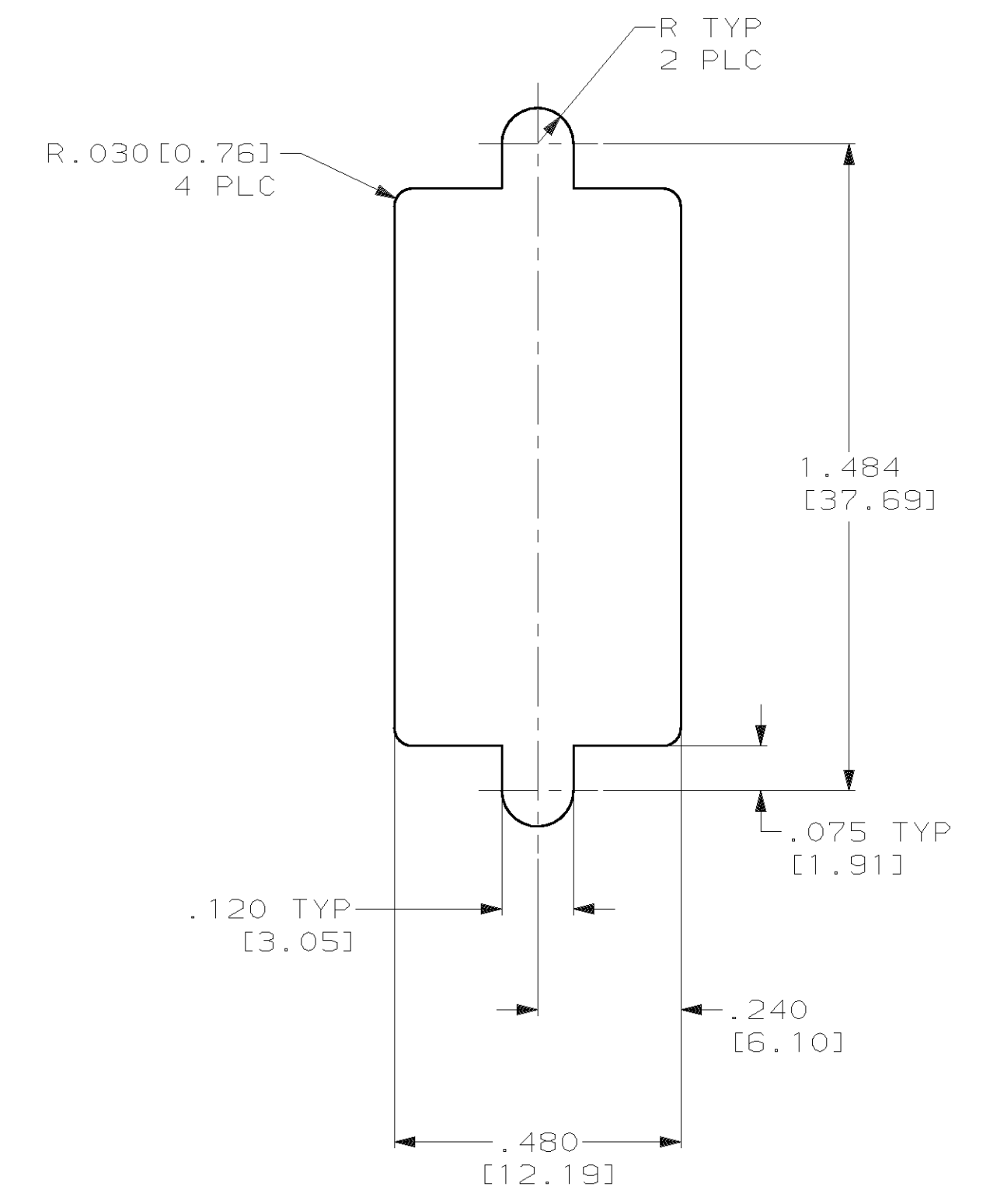
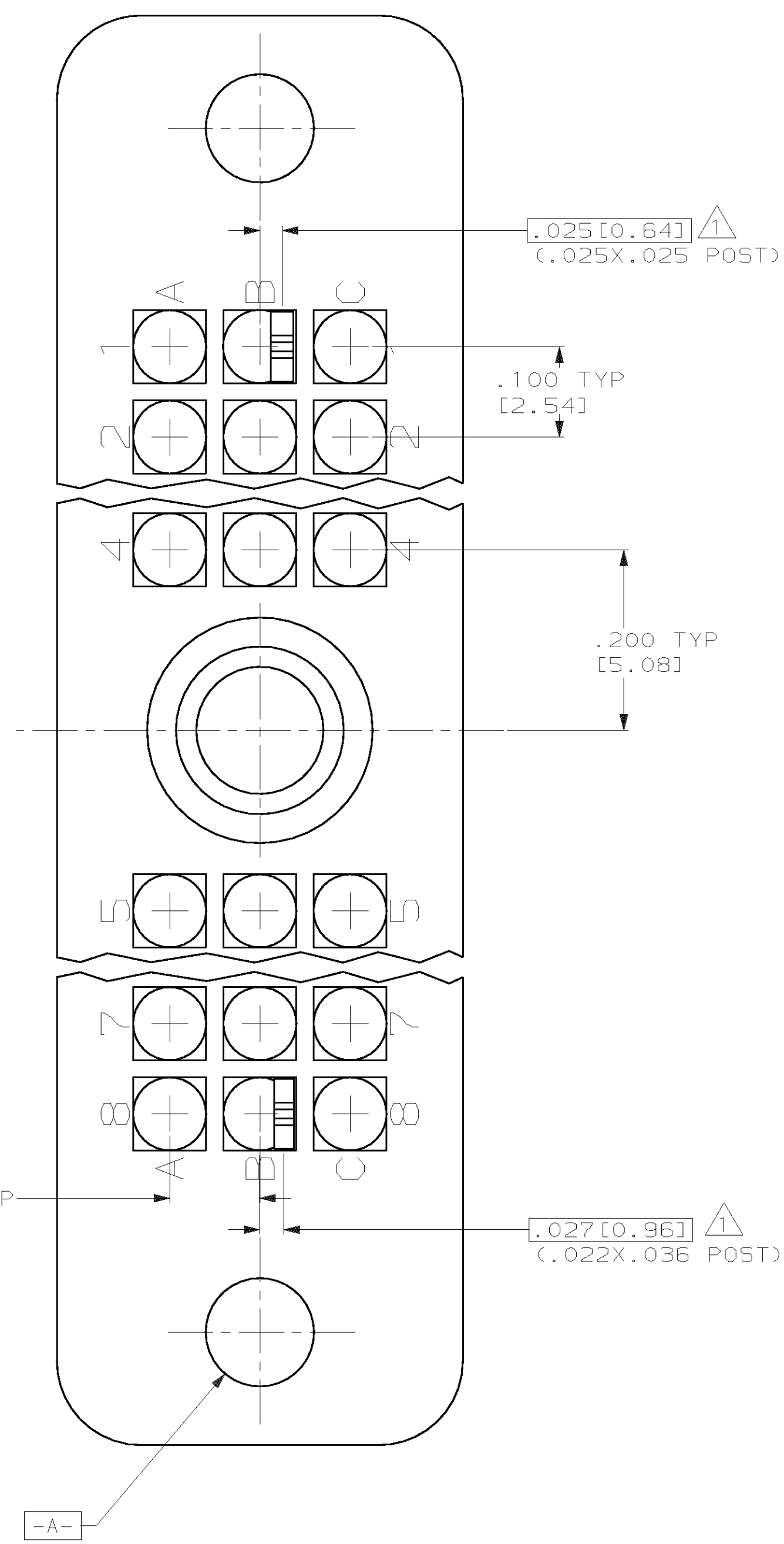
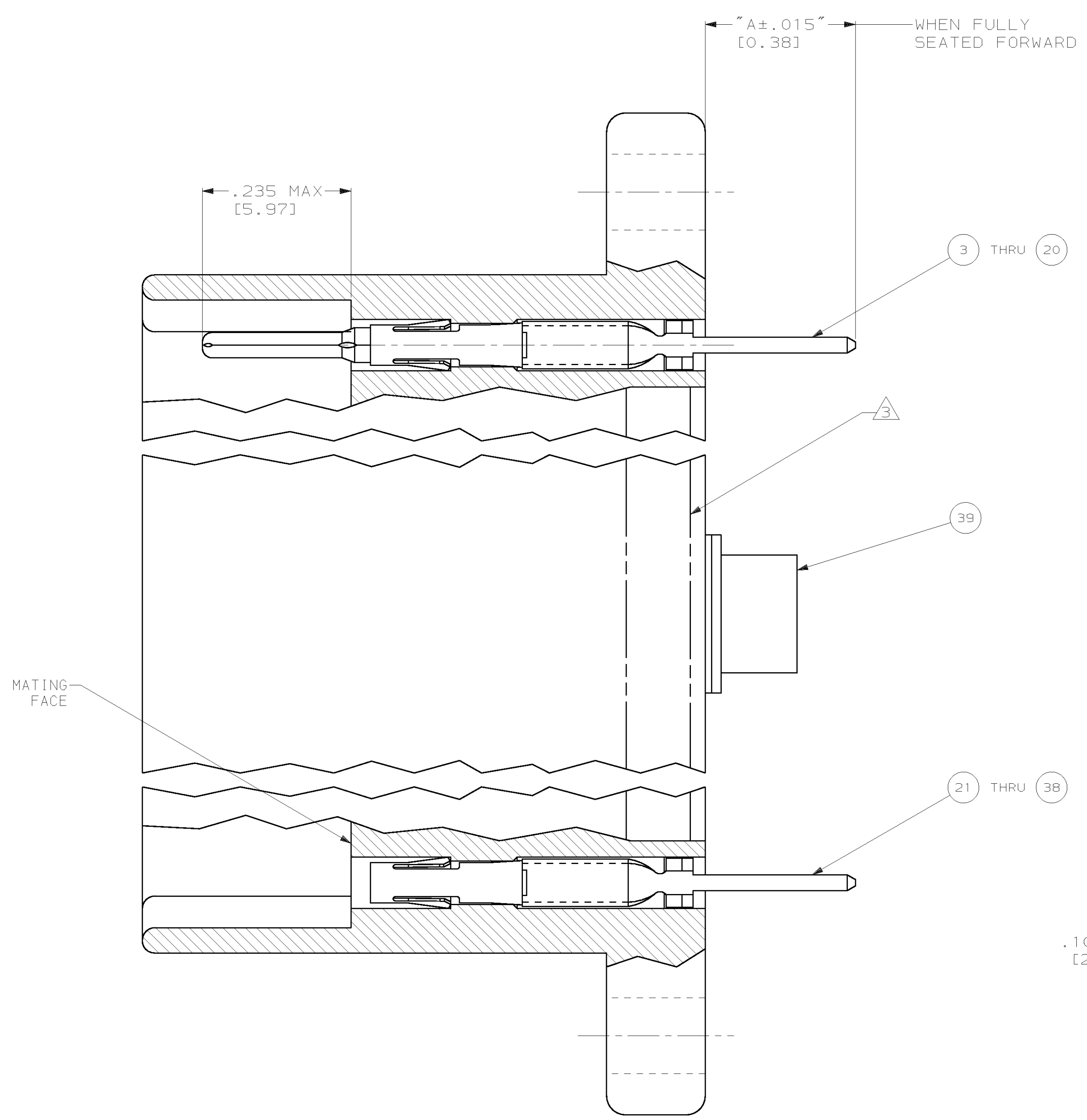


REVISONS		DATE	OWN	APPV
DF	CO			
K	REV PER	OG3D-0276-01	7-02	CT JM

- 1 THE TIP OF THE CONTACT POSTS WILL FALL WITHIN .025 DIAMETER TRUE POSITION OF EACH OTHER.
- 2 PARTS TO BE ASSEMBLED BY AMP INC.
- 3 AMP, PART NUMBER AND DATE CODE MARKED ON EITHER SIDE.



SUGGESTED PANEL CUTOUT
SCALE 4:1

"A"	NUMBER OF TERMINATIONS	TYPE OF POST
.520 [13.21]	3	.022X.036 POST
.370 [9.40]	2	
.220 [5.59]	1	.025X.025 POST
.670 [17.02]	3	
.456 [11.58]	2	
.242 [6.15]	1	

<small>THIS DRAWING IS A CONTROLLED DOCUMENT AND IS UNPUBLISHED. IT IS SUBJECT TO CHANGE AND THE CONTROLLING ENGINEERING DEPARTMENT SHALL BE CONTACTED FOR THE LATEST REVISION.</small>		DWN T. THOMPSON 09-08-95 CHK D. MUMMEY 09-08-95 D. MUMMEY 09-08-95 PRODUCT SPEC APPLICATION SPEC HEIGHT - CUSTOMER DRAWING	AMP AMP Incorporated Harrisburg, PA 17105-3608 24 POSITION, HDR, RECEPTACLE W/ JACKSCREW SIZE A1 CAGE CODE 00779 DRAWING NO. C=204684 SCALE 8:1 SHEET 13 OF 13 REV K
DIMENSIONS IN (mm) TOLERANCES UNLESS OTHERWISE SPECIFIED: 0 PLC ±.005 1 PLC ±.005 2 PLC ±.005 3 PLC ±.005(0.13) 4 PLC ±.005 ANGLES ±.005 FINISH SEE TABLE	DIMENSIONS IN (mm) TOLERANCES UNLESS OTHERWISE SPECIFIED: 0 PLC ±.005 1 PLC ±.005 2 PLC ±.005 3 PLC ±.005(0.13) 4 PLC ±.005 ANGLES ±.005 FINISH SEE TABLE		

