

**BEARING CASE MATERIAL**

Glass-fibre reinforced polyamide based (PA) technopolymer, black colour, matte finish.

**STANDARD EXECUTIONS**

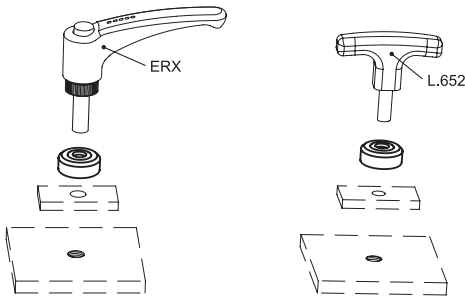
- **CMC**: AISI 52100 steel axial bearing, zinc-plated steel washers.
- **CMC-SST**: AISI 440 C stainless steel axial bearing, AISI 303 stainless steel washers.

**FEATURES AND APPLICATIONS**

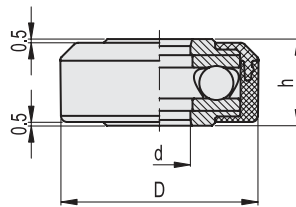
Used in combination with clamping levers ERX. (see page 324), ERW. (see page 384), MRX. (see page 338), ERF. (see page 401), clamping knobs type VCT.SOFT (see page 210) or handles type L.652 (see page 606), CMC torque amplifier collars double the clamping force applied at equal torque due to the presence of a bearing acting to reduce friction.



ELESA Original design



Conversion Table	
1 mm = 0.039 inch	
d	
mm	inch
8	0.31
10	0.39
12	0.47



CMC					
Code	Description	D	h	d	⚖️
32401	CMC.32-8	32	14	8	38
32402	CMC.32-10	32	14	10	37
32403	CMC.32-12	32	14	12	36

CMC-SST					
Code	Description	D	h	d	⚖️
32411	CMC.32-SST-8	32	14	8	38
32412	CMC.32-SST-10	32	14	10	37
32413	CMC.32-SST-12	32	14	12	36



Machine elements