

Description: 5320 2.4&5GHz Chip Antenna

PART NUMBER: ANT5320LL24R2455A

Features:

- Size : 5.30x2.00x1.15 mm
- Omni-directional radiation
- Dual-band design
- Tape & reel automatic mounting
- Reflow process compatible
- RoHS compliant

Applications:

- 2.4 & 5 GHz WiFi device
- ISM band equipment

ELECTRICAL SPECIFICATIONS

| | |
|--------------------------------------|--|
| Working Frequency | 2.45 / 5 GHz |
| Bandwidth | 120M / 900 MHz(Min.) |
| Return Loss | 10 dB Min. |
| Polarization | Linear |
| Azimuth Beamwidth | Omni-directional |
| Peak Gain | 2.17 / 3.51 dBi (Typ.) |
| Impedance | 50 Ω |
| Operating Temperature | - 40~105 °C |
| Maximum Power | 1 W |
| Termination | Ag (Environmentally-Friendly Leadless) |
| Resistance to Soldering Heats | 260°C , 10sec. |

NOTE

1. The specification is defined on Pulse evaluation board

In the effort to improve our products, we reserve the right to make changes judged to be necessary.

CONFIDENTIAL AND PROPRIETARY INFORMATION

This document contains confidential and proprietary information of Pulse Electronics, Inc. (Pulse) and is protected by copyright, trade secret and other state and federal laws. Its receipt or possession does not convey any rights to reproduce, disclose its contents, or to manufacture, use or sell anything it may describe. Reproduction, disclosure or use without specific written authorization of Pulse is strictly forbidden.

For more information:

Pulse Worldwide Headquarters
15255 Innovation Drive #100
San Diego, CA 92128
USA
Tel:1-858-674-8100

Pulse/Larsen Antennas
18110 SE 34th St Bldg 2 Suite 250
Vancouver, WA 98683
USA
Tel: 1-360-944-7551

Europe Headquarters
Pulse GmbH & Do, KG
Zeppelinstrasse 15
Herrenberg, Germany
Tel: 49 7032 7806 0

Pulse (Suzhou) Wireless Products Co, Inc.
99 Huo Ju Road(#29 Bldg,4th Phase
Suzhou New District
Jiangsu Province, Suzhou 215009 PR China
Tel: 86 512 6807 9998

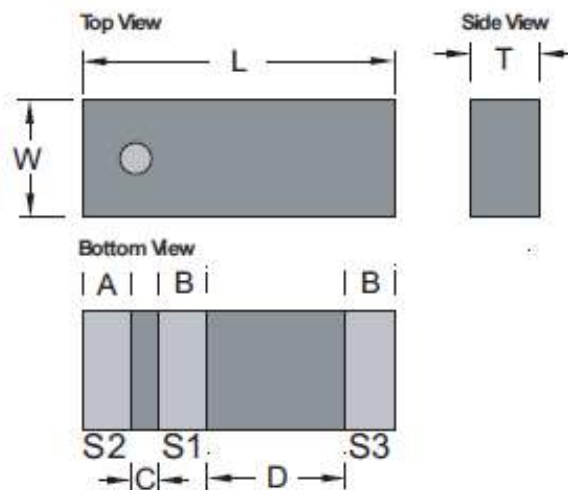


Description: 5320 2.4&5GHz Chip Antenna

PART NUMBER: ANT5320LL24R2455A

MECHANICAL DRAWING

| | Dimension |
|--------|------------------|
| L (mm) | 5.30 ±0.10 |
| W (mm) | 2.00 ±0.10 |
| T (mm) | 1.15 ±0.10 |
| A (mm) | 0.82 ±0.10 |
| B (mm) | 0.83 ±0.10 |
| C (mm) | 0.46 ±0.10 |
| D (mm) | 2.33 ±0.10 |

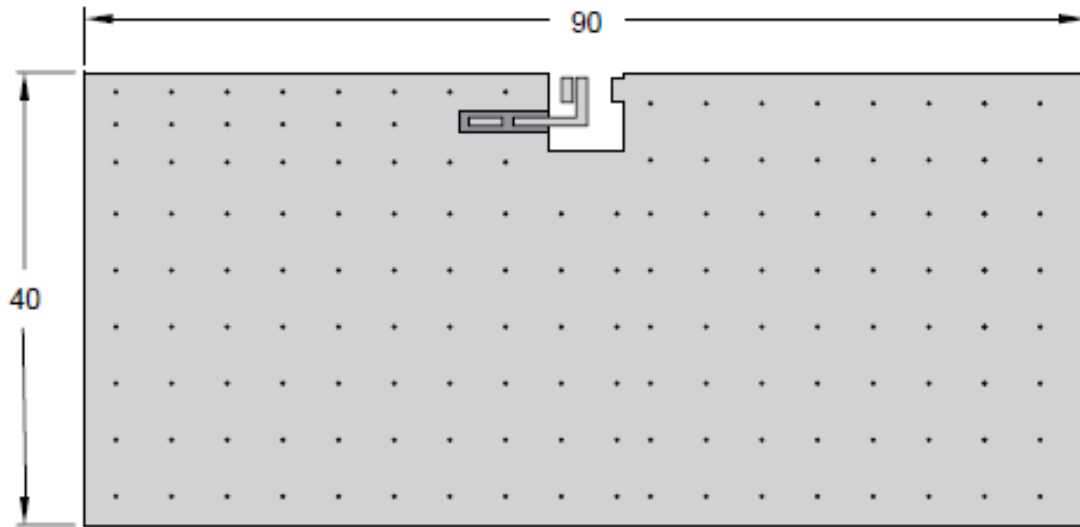


| Terminal name | Function |
|----------------------|-----------------|
| S1 | Feeding Point |
| S2 | Soldering Point |
| S3 | Ground Point |

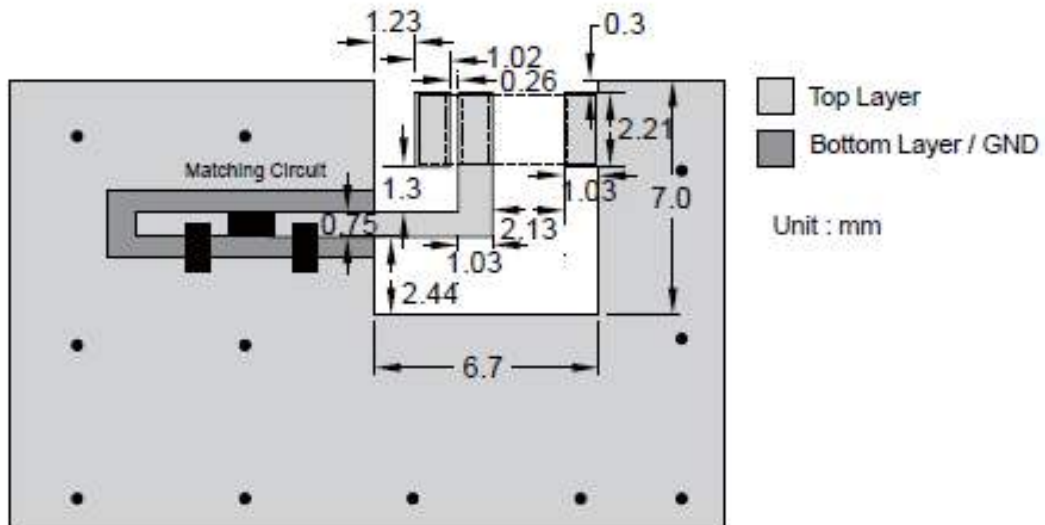
Description: 5320 2.4&5GHz Chip Antenna

PART NUMBER: ANT5320LL24R2455A

REFERENCE DESIGN OF EVALUATION BOARD



Outlook and dimension of evaluation board



Dimension of footprint

In the effort to improve our products, we reserve the right to make changes judged to be necessary.

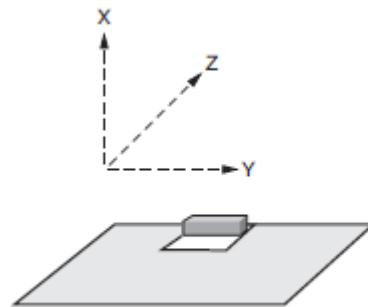
CONFIDENTIAL AND PROPRIETARY INFORMATION

This document contains confidential and proprietary information of Pulse Electronics, Inc. (Pulse) and is protected by copyright, trade secret and other state and federal laws. Its receipt or possession does not convey any rights to reproduce, disclose its contents, or to manufacture, use or sell anything it may describe. Reproduction, disclosure or use without specific written authorization of Pulse is strictly forbidden.

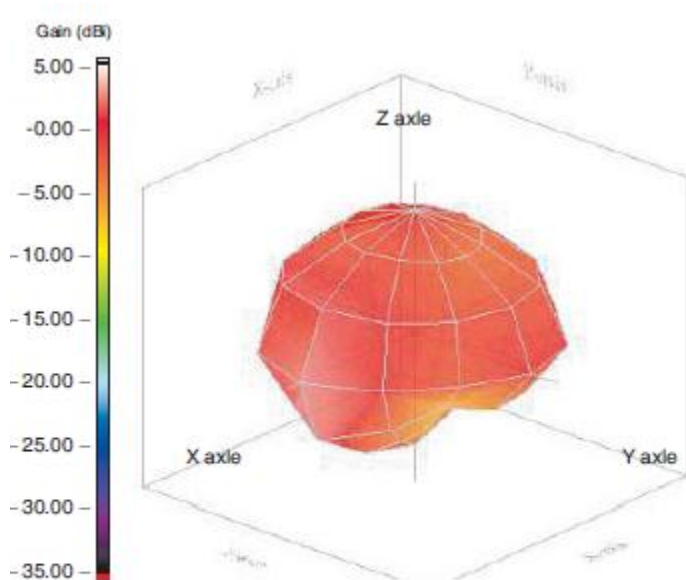
Description: 5320 2.4&5GHz Chip Antenna

PART NUMBER: ANT5320LL24R2455A

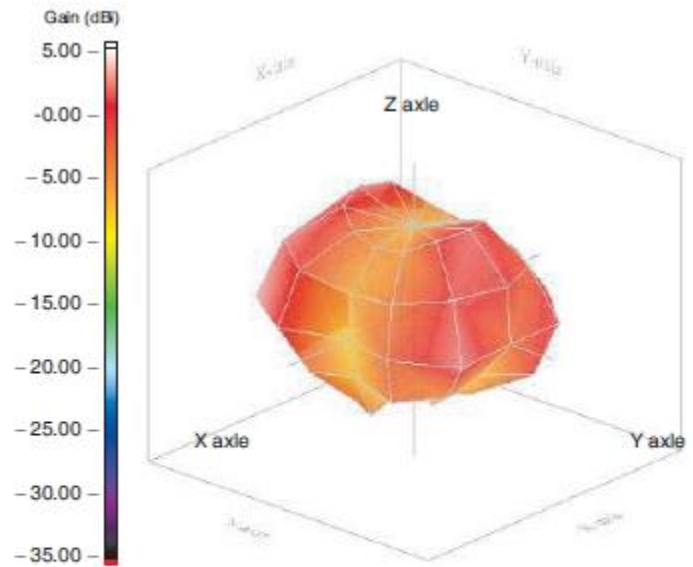
REFERENCE DESIGN OF EVALUATION BOARD



Evaluation board and XYZ direction



Frequency= 2.45 GHz
Max gain = 2.17 dBi, at (90,0)
MEG (mean effective gain)= -1.23 dBi
Directivity (dB) = 3.48
Efficiency = -1.31 dB, 73.98 %



Frequency= 5.47 GHz
Max gain = 3.51 dBi, at (90,300)
MEG (mean effective gain)= -2.68 dBi
Directivity (dB) = 4.95
Efficiency = -1.44dB, 71.82 %

YNH00107

Radiation pattern

In the effort to improve our products, we reserve the right to make changes judged to be necessary.

CONFIDENTIAL AND PROPRIETARY INFORMATION

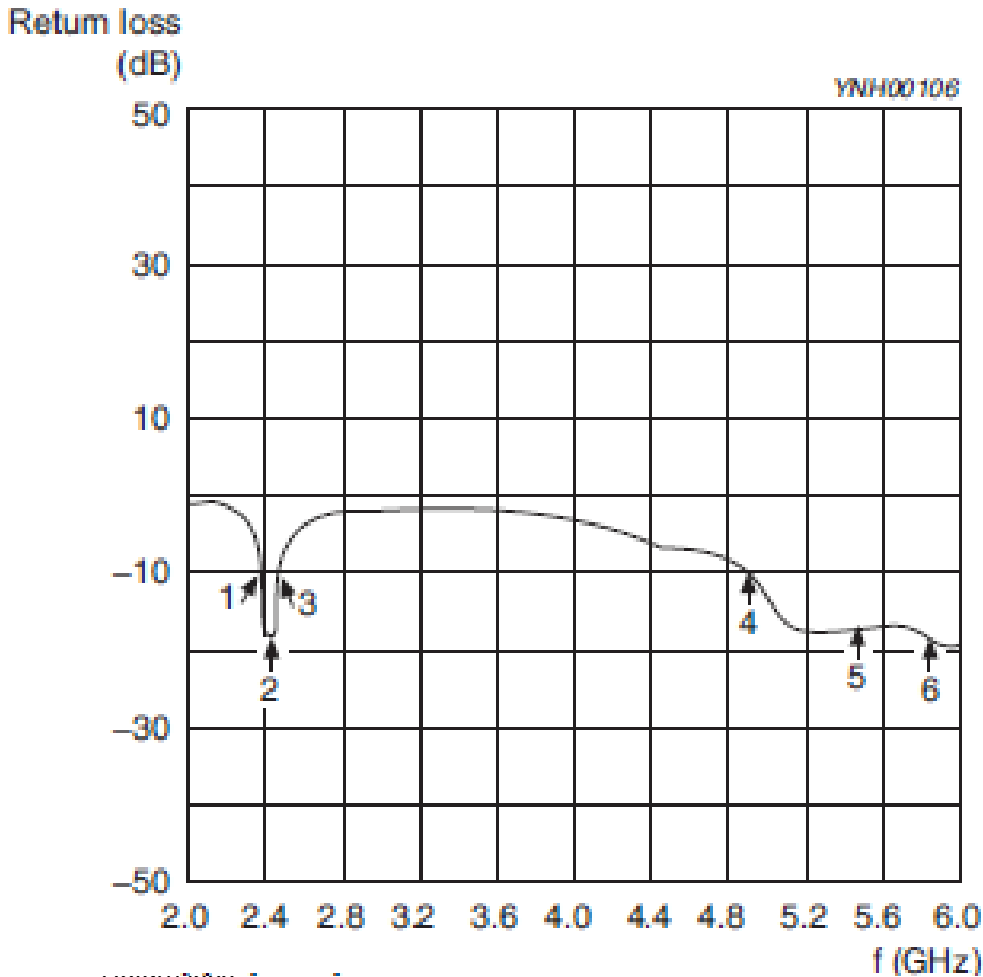
This document contains confidential and proprietary information of Pulse Electronics, Inc. (Pulse) and is protected by copyright, trade secret and other state and federal laws.

Its receipt or possession does not convey any rights to reproduce, disclose its contents, or to manufacture, use or sell anything it may describe. Reproduction, disclosure or use without specific written authorization of Pulse is strictly forbidden.

Description: 5320 2.4&5GHz Chip Antenna

PART NUMBER: ANT5320LL24R2455A

ELECTRICAL PERFORMANCES



Maker data
 2.38GHz, -10.00dB
 2.45GHz, -16.20dB
 2.50GHz, -10.00dB
 4.95GHz, -10.00dB
 5.47GHz, -16.80dB
 5.85GHz, -18.20dB

In the effort to improve our products, we reserve the right to make changes judged to be necessary.

CONFIDENTIAL AND PROPRIETARY INFORMATION

This document contains confidential and proprietary information of Pulse Electronics, Inc. (Pulse) and is protected by copyright, trade secret and other state and federal laws. Its receipt or possession does not convey any rights to reproduce, disclose its contents, or to manufacture, use or sell anything it may describe. Reproduction, disclosure or use without specific written authorization of Pulse is strictly forbidden.

Description: 5320 2.4&5GHz Chip Antenna

PART NUMBER: ANT5320LL24R2455A

REVISION HISTORY

| Revision | Date | Description |
|-----------|---------------|-------------|
| Version 1 | Nov. 23, 2020 | - New issue |

In the effort to improve our products, we reserve the right to make changes judged to be necessary.

CONFIDENTIAL AND PROPRIETARY INFORMATION

This document contains confidential and proprietary information of Pulse Electronics, Inc. (Pulse) and is protected by copyright, trade secret and other state and federal laws. Its receipt or possession does not convey any rights to reproduce, disclose its contents, or to manufacture, use or sell anything it may describe. Reproduction, disclosure or use without specific written authorization of Pulse is strictly forbidden.

