

**Sales Outline Drawing**

Revision **J**

May not be suitable for all medical and aerospace applications.  
**Specifications: Contact Mallory Sonalert to discuss your application.**

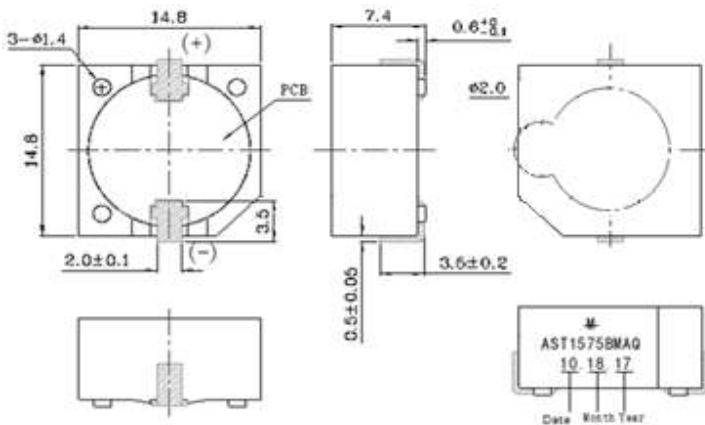
**NO CIRCUITRY**

Oscillation Frequency (Hz)	3650 ± 500
Operating Voltage (Vp-p)	3 ~ 20
Rated Voltage (Vp-p)	7.0
Current Consumption Max. (mA)	5 at Rated Voltage
Sound Pressure Level (dB/min)	85 at 10cm at Rated Voltage
Capacitance (pF)	15,000 ± 30% at 100 Hz 1V
Operating Temperature (°C)	-30 ~ +85
Storage Temperature (°C)	-40 ~ +85
Type of Connection Terminal	SMD
Housing	PPS plastic resin (Color : Black)
Weight (Grams)	2.0
Condition by reflow soldering (°C)	255 ± 5 / within 5 sec
Condition by hand soldering (°C)	350 ± 20 / within 5 sec
Options	For other options contact factory

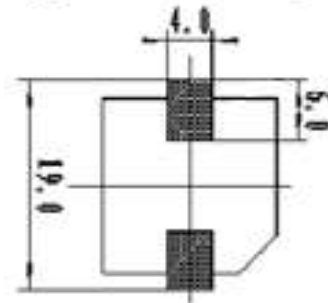
**Dimensions:** (units: mm)  
 After Code Date: 1803-3

PS: Vp-p=1/2duty, square wave

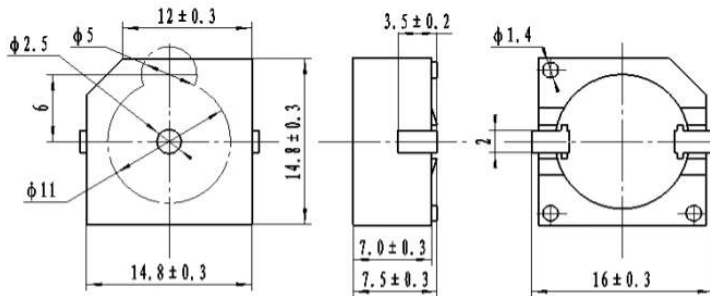
RoHS Compliant



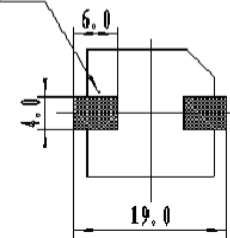
Suggested Pad PCB-Layout



Before Code Date: 1803-2



Suggested Pad PCB-Layout



**Packaging:** Parts are supplied on reels (300 pcs per tape and reel).  
 Units come with wash label and are acceptable for aqueous wash.