

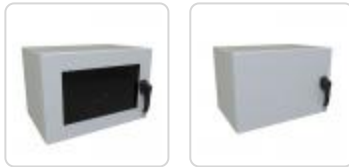


Quality Products. Service Excellence.

UL and NEMA Type 4, 12 Double-Hinged Wall Mount Cabinet *EN4DH* Series

Note: This product line has been discontinued as a stocked series. Information is for reference only. For alternative solution assistance, please **contact Hammond here** or call: USA (716) 630-7030, Canada and International (519) 822-2960.

Features



- Dual access to equipment via the double hinge design.
- Allows for 120 degrees of access to both the front and rear of equipment, allowing for easy maintenance.
- A heavy-duty wall mounting back pan can be used for cable entry and includes collar stud provision for an optional inner panel.
- The rear of the enclosure can be mounted with optional external mounting feet.
- The Interior latch releases the center section for added security; no tools are required.
- Both solid and window door options include a combination key and padlock handle for added security.
- One (1) pair of threaded 10-32 EIA-compliant rack rails with cable pass-through are included.
 - Includes starter pack (25) 10-32 screws.
- Rails are adjustable and can be installed at your desired location.
 - Additional rails are available and sold separately.
- Bonding studs are provided on the door, body and back pan.

Standards

- UL 508A Type 1, 3, 3R, 4, 12
- CSA Type 1, 3, 3R, 4, 12
- Complies with NEMA type 3R, 4, 12; IEC 60529 and IP66

Specifications

- Constructed in 14-gauge steel.
- Smooth continuous welded seams without knockouts, cutouts or holes.
- Seamless poured-in-place gasket for added protection in both indoor and outdoor environments.
- Window door constructed with UV-resistant polycarbonate material.
- Zinc-plated rack rails are drilled and tapped 10-32 to EIA 19" standards.
- Finished in a textured RAL7035 light gray powder paint.
- TAA-compliant for GSA Schedule purchases.
- RoHS Compliant.
- Manufactured in North America within an ISO 9001:2015 certified facility.

We're almost complete with our redesign of the EN4DH. Sign-up below for updates:





Email*

First name

Last name

Company name

Phone number

Country/Region

This reCAPTCHA is for testing purposes only. Please report to the site admin if you are experiencing issues.

protected by reCAPTCHA

[Privacy](#) - [Terms](#)



Submit

Accessories

- Pole Mounting Kit
- Climate Control Sizing Software
- 900-1200 BTU/H Outdoor Air Conditioner
- 17-38 CFM Filterfans
- 900-1300 BTU/H Indoor Air Conditioner
- 125-1300 W Fan Heater with Thermostat



Solid Door Part No.	Window Door Part No.	Overall Dimensions			Rack Units	Mounting Dimensions		
		Height	Width	Depth		Height	Width	Center Depth
EN4DH162424LG	EN4DH162424WLG	16.00	24.00	24.00	7U	12.25	19.00	18.50
EN4DH202424LG	EN4DH202424WLG	20.00	24.00	24.00	10U	17.50	19.00	18.50
EN4DH242424LG	EN4DH242424WLG	24.00	24.00	24.00	12U	21.00	19.00	18.50
EN4DH362424LG	EN4DH362424WLG	36.00	24.00	24.00	19U	33.25	19.00	18.50
EN4DH482424LG	EN4DH482424WLG	48.00	24.00	24.00	26U	45.50	19.00	18.50

Optional Rear Inner Panel

Part No.	Overall Dimensions	
	H	W
EPGDH1624	12.20	20.20
EPGDH2024	16.20	20.20
EPGDH2424	20.20	20.20
EPGDH3624	32.20	20.20
EPGDH4824	44.20	20.20

Optional Additional Pair of Panel Rails

Part No.	Rack Units
EPDHR7	7
EPDHR10	10
EPDHR12	12
EPDHR19	19
EPDHR26	26

What's in the Box

Qty Included	Description	Replacement Part No.
1	Enclosure	
4	1/4-20 Nut	
4	1/4-20 Keps nut	
4	Neoprene 0.875in Washer	
4	3/8-16 Nut	
4	3/8-16 x 0.75in Screw	
4	5/16-18 Keps nut	
1	Installation instructions	
25	10-32 x 0.75in rack screws	SCREW1032-25

Data subject to change without notice

8/9/23, 6:11 AM

UL and NEMA Type 4, 12 Double-Hinged Wall Mount Cabinet (EN4DH Series) - Hammond Mfg.

Tags: **Sectional Wall Mount Rack, Pivoting Rack, Data Wall Cabinet, Dual Hinge, Hinged Swing Gate, NEMA 4 Wall Cabinet, Dust-Tight Wall Mount, outdoor network enclosures, Edge Computing**

© 2023. Hammond Manufacturing Ltd. All rights reserved.