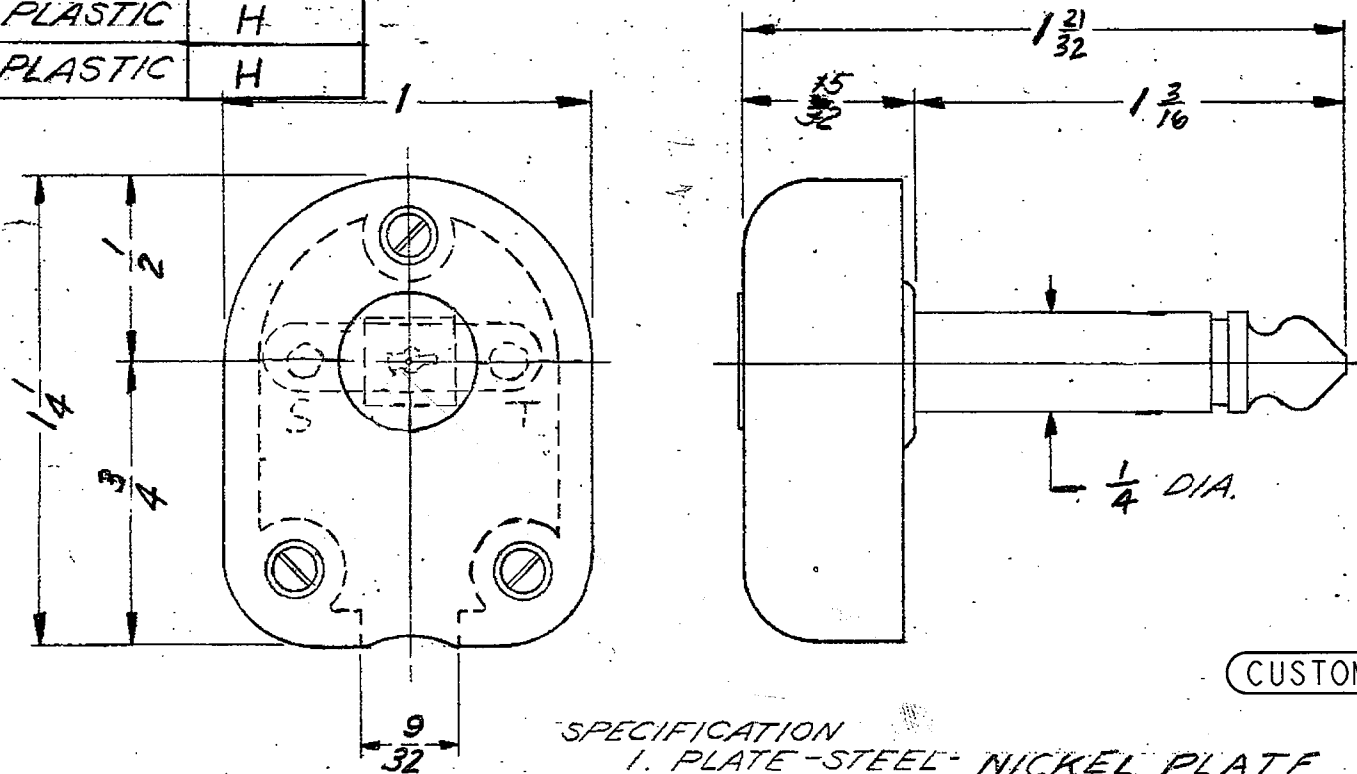


PART NO.	HANDLE	REV.
227	BLK. PLASTIC	H
229	RED PLASTIC	H

227
229



CUSTOMER DRAWING

- SPECIFICATION**
1. PLATE - STEEL - NICKEL PLATE
 2. TIP & SLEEVE - BRASS - NI. PL.
 3. INSULATORS - NYLON & BAKELITE
 4. TERMINALS - BRASS - ELECTRO TIN PLATED PER -C2

ISS	REV.	BY	DATE
2	ADDED NOTE #13142	EB	1-18-61
3	A IN CORRECT PICTURE OF TERM. WAS	EB	1-19-61
A	ELECTRO TIN PLATED PER -C2 WAS HOT TINNED	EB	1-19-61
B	ECO # 14982	VL	1-19-61
C	ECO # 14853	VL	1-19-61
D	ECO # 15683	VL	1-19-61
F	ECO # 19660	ES	1-19-61
G	ECO # 20559	TA0	1-19-61
H	ECO # 20627	TA0	1-19-61

NOTE

- 1-DECIMAL DIMENSION ± .005.
- 2-FRACTIONAL DIMENSION ± 1/64.
- 3-ANGLES ± 1/2°.
- 4-REMOVE ALL BURRS.
- 5-DO NOT SCALE DRAWING.
- 6-ALL DIMENSIONS IN INCHES.
- 7-SUBJECT TO CHANGE WITHOUT NOTICE. ALWAYS OBTAIN NEW PRINT FOR EACH ORDER.
- 8-FOR THREADS USE PLUG AND RING GAGES ONLY.

SWITCHCRAFT, INC.
5555 N. ELSTON
CHICAGO 30, ILLINOIS

MATERIAL		DRAWN BY	DATE
SIZE	WIDTH	C.M.	1-18-61
MULT.	LBS. PER M	CHECKED	DATE
USED ON	FINISH	W.H.	1-19-61
		APPROVED	DATE
		L.G.	1-19-61
		REQ.	SCALE
		ISSUE	DATE
		H	
NAME		PART NO.	
2 COND. SOLDER TERM. FLAT PLUG		227	
		229	

(12) (16) (46)