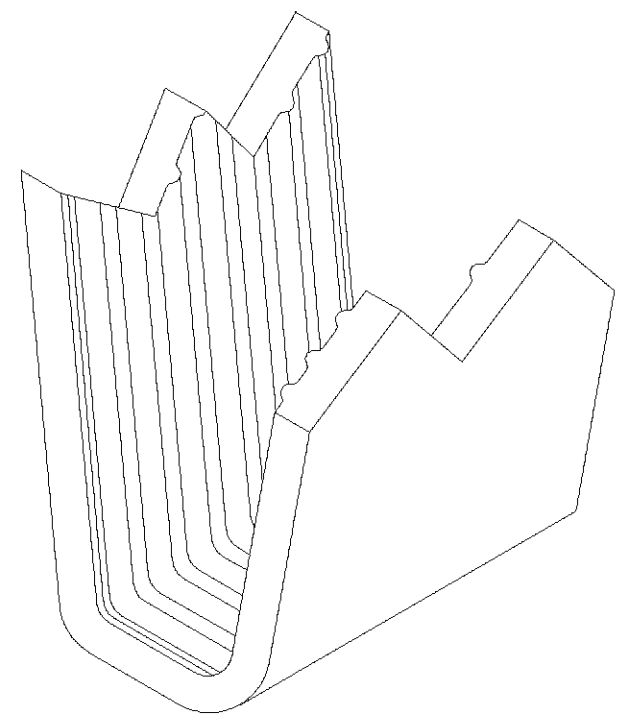
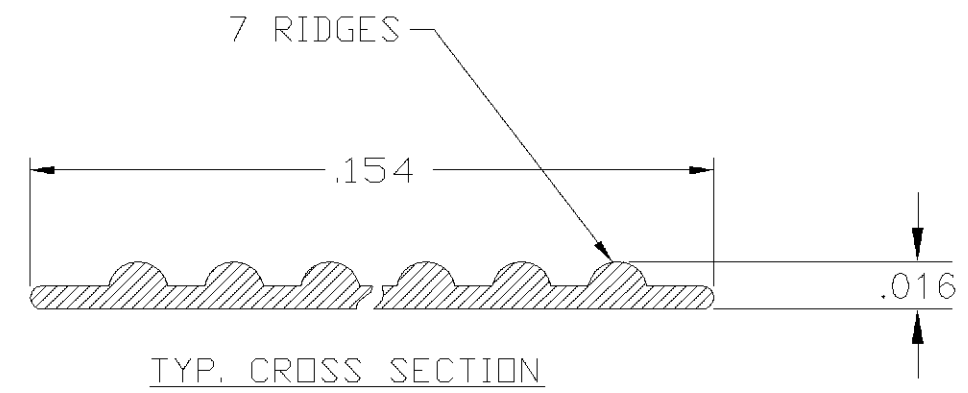
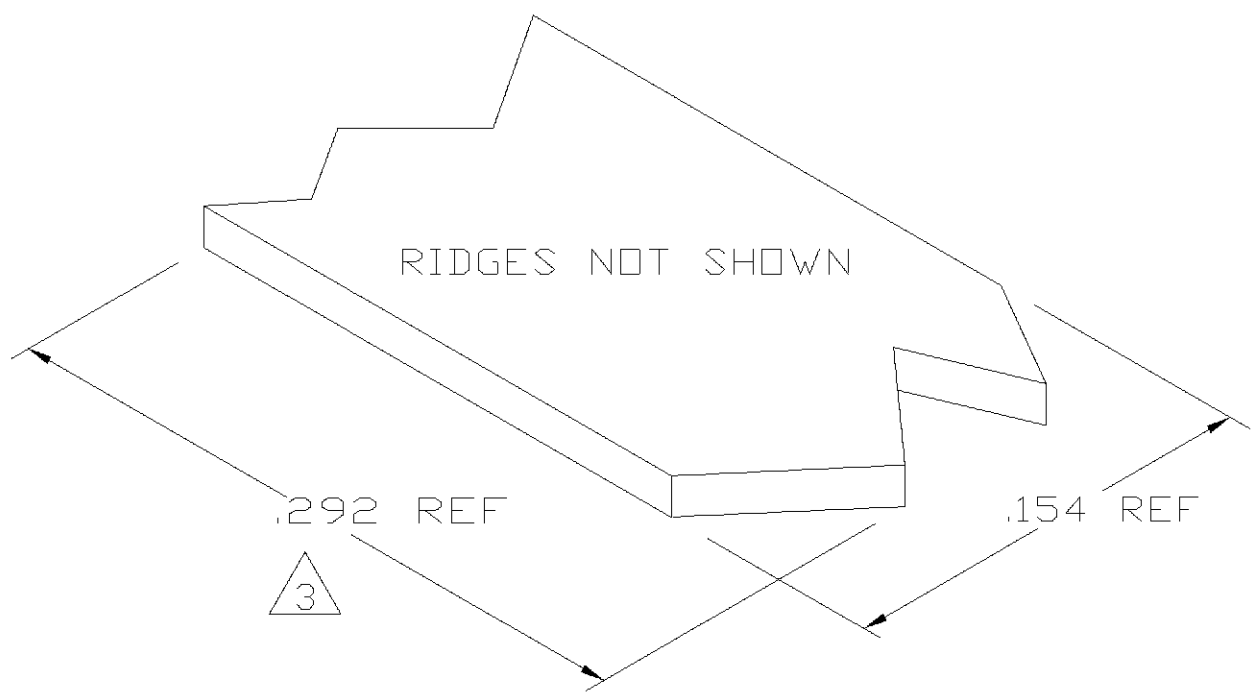


THIS DRAWING IS UNPUBLISHED. RELEASED FOR PUBLICATION
 © COPYRIGHT BY TYCO ELECTRONICS CORPORATION. ALL RIGHTS RESERVED.

| LOC | DIST | REVISIONS | | | |
|-----|------|-------------|---------------------------|---------|----------|
| P | LTR | DESCRIPTION | DATE | DWN | APVD |
| AF | 50 | 0 | TRANSFERED TO TYCO FORMAT | 03MAY02 | MF EH |

- 1 CRIMPBAND MATERIAL PROVIDED IN CONTINUOUS STRIP.
- 2 REFERENCE DESCRIPTIVE PART NUMBER G061D16BX.
- 3 BLANK LENGTH DETERMINED BY 061 TOOLSET.



PARTIAL FORMED VIEW (REF)
FORMED BY APPLICATION TOOLING

1601517-1
PART NUMBER

| | | | | | | |
|--|--|--------------------------------------|---|--------------------|-------------------------|--------------------|
| THIS DRAWING IS A CONTROLLED DOCUMENT. | | DWN MICHAEL S. FEHER 03MAY2002 | Tyco Electronics Corporation Harrisburg, PA 17105-3608 | | | |
| DIMENSIONS: INCHES | TOLERANCES UNLESS OTHERWISE SPECIFIED: | CHK EDWARD HOWARD 16APR2002 | NAME - | | | |
| | 0 PLC ± - | APVD EDWARD HOWARD 16APR2002 | PRODUCT SPEC - | | | |
| | 1 PLC ± - | PRODUCT SPEC | APPLICATION SPEC - | | | |
| MATERIAL UNS C26000 BRASS | FINISH NONE | WEIGHT | SIZE A3 | CAGE CODE 00779 | DRAWING NO C-1601517 | RESTRICTED TO - |
| | | CUSTOMER DRAWING | SCALE 1:1 | SHEET 1 OF 1 | REV 0 | |