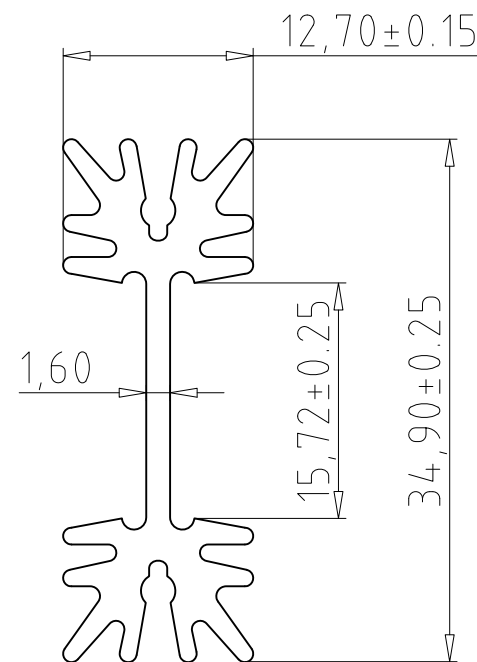
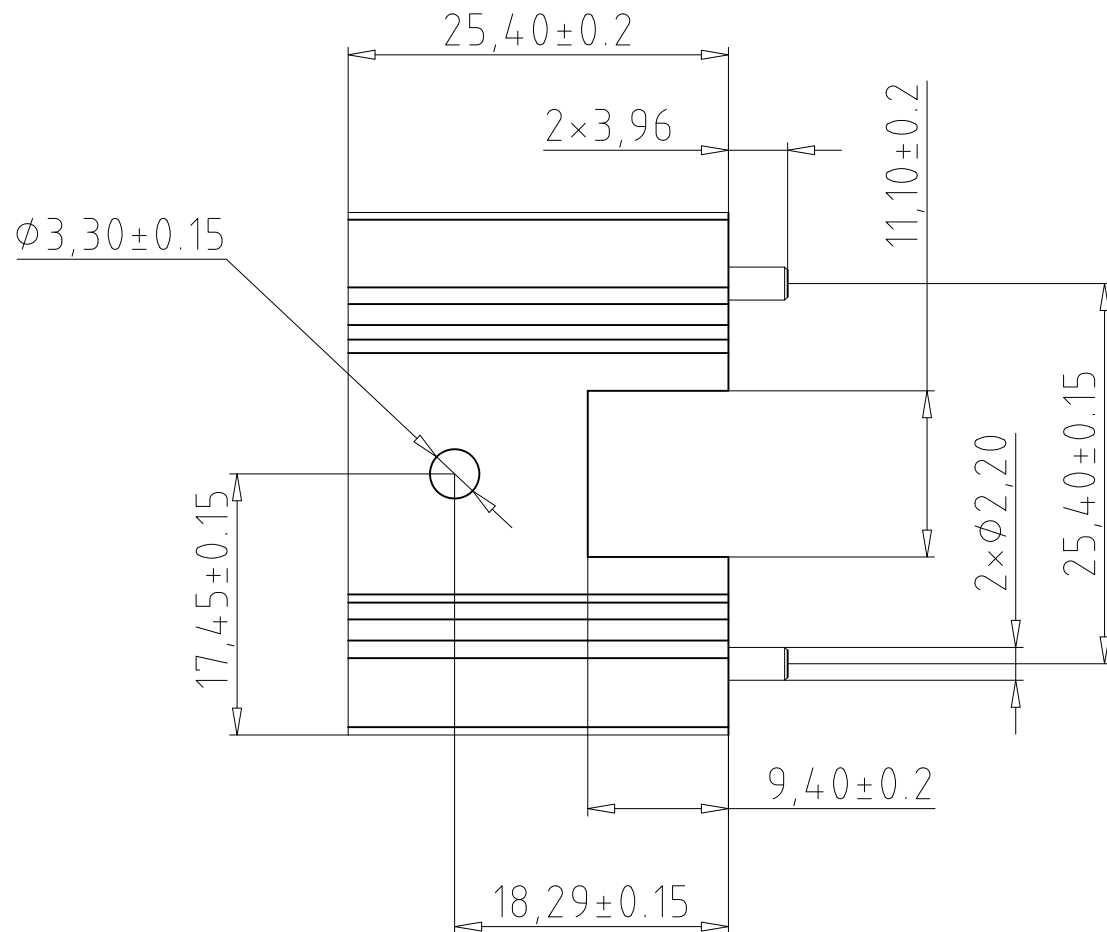


REV	DESCRIPTION	DATE	ORIGINATOR	APPROVED
A	--	--	--	--



NOTES:

- 1.MATERIA: AL6063-T5
- 2.FINISH:Black Anodize
- 3.BREAK AND DEBUR ALL SHARP EDGES
- 4.PART SHALL BE ROHS COMPLIANT

ALL DIMENSIONS ARE IN mm Unindicated TOL. .X ± 0.35 mm .XX ± 0.25 mm .XXX ± 0.13 mm ANG. $\pm 1.0^\circ$	FINISH Black Anodized				
	DRAWN BY Kevin Zhong				
	CHECKED BY	CUSTOMER PART NUMBER	DWG SIZE A4	CUS REV A	CS REV A
	APPROVED BY	CS PART NUMBER CSBL-176-A-0	SHEET 1 of 1	SCALE 1:1	DATE 04/26/2022