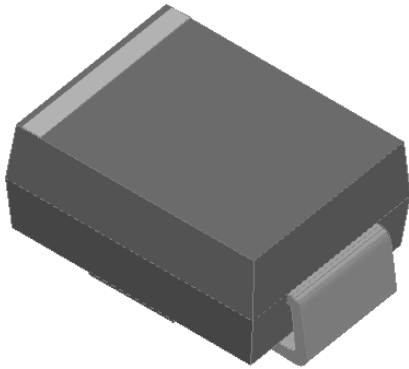




# HS2A THRU HS2M

## Surface Mount High Efficient Rectifier

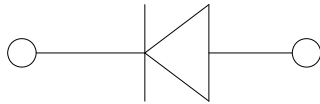


### Features

- Low profile package
- Ideal for automated placement
- Glass passivated chip junction
- High forward surge capability
- Super fast reverse recovery time
- Meets MSL level 1, per J-STD-020, LF maximum peak of 260 °C

### Typical Applications

For use in high frequency rectification of power supplies, inverters, converters, and freewheeling diodes for consumer and telecommunication.



### Mechanical Data

- **Package:** DO-214AA (SMB)  
Molding compound meets UL 94 V-0 flammability rating, RoHS-compliant, halogen-free
- **Terminals:** Tin plated leads, solderable per J-STD-002 and JESD22-B102
- **Polarity:** Cathode line denotes the cathode end

### ■Maximum Ratings (Ta=25°C Unless otherwise specified)

PARAMETER	SYMBOL	UNIT	HS2A	HS2B	HS2D	HS2F	HS2G	HS2J	HS2K	HS2M
Device marking code			HS2A	HS2B	HS2D	HS2F	HS2G	HS2J	HS2K	HS2M
Repetitive peak reverse voltage	VRRM	V	50	100	200	300	400	600	800	1000
Average rectified output current @60Hz sine wave, resistance load, TL (Fig.1)	IO	A	2.0							
Forward Surge Current (Non-repetitive) @60Hz half-sine wave, 1 cycle, Ta=25°C	IFSM	A	50							
Storage temperature	Tstg	°C	-55~+150							
Junction temperature	Tj	°C	-55~+150							

### ■Electrical Characteristics (Ta=25°C Unless otherwise specified)

PARAMETER	SYMBOL	UNIT	TEST CONDITIONS	HS2A	HS2B	HS2D	HS2F	HS2G	HS2J	HS2K	HS2M
Maximum instantaneous forward voltage drop per diode	VF	V	IFM=2.0A	1.0			1.3	1.7			
Maximum reverse recovery time	tr	ns	IF=0.5A, IR=1.0A, IIR=0.25A	50					75		
Maximum DC reverse current at rated DC blocking voltage per diode @ VRM=VRRM	IRRM	µA	Ta=25°C	5.0							
			Ta=125°C	100							



# HS2A THRU HS2M

## ■ Thermal Characteristics (T<sub>a</sub>=25°C Unless otherwise specified)

PARAMETER	SYMBOL	UNIT	HS2A	HS2B	HS2D	HS2F	HS2G	HS2J	HS2K	HS2M
Typical Thermal resistance	R <sub>θJ-A</sub> (1)	°C/W	70 <sup>(1)</sup>							
	R <sub>θJ-L</sub> (1)		20 <sup>(1)</sup>							

Note:  
 (1) Thermal resistance from junction to ambient and from junction to lead mounted on P.C.B. with 0.3" x 0.3" (8.0 mm x 8.0 mm) copper pad areas

## ■ Characteristics (Typical)

FIG.1: I<sub>o</sub>-T<sub>L</sub> Cure

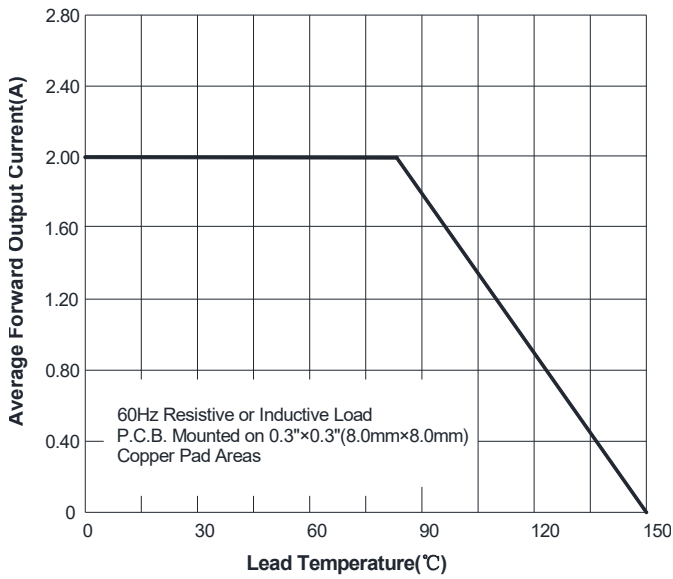


FIG.2: Forward Surge Current Capability

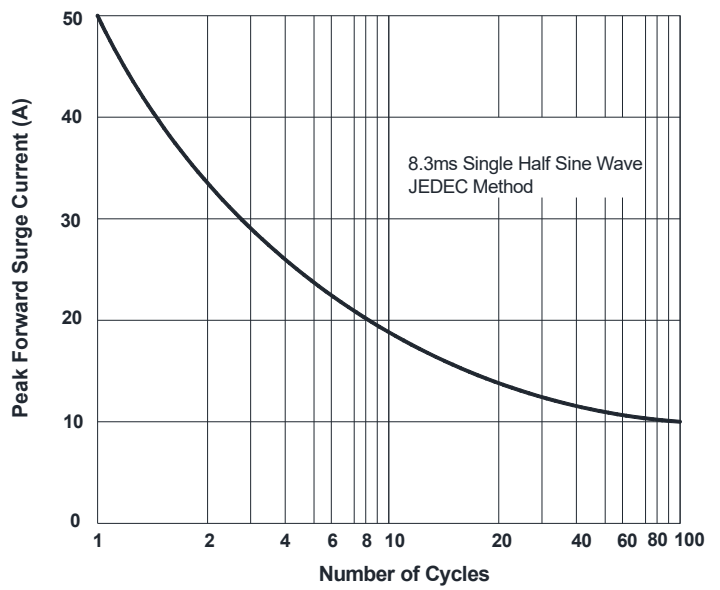


FIG.3: Typical Forward Characteristics

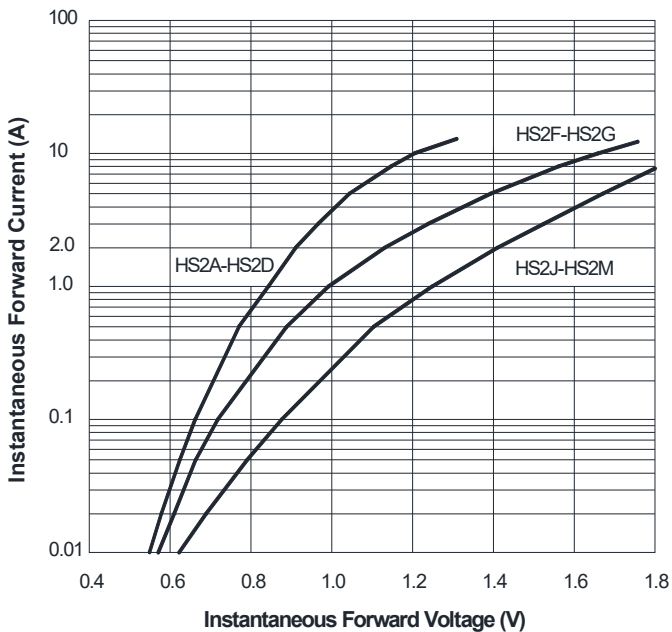
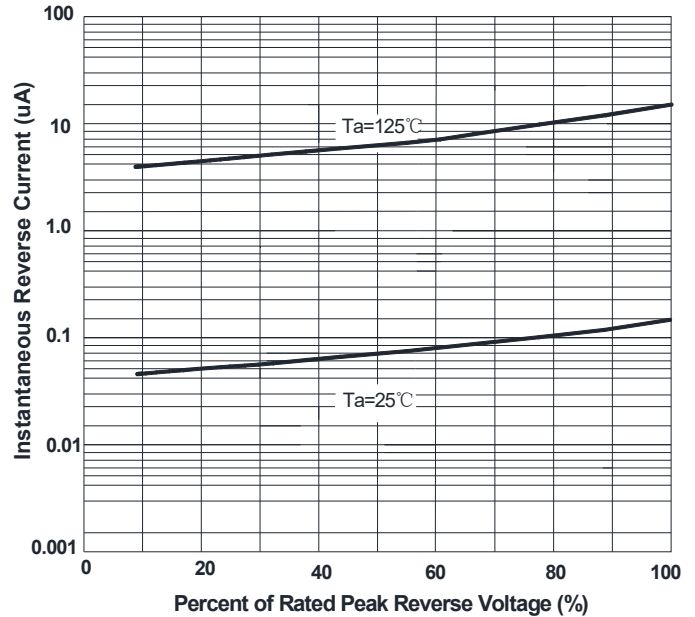


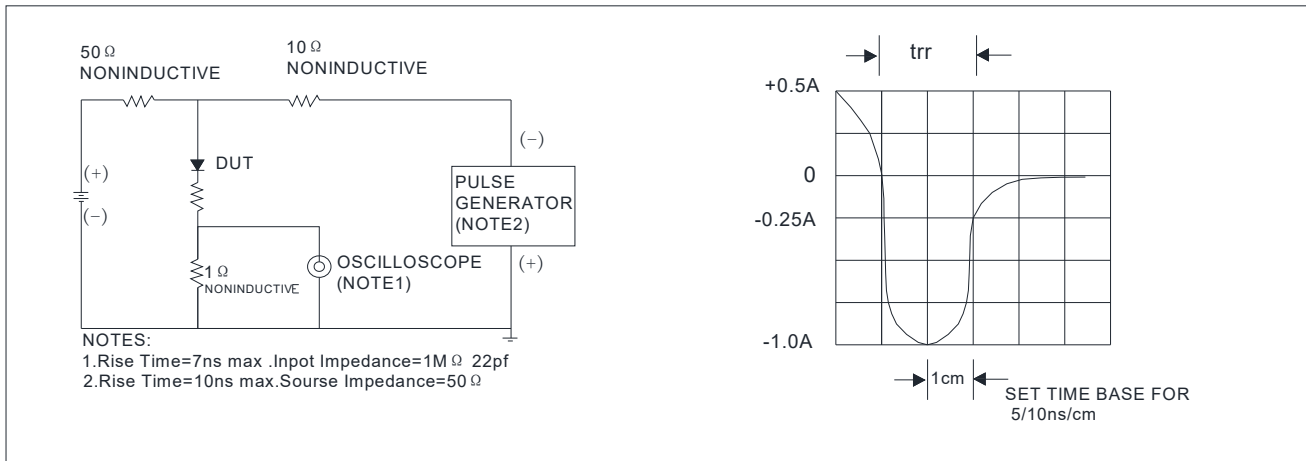
FIG.4: Typical Reverse Characteristics





# HS2A THRU HS2M

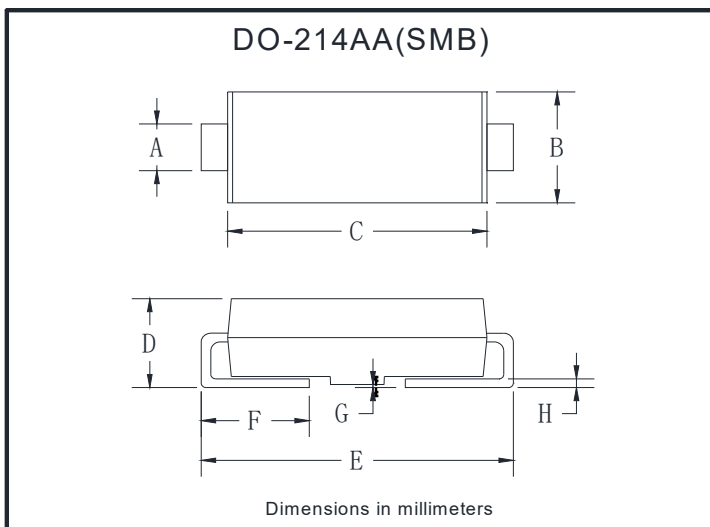
FIG.5: Diagram of circuit and Testing wave form of reverse recovery time



## Ordering Information (Example)

PREFERED P/N	PACKING CODE	UNIT WEIGHT(g)	MINIMUM PACKAGE(pcs)	INNER BOX QUANTITY(pcs)	OUTER CARTON QUANTITY(pcs)	DELIVERY MODE
HS2A-HS2M	F1	Approximate 0.096	3000	6000	48000	13" reel
HS2A-HS2M	F2	Approximate 0.096	750	3000	24000	7" reel
HS2A-HS2M	F3	Approximate 0.096	500	2000	16000	7" reel

## Outline Dimensions

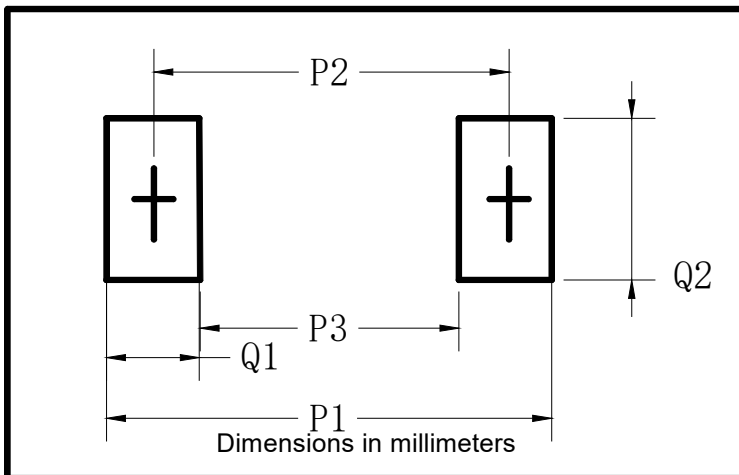


DO-214AA(SMB)		
Dim	Min	Max
A	1.85	2.15
B	3.30	3.94
C	4.25	4.75
D	1.99	2.61
E	5.21	5.59
F	0.90	1.41
G	0.10	0.20
H	0.15	0.31



## HS2A THRU HS2M

### ■ Suggested pad layout



DO-214AA(SMB)	
Dim	Millimeters
P1	6.8
P2	4.3
P3	1.8
Q1	2.5
Q2	2.3



## HS2A THRU HS2M

---

### Disclaimer

The information presented in this document is for reference only. Yangzhou Yangjie Electronic Technology Co., Ltd. reserves the right to make changes without notice for the specification of the products displayed herein to improve reliability, function or design or otherwise.

The product listed herein is designed to be used with ordinary electronic equipment or devices, and not designed to be used with equipment or devices which require high level of reliability and the malfunction of which would directly endanger human life (such as medical instruments, transportation equipment, aerospace machinery, nuclear-reactor controllers, fuel controllers and other safety devices), Yangjie or anyone on its behalf, assumes no responsibility or liability for any damages resulting from such improper use of sale.

This publication supersedes & replaces all information previously supplied. For additional information, please visit our website [http:// www.21yangjie.com](http://www.21yangjie.com) , or consult your nearest Yangjie's sales office for further assistance.