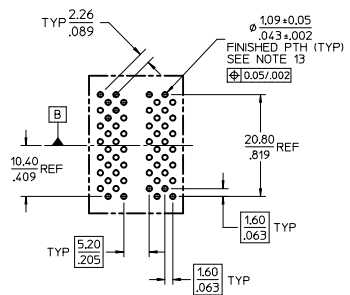
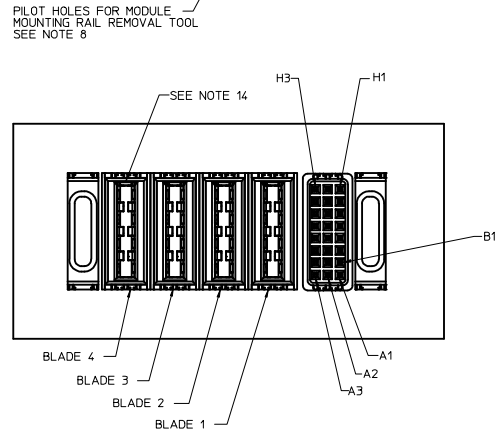
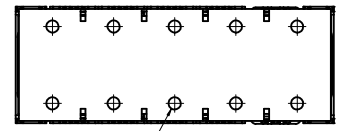
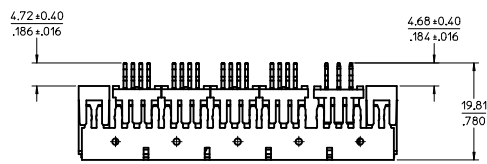
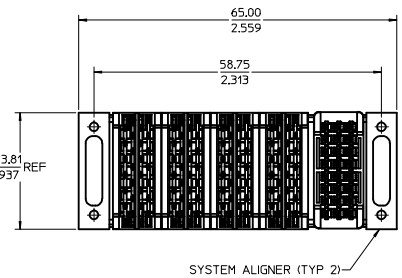
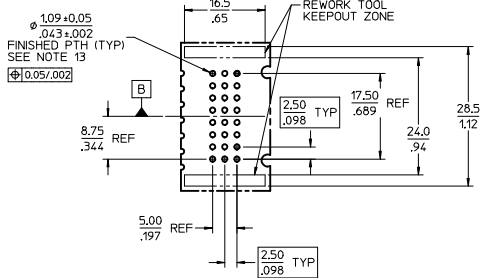
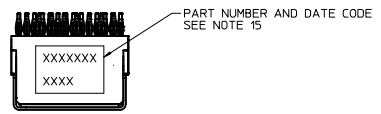


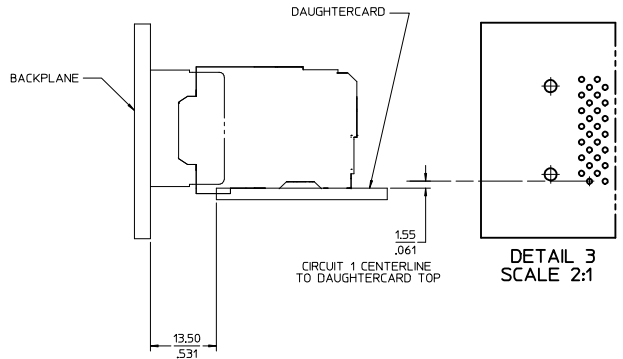
ITEM NUMBER	PART DESCRIPTION
75541-1004	TIN ONLY PRESS FIT TAILS



DETAIL 1  
SCALE 2:1  
150 MODULES

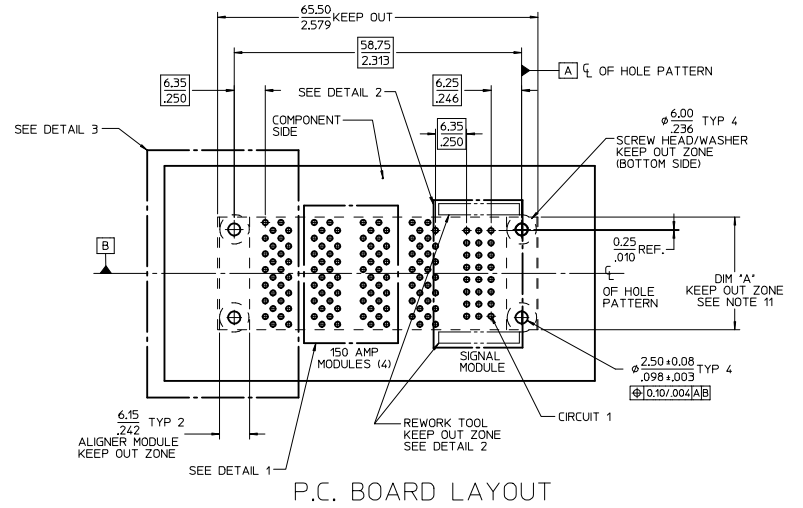


DETAIL 2  
SCALE 2:1  
SIGNAL MODULE



DETAIL 3  
SCALE 2:1

- NOTES:
- MATERIAL:
    - HOUSINGS: HIGH TEMPERATURE PLASTIC (LCP OR EQUIVALENT)
    - TERMINALS: HIGH CONDUCTIVITY COPPER ALLOY
    - PLATING: 0.00127/0.00055 NICKEL OVERALL WITH 0.00254/0.00100 SELECTIVE TIN ON SOLDER TAILS AND 0.000762/0.00030 SELECTIVE GOLD ON CONTACT AREA.
    - ALIGNERS: ZINC DIE CAST WITH CLEAR CHROMATE FINISH
    - RAILS: STAINLESS STEEL
    - LUBRICATION: EB1 IN CONTACT AREA
  - MODULES ARE ASSEMBLED TO RAILS.
  - PACKAGING: ASSEMBLIES TO BE TRAY PACKED PER PACKAGING SPEC PK-75541-\*\*\*\*.
  - INDIVIDUAL MODULES ARE RATED FOR VOLTAGE AND CURRENT RATINGS PER PS-75431-999.
  - PC BOARD REQUIRES PRESS FIT HOLES. SEE PC BOARD LAYOUT.
  - PC BOARD TO BE 3.18/1.125 MIN THICK.
  - PRODUCT TO MEET RoHS REQUIREMENTS.
  - MODULE MOUNTING RAIL TO BE REMOVED AFTER PRESSING THE ASSEMBLY INTO THE PC BOARD WITH TOOL 62202-2200. PER APPLICATION SPEC AS-75541-100.
  - THE AVERAGE INSERTION FORCE REQUIRED TO INSERT THE PCB IS 10.88kN/2250lbf.
  - RECEPTACLE MATES TO MOLEX PLUG P/N 75555-1004.
  - KEEPOUT ZONE DIMENSION 'A': 25.00/.984 ON PCB SURFACE  
26.00/1.024 AT 3.50/.138 ABOVE PCB SURFACE  
46.00/1.811 AT 9.00/.354 ABOVE PCB SURFACE
  - ALIGNER MODULE SCREWS DELIVERED WITH CONNECTOR ASSEMBLY (4 PER ASSEMBLY): -#2-56 UNC-2A, ZINC PLATED STEEL, 12.70/500 LONG, 4.2/1.6 DIA PAN HEAD TORX DRIVE. MOLEX P/N 73774-4006. RECOMMENDED TORQUE: 0.20 N-m (1.77 lb-in)
  - PLATED THRU HOLE DIMENSIONS:  $\phi 1.09\pm 0.05/0.43\pm 0.02$  FINISHED (PTH) TYP  
 $\phi 1.200\pm 0.13/0.472\pm 0.005$  DRILL  
0.025/.001 MIN COPPER PLATE THICKNESS
  - HOUSING CORE GEOMETRY MODIFIED ON REV B4 AS SHOWN.
  - PART NUMBER AND DATE CODE (2 DIGIT WEEK, 2 DIGIT YEAR) LOCATED AS SHOWN.



P.C. BOARD LAYOUT

INITIAL RELEASE EC NO: UCP2014-2356 DRAWN BY: CHYK/BANDURA APPR: APATEL DATE: 2014/01/20 DATE: 2014/01/21	QUALITY SYMBOLS	GENERAL TOLERANCES (UNLESS SPECIFIED)	DIMENSION STYLE	SCALE	DESIGN UNITS	THIRD ANGLE PROJECTION	
	$\nabla=0$ $\nabla=0$ $\nabla=0$	4 PLACES ±---  --- 3 PLACES ±---  --- 2 PLACES ±.25  --- 1 PLACE ±.38  --- 0 PLACE ±  ---	UNLESS SPECIFIED DIM INCH ANGULAR ±1/2° DRAFT WHERE APPLICABLE MUST REMAIN WITHIN DIMENSIONS	MM/IN DRAWN BY: GB CHECKED BY: BANDURA APPROVED BY: APATEL DATE: 2013/12/02 DATE: 2014/01/20 DATE: 2014/01/21	2:1	METRIC	
	TITLE: RECEPTACLE TO RAIL ASSY RECEPTACLE SIDE POWERMASS <b>molex</b>						SHEET NO. 1 OF 1
	MATERIAL NO. 75541-1004 DOCUMENT NO. SD-75541-104 THIS DRAWING CONTAINS INFORMATION THAT IS PROPRIETARY TO MOLEX INCORPORATED AND SHOULD NOT BE USED WITHOUT WRITTEN PERMISSION						